

FROM THE FOUNDER OF THE #VIKISEWS BRAND

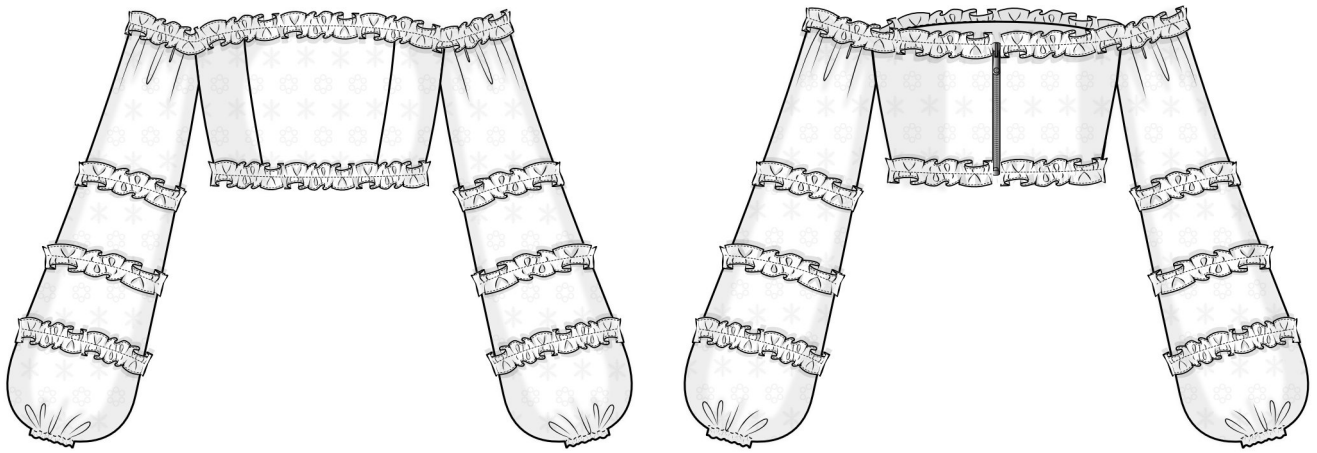


Back in 2016, when I was working on my first set of sewing instructions, I was trying to write them in such a way that even a complete beginner could easily understand and use them to create their very first garment. These instructions laid the foundation for the Vikisews brand, its vision and its mission. I wanted to create modern patterns with the utmost detailed and clear instructions.

Now, with each new collection we are constantly improving our instructions, amending them and adding more relevant details. By the time the final product reaches you, our drafters, correctors, and editors would have spent weeks perfecting every word and every photograph. If you compile a few of our instructions together, you will get a sewing manual that will assist you in sewing all kinds of garments at any difficulty level.

And I would be very happy if these instructions helped you to turn your hobby into a lifelong passion... Enjoy the process! Create your ultimate dream wardrobe! Wear your garments proudly for years to come!

If you have any questions, please contact us at info@vikisews.com — we are always there to help.



TENEA PATTERN DESCRIPTION

Tenea is a close-fitting blouse with open shoulders. The fit is achieved with princess seams. Double-edge ruffles are stitched along the top and bottom edges of the blouse. They are also added as a decoration to the long voluminous sleeves featuring elasticated casings at the top and bottom. The blouse closes with a separating zipper in the center back seam. The front and back of the blouse are fully lined. Tenea is above-waist length.



IMPORTANT!

The contents of this pattern are copyright protected and belong exclusively to Vikisews. You may use Vikisews patterns for personal use. It is prohibited to share Vikisews patterns and instructions with third parties, as well as to publish patterns and instructions online for public access. **Non-compliance with the mentioned rules is a violation of the US copyright law and may result in civil liability and criminal prosecution.**

You may use Vikisews patterns for commercial use, to sew custom-made garments and/or create fashion collections, on the condition that the patterns are solely used in a manufacturing setting and are not further shared with individuals.

TOTAL EASE ALLOWANCE

	Bust ease	Upper arm ease
cm	1.4–2.7	16.9–22.5
inches	1/2–1 1/8	6 5/8–8 7/8

SLEEVE LENGTH

Height, cm	Sleeve length (estimated), cm	Height, ft	Sleeve length (estimated), in
1 (154–160)	56.3–59	1 (5'1"–5'3")	22 1/8–23 1/4
2 (162–168)	58.1–60.7	2 (5'4"–5'6")	22 7/8–23 7/8
3 (170–176)	60–62.6	3 (5'7"–5'9")	23 5/8–24 5/8
4 (178–184)	61.8–64.4	4 (5'10"–6'1")	24 3/8–25 3/8

SUGGESTED FABRIC

To sew this blouse, choose dress-weight fabrics with the following properties: medium weight, soft, non-stretch. The fiber content can include natural fibers, artificial fibers, blends, or synthetics.

The following fabrics are recommended: denim, linen, gauze, poplin, sateen, cotton, eyelet fabric.

For the lining, we recommend sateen, poplin, batiste.

Attention! We do not recommend stretchy knit fabrics and lightweight sheer fabrics (chiffon, organza, stretch lace).

The blouse in the photo is made of eyelet fabric. The fabric is medium weight, soft, structured, and non-stretch. The fiber content is natural: 100% cotton. The fabric weight is 100 g/m².

The lining is made of batiste. The fiber content is natural: 100% cotton. The fabric weight is 72 g/m².

FABRIC AND NOTIONS REQUIREMENTS

1. Main fabric, 130 cm wide, with a directional print/nap, in meters:

Height, cm	Size					
	34-36	38-42	44	46-48	50	52
1 (154-160)	1.2	1.45	1.5	1.5	1.75	1.75
2 (162-168)	1.2	1.5	1.5	1.55	1.75	1.8
3 (170-176)	1.2	1.5	1.55	1.55	1.75	1.85
4 (178-184)	1.25	1.55	1.55	1.6	1.8	1.85

Main fabric, 51" wide, with a directional print/nap, in yards:

Height, ft	Size					
	34-36	38-42	44	46-48	50	52
1 (5'1"-5'3")	1 1/4	1 5/8	1 5/8	1 5/8	1 7/8	1 7/8
2 (5'4"-5'6")	1 1/4	1 5/8	1 5/8	1 3/4	1 7/8	2
3 (5'7"-5'9")	1 1/4	1 5/8	1 3/4	1 3/4	1 7/8	2
4 (5'10"-6'1")	1 3/8	1 3/4	1 3/4	1 3/4	2	2

2. Lining fabric, 140 cm wide, with a directional print, in meters:

Height, cm	Size			
	34-40	42	44	46-52
1 (154-160)	0.3	0.3	0.3	0.35
2 (162-168)	0.3	0.3	0.35	0.35
3 (170-176)	0.3	0.3	0.35	0.35
4 (178-184)	0.3	0.35	0.35	0.35

Lining fabric, 55" wide, with a directional print, in yards:

Height, ft	Size			
	34-40	42	44	46-52
1 (5'1"-5'3")	3/8	3/8	3/8	1/2
2 (5'4"-5'6")	3/8	3/8	1/2	1/2
3 (5'7"-5'9")	3/8	3/8	1/2	1/2
4 (5'10"-6'1")	3/8	1/2	1/2	1/2

3. Elastic, 7 mm (1/4") wide, for all heights:

Size	34	36-38	40-42	44-48	50-52
cm	70	75	80	85	90
inches	27 1/2	29 1/2	31 1/2	33 1/2	35 3/8

IMPORTANT! When purchasing fabric, please account for shrinkage and buy 5% more than required.

4. One separating zipper No. 3, 25 cm (9 7/8") long, for all sizes in all heights.

5. Two metal top zipper stoppers for the separating zipper.

6. Matching thread — 5 spools (2 spools for the sewing machine + 3 spools for the overlocker).

TOOLS AND EQUIPMENT

- sewing machine for construction
- one-sided zipper foot for the sewing machine
- overlocker for finishing raw edges. This may be replaced with a stretch overlock stitch or a zigzag stitch on the sewing machine (overlock or zigzag stitch width 2–3 mm, stitch length 2.5 mm)
- pliers for installing top zipper stoppers
- elastic threader or safety pin

PATTERN PIECES LIST

1. From main fabric:

- center front — cut 1 on fold
- side front — cut 2
- back — cut 2
- sleeve — cut 2
- sleeve top edge ruffle — cut 2
- sleeve top ruffle — cut 2
- sleeve mid ruffle — cut 2
- sleeve bottom ruffle — cut 2
- front top edge ruffle — cut 1 on fold
- front bottom edge ruffle — cut 1 on fold
- back top edge ruffle — cut 2
- back bottom edge ruffle — cut 2

2. From lining fabric:

- center front lining — cut 1 on fold
- side front lining — cut 2
- back lining — cut 2
- sleeve top edge casing — cut 2

IMPORTANT! Don't forget to transfer all pattern markings and notches onto the fabric.

SEAM ALLOWANCES

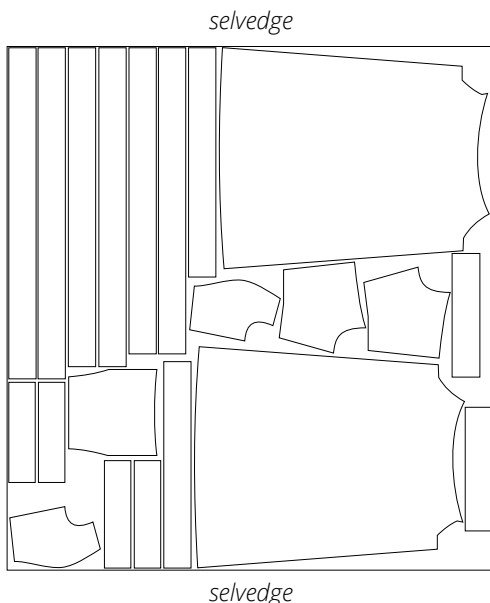
All pattern pieces include the seam allowances as follows:

- long edges of all ruffle pieces — 1.5 cm (5/8")
- all other edges — 1 cm (3/8").

Take this into account when laying out pattern pieces on the fabric.

CUTTING LAYOUT

Main fabric, 130 cm (51") wide, with a directional print/nap, cut on a single layer, for sizes 34–36 in all heights

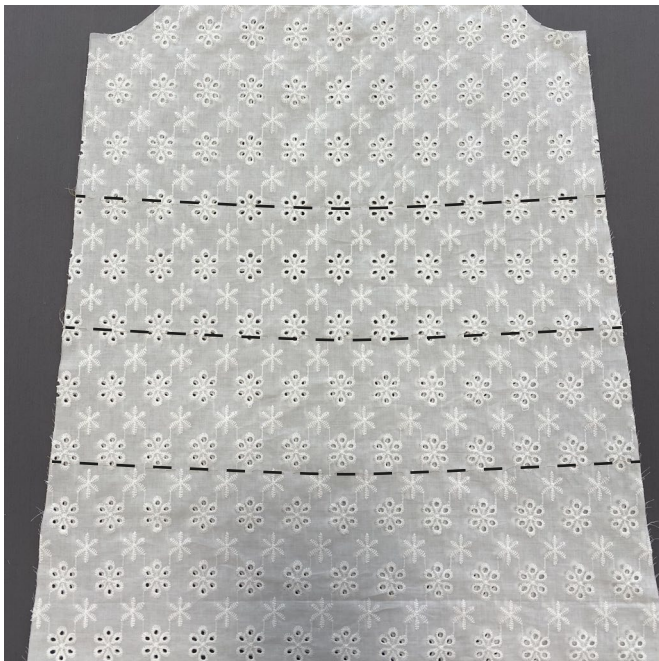


Main fabric, 130 cm (51") wide, with a directional print/nap, cut on a single layer, for sizes 38–48 in all heights





Pull on both bobbin threads at the same time and gather the ruffles to the length specified on the pattern. Distribute the gathering evenly. Tie the thread ends into knots on both sides of each piece.



Place the sleeve pieces right sides together, align the edges, match the notches. Thread-trace the placement of the ruffles on both pieces following the pattern markings. Don't pull the thread tight. The basting stitches should be loose, with 1–1.5 cm (3/8–5/8") high loops.



Carefully pull the sleeve pieces away from each other and cut the basting stitches in the middle.