

# FROM THE FOUNDER OF THE #VIKISEWS BRAND

---

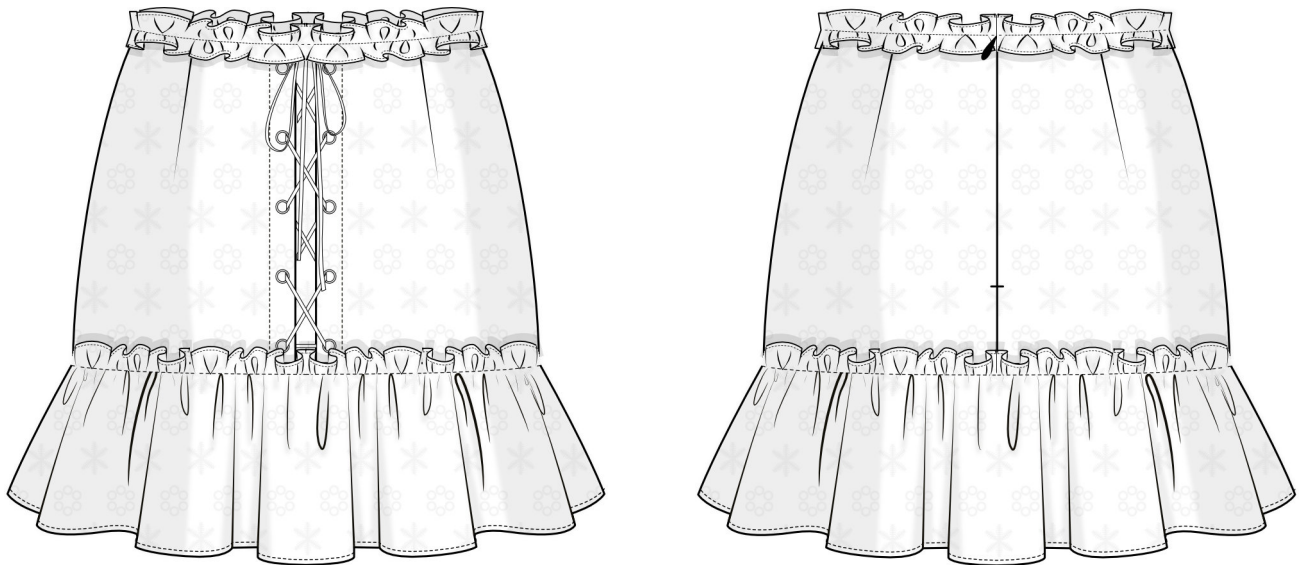


Back in 2016, when I was working on my first set of sewing instructions, I was trying to write them in such a way that even a complete beginner could easily understand and use them to create their very first garment. These instructions laid the foundation for the Vikisews brand, its vision and its mission. I wanted to create modern patterns with the utmost detailed and clear instructions.

Now, with each new collection we are constantly improving our instructions, amending them and adding more relevant details. By the time the final product reaches you, our drafters, correctors, and editors would have spent weeks perfecting every word and every photograph. If you compile a few of our instructions together, you will get a sewing manual that will assist you in sewing all kinds of garments at any difficulty level.

And I would be very happy if these instructions helped you to turn your hobby into a lifelong passion... Enjoy the process! Create your ultimate dream wardrobe! Wear your garments proudly for years to come!

If you have any questions, please contact us at [info@vikisews.com](mailto:info@vikisews.com) — we are always there to help.



## MILJANA PATTERN DESCRIPTION

---

Miljana is a semi-fitted, fully lined skirt with a straight silhouette. The skirt features waist darts both on the front and back. There is a decorative grommet lace-up detail at the center front. The top edge of the skirt features a narrow double-edge ruffle, while the bottom edge is finished with a wide heading ruffle. The skirt closes with an invisible zipper in the center back seam. Miljana is above-knee length.



## IMPORTANT!

---

The contents of this pattern are copyright protected and belong exclusively to Vikisews. You may use Vikisews patterns for personal use. It is prohibited to share Vikisews patterns and instructions with third parties, as well as to publish patterns and instructions online for public access. **Non-compliance with the mentioned rules is a violation of the US copyright law and may result in civil liability and criminal prosecution.**

You may use Vikisews patterns for commercial use, to sew custom-made garments and/or create fashion collections, on the condition that the patterns are solely used in a manufacturing setting and are not further shared with individuals.

## TOTAL EASE ALLOWANCE

	Waistline ease	Hipline ease
cm	3.9–5.1	4.3–5.4
inches	1 1/2–2	1 3/4–2 1/8

## GARMENT LENGTH

Height, cm	Garment length, cm	Height, ft	Garment length, in
1 (154–160)	37.2–39.5	1 (5'1"–5'3")	14 5/8–15 1/2
2 (162–168)	40.2–42.5	2 (5'4"–5'6")	15 7/8–16 3/4
3 (170–176)	43.2–45.5	3 (5'7"–5'9")	17–17 7/8
4 (178–184)	46.2–48.5	4 (5'10"–6'1")	18 1/4–19 1/8

## SUGGESTED FABRIC

To sew this skirt, choose dress-weight fabrics with the following properties: medium weight, soft, non-stretch. The fiber content can include natural fibers, artificial fibers, blends, or synthetics.

The following fabrics are recommended: denim, linen, gauze, poplin, sateen, cotton, eyelet fabric.

For the lining, we recommend sateen, poplin, batiste.

**Attention!** We do not recommend stretchy knit fabrics and lightweight sheer fabrics (chiffon, organza, stretch lace).

The skirt in the photo is made of eyelet fabric. The fabric is medium weight, soft, structured, and non-stretch. The fiber content is natural: 100% cotton. The fabric weight is 100 g/m<sup>2</sup>.

The lining is made of batiste. The fiber content is natural: 100% cotton. The fabric weight is 72 g/m<sup>2</sup>.

# FABRIC AND NOTIONS REQUIREMENTS

1. Main fabric, 130 cm wide, with a directional print/nap, in meters:

Height, cm	Size						
	34	36-40	42	44	46	48	50-52
1 (154-160)	0.75	0.75	0.8	0.8	0.8	0.85	1
2 (162-168)	0.8	0.8	0.8	0.8	0.9	0.9	1.05
3 (170-176)	0.8	0.85	0.9	0.9	0.9	0.9	1.1
4 (178-184)	0.85	0.85	0.9	0.95	0.95	0.95	1.15

Main fabric, 51" wide, with a directional print/nap, in yards:

Height, ft	Size			
	34-40	42-44	46-48	50-52
1 (5'1"-5'3")	7/8	7/8	7/8	1 1/8
2 (5'4"-5'6")	7/8	7/8	1	1 1/8
3 (5'7"-5'9")	7/8	1	1	1 1/4
4 (5'10"-6'1")	7/8	1	1	1 1/4

2. Lining fabric, 140 cm wide, with a directional print, in meters:

Height, cm	Size			
	34-38	40-46	48	50-52
1 (154-160)	0.35	0.4	0.4	0.65
2 (162-168)	0.4	0.4	0.4	0.7
3 (170-176)	0.45	0.45	0.45	0.75
4 (178-184)	0.45	0.45	0.5	0.8

Lining fabric, 55" wide, with a directional print, in yards:

Height, ft	Size	
	34-48	50-52
1 (5'1"-5'3")	3/8	3/4
2 (5'4"-5'6")	3/8	3/4
3 (5'7"-5'9")	1/2	7/8
4 (5'10"-6'1")	1/2	7/8

3. Interfacing, 140 cm wide, in meters:

Height, cm	Size		
	34–38	40–46	48–52
1 (154–160)	0.25	0.25	0.3
2 (162–168)	0.3	0.3	0.3
3 (170–176)	0.3	0.35	0.35
4 (178–184)	0.35	0.35	0.35

Interfacing, 55" wide, in yards:

Height, ft	Size	
	34–46	48–52
1 (5'1"–5'3")	1/4	3/8
2 (5'4"–5'6")	3/8	3/8
3 (5'7"–5'9")	3/8	3/8
4 (5'10"–6'1")	3/8	3/8

**IMPORTANT!** When purchasing fabric, please account for shrinkage and buy 5% more than required.

4. One invisible zipper, 15 cm (5 7/8") long, for all sizes in all heights.

5. Decorative cord, for all sizes in all heights — 1.3 m (1 3/8 yd).

6. Ten grommets, 5 mm (1/4") in diameter.

7. Matching thread — 4 spools (1 spool for the sewing machine + 3 spools for the overlocker).

## TOOLS AND EQUIPMENT

- sewing machine for construction
- one-sided zipper foot for the sewing machine
- overlocker for finishing raw edges. This may be replaced with a stretch overlock stitch or a zigzag stitch on the sewing machine (overlock or zigzag stitch width 2–3 mm, stitch length 2.5 mm)
- grommet press tool with a set of molds, hole puncher

# PATTERN PIECES LIST

---

## 1. From main fabric:

- front — cut 2
- back — cut 2
- front bottom ruffle — cut 1 on fold
- back bottom ruffle — cut 1 on fold
- front top ruffle — cut 1 on fold
- back top ruffle — cut 2
- facing — cut 2
- front insert — cut 1.

## 2. From lining fabric:

- front lining — cut 1 on fold
- back lining — cut 2
- facing — cut 2.

**IMPORTANT!** Don't forget to transfer all pattern markings and notches onto the fabric.

## 3. From interfacing:

- facing — cut 2.

# SEAM ALLOWANCES

---

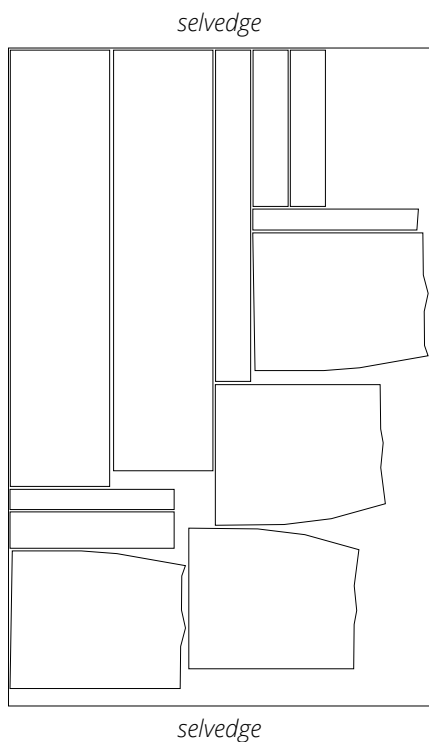
All pattern pieces include seam allowances as follows:

- long edges of the front and back top and bottom ruffles — 1.5 cm (5/8")
- all other edges — 1 cm (3/8").

Take this into account when laying out pattern pieces on the fabric.

# CUTTING LAYOUT

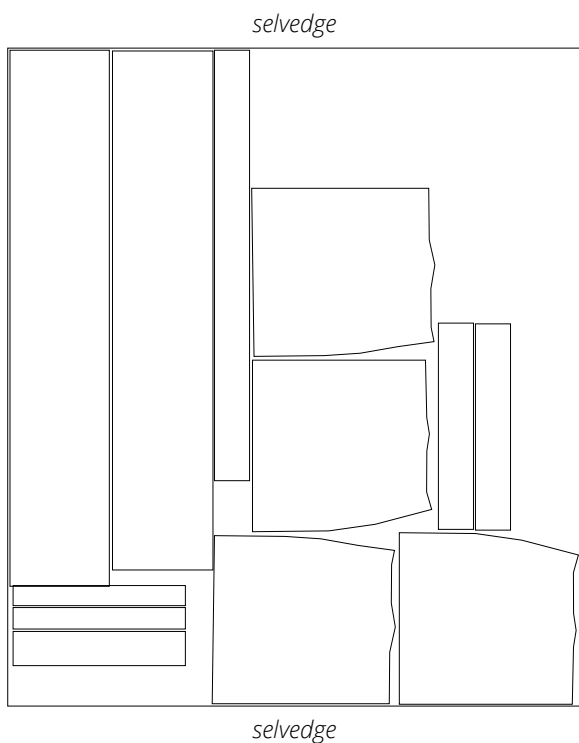
Main fabric, 130 cm (51") wide, with a directional print/nap, cut on a single layer, for sizes 34–40 in all heights



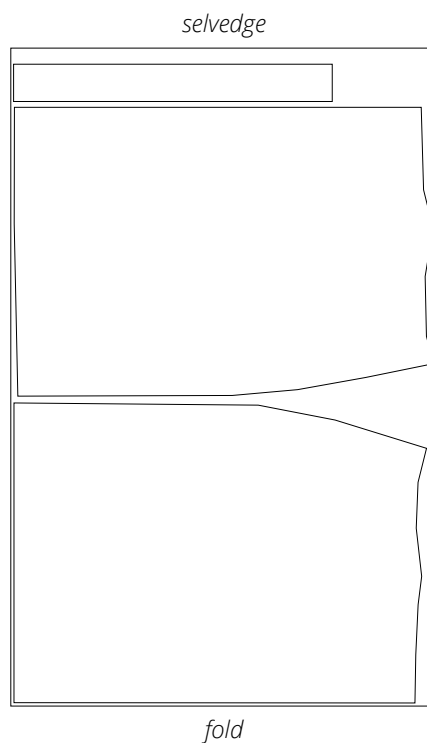
Main fabric, 130 cm (51") wide, with a directional print/nap, cut on a single layer, for sizes 42–48 in all heights

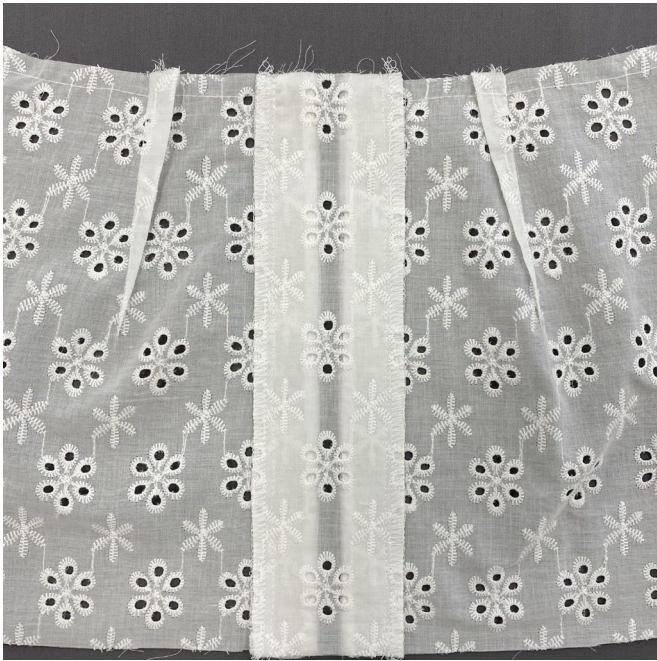


Main fabric, 130 cm (51") wide, with a directional print/nap, cut on a single layer, for sizes 50–52 in all heights



Lining fabric, 140 cm (55") wide, with a directional print, cut on fold, for sizes 34–48 in all heights





Finish the seam allowances on the overlocker, with the wrong side of the front insert facing up.

Press the seams.



Place the assembled front piece facing down, smooth out the front insert, align the top and bottom edges, and baste the front insert in place. Machine-stitch exactly over the seam joining the facing and the front insert. Backstitch at the beginning and end.

Press the seams.



Transfer the grommet placement from the pattern to the right side of the assembled front piece.