

# FROM THE FOUNDER OF THE #VIKISEWS BRAND

---

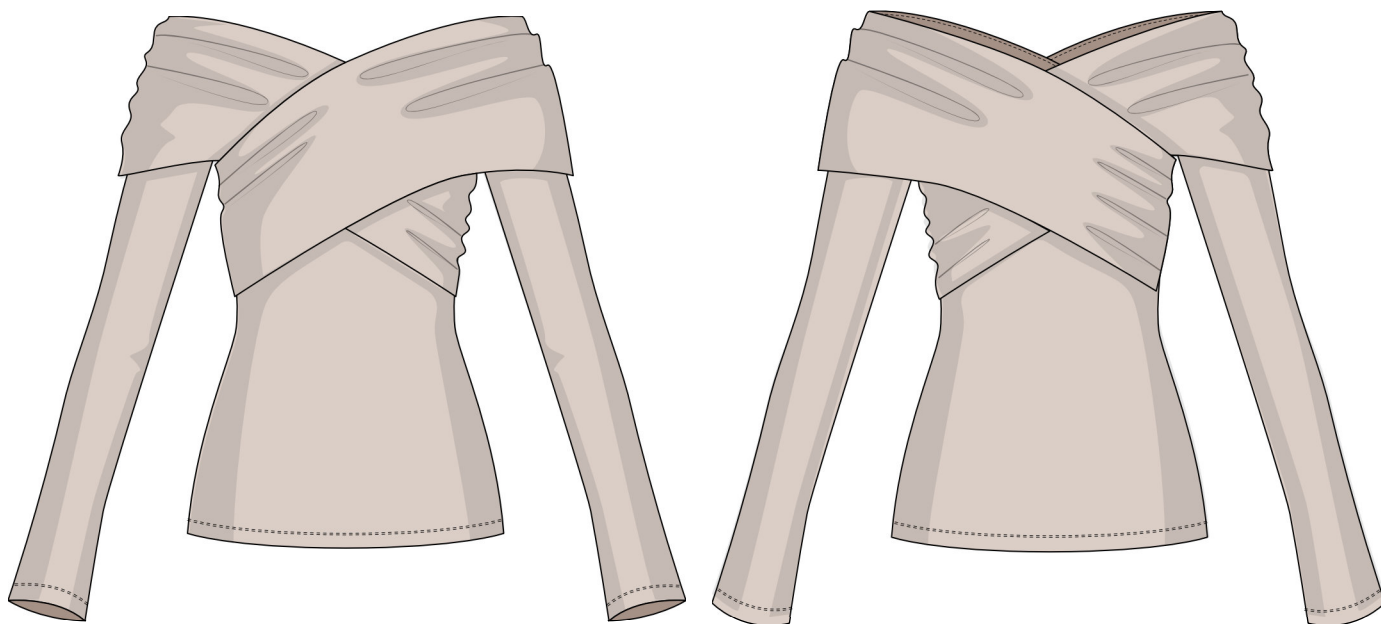


Back in 2016, when I was working on my first set of sewing instructions, I was trying to write them in such a way that even a complete beginner could easily understand and use them to create their very first garment. These instructions laid the foundation for the Vikisews brand, its vision and its mission. I wanted to create modern patterns with the utmost detailed and clear instructions.

Now, with each new collection we are constantly improving our instructions, amending them and adding more relevant details. By the time the final product reaches you, our drafters, correctors, and editors would have spent weeks perfecting every word and every photograph. If you compile a few of our instructions together, you will get a sewing manual that will assist you in sewing all kinds of garments at any difficulty level.

And I would be very happy if these instructions helped you to turn your hobby into a lifelong passion... Enjoy the process! Create your ultimate dream wardrobe! Wear your garments proudly for years to come!

If you have any questions, please contact us at [info@vikisews.com](mailto:info@vikisews.com) — we are always there to help.



## SIELLE PATTERN DESCRIPTION

---

Sielle is a long sleeve, close-fitting dress or top featuring open shoulders and a deep, open neckline finished with a wide, two-piece, turn-down collar. The sleeves are close-fitting. The dress is ankle-length. The long sleeve top is hip-length.



## IMPORTANT!

---

The contents of this pattern are copyright protected and belong exclusively to Vikisews. You may use Vikisews patterns for personal use. It is prohibited to share Vikisews patterns and instructions with third parties, as well as to publish patterns and instructions online for public access. **Non-compliance with the mentioned rules is a violation of the US copyright law and may result in civil liability and criminal prosecution.**

You may use Vikisews patterns for commercial use, to sew custom-made garments and/or create fashion collections, on the condition that the patterns are solely used in a manufacturing setting and are not further shared with individuals.

# TOTAL EASE ALLOWANCE

	Bust ease	Waistline ease	Hipline ease	Upper arm ease
cm	-5 – (-2.7)	-2.5	-2.7 – (-0.4)	1.2–8.4
inches	-2 – (-1 1/8)	-1	-1 1/8 – (-1/8)	1/2–3 1/4

# GARMENT LENGTH, SLEEVE LENGTH

Height, cm	Center back length (dress), cm	Center back length (long sleeve top), cm	Sleeve length, cm
1 (154–160)	122	49–54	61–62
2 (162–168)	125	50–55	63–64
3 (170–176)	129	51–56	64–65
4 (178–184)	133	52–57	66–67

Height, ft	Center back length (dress), in	Center back length (long sleeve top), in	Sleeve length, in
1 (5'1"–5'3")	48	19 1/4–21 1/4	24–24 3/8
2 (5'4"–5'6")	49 1/4	19 5/8–21 5/8	24 3/4–25 1/4
3 (5'7"–5'9")	50 3/4	20 1/8–22	25 1/4–25 5/8
4 (5'10"–6'1")	52 3/8	20 1/2–22 1/2	26–26 3/8

# SUGGESTED FABRIC

To sew this garment, choose soft, medium weight knit fabrics that are medium to high stretch. The fiber content can include natural fibers, artificial fibers, blends, and synthetics.

The following fabrics are recommended: sweater knits, knits, ribbed knits. The stretch factor should be at least 1.7.

**Attention!** We recommend using only stretchy fabrics for this garment.

You can determine the stretch factor of the fabric yourself. Mark 10 cm (4") along the crosswise grain of the fabric, lay a ruler next to the marked section, and stretch the fabric. Divide the measurement you get by 10.

The garment in the photo is made of knit fabric. The fabric is medium weight, soft, and medium stretch. The fiber content is a blend of viscose, polyester, and elastane. The fabric weight is 170 g/m².

The stretch factor is 1.7.

# FABRIC AND NOTIONS REQUIREMENTS

1. Main fabric, 150 cm wide, cut in one direction, in meters (dress version):

Height, cm	Size			
	34	36	38-42	44-52
1 (154-160)	2.85	2.9	2.9	2.95
2 (162-168)	2.9	2.95	2.95	3
3 (170-176)	2.95	3	3.1	3.1
4 (178-184)	3	3.1	3.1	3.1

Main fabric, 59" wide, cut in one direction, in yards (dress version):

Height, ft	Size			
	34	36	38-42	44-52
1 (5'1"-5'3")	3 1/8	3 1/8	3 1/8	3 1/4
2 (5'4"-5'6")	3 1/8	3 1/4	3 1/4	3 1/4
3 (5'7"-5'9")	3 1/4	3 1/4	3 3/8	3 3/8
4 (5'10"-6'1")	3 1/4	3 3/8	3 3/8	3 3/8

Main fabric, 150 cm wide, cut in one direction, in meters (long sleeve top version):

Height, cm	Size								
	34	36	38	40	42	44	46	48-50	52
1 (154-160)	1.6	1.8	2.1	2.15	2.2	2.2	2.25	2.25	2.25
2 (162-168)	1.65	1.8	2.1	2.2	2.25	2.25	2.25	2.3	2.3
3 (170-176)	1.65	1.85	2.15	2.25	2.25	2.3	2.3	2.3	2.35
4 (178-184)	1.7	1.85	2.2	2.25	2.3	2.3	2.3	2.35	2.35

Main fabric, 59" wide, cut in one direction, in yards (long sleeve top version):

Height, ft	Size							
	34	36	38	40	42-44	46	48-50	52
1 (5'1"-5'3")	1 3/4	2	2 1/4	2 3/8	2 3/8	2 1/2	2 1/2	2 1/2
2 (5'4"-5'6")	1 3/4	2	2 1/4	2 3/8	2 1/2	2 1/2	2 1/2	2 1/2
3 (5'7"-5'9")	1 3/4	2	2 3/8	2 1/2	2 1/2	2 1/2	2 1/2	2 5/8
4 (5'10"-6'1")	1 3/4	2	2 3/8	2 1/2	2 1/2	2 1/2	2 5/8	2 5/8

**IMPORTANT!** When purchasing fabric, please account for shrinkage and buy 5% more than required.

2. Clear elastic, 1 cm wide, in centimeters:

Height, cm	Size									
	34	36	38	40	42	44	46	48	50	52
1 (154–160)	82	83.5	85	86	87.5	89	91	92	94	96
2 (162–168)	85	86	87	88	89.5	91	92.5	94	96	98
3 (170–176)	86	87.5	88.5	90	91	93	94	96	97.5	99.5
4 (178–184)	88	89	90	91	93	94.5	96	97	99	101

Clear elastic, 3/8" wide, in inches:

Height, ft	Size									
	34	36	38	40	42	44	46	48	50	52
1 (5'1"–5'3")	32 1/4	32 7/8	33 1/2	33 7/8	34 1/2	35	35 7/8	36 1/4	37	37 3/4
2 (5'4"–5'6")	33 1/2	33 7/8	34 1/4	34 5/8	35 1/4	35 7/8	36 3/8	37	37 3/4	38 5/8
3 (5'7"–5'9")	33 7/8	34 1/2	34 7/8	35 3/8	35 7/8	36 5/8	37	37 3/4	38 3/8	39 1/8
4 (5'10"–6'1")	34 5/8	35	35 3/8	35 7/8	36 5/8	37 1/4	37 3/4	38 1/4	39	39 3/4

3. Matching thread — 5 spools (1 spool for the sewing machine + 4 spools for the overlocker / 3 spools for the coverstitch machine).

## TOOLS AND EQUIPMENT

- sewing machine for construction
- overlocker for construction and finishing raw edges. This may be replaced with a stretch overlock stitch or a zigzag stitch on the sewing machine (overlock or zigzag stitch width 2–3 mm, stitch length 2.5 mm)
- coverstitch or coverlock machine for finishing the bottom edges of the garment and sleeves. If you don't have a coverstitch machine, it can be replaced with a twin needle on any regular sewing machine that can do a zigzag stitch

**IMPORTANT!** We recommend using specialty needles when working with knit fabrics (for example, *STRETCH*, *SUPER STRETCH*, *JERSEY*, etc.). When sewing, a ball-shaped needle point pushes the knit loops apart without piercing the threads.

# PATTERN PIECES LIST

From main fabric:

- front — cut 1 on fold
- back — cut 1 on fold
- sleeve — cut 2
- collar — cut 2.

***IMPORTANT!** Don't forget to transfer all pattern markings and notches onto the fabric.*

## SEAM ALLOWANCES

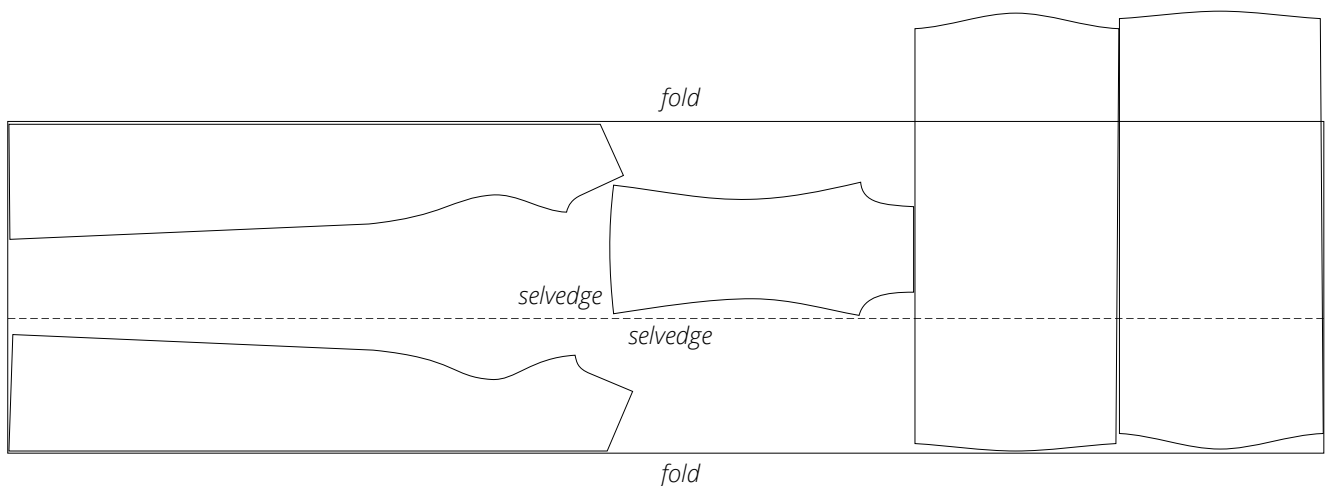
All pattern pieces include seam allowances as follows:

- garment hem allowance at the front — 2 cm (3/4")
- garment hem allowance at the back — 2 cm (3/4")
- sleeve hem allowance — 2 cm (3/4")
- all other edges — 1 cm (3/8").

Take this into account when laying out pattern pieces on the fabric.

## CUTTING LAYOUT (DRESS VERSION)

Main fabric, 150 cm (59") wide, with a directional print/nap, cut with two folds, for sizes 34–36 in all heights



**Attention!** The collar pieces are cut on a single layer out of leftover fabric.



Fold the sleeve piece right side in. Align the long edges, match the notches, and pin.



Place the two collar pieces right sides together. Align the short edges, match the notches, and pin.



Stitch the following on the overlocker:

- garment side seams, keeping the front piece facing up
- sleeve seams, keeping the front part of each sleeve facing up
- short collar seams.

Use a 4-thread overlocker for this step, as well as for the following similar steps. You can replace the overlocker with a stretch or zigzag stitch on your sewing machine.