

FROM THE FOUNDER OF THE #VIKISEWS BRAND

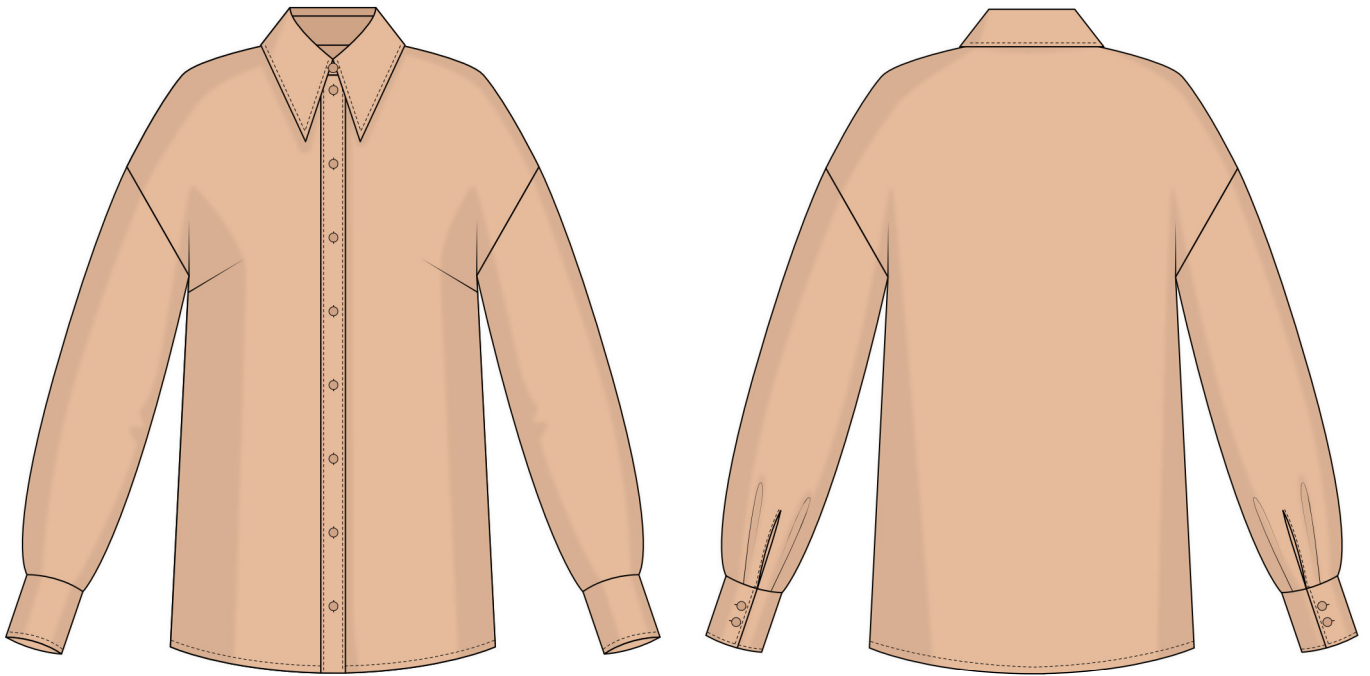


Back in 2016, when I was working on my first set of sewing instructions, I was trying to write them in such a way that even a complete beginner could easily understand and use them to create their very first garment. These instructions laid the foundation for the Vikisews brand, its vision and its mission. I wanted to create modern patterns with the utmost detailed and clear instructions.

Now, with each new collection we are constantly improving our instructions, amending them and adding more relevant details. By the time the final product reaches you, our drafters, correctors, and editors would have spent weeks perfecting every word and every photograph. If you compile a few of our instructions together, you will get a sewing manual that will assist you in sewing all kinds of garments at any difficulty level.

And I would be very happy if these instructions helped you to turn your hobby into a lifelong passion... Enjoy the process! Create your ultimate dream wardrobe! Wear your garments proudly for years to come!

If you have any questions, please contact us at info@vikisews.com — we are always there to help.



YARA PATTERN DESCRIPTION

Yara is a semi-fitted blouse with a straight cut. The front is shaped with bust darts. The blouse features a turn-down shirt collar with a separate collar stand and long, set-in, drop-shoulder shirt sleeves. At the bottom, each sleeve has pleats and a slit finished with sleeve placket binding. Applied cuffs close with buttons and buttonholes. The blouse has a grown-on center front placket with a button and buttonhole closure. Yara is below-hip length.



IMPORTANT!

The contents of this pattern are copyright protected and belong exclusively to Vikisews. You may use Vikisews patterns for personal use. It is prohibited to share Vikisews patterns and instructions with third parties, as well as to publish patterns and instructions online for public access. **Non-compliance with the mentioned rules is a violation of the US copyright law and may result in civil liability and criminal prosecution.**

You may use Vikisews patterns for commercial use, to sew custom-made garments and/or create fashion collections, on the condition that the patterns are solely used in a manufacturing setting and are not further shared with individuals.

TOTAL EASE ALLOWANCE

	Bust ease	Waistline ease	Hipline ease	Upper arm ease
cm	22–26.5	37.9–41.7	15.9–19.6	7–9.3
inches	8 5/8–10 3/8	14 7/8–16 3/8	6 1/4–7 3/4	2 3/4–3 5/8

GARMENT LENGTH, SLEEVE LENGTH

Height, cm	Back length, cm	Sleeve length including shoulder and cuff width, cm
1 (154–160)	66–67.5	73.6–77.9
2 (162–168)	69–70.5	75.5–79.9
3 (170–176)	72–73.5	77.6–81.9
4 (178–184)	75–76.5	79.6–83.8
Height, ft	Back length, in	Sleeve length including shoulder and cuff width, in
1 (5'1"–5'3")	26–26 5/8	29–30 5/8
2 (5'4"–5'6")	27 1/8–27 3/4	29 3/4–31 1/2
3 (5'7"–5'9")	28 3/8–28 7/8	30 1/2–32 1/4
4 (5'10"–6'1")	29 1/2–30 1/8	31 3/8–33

SUGGESTED FABRIC

To sew this blouse, choose medium-weight, pliable, non-stretch or low-stretch, opaque or semi-sheer dress-weight fabrics made of natural, artificial, synthetic fibers, or blends.

The following fabrics are recommended: batiste, organza, sateen, cotton, natural or artificial silk.

The blouse in the photo is made of organza. The fabric is medium weight, pliable, non-stretch, and semi-sheer. The fiber content is 100% polyester. The fabric weight is 45 g/m².

FABRIC AND NOTIONS REQUIREMENTS

1. Main fabric, 140 cm wide, with a directional print/nap, in meters:

Height, cm	Size								
	34	36	38	40–42	44	46	48	50	52
1 (154–160)	1.4	1.45	1.45	1.45	1.6	1.65	1.7	1.7	1.75
2 (162–168)	1.45	1.45	1.45	1.5	1.65	1.7	1.75	1.75	1.8
3 (170–176)	1.45	1.5	1.5	1.5	1.75	1.75	1.75	1.8	1.8
4 (178–184)	1.5	1.5	1.55	1.55	1.8	1.8	1.8	1.85	1.85

Main fabric, 55" wide, with a directional print/nap, in yards:

Height, ft	Size							
	34	36	38–42	44	46	48	50	52
1 (5'1"–5'3")	1 1/2	1 5/8	1 5/8	1 3/4	1 3/4	1 7/8	1 7/8	1 7/8
2 (5'4"–5'6")	1 5/8	1 5/8	1 5/8	1 3/4	1 7/8	1 7/8	1 7/8	2
3 (5'7"–5'9")	1 5/8	1 5/8	1 5/8	1 7/8	1 7/8	1 7/8	2	2
4 (5'10"–6'1")	1 5/8	1 5/8	1 3/4	2	2	2	2	2

IMPORTANT! When purchasing fabric, please account for shrinkage and buy 5% more than required.

2. Thirteen button blanks (plus one or two spare ones), 1.1 cm (3/8") in diameter.
3. Fusible web tape, 2 cm (3/4") wide, for all sizes in all heights — 30 cm (11 3/4").
4. Matching thread — 1 spool.

TOOLS AND EQUIPMENT

- sewing machine for construction
- buttonhole foot for the sewing machine
- press tool and molds for button covering.

PATTERN PIECES LIST

From main fabric:

- front — cut 2
- back — cut 1 on fold
- sleeve — cut 2
- undercollar — cut 1 on fold
- upper collar — cut 1 on fold
- collar stand — cut 3
- cuff — cut 2
- sleeve placket binding — cut 2.

Additionally, cut thirteen circles out of the main fabric. Each circle should be 8 mm (just under 3/8") larger in diameter than the button blank.

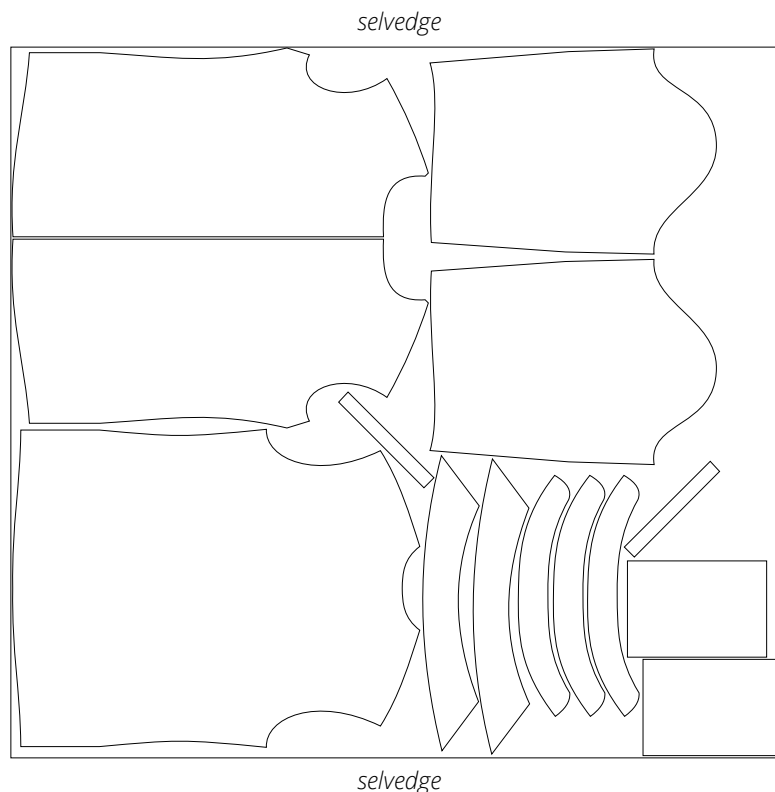
SEAM ALLOWANCES

All pattern pieces include 1 cm (3/8") seam allowances.

Take this into account when laying out pattern pieces on the fabric.

CUTTING LAYOUT

Main fabric, 140 cm (55") wide, with a directional print/nap, cut on a single layer, for sizes 34–42 in all heights





Trim the dart seam allowances down to 3 mm (1/8").



Press the seam allowances open.



Fold the front piece at the dart seam, facing inwards, and press, ensuring the seam is on the very edge.