

# FROM THE FOUNDER OF THE #VIKISEWS BRAND

---



Back in 2016, when I was working on my first set of sewing instructions, I was trying to write them in such a way that even a complete beginner could easily understand and use them to create their very first garment. These instructions laid the foundation for the Vikisews brand, its vision and its mission. I wanted to create modern patterns with the utmost detailed and clear instructions.

Now, with each new collection we are constantly improving our instructions, amending them and adding more relevant details. By the time the final product reaches you, our drafters, correctors, and editors would have spent weeks perfecting every word and every photograph. If you compile a few of our instructions together, you will get a sewing manual that will assist you in sewing all kinds of garments at any difficulty level.

And I would be very happy if these instructions helped you to turn your hobby into a lifelong passion... Enjoy the process! Create your ultimate dream wardrobe! Wear your garments proudly for years to come!

If you have any questions, please contact us at [info@vikisews.com](mailto:info@vikisews.com) — we are always there to help.



## VERONA PATTERN DESCRIPTION

---

Verona is a loose-fitting coat with a straight cut and no closure. It features a grown-on hood and front patch pockets. The front bust darts are transferred to the neckline. The coat has drop-shoulder, shirt-style, one-piece sleeves. It is unlined and is designed for double-faced fabrics. The removable tie belt is secured with belt loops at the side seams. Verona is mid-hip length.



## IMPORTANT!

---

The contents of this pattern are copyright protected and belong exclusively to Vikisews. You may use Vikisews patterns for personal use. It is prohibited to share Vikisews patterns and instructions with third parties, as well as to publish patterns and instructions online for public access. **Non-compliance with the mentioned rules is a violation of the US copyright law and may result in civil liability and criminal prosecution.**

You may use Vikisews patterns for commercial use, to sew custom-made garments and/or create fashion collections, on the condition that the patterns are solely used in a manufacturing setting and are not further shared with individuals.

## TOTAL EASE ALLOWANCE

	Bust ease	Waistline ease	Hipline ease	Upper arm ease
cm	45.9–49.9	61.6–65.6	35.9–39.9	15.6–17
inches	18 1/8–19 5/8	24 1/4–25 7/8	14 1/8–15 3/4	6 1/8–6 3/4

## GARMENT LENGTH, SLEEVE LENGTH

Height, cm	Back length, cm	Sleeve length including shoulder width, cm
1 (154–160)	73.5–75	71–74.5
2 (162–168)	76.5–78.8	73–77
3 (170–176)	79.5–81	75–78.5
4 (178–184)	82.5–84	77–80

Height, ft	Back length, in	Sleeve length including shoulder width, in
1 (5'1"–5'3")	28 7/8–29 1/2	28–29 3/8
2 (5'4"–5'6")	30 1/8–31	28 3/4–30 3/8
3 (5'7"–5'9")	31 1/4–31 7/8	29 1/2–30 7/8
4 (5'10"–6'1")	32 1/2–33 1/8	30 3/8–31 1/2

## SUGGESTED FABRIC

The coat is designed for double-faced fabrics only. Choose medium-weight, soft, non-stretch coating fabrics made from natural fibers or blends.

Recommended fabrics: double-faced wool coating, boiled wool, melton wool, cashmere.

The coat in the photos is made of double-faced wool coating. The fabric is medium weight, soft, without stretch. The fiber content is 100% wool. The fabric weight is 450 g/m<sup>2</sup>.

# FABRIC AND NOTIONS REQUIREMENTS

1. Main fabric, 150 cm wide, with a directional print/nap, in meters:

Height, cm	Size				
	XS	S	M	L	XL
1 (154–160)	2.1	2.1	2.2	2.5	2.6
2 (162–168)	2.15	2.2	2.3	2.6	2.7
3 (170–176)	2.2	2.3	2.3	2.7	2.8
4 (178–184)	2.3	2.4	2.4	2.8	2.9

Main fabric, 59" wide, with a directional print/nap, in yards:

Height, ft	Size				
	XS	S	M	L	XL
1 (5'1"–5'3")	2 1/4	2 1/4	2 3/8	2 3/4	2 7/8
2 (5'4"–5'6")	2 3/8	2 3/8	2 1/2	2 7/8	3
3 (5'7"–5'9")	2 3/8	2 1/2	2 1/2	3	3
4 (5'10"–6'1")	2 1/2	2 5/8	2 5/8	3	3 1/8

**IMPORTANT!** When purchasing fabric, please account for shrinkage and buy 5% more than required.

2. Lightweight interfacing, knit or woven, 140 cm (55") wide, for all sizes and heights – 1.3 m (1 3/8 yd).
3. Stitched bias-cut fusible stay tape with stitch reinforcement, 1.5 cm (5/8") wide, for all sizes and heights – 6.6 m (7 1/4 yd).
4. Matching thread – 1 spool.

## TOOLS AND EQUIPMENT

- sewing machine for construction

# PATTERN PIECES LIST

---

## 1. From main fabric:

- front – cut 2
- back – cut 1 on fold
- sleeve – cut 2
- patch pocket – cut 2
- belt loop – cut 1 (makes 2 pieces)
- belt – cut 2.

## 2. From interfacing:

- belt – cut 2.

**IMPORTANT!** Don't forget to transfer all pattern markings and notches onto the fabric.

# SEAM ALLOWANCES

---

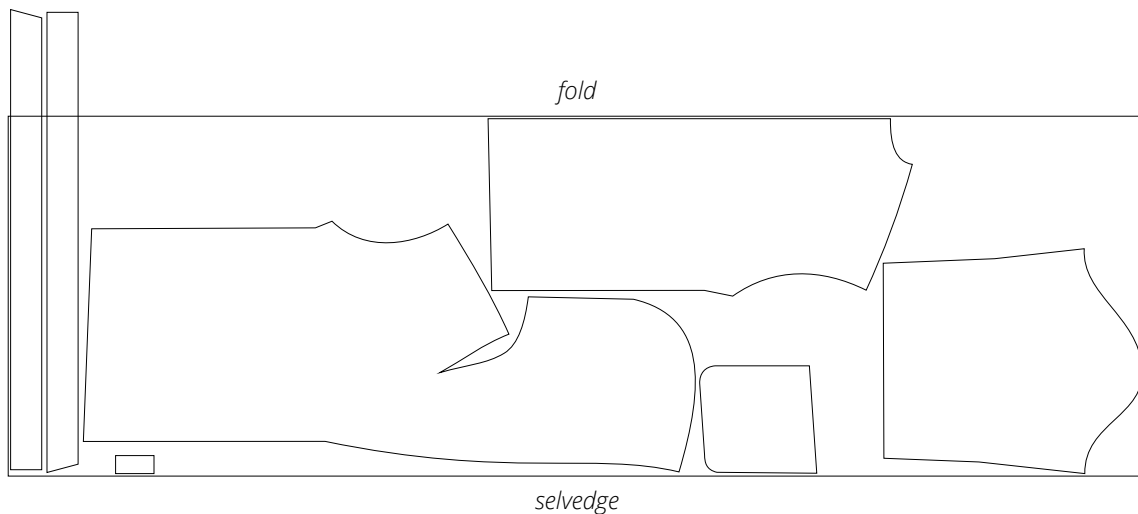
All pattern pieces include 1 cm (3/8") seam allowances.

Take this into account when laying out pattern pieces on the fabric.

# CUTTING LAYOUT

---

Main fabric, 150 cm (59") wide, with a directional print/nap, cut on fold, for sizes XS-M in all heights



**Attention!** Cut only one belt loop piece. The belt pieces are cut on a single layer out of leftover fabric.

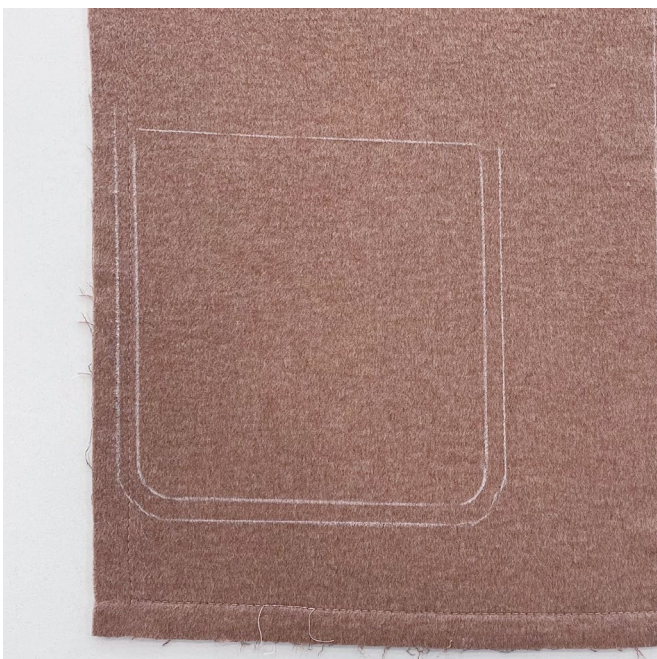




Press the other top seam allowance the same way.



Transfer the pocket placement from the pattern to the right side of the front piece using chalk.



Add 1 cm (3/8") seam allowances to the marked lines along the side and bottom edges.