

FROM THE FOUNDER OF THE #VIKISEWS BRAND

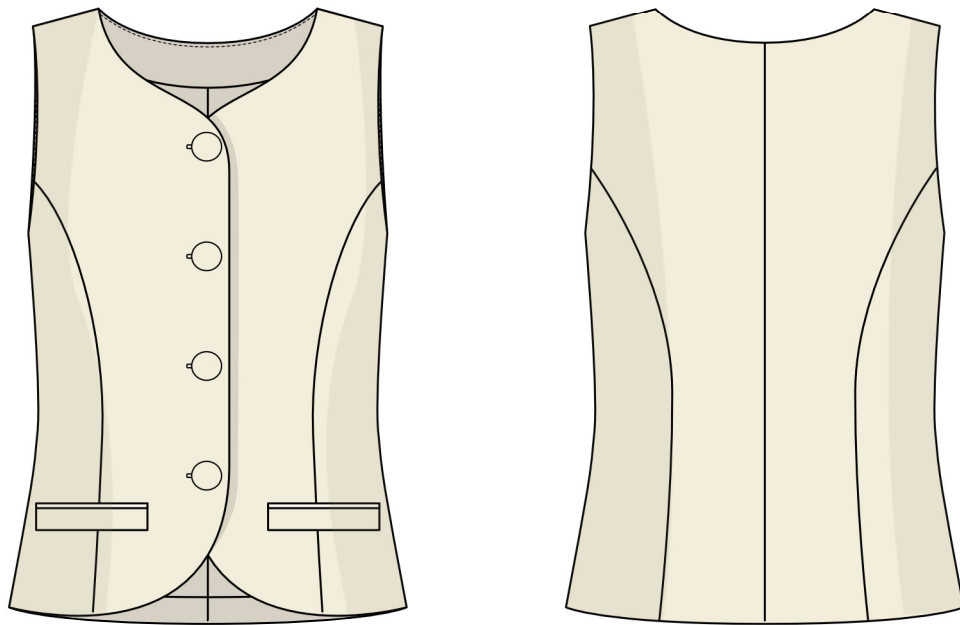


Back in 2016, when I was working on my first set of sewing instructions, I was trying to write them in such a way that even a complete beginner could easily understand and use them to create their very first garment. These instructions laid the foundation for the Vikisews brand, its vision and its mission. I wanted to create modern patterns with the utmost detailed and clear instructions.

Now, with each new collection we are constantly improving our instructions, amending them and adding more relevant details. By the time the final product reaches you, our drafters, correctors, and editors would have spent weeks perfecting every word and every photograph. If you compile a few of our instructions together, you will get a sewing manual that will assist you in sewing all kinds of garments at any difficulty level.

And I would be very happy if these instructions helped you to turn your hobby into a lifelong passion... Enjoy the process! Create your ultimate dream wardrobe! Wear your garments proudly for years to come!

If you have any questions, please contact us at info@vikisews.com — we are always there to help.



HEDWIG PATTERN DESCRIPTION

Hedwig is a semi-fitted fully lined vest. The front features princess seams, faux welt pockets, and rounded center front edges. At the back, the vest is shaped with princess seams and a center seam. The vest has a shaped neckline and fastens with fabric-covered buttons and buttonholes at the center front. Hedwig is above-hip length.



IMPORTANT!

The contents of this pattern are copyright protected and belong exclusively to Vikisews. You may use Vikisews patterns for personal use. It is prohibited to share Vikisews patterns and instructions with third parties, as well as to publish patterns and instructions online for public access. **Non-compliance with the mentioned rules is a violation of the US copyright law and may result in civil liability and criminal prosecution.**

You may use Vikisews patterns for commercial use, to sew custom-made garments and/or create fashion collections, on the condition that the patterns are solely used in a manufacturing setting and are not further shared with individuals.

TOTAL EASE ALLOWANCE

	Bust ease	Waistline ease
cm	10.2–9	20–15.2
inches	4–3 1/2	7 7/8–6

GARMENT LENGTH

Height, cm	Back length, cm	Height, ft	Back length, in
1 (154–160)	48.4–52.5	1 (5'1"–5'3")	19–20 5/8
2 (162–168)	52.4–56.5	2 (5'4"–5'6")	20 5/8–22 1/4
3 (170–176)	56.4–60.5	3 (5'7"–5'9")	22 1/4–23 7/8
4 (178–184)	60.4–64.5	4 (5'10"–6'1")	23 3/4–25 3/8

SUGGESTED FABRIC

To sew this vest, choose suiting fabrics with the following properties: medium-weight, soft, non-stretch or low-stretch. The fiber content can include natural fibers, artificial fibers, blends, or synthetics.

The following fabrics are recommended: bouclé fabric, corduroy, velour, suiting fabric, plush, tweed.

The vest in the photo is made of viscose knit fabric with pile. The fabric is medium weight, soft, and low-stretch. The fiber content is 45% viscose + 25% cotton + 22% polyester + 8% elastane. The fabric weight is 250 g/m².

FABRIC AND NOTIONS REQUIREMENTS

1. Main fabric, 150 cm wide, with a directional print/nap, in meters:

Height, cm	Size							
	34-38	40	42	44	46	48	50	52
1 (154-160)	0.95	1	1	1	1.05	1.05	1.05	1.1
2 (162-168)	1.05	1.05	1.1	1.1	1.1	1.15	1.15	1.2
3 (170-176)	1.1	1.15	1.15	1.2	1.2	1.2	1.25	1.25
4 (178-184)	1.2	1.2	1.25	1.3	1.3	1.35	1.35	1.35

Main fabric, 59" wide, with a directional print/nap, in yards:

Height, ft	Size					
	34-38	40	42-46	48	50	52
1 (5'1"-5'3")	1	1 1/8	1 1/8	1 1/8	1 1/8	1 1/4
2 (5'4"-5'6")	1 1/8	1 1/8	1 1/4	1 1/4	1 1/4	1 1/4
3 (5'7"-5'9")	1 1/4	1 1/4	1 1/4	1 1/4	1 3/8	1 3/8
4 (5'10"-6'1")	1 1/4	1 1/4	1 3/8	1 1/2	1 1/2	1 1/2

2. Lining fabric, 140 cm wide, with a directional print, in meters:

Height, cm	Size				
	34-38	40-46	48	50	52
1 (154-160)	0.45	0.5	0.5	0.6	0.6
2 (162-168)	0.5	0.5	0.55	0.6	0.65
3 (170-176)	0.55	0.55	0.6	0.65	0.7
4 (178-184)	0.6	0.6	0.65	0.7	0.75

Lining fabric, 59" wide, with a directional print, in yards:

Height, ft	Size			
	34-46	48	50	52
1 (5'1"-5'3")	1/2	1/2	5/8	5/8
2 (5'4"-5'6")	1/2	5/8	5/8	3/4
3 (5'7"-5'9")	5/8	5/8	3/4	3/4
4 (5'10"-6'1")	5/8	3/4	3/4	7/8

3. Knit or woven interfacing, 140 cm wide, cut in one direction, in meters:

Height, cm	Size							
	34-38	40	42	44	46	48	50	52
1 (154-160)	0.95	1	1	1	1.05	1.05	1.05	1.1
2 (162-168)	1.05	1.05	1.1	1.1	1.1	1.15	1.15	1.2
3 (170-176)	1.1	1.15	1.15	1.2	1.2	1.2	1.25	1.25
4 (178-184)	1.2	1.2	1.25	1.3	1.3	1.35	1.35	1.35

Knit or woven interfacing, 55" wide, cut in one direction, in yards:

Height, ft	Size					
	34-38	40	42-46	48	50	52
1 (5'1"-5'3")	1	1 1/8	1 1/8	1 1/8	1 1/8	1 1/4
2 (5'4"-5'6")	1 1/8	1 1/8	1 1/4	1 1/4	1 1/4	1 1/4
3 (5'7"-5'9")	1 1/4	1 1/4	1 1/4	1 1/4	1 3/8	1 3/8
4 (5'10"-6'1")	1 1/4	1 1/4	1 3/8	1 1/2	1 1/2	1 1/2

IMPORTANT! When purchasing fabric, please account for shrinkage and buy 5% more than required.

4. Stitched bias-cut fusible stay tape with stitch reinforcement, 1.5 cm wide, in meters:

Height, cm	Size									
	34	36	38	40	42	44	46	48	50	52
1 (154-160)	3.55	3.65	3.75	3.85	3.95	4.05	4.1	4.2	4.3	4.4
2 (162-168)	3.65	3.75	3.85	3.95	4.05	4.15	4.2	4.3	4.4	4.5
3 (170-176)	3.75	3.85	3.95	4.05	4.15	4.25	4.3	4.4	4.5	4.6
4 (178-184)	3.85	3.95	4.05	4.15	4.25	4.35	4.4	4.5	4.6	4.7

Stitched bias-cut fusible stay tape with stitch reinforcement, 5/8" wide, in yards:

Height, ft	Size									
	34	36	38	40	42	44	46	48	50	52
1 (5'1"-5'3")	3 7/8	4	4 1/8	4 1/4	4 3/8	4 3/8	4 1/2	4 5/8	4 3/4	4 3/4
2 (5'4"-5'6")	4	4 1/8	4 1/4	4 3/8	4 3/8	4 1/2	4 5/8	4 3/4	4 3/4	4 7/8
3 (5'7"-5'9")	4 1/8	4 1/4	4 3/8	4 3/8	4 1/2	4 5/8	4 3/4	4 3/4	4 7/8	5
4 (5'10"-6'1")	4 1/4	4 3/8	4 3/8	4 1/2	4 5/8	4 3/4	4 3/4	4 7/8	5	5 1/8

5. Water-soluble stabilizer — four 6×3 cm ($2 \frac{3}{8} \times 1 \frac{1}{8}$ ") rectangle pieces.
6. Four button blanks, 1.2 cm ($\frac{1}{2}$ ") in diameter.
7. Matching thread — 1 spool.

TOOLS AND EQUIPMENT

- sewing machine for construction
- buttonhole foot for the sewing machine

PATTERN PIECES LIST

1. From main fabric:

- center front — cut 2
- side front — cut 2
- center back — cut 2
- side back — cut 2
- front facing — cut 2
- back facing — cut 1 on fold
- hem facing — cut 1 on fold
- welt — cut 2
- pocket facing — cut 2.

2. From lining fabric:

- center front lining — cut 2
- side front lining — cut 2
- center back lining — cut 1 on fold
- side back lining — cut 2.

3. From interfacing:

- center front — cut 2
- side front — cut 2
- center back — cut 2
- side back — cut 2
- front facing — cut 2
- back facing — cut 1 on fold
- hem facing — cut 1 on fold
- welt — cut 2
- pocket facing — cut 2.

IMPORTANT! Don't forget to transfer all pattern markings and notches onto the fabric.

SEAM ALLOWANCES

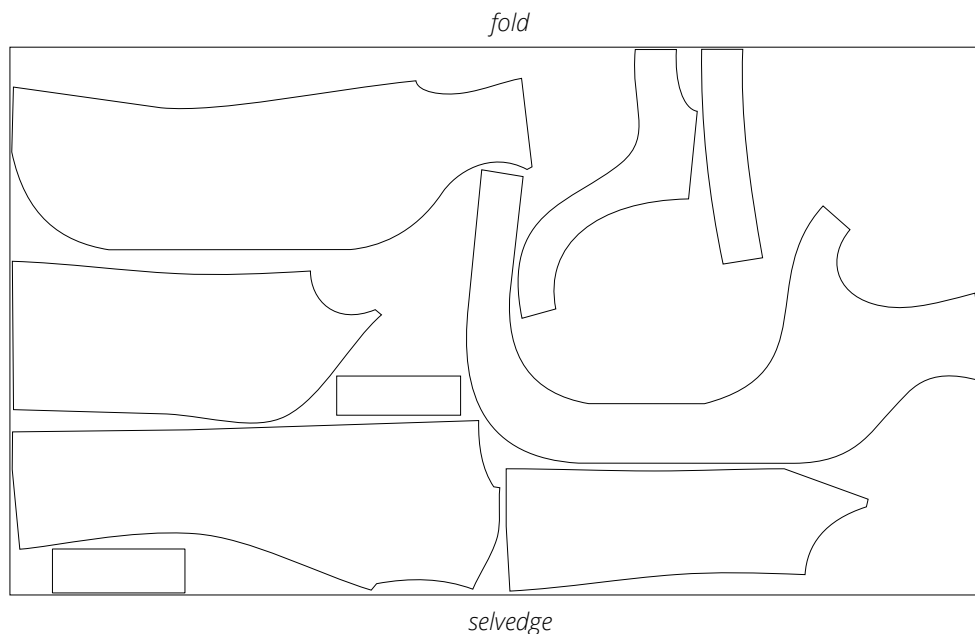
All pattern pieces include seam allowances as follows:

- all edges — 1 cm ($\frac{3}{8}$ ").

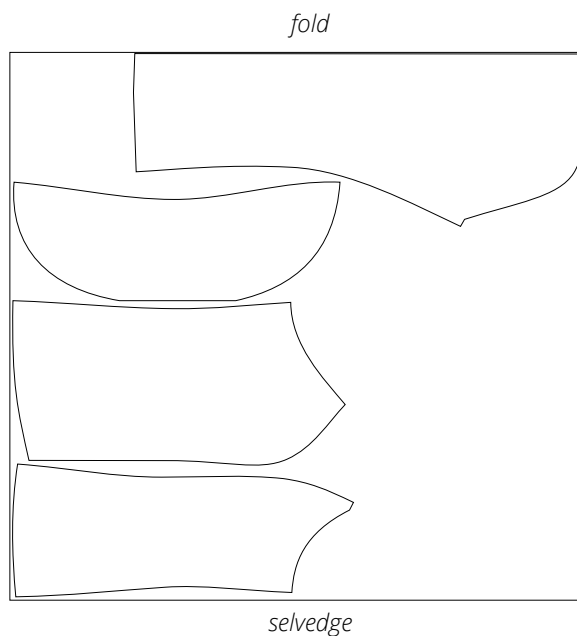
Take this into account when laying out pattern pieces on the fabric.

CUTTING LAYOUT

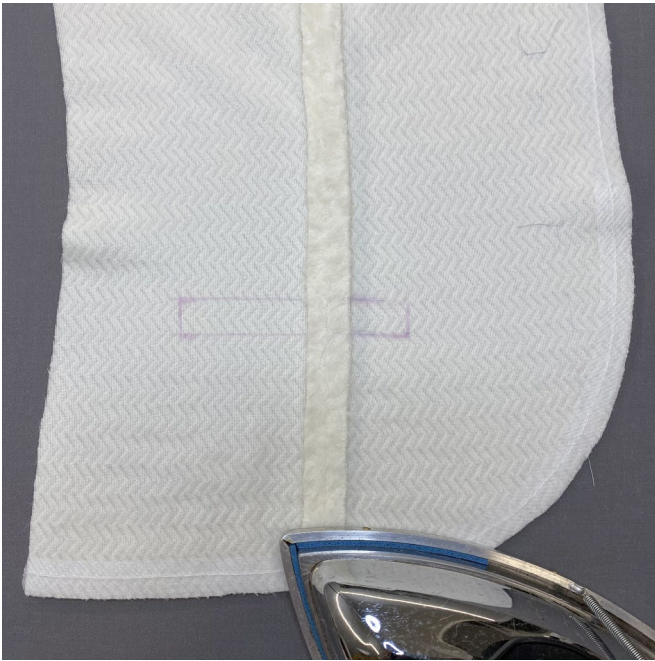
Main fabric, 150 cm (59") wide, with a directional print/nap, cut on fold,
for all sizes in all heights



Lining fabric, 140 cm (55") wide, with a directional print, cut on fold,
for all sizes in all heights



READY? LET'S GET SEWING!



Using tailor's chalk or a disappearing marking pen, transfer the welt placement lines from the pattern to the wrong side of the assembled front piece. Thread-trace along the marked lines.

Important! Prior to using chalk or a marking pen, test it on a scrap of the main fabric to make sure it doesn't leave marks.



Apply an interfacing strip onto the welt area on the wrong side of the assembled front piece.



Fold the welt piece in half along the foldline, wrong sides together, and press.