

FROM THE FOUNDER OF THE #VIKISEWS BRAND

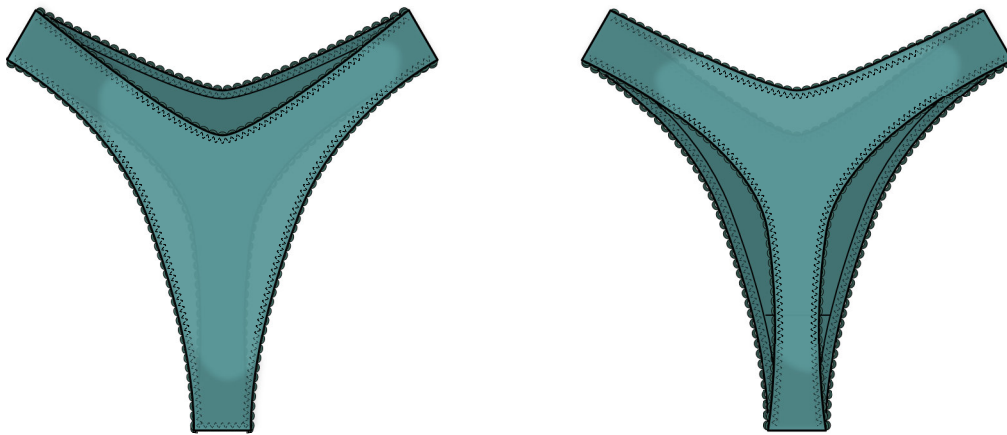


Back in 2016, when I was working on my first set of sewing instructions, I was trying to write them in such a way that even a complete beginner could easily understand and use them to create their very first garment. These instructions laid the foundation for the Vikisews brand, its vision and its mission. I wanted to create modern patterns with the utmost detailed and clear instructions.

Now, with each new collection we are constantly improving our instructions, amending them and adding more relevant details. By the time the final product reaches you, our drafters, correctors, and editors would have spent weeks perfecting every word and every photograph. If you compile a few of our instructions together, you will get a sewing manual that will assist you in sewing all kinds of garments at any difficulty level.

And I would be very happy if these instructions helped you to turn your hobby into a lifelong passion... Enjoy the process! Create your ultimate dream wardrobe! Wear your garments proudly for years to come!

If you have any questions, please contact us at info@vikisews.com — we are always there to help.



TYCHE PATTERN DESCRIPTION

Tyche is a V-shaped, mid-rise thong with side seams. The gusset is lined with cotton jersey. All edges of the thong are finished with picot lingerie elastic.



IMPORTANT!

The contents of this pattern are copyright protected and belong exclusively to Vikisews. You may use Vikisews patterns for personal use. It is prohibited to share Vikisews patterns and instructions with third parties, as well as to publish patterns and instructions online for public access. **Non-compliance with the mentioned rules is a violation of the US copyright law and may result in civil liability and criminal prosecution.**

You may use Vikisews patterns for commercial use, to sew custom-made garments and/or create fashion collections, on the condition that the patterns are solely used in a manufacturing setting and are not further shared with individuals.

SUGGESTED FABRIC

- To sew this thong, choose knit fabrics with the following properties:
- soft, stretchy (1.2–1.5 stretch factor), medium weight
 - the following fabrics are recommended: microfiber jersey, cotton jersey, stretch mesh

You can determine the stretch factor of the fabric yourself. Mark 10 cm (4") along the crosswise grain of the fabric, lay a ruler next to the marked section, and stretch the fabric. Divide the measurement you get by 10.

The thong in the photo is made of stretch mesh. The fabric is soft, medium weight, and stretchy. The fiber content is 95% nylon and 5% spandex. The fabric weight is 90 g/m². The additional material is 100% cotton. The fabric weight is 120 g/m².

FABRIC AND NOTIONS REQUIREMENTS

1. Main fabric, 160 cm wide, with a directional print/nap, in meters:

Height, cm	Size			
	34–36	38–44	46	48–52
1 (154–160) – 2 (162–168)	0.35	0.4	0.4	0.45
3 (170–176) – 4 (178–184)	0.4	0.4	0.45	0.45

Main fabric, 63" wide, with a directional print/nap, in yards:

Height, ft	Size			
	34–36	38–44	46	48–52
1 (5'1"–5'3") – 2 (5'4"–5'6")	3/8	3/8	3/8	1/2
3 (5'7"–5'9") – 4 (5'10"–6'1")	3/8	3/8	1/2	1/2

2. Additional fabric, 180 cm (71") wide, for all heights:

Size	34	38–52
meters	0.15	0.2
yards	1/8	1/4

3. Picot lingerie elastic, 7 mm wide, in centimeters:

Height, cm	Size									
	34	36	38	40	42	44	46	48	50	52
1 (154–160) – 2 (162–168)	187.5	194	201.5	208.5	215.5	223	230.5	238.5	246	253.5
3 (170–176) – 4 (178–184)	190.5	197.5	204.5	211.5	218.5	226	234	241	249	256.5

Picot lingerie elastic, 1/4" wide, in inches:

Height, ft	Size									
	34	36	38	40	42	44	46	48	50	52
1 (5'1"–5'3") – 2 (5'4"–5'6")	73 7/8	76 3/8	79 3/8	82 1/8	84 7/8	87 3/4	90 3/4	93 7/8	96 7/8	99 3/4
3 (5'7"–5'9") – 4 (5'10"–6'1")	75	77 3/4	80 1/2	83 1/4	86	89	92 1/8	94 7/8	98	101

IMPORTANT! When purchasing fabric and elastic, please account for shrinkage and buy 5% more than required.

4. Matching thread — 4 spools (1 spool for the sewing machine + 3 spools for the overlocker)

TOOLS AND EQUIPMENT

- sewing machine for construction
- overlocker for construction and finishing raw edges. This may be replaced with a stretch overlock stitch or a zigzag stitch on the sewing machine (overlock or zigzag stitch width 2–3 mm, stitch length 2.5 mm)

IMPORTANT! We recommend using specialty needles when working with knit fabrics and elastic (for example, STRETCH, SUPER STRETCH, JERSEY, etc.). When sewing, a ball-shaped needle point pushes the knit loops apart without piercing the threads.

PATTERN PIECES LIST

1. From main fabric:

- front — cut 1 on fold
- back — cut 1 on fold

2. Additional fabric:

- gusset — cut 1

IMPORTANT! Don't forget to transfer all pattern markings and notches onto the fabric.

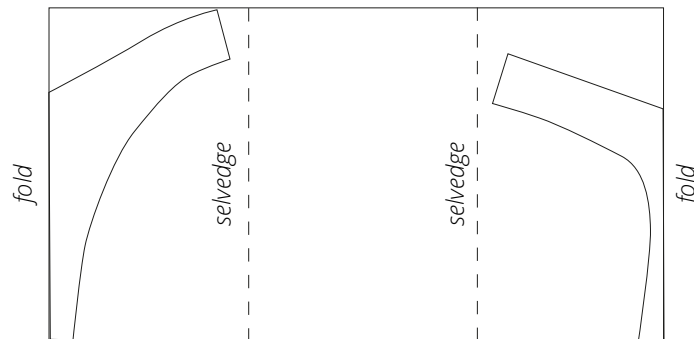
SEAM ALLOWANCES

All pattern pieces include 1 cm (3/8") seam allowances.

Take this into account when laying out pattern pieces on the fabric.

CUTTING LAYOUT

Main fabric, 160 cm (63") wide, with a directional print/nap, cut with two partial folds, for all sizes in all heights



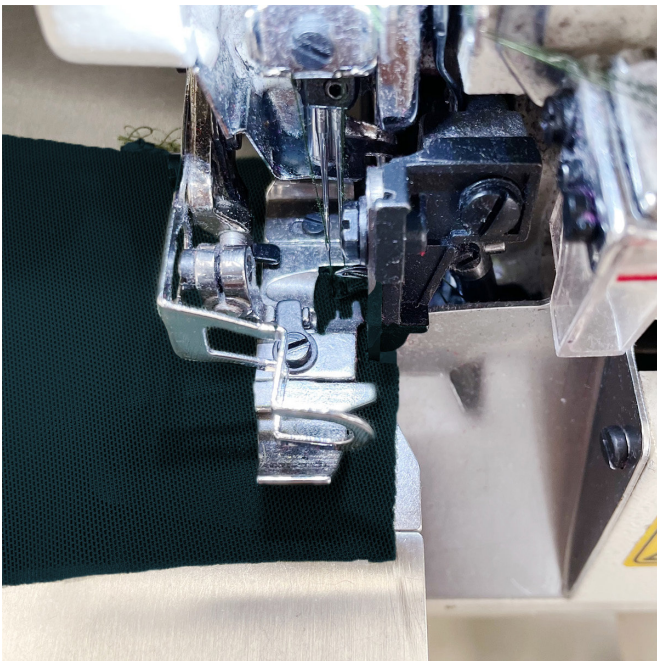
Additional fabric, 180 cm (71") wide, cut on a single layer, for all sizes in all heights



READY? LET'S GET SEWING!



Place the front and back pieces right sides together. Align the side edges and pin.



With the front piece facing up, stitch on the overlocker using a 3-thread overlock stitch.



Press the side seams flat.