

FROM THE FOUNDER OF THE #VIKISEWS BRAND

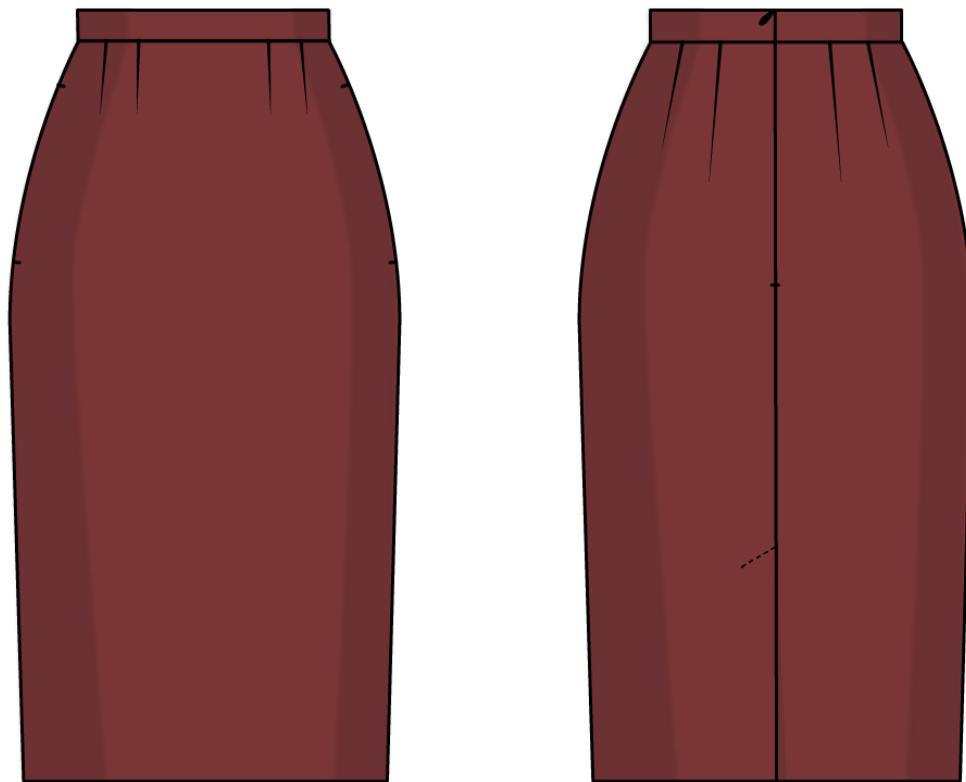


Back in 2016, when I was working on my first set of sewing instructions, I was trying to write them in such a way that even a complete beginner could easily understand and use them to create their very first garment. These instructions laid the foundation for the Vikisews brand, its vision and its mission. I wanted to create modern patterns with the utmost detailed and clear instructions.

Now, with each new collection we are constantly improving our instructions, amending them and adding more relevant details. By the time the final product reaches you, our drafters, correctors, and editors would have spent weeks perfecting every word and every photograph. If you compile a few of our instructions together, you will get a sewing manual that will assist you in sewing all kinds of garments at any difficulty level.

And I would be very happy if these instructions helped you to turn your hobby into a lifelong passion... Enjoy the process! Create your ultimate dream wardrobe! Wear your garments proudly for years to come!

If you have any questions, please contact us at info@vikisews.com — we are always there to help.



CLAUDIA PATTERN DESCRIPTION

Claudia is a semi-fitted skirt with a straight silhouette. The skirt is shaped with front and back waist darts and features a waistband, side seam pockets, and a back vent. The garment has a free-hanging lining and closes with an invisible zipper in the center back seam. Claudia is knee-length.



IMPORTANT!

The contents of this pattern are copyright protected and belong exclusively to Vikisews. You may use Vikisews patterns for personal use. It is prohibited to share Vikisews patterns and instructions with third parties, as well as to publish patterns and instructions online for public access. **Non-compliance with the mentioned rules is a violation of the US copyright law and may result in civil liability and criminal prosecution.**

You may use Vikisews patterns for commercial use, to sew custom-made garments and/or create fashion collections, on the condition that the patterns are solely used in a manufacturing setting and are not further shared with individuals.

TOTAL EASE ALLOWANCE

	Waistline ease	Hipline ease
cm	2.5–3.6	4.4–5
inches	1–1 3/8	1 3/4–2

GARMENT LENGTH

Height, cm	Garment length including waistband, cm	Height, ft	Garment length including waistband, in
1 (154–160)	61.5	1 (5'1"–5'3")	24 1/4
2 (162–168)	63.5	2 (5'4"–5'6")	25
3 (170–176)	65.5	3 (5'7"–5'9")	25 3/4
4 (178–184)	67.5	4 (5'10"–6'1")	26 5/8

SUGGESTED FABRIC

To sew this skirt, choose dress-weight or suiting fabrics with the following properties: medium-weight, non-stretch or low-stretch, opaque, made of natural, artificial, synthetic fibers, or blends.

The following fabrics are recommended: gabardine, suiting, leather, faux leather.

Attention! We do not recommend stretchy, soft, lightweight (dress-weight wool), and loosely woven suiting fabrics.

For the lining, we recommend lining fabrics made of artificial fibers, synthetic fibers, or blends.

The skirt in the photo is made of leather. The fabric is medium weight, pliable, without stretch. The fabric weight is 350 g/m².

The lining is a blend of polyester (55%) and viscose (45%). The fabric weight is 130 g/m².

FABRIC AND NOTIONS REQUIREMENTS

1. Main fabric, 140 cm wide, with a directional print/nap, in meters:

Height, cm	Size							
	34-38	40	42	44	46	48	50	52
1 (154-160)	0.75	0.8	0.85	0.9	0.95	1	1.3	1.3
2 (162-168)	0.75	0.8	0.85	0.9	1	1.05	1.35	1.35
3 (170-176)	0.75	0.8	0.85	0.9	1	1.05	1.4	1.4
4 (178-184)	0.75	0.8	0.85	0.9	1.05	1.1	1.4	1.4

Main fabric, 55" wide, with a directional print/nap, in yards:

Height, ft	Size				
	34-42	44	46	48	50-52
1 (5'1"-5'3")	7/8	1	1	1 1/8	1 3/8
2 (5'4"-5'6")	7/8	1	1 1/8	1 1/8	1 1/2
3 (5'7"-5'9")	7/8	1	1 1/8	1 1/8	1 1/2
4 (5'10"-6'1")	7/8	1	1 1/8	1 1/4	1 1/2

2. Lining fabric, 140 cm wide, with a directional print, in meters:

Height, cm	Size			
	34-36	38	40	42-52
1 (154-160)	0.65	0.75	0.9	0.95
2 (162-168)	0.65	0.75	0.9	0.95
3 (170-176)	0.7	0.75	0.95	1
4 (178-184)	0.7	0.8	0.95	1

Lining fabric, 55" wide, with a directional print, in yards:

Height, ft	Size			
	34-36	38	40	42-52
1 (5'1"-5'3")	3/4	7/8	1	1
2 (5'4"-5'6")	3/4	7/8	1	1
3 (5'7"-5'9")	3/4	7/8	1	1 1/8
4 (5'10"-6'1")	3/4	7/8	1	1 1/8

IMPORTANT! When purchasing fabric, please account for shrinkage and buy 5% more than required.

3. Lightweight knit or woven interfacing, 140 cm (55") wide, for all sizes in all heights — 1.5 m (1 5/8 yd)
4. Stitched bias-cut fusible stay tape with stitch reinforcement, 1.5 cm (5/8") wide — 50 cm (19 5/8")
5. One invisible zipper, 30 cm (11 3/4") long, for all sizes in all heights
6. Double-sided adhesive tape to stick the seam allowances in place (for a leather skirt option) — 1 roll
7. Matching thread — 5 spools (1 spool for the sewing machine + 4 spools for the overlocker)

TOOLS AND EQUIPMENT

- sewing machine for construction
- overlocker for finishing raw edges. This may be replaced with a stretch overlock stitch or a zigzag stitch on the sewing machine (overlock or zigzag stitch width 2–3 mm, stitch length 2.5 mm)
- invisible zipper foot for the sewing machine
- one-sided foot for the sewing machine to attach the lining next to the zipper
- teflon or walking foot for the sewing machine (for a leather skirt option)

PATTERN PIECES LIST

1. From main fabric:

- front — cut 1 on fold
- back — cut 2
- waistband — cut 1
- pocket facing — cut 2

2. From lining fabric:

- front lining — cut 1 on fold
- right back lining — cut 1
- left back lining — cut 1
- pocket lining — cut 4

3. From interfacing:

- waistband — cut 1

***IMPORTANT!** Don't forget to transfer all pattern markings and notches onto the fabric.*

Additionally, cut the following pieces from interfacing:

- two 1.5 cm (5/8") wide strips to interface the zipper section of the center seam allowances on the back pieces (length according to the pattern)
- one 1.5 cm (5/8") wide strip to interface the vent extension on the right back piece (length according to the pattern)
- one 5 cm (2") wide strip to interface the vent extension on the left back piece (length according to the pattern).

The interfacing strips should be cut on the straight grain (parallel to the selvedge).

***IMPORTANT!** The pattern pieces that have the word "face" printed on them should be placed with the blank side onto the right side of fabric when cutting.*

SEAM ALLOWANCES

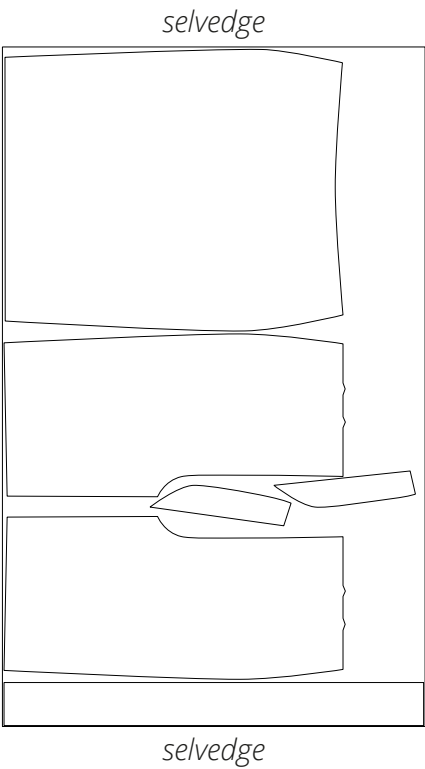
All pattern pieces include the seam allowances as follows:

- garment hem allowance — 4 cm (1 5/8")
- lining hem allowance — 2 cm (3/4")
- all other edges — 1 cm (3/8").

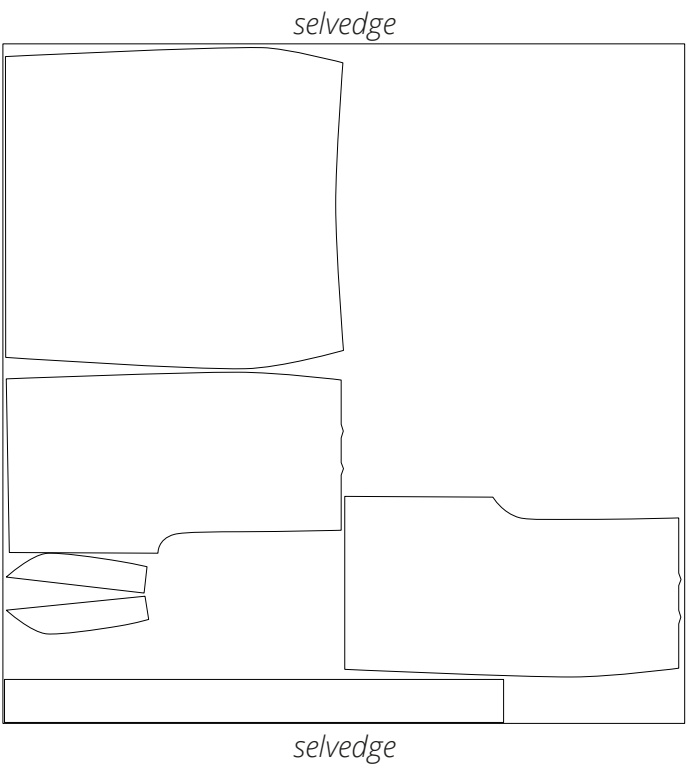
Take this into account when laying out pattern pieces on the fabric.

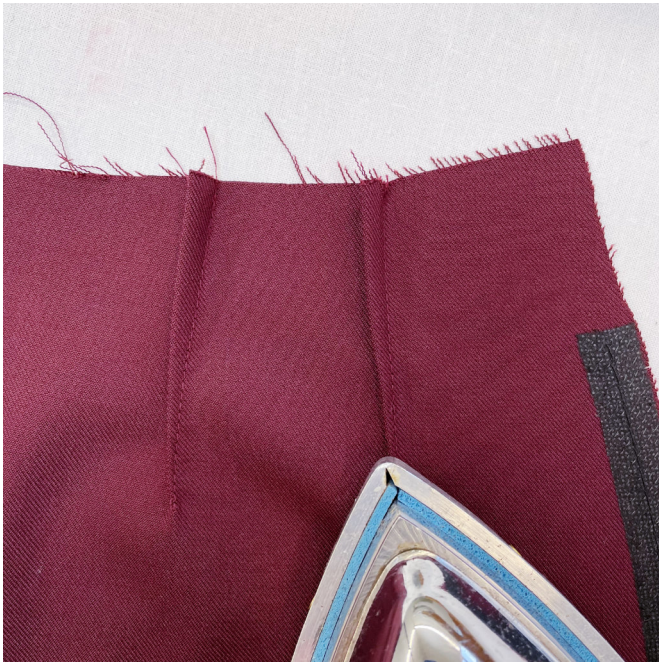
CUTTING LAYOUT

Main fabric, 140 cm (55") wide, with a directional print/nap, cut on a single layer, for sizes 34-44 in all heights



Main fabric, 140 cm (55") wide, with a directional print/nap, cut on a single layer, for sizes 46-52 in all heights





On the front piece, press the darts towards the center front.

Press to shrink out the fullness at the dart points.



On the back pieces, press the darts towards the center back edge. Press to shrink out the fullness at the dart points.



With the right side facing up, overlock one long edge of each pocket facing piece.