

FROM THE FOUNDER OF THE #VIKISEWS BRAND



Back in 2016, when I was working on my first set of sewing instructions, I was trying to write them in such a way that even a complete beginner could easily understand and use them to create their very first garment. These instructions laid the foundation for the Vikisews brand, its vision and its mission. I wanted to create modern patterns with the utmost detailed and clear instructions.

Now, with each new collection we are constantly improving our instructions, amending them and adding more relevant details. By the time the final product reaches you, our drafters, correctors, and editors would have spent weeks perfecting every word and every photograph. If you compile a few of our instructions together, you will get a sewing manual that will assist you in sewing all kinds of garments at any difficulty level.

And I would be very happy if these instructions helped you to turn your hobby into a lifelong passion... Enjoy the process! Create your ultimate dream wardrobe! Wear your garments proudly for years to come!

If you have any questions, please contact us at info@vikisews.com — we are always there to help.



MARED PATTERN DESCRIPTION

Mared is a straight-cut, semi-fitted, fully-lined, double-breasted coat. The front has bust darts transferred to the pocket line, welt pockets with flaps, and a welt chest pocket on the left side. The coat features a side panel and a center back seam ending with a vent. It has a turned-down, notched collar with a collar stand and an extended shoulder line. The shaping of the shoulders is achieved with shoulder pads. The long two-piece sleeves feature a vent in the elbow seam and decorative buttons. The coat fastens with buttons and buttonholes and is completed by a removable belt with a buckle and grommets. The belt is secured at the waist level with belt loops. Mared is above-ankle length and features topstitching along the center front, collar, pocket flaps, and welt edges. The belt is decorated with several rows of topstitching.



IMPORTANT!

The contents of this pattern are copyright protected and belong exclusively to Vikisews. You may use Vikisews patterns for personal use. It is prohibited to share Vikisews patterns and instructions with third parties, as well as to publish patterns and instructions online for public access. **Non-compliance with the mentioned rules is a violation of the US copyright law and may result in civil liability and criminal prosecution.**

You may use Vikisews patterns for commercial use, to sew custom-made garments and/or create fashion collections, on the condition that the patterns are solely used in a manufacturing setting and are not further shared with individuals.

TOTAL EASE ALLOWANCE

	Bust ease	Waistline ease	Hipline ease	Upper arm ease
cm	18.4–23.2	36.6–40.6	12.8–17.6	10.2–12.2
inches	7 1/4–9 1/8	14 3/8–16	5–6 7/8	4–4 3/4

GARMENT LENGTH, SLEEVE LENGTH

Height, cm	Garment length at center back, cm	Sleeve length, cm	Height, ft	Garment length at center back, in	Sleeve length, in
1 (154–160)	121	61.6–63.3	1 (5'1"–5'3")	47 5/8	24 1/4–24 7/8
2 (162–168)	125	63.6–65.2	2 (5'4"–5'6")	49 1/4	25–25 5/8
3 (170–176)	129	65.6–67.1	3 (5'7"–5'9")	50 3/4	25 7/8–26 3/8
4 (178–184)	133	67.6–69	4 (5'10"–6'1")	52 3/8	26 5/8–27 1/8

SUGGESTED FABRIC

To sew this coat choose coating fabrics that are structured, low- or non-stretch.

The fiber content may be 100% wool or may include artificial (e.g. viscose) or synthetic fibers (polyester, elastane, acrylic, etc.).

Choose plain-colored or mélange fabrics, with short or medium pile or without pile.

We do not recommend choosing printed fabrics (such as check), since it will significantly increase fabric requirements and will complicate the sewing process due to pattern matching.

We recommend the following fabrics: cashmere, alpaca, wool coating, bouclé, melton wool.

The recommended fabric weight is 350–600 g/m².

The coat in the photo is made of coating wool. The fabric is medium weight, non-stretch, structured, and has a short pile. The fiber content is a blend of wool and polyester.

The coat is reinforced with fusible interfacing.

Attention! We do not recommend fabrics with the following properties:

- very stretchy, lightweight, loosely woven, soft, non-structured.

For the lining, choose lining fabrics made of viscose, viscose + elastane, or viscose + polyester. The lining fabric should be smooth, opaque, pleasant to the touch, non- or low-stretch.

FABRIC AND NOTIONS REQUIREMENTS

1.1. Main fabric, 140 cm wide, with a directional print/nap, cut on fold, in meters:

Height, cm	Sizes									
	34	36	38	40	42	44	46	48	50	52
1 (154–160)	2.9	2.9	2.9	3.25	3.35	3.5	3.5	3.5	3.5	3.5
2 (162–168)	2.95	2.95	2.95	3.3	3.4	3.6	3.6	3.6	3.6	3.6
3 (170–176)	3.05	3.05	3.05	3.35	3.4	3.65	3.65	3.65	3.7	3.7
4 (178–184)	3.1	3.15	3.15	3.5	3.5	3.75	3.75	3.75	3.75	3.8

Main fabric, 55" wide, with a directional print/nap, cut on fold, in yards:

Height, ft	Sizes									
	34	36	38	40	42	44	46	48	50	52
1 (5'1"–5'3")	3 1/8	3 1/8	3 1/8	3 1/2	3 5/8	3 7/8	3 7/8	3 7/8	3 7/8	3 7/8
2 (5'4"–5'6")	3 1/4	3 1/4	3 1/4	3 5/8	3 3/4	3 7/8	3 7/8	3 7/8	3 7/8	3 7/8
3 (5'7"–5'9")	3 3/8	3 3/8	3 3/8	3 5/8	3 3/4	4	4	4	4	4
4 (5'10"–6'1")	3 3/8	3 1/2	3 1/2	3 7/8	3 7/8	4 1/8	4 1/8	4 1/8	4 1/8	4 1/8

1.2. Main fabric, 150 cm wide, with a directional print/nap, cut on fold, in meters:

Height, cm	Sizes									
	34	36	38	40	42	44	46	48	50	52
1 (154–160)	2.85	2.85	2.9	2.9	2.9	2.9	2.95	3.15	3.2	3.35
2 (162–168)	2.95	2.95	2.95	2.95	2.95	3	3	3.25	3.3	3.42
3 (170–176)	3	3.05	3.05	3.05	3.05	3.05	3.05	3.35	3.35	3.45
4 (178–184)	3.1	3.1	3.1	3.1	3.1	3.15	3.15	3.45	3.45	3.65

Main fabric, 59" wide, with a directional print/nap, cut on fold, in yards:

Height, ft	Sizes									
	34	36	38	40	42	44	46	48	50	52
1 (5'1"–5'3")	3 1/8	3 1/8	3 1/8	3 1/8	3 1/8	3 1/8	3 1/4	3 1/2	3 1/2	3 5/8
2 (5'4"–5'6")	3 1/4	3 1/4	3 1/4	3 1/4	3 1/4	3 1/4	3 1/4	3 1/2	3 5/8	3 3/4
3 (5'7"–5'9")	3 1/4	3 3/8	3 3/8	3 3/8	3 3/8	3 3/8	3 3/8	3 5/8	3 5/8	3 3/4
4 (5'10"–6'1")	3 3/8	3 3/8	3 3/8	3 3/8	3 3/8	3 1/2	3 1/2	3 3/4	3 3/4	4

2. Lining fabric, 140 cm wide, with a non-directional print, cut on fold, in meters:

Height, cm	Sizes									
	34	36	38	40	42	44	46	48	50	52
1 (154–160)	1.95	1.95	1.95	1.95	1.95	2.05	2.35	2.35	2.35	2.35
2 (162–168)	2	2	2	2	2	2.1	2.45	2.45	2.45	2.45
3 (170–176)	2.05	2.05	2.05	2.05	2.05	2.15	2.5	2.5	2.5	2.5
4 (178–184)	2.1	2.1	2.1	2.1	2.1	2.2	2.6	2.6	2.6	2.6

Lining fabric, 55" wide, with a non-directional print, cut on fold, in yards:

Height, ft	Sizes									
	34	36	38	40	42	44	46	48	50	52
1 (5'1"–5'3")	2 1/8	2 1/8	2 1/8	2 1/8	2 1/8	2 1/4	2 5/8	2 5/8	2 5/8	2 5/8
2 (5'4"–5'6")	2 1/8	2 1/8	2 1/8	2 1/8	2 1/8	2 1/4	2 5/8	2 5/8	2 5/8	2 5/8
3 (5'7"–5'9")	2 1/4	2 1/4	2 1/4	2 1/4	2 1/4	2 3/8	2 3/4	2 3/4	2 3/4	2 3/4
4 (5'10"–6'1")	2 1/4	2 1/4	2 1/4	2 1/4	2 1/4	2 3/8	2 7/8	2 7/8	2 7/8	2 7/8

IMPORTANT! When purchasing main fabric and lining, please account for shrinkage and buy 5% more than required.

3. Interfacing, 55 g/m², 140 cm wide, cut on fold, in meters:

Height, cm	Sizes									
	34	36	38	40	42	44	46	48	50	52
1 (154–160)	2.65	2.65	2.65	2.65	2.65	2.9	2.95	2.95	2.95	3
2 (162–168)	2.7	2.7	2.7	2.75	2.75	3	3.05	3.05	3.05	3.05
3 (170–176)	2.8	2.8	2.8	2.8	2.8	3.1	3.1	3.1	3.1	3.15
4 (178–184)	2.9	2.9	2.9	2.9	2.9	3.15	3.2	3.2	3.2	3.2

Interfacing, 55 g/m², 55" wide, cut on fold, in yards:

Height, ft	Sizes									
	34	36	38	40	42	44	46	48	50	52
1 (5'1"–5'3")	2 7/8	2 7/8	2 7/8	2 7/8	2 7/8	3 1/8	3 1/4	3 1/4	3 1/4	3 1/4
2 (5'4"–5'6")	3	3	3	3	3	3 1/4	3 3/8	3 3/8	3 3/8	3 3/8
3 (5'7"–5'9")	3	3	3	3	3	3 3/8	3 3/8	3 3/8	3 3/8	3 1/2
4 (5'10"–6'1")	3 1/8	3 1/8	3 1/8	3 1/8	3 1/8	3 1/2	3 1/2	3 1/2	3 1/2	3 1/2

4. Interfacing, 80 g/m², 140 cm (55") wide, cut on fold:

Size	34	36	38	40	42	44	46	48	50	52
meters	1.4	1.45	1.5	1.5	1.55	1.6	1.65	1.7	1.7	1.75
yards	1 1/2	1 5/8	1 5/8	1 5/8	1 3/4	1 3/4	1 3/4	1 7/8	1 7/8	1 7/8

5. All-purpose matching thread for the main fabric — 2 spools.

6. All-purpose matching thread for the lining fabric — 1 spool.

7. Topstitching thread (for example, Madeira No. 35) — 1 spool. It may be replaced with two all-purpose threads pulled through the machine needle.

8. Straight-grain fusible stay tape, 1–1.5 cm (3/8–5/8") wide — about 7 m (7 5/8 yd).

9. Bias-cut fusible stay tape, 1–1.5 cm (3/8–5/8") wide — about 5 m (5 1/2 yd).

10. Buttons:

- seven regular buttons, 2.5–2.7 cm (1–1 1/8") in diameter
- five backing buttons, 1 cm (3/8") in diameter
- eight buttons for the vent on the sleeve, 1.2–1.5 cm (1/2–5/8") in diameter.

11. One 5 cm (2") wide prong buckle for the belt.

12. Six grommets for the belt, 5 mm (1/4") in diameter.

13. One pair of non-foam, layered shoulder pads for set-in coat sleeves. The recommended height of the shoulder pads is 1–1.5 cm (3/8–5/8").

14. One pair of sleeve heads. As an alternative, you may use a scrap (0.1 m or 1/8 yd) of polyester batting with a weight of 100 g/m² to make them.

TOOLS AND EQUIPMENT

- sewing machine for construction
- buttonhole foot
- one-sided foot
- sewing machine needles no. 90–100 for the main (coating) fabric
- sewing machine needles no. 70–80 for the lining fabric
- press tool and molds for installing grommets, hole puncher.

PATTERN PIECES NAMES AND QUANTITY

1. From main fabric:

- front — cut 2
- side — cut 2
- back — cut 2
- undercollar — cut 2
- upper collar — cut 1 on fold
- collar stand — cut 2
- top sleeve — cut 2
- bottom sleeve — cut 2
- back neck facing — cut 1 on fold
- front facing — cut 2
- pocket top flap — cut 2
- welt — cut 2
- pocket facing — cut 2
- chest pocket welt — cut 1
- chest pocket facing — cut 1
- belt — cut 1
- belt loop — cut 1.

2. From lining fabric:

- back lining — cut 2
- front lining — cut 2
- side lining — cut 2
- top sleeve lining — cut 2
- bottom sleeve lining — cut 2
- pocket bottom flap — cut 2
- pocket top lining — cut 2
- pocket bottom lining — cut 2
- chest pocket lining — cut 1.

3. From interfacing, 55 g/m²:

- front — cut 2
- side — cut 2
- back — cut 2
- undercollar — cut 2
- upper collar — cut 1 on fold
- collar stand — cut 2
- back neck facing — cut 1 on fold
- front facing — cut 2
- pocket top flap — cut 2
- welt — cut 2
- pocket facing — cut 2
- chest pocket welt — cut 1
- chest pocket facing — cut 1
- belt loop — cut 1 (to be interfaced if the coat is made of soft, lightweight fabric).

Partially cut the following pieces from interfacing:

- top sleeve (sleeve cap, vent area, bottom part) — cut 2
- bottom sleeve (sleeve cap, vent area, bottom part) — cut 2.

4. From interfacing, 80 g/m²:

- belt — cut 1.

An additional layer of interfacing should be applied to the following pieces:

- back, front, side — see the marking on the pattern pieces.

IMPORTANT! Don't forget to transfer all pattern markings and notches onto the fabric.

Additionally, cut a strip of interfacing for finishing the welt pocket. The strip should be cut on the straight grain.

Measure the exact size on the front and side pattern pieces.

SEAM ALLOWANCES

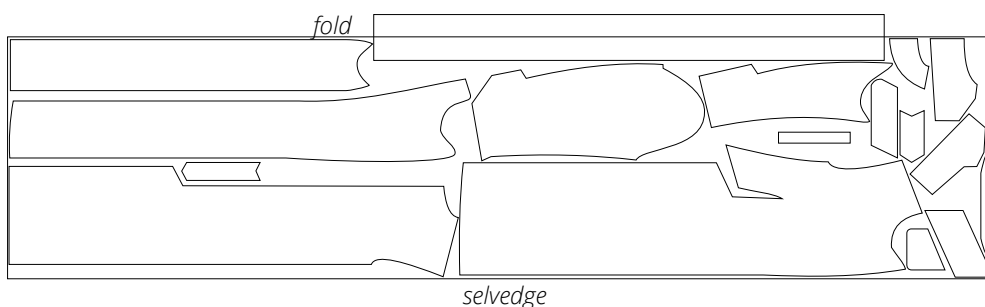
All pattern pieces include seam allowances as follows:

- garment hem allowance — 4 cm (1 5/8")
- sleeve hem allowance — 4 cm (1 5/8")
- pocket lining edges — 1.5 cm (5/8")
- all other edges — 1 cm (3/8").

Take this into account when laying out pattern pieces on the fabric.

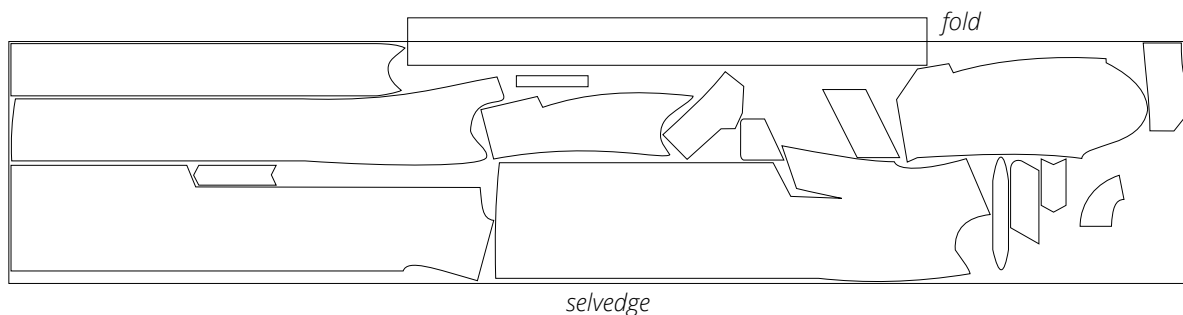
CUTTING LAYOUT

Main fabric, 140 cm (55") wide, with a directional print/nap, cut on fold, for sizes 34–38 in all heights; main fabric, 150 cm (59") wide, with a directional print/nap, cut on fold, for sizes 34–46 in all heights



Attention! Cut the belt piece on a single layer out of leftover fabric. Cut only one of the following pieces: belt loop, chest pocket welt, chest pocket facing.

Main fabric, 140 cm (55") wide, with a directional print/nap, cut on fold, for sizes 40–42 in all heights; main fabric, 150 cm (59") wide, with a directional print/nap, cut on fold, for sizes 48–52 in all heights



Attention! Cut the belt and back neck facing pieces on a single layer out of leftover fabric. Cut only one of the following pieces: belt loop, chest pocket welt, chest pocket facing.



Press the dart seam allowances open. In the top part of the dart, press the two strips in opposite directions. Trim the strips, leaving 1–1.5 cm (3/8–5/8") above the dart point.



Trim the strip seam allowances to match the width of the dart seam allowances. Grade the seam allowances by trimming the top seam allowance down to 5 mm (just under 1/4") and the bottom seam allowance down to 1 cm (3/8"). Press the trimmed seam allowances and areas underneath them.



Clip into the strip seam allowances at the tip of the dart and lay them out flat.



Cut a 1.5 cm (5/8") wide strip of interfacing on the straight grain. Position the sides of the pocket edge-to-edge and use the interfacing strip to fuse them together. The interfacing strip should extend beyond the dart by 1 cm (3/8").



Place the front and side pieces right sides together. Align the edges, match the notches, and pin. Stitch on the sewing machine, backstitching at the beginning and end of the seam. Use a 3 mm stitch length and keep the side piece facing up when stitching. Press the seam flat.