

FROM THE FOUNDER OF THE #VIKISEWS BRAND

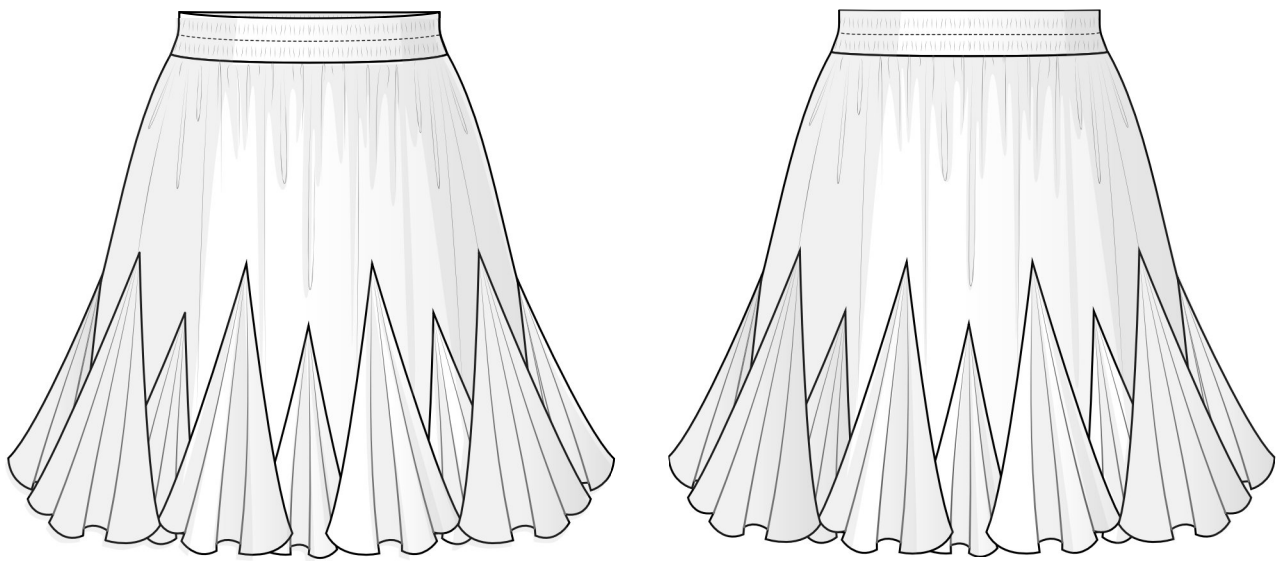


Back in 2016, when I was working on my first set of sewing instructions, I was trying to write them in such a way that even a complete beginner could easily understand and use them to create their very first garment. These instructions laid the foundation for the Vikisews brand, its vision and its mission. I wanted to create modern patterns with the utmost detailed and clear instructions.

Now, with each new collection we are constantly improving our instructions, amending them and adding more relevant details. By the time the final product reaches you, our drafters, correctors, and editors would have spent weeks perfecting every word and every photograph. If you compile a few of our instructions together, you will get a sewing manual that will assist you in sewing all kinds of garments at any difficulty level.

And I would be very happy if these instructions helped you to turn your hobby into a lifelong passion... Enjoy the process! Create your ultimate dream wardrobe! Wear your garments proudly for years to come!

If you have any questions, please contact us at info@vikisews.com — we are always there to help.



SHILIN PATTERN DESCRIPTION

Shilin is a semi-fitted, lined half-circle skirt. It features sixteen flounced inserts and an elastic waistband. Shilin is above-knee length.



IMPORTANT!

The contents of this pattern are copyright protected and belong exclusively to Vikisews. You may use Vikisews patterns for personal use. It is prohibited to share Vikisews patterns and instructions with third parties, as well as to publish patterns and instructions online for public access. **Non-compliance with the mentioned rules is a violation of the US copyright law and may result in civil liability and criminal prosecution.**

You may use Vikisews patterns for commercial use, to sew custom-made garments and/or create fashion collections, on the condition that the patterns are solely used in a manufacturing setting and are not further shared with individuals.

TOTAL EASE ALLOWANCE

	Waistline ease	Hipline ease (estimated)
cm	50	104.9–115.3
inches	19 5/8	41 1/4–45 3/8

GARMENT LENGTH

Height, cm	Garment length including waistband, cm	Height, ft	Garment length including waistband, in
1 (154–160)	37	1 (5'1"–5'3")	14 5/8
2 (162–168)	39	2 (5'4"–5'6")	15 3/8
3 (170–176)	41	3 (5'7"–5'9")	16 1/8
4 (178–184)	43	4 (5'10"–6'1")	16 7/8

SUGGESTED FABRIC

To sew this skirt, choose dress-weight fabrics with the following properties: medium weight, soft, non-stretch. The fiber content can include natural fibers, artificial fibers, blends, or synthetics.

The following fabrics are recommended: dress-weight viscose, denim, linen, gauze, poplin, sateen, cotton, natural or artificial silk, eyelet fabric, challis.

For the lining, we recommend sateen, poplin, batiste.

Attention! We do not recommend stretchy knit fabrics and lightweight sheer fabrics (chiffon, organza, stretch lace).

The skirt in the photo is made of a viscose and silk blend. The fabric is medium weight, soft, structured, and non-stretch. The fiber content is 80% viscose and 20% silk. The fabric weight is 110 g/m².

The lining is made of batiste. The fiber content is 100% cotton. The fabric weight is 72 g/m².

FABRIC AND NOTIONS REQUIREMENTS

1. Main fabric, 150 cm wide, with a directional print/nap, in meters:

Height, cm	Size						
	34	36	38	40	42-44	46-50	52
1 (154-160)	2.05	2.1	2.1	2.1	2.1	2.15	2.15
2 (162-168)	2.2	2.2	2.2	2.2	2.25	2.25	2.3
3 (170-176)	2.3	2.3	2.3	2.35	2.35	2.35	2.35
4 (178-184)	2.35	2.35	2.4	2.4	2.45	2.45	2.45

Main fabric, 59" wide, with a directional print/nap, in yards:

Height, ft	Size			
	34-38	40	42-44	46-52
1 (5'1"-5'3")	2 1/4	2 1/4	2 1/4	2 3/8
2 (5'4"-5'6")	2 3/8	2 3/8	2 1/2	2 1/2
3 (5'7"-5'9")	2 1/2	2 5/8	2 5/8	2 5/8
4 (5'10"-6'1")	2 5/8	2 5/8	2 5/8	2 5/8

2. Lining fabric, 140 cm wide, with a directional print, in meters:

Height, cm	Size	
	34-42	44-52
1 (154-160)	0.65	0.7
2 (162-168)	0.7	0.7
3 (170-176)	0.75	0.75
4 (178-184)	0.8	0.8

Lining fabric, 55" wide, with a directional print, in yards:

Height, ft	Size
	34-52
1 (5'1"-5'3")	3/4
2 (5'4"-5'6")	3/4
3 (5'7"-5'9")	7/8
4 (5'10"-6'1")	7/8

3. Elastic, 5 cm (2") wide, for all heights:

Size	34	36-38	40	42	44-46	48	50	52
meters	0.6	0.65	0.7	0.75	0.8	0.85	0.9	0.95
yards	5/8	3/4	3/4	7/8	7/8	7/8	1	1

***IMPORTANT!** When purchasing fabric, please account for shrinkage and buy 5% more than required.*

4. Matching thread — 4 spools (1 spool for the sewing machine + 3 spools for the overlocker).

TOOLS AND EQUIPMENT

- sewing machine for construction
- overlocker for finishing raw edges. This may be replaced with a stretch overlock stitch or a zigzag stitch on the sewing machine (overlock or zigzag stitch width 2–3 mm, stitch length 2.5 mm)
- elastic threader or safety pin

PATTERN PIECES LIST

1. From main fabric:

- skirt — cut 2 on fold
- waistband — cut 1 on fold
- insert 1 — cut 8
- insert 2 — cut 8

***IMPORTANT!** Don't forget to transfer all pattern markings and notches onto the fabric.*

2. From lining fabric:

- lining — cut 2 on fold

SEAM ALLOWANCES

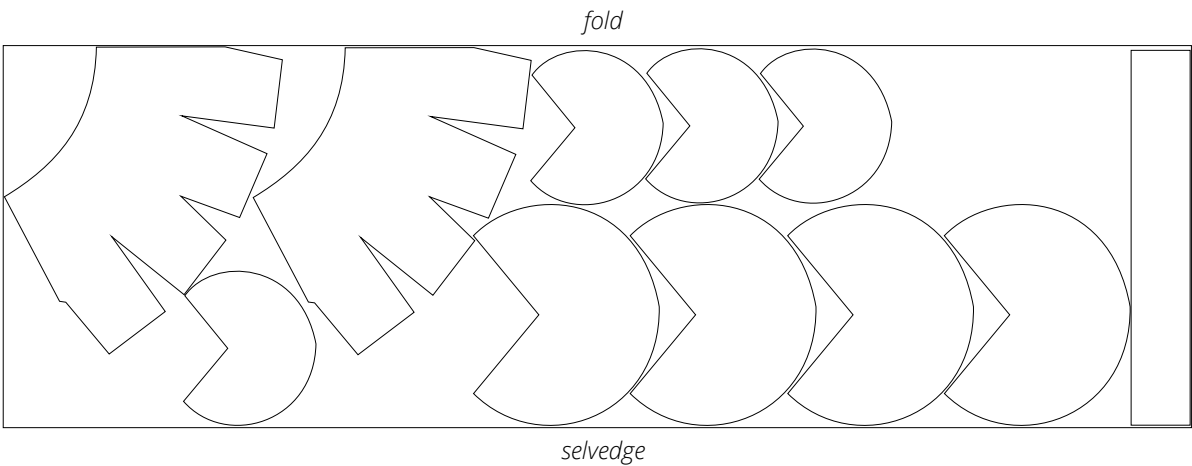
All pattern pieces include seam allowances as follows:

- all edges — 1 cm (3/8").

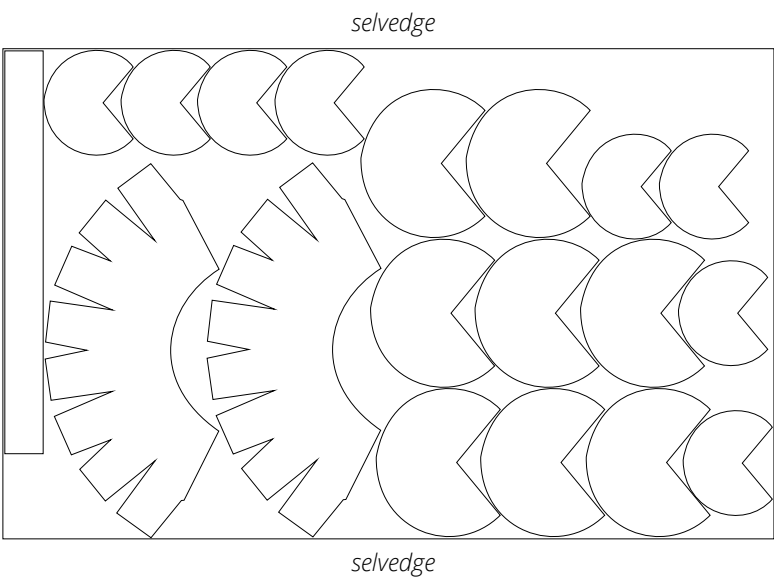
Take this into account when laying out pattern pieces on the fabric.

CUTTING LAYOUT

Main fabric, 150 cm (59") wide, with a directional print/nap,
cut on fold, for all sizes in heights 1-3



Main fabric, 150 cm (59") wide, with a directional print/nap,
cut on a single layer, for sizes 34-40 in height 4





Place one of the skirt pieces and an insert 1 right sides together. Align the center corner of the insert 1 piece with the upper point of the larger curved cutout on the skirt piece.



Align the edges, match the notches, and pin.



Hand-baste at 9 mm (just under 3/8") from the edge. Stitch on the sewing machine, backstitching at the beginning and end of the seam.