

# FROM THE FOUNDER OF THE #VIKISEWS BRAND

---

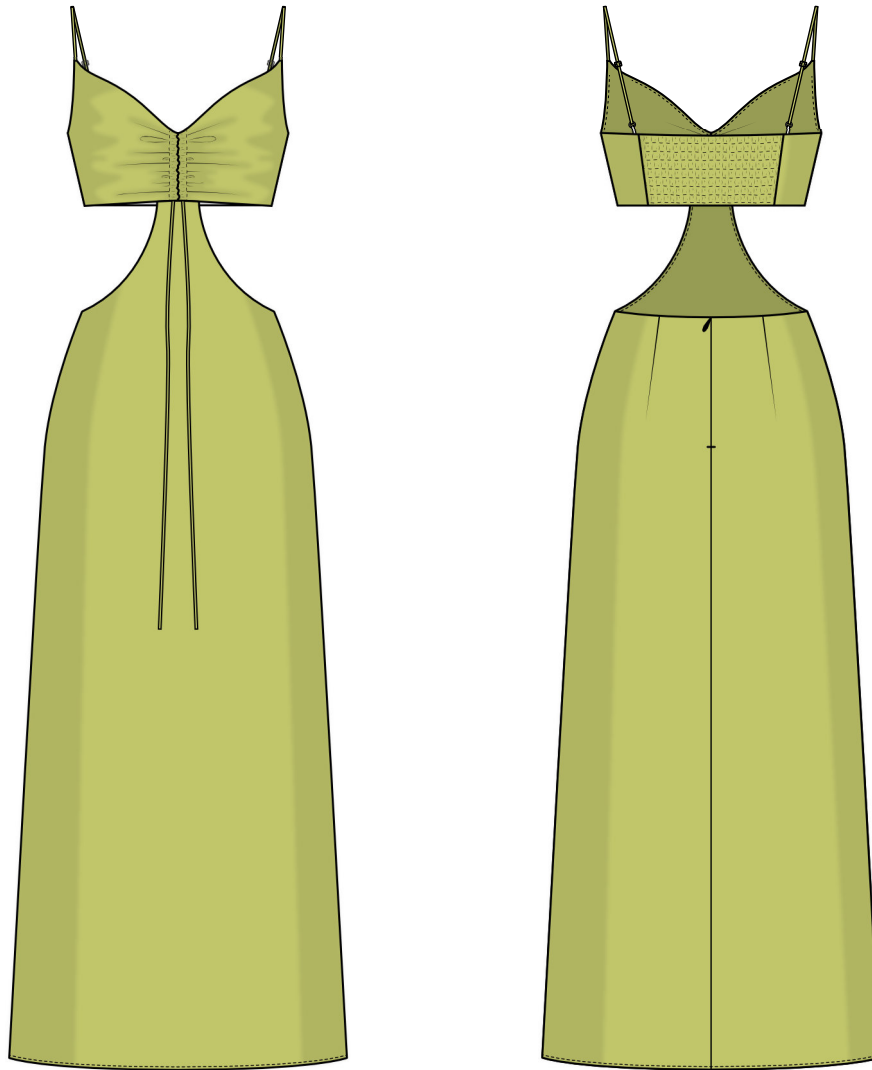


Back in 2016, when I was working on my first set of sewing instructions, I was trying to write them in such a way that even a complete beginner could easily understand and use them to create their very first garment. These instructions laid the foundation for the Vikisews brand, its vision and its mission. I wanted to create modern patterns with the utmost detailed and clear instructions.

Now, with each new collection we are constantly improving our instructions, amending them and adding more relevant details. By the time the final product reaches you, our drafters, correctors, and editors would have spent weeks perfecting every word and every photograph. If you compile a few of our instructions together, you will get a sewing manual that will assist you in sewing all kinds of garments at any difficulty level.

And I would be very happy if these instructions helped you to turn your hobby into a lifelong passion... Enjoy the process! Create your ultimate dream wardrobe! Wear your garments proudly for years to come!

If you have any questions, please contact us at [info@vikisews.com](mailto:info@vikisews.com) — we are always there to help.



## TILLA PATTERN DESCRIPTION

---

Tilla is a close-fitting dress with adjustable spaghetti straps. The bodice and skirt are separated with a waist cut-out. The self-lined bodice is gathered with ties threaded through center front casings. The center back bodice is shaped with rows of shirring. The dress has a low shaped neckline. The bias-cut skirt of the dress features a shaped extension at the front, which is tapered towards the bodice. There are waist darts on the back skirt and a center back seam with an invisible zipper. Tilla is above-ankle length.



## IMPORTANT!

---

The contents of this pattern are copyright protected and belong exclusively to Vikisews. You may use Vikisews patterns for personal use. It is prohibited to share Vikisews patterns and instructions with third parties, as well as to publish patterns and instructions online for public access. **Non-compliance with the mentioned rules is a violation of the US copyright law and may result in civil liability and criminal prosecution.**

You may use Vikisews patterns for commercial use, to sew custom-made garments and/or create fashion collections, on the condition that the patterns are solely used in a manufacturing setting and are not further shared with individuals.

## TOTAL EASE ALLOWANCE

	Bust ease	Waistline ease	Hipline ease
cm	1.2 to -3	0.8	4.9–5.2
inches	1/2 to -1 1/8	3/8	1 7/8–2

## GARMENT LENGTH

Height, cm	Back length from waist down, cm	Height, ft	Back length from waist down, in
1 (154–160)	87	1 (5'1"–5'3")	34 1/4
2 (162–168)	90	2 (5'4"–5'6")	35 3/8
3 (170–176)	93	3 (5'7"–5'9")	36 5/8
4 (178–184)	96	4 (5'10"–6'1")	37 3/4

## SUGGESTED FABRIC

To sew this dress, choose dress-weight fabrics with the following properties: light to medium weight, non-stretch or low-stretch. The fiber content can include natural fibers, artificial fibers, blends, or synthetics.

The following fabrics are recommended: dress-weight viscose, crepe, natural or artificial silk, challis.

**Attention!** We do not recommend stretchy knit fabrics.

The dress in the photo is made of dress-weight silk. The fabric is medium weight and has very little stretch. The fiber content is a blend of polyester (98%) and elastane (2%). The fabric weight is 124 g/m<sup>2</sup>.

# FABRIC AND NOTIONS REQUIREMENTS

1. Main fabric, 140 cm wide, with a directional print/nap, in meters:

Height, cm	Size									
	34	36	38	40	42	44	46	48	50	52
1 (154–160)	1.6	1.7	1.75	1.85	1.9	2	2.1	2.1	2.2	2.2
2 (162–168)	1.7	1.75	1.75	1.9	1.95	2.05	2.15	2.15	2.25	2.25
3 (170–176)	1.75	1.75	1.85	1.95	1.95	2.1	2.15	2.2	2.25	2.3
4 (178–184)	1.8	1.85	1.95	2	2	2.15	2.2	2.15	2.3	2.35

Main fabric, 55" wide, with a directional print/nap, in yards:

Height, ft	Size									
	34	36	38	40	42	44	46	48	50	52
1 (5'1"–5'3")	1 3/4	1 7/8	1 7/8	2	2 1/8	2 1/8	2 1/4	2 1/4	2 3/8	2 3/8
2 (5'4"–5'6")	1 7/8	1 7/8	1 7/8	2 1/8	2 1/8	2 1/4	2 3/8	2 3/8	2 1/2	2 1/2
3 (5'7"–5'9")	1 7/8	1 7/8	2	2 1/8	2 1/8	2 1/4	2 3/8	2 3/8	2 1/2	2 1/2
4 (5'10"–6'1")	2	2	2 1/8	2 1/8	2 1/8	2 3/8	2 3/8	2 3/8	2 1/2	2 5/8

**IMPORTANT!** When purchasing fabric, please account for shrinkage and buy 5% more than required.

2. Stitched bias-cut fusible stay tape with stitch reinforcement, 1.5 cm (5/8") wide, for all heights:

Size	34	36	38	40	42	44	46	48	50	52
Meters	2.4	2.5	2.6	2.7	2.8	2.9	3	3.1	3.2	3.3
Yards	2 5/8	2 3/4	2 7/8	3	3	3 1/8	3 1/4	3 3/8	3 1/2	3 5/8

3. Rigilene boning for the bodice side seams, 1 cm (3/8") wide, for all sizes in all heights — 20 cm (7 7/8")

4. One invisible zipper, 20 cm (7 7/8") long, for all sizes in all heights

5. Two strap slide adjusters, 8 mm (just under 3/8") wide

6. Two strap rings for the ring tabs, 8 mm (just under 3/8") in diameter

7. Elastic thread — 1 spool

8. Matching thread — 4 spools (1 spool for the sewing machine + 3 spools for the overlocker)

# TOOLS AND EQUIPMENT

---

- sewing machine for construction
- overlocker for finishing raw edges. This may be replaced with a stretch overlock stitch or a zigzag stitch on the sewing machine (overlock or zigzag stitch width 2–3 mm, stitch length 2.5 mm)
- dress form
- invisible zipper foot for the sewing machine
- one-sided foot for the sewing machine to attach the zipper
- loop turner

## PATTERN PIECES LIST

---

### From main fabric:

- front skirt — cut 1
- back skirt — cut 2
- front skirt facing — cut 1
- back skirt facing — cut 2
- front bodice — cut 4
- side back bodice — cut 4
- center back bodice — cut 1
- tie — cut 1
- strap + ring tab — cut 2

***IMPORTANT!** Don't forget to transfer all pattern markings and notches onto the fabric.*

## SEAM ALLOWANCES

---

All pattern pieces include seam allowances as follows:

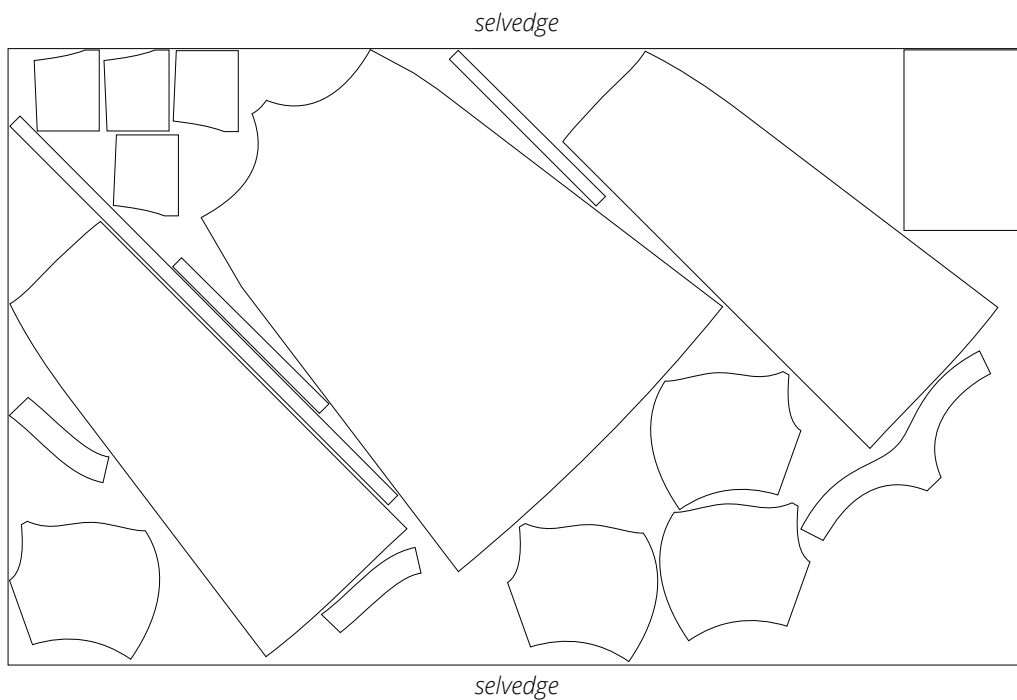
- garment hem allowance — 2 cm (3/4")
- all other edges — 1 cm (3/8")

Take this into account when laying out pattern pieces on the fabric.

# CUTTING LAYOUT

---

Main fabric, 140 cm (55") wide, with a directional print/nap,  
cut on a single layer, for all sizes in all heights



**READY? LET'S GET SEWING!**

---





Press the center and side seams on the bodice lining flat. Press the seam allowances open.



Measure 1.5 cm (5/8") from the top and bottom edges of each side seam and make chalk marks on the wrong side of the bodice.

Press the rigilene boning with steam to prevent distortion.

Cut the boning to be as long as the side seams between the markings.

**Important!** Smooth out the sharp tips of the boning by melting them. Otherwise, they can distort the garment and damage the skin.



Place the boning between the markings, centering it over the side seam. Machine-stitch close to the side seam, along the center of the boning. Leave 1.5 cm (5/8") at the top and bottom free of boning. Backstitch at the beginning and end of the seam.