

# FROM THE FOUNDER OF THE #VIKISEWS BRAND

---



Back in 2016, when I was working on my first set of sewing instructions, I was trying to write them in such a way that even a complete beginner could easily understand and use them to create their very first garment. These instructions laid the foundation for the Vikisews brand, its vision and its mission. I wanted to create modern patterns with the utmost detailed and clear instructions.

Now, with each new collection we are constantly improving our instructions, amending them and adding more relevant details. By the time the final product reaches you, our drafters, correctors, and editors would have spent weeks perfecting every word and every photograph. If you compile a few of our instructions together, you will get a sewing manual that will assist you in sewing all kinds of garments at any difficulty level.

And I would be very happy if these instructions helped you to turn your hobby into a lifelong passion... Enjoy the process! Create your ultimate dream wardrobe! Wear your garments proudly for years to come!

If you have any questions, please contact us at [info@vikisews.com](mailto:info@vikisews.com) — we are always there to help.



## RAMONA PATTERN DESCRIPTION

---

Ramona is a pair of close-fitting flared pants. They feature a grown-on elasticated waistband. Ramona is floor-length.



## IMPORTANT!

---

The contents of this pattern are copyright protected and belong exclusively to Vikisews. You may use Vikisews patterns for personal use. It is prohibited to share Vikisews patterns and instructions with third parties, as well as to publish patterns and instructions online for public access. **Non-compliance with the mentioned rules is a violation of the US copyright law and may result in civil liability and criminal prosecution.**

You may use Vikisews patterns for commercial use, to sew custom-made garments and/or create fashion collections, on the condition that the patterns are solely used in a manufacturing setting and are not further shared with individuals.

# TOTAL EASE ALLOWANCE

	Waistline ease at waistband top edge (estimated)	Hipline ease
cm	-2 – (-2.5)	-16 – (-16.7)
inches	-3/4 – (-1)	-6 1/4 – (-6 5/8)

# GARMENT LENGTH

Height, cm	Side seam length, cm	Height, ft	Side seam length, in
1 (154–160)	105.1–107.1	1 (5'1"–5'3")	41 3/8–42 1/8
2 (162–168)	109.4–111.4	2 (5'4"–5'6")	43 1/8–43 7/8
3 (170–176)	113.8–115.7	3 (5'7"–5'9")	44 3/4–45 1/2
4 (178–184)	118.1–120	4 (5'10"–6'1")	46 1/2–47 1/4

# FINISHED HEM WIDTH FOR ALL HEIGHTS

Size	34	36	38	40	42	44	46	48	50	52
cm	34.8	35.2	35.7	36.2	36.7	37.2	37.7	38.2	38.7	39.2
inches	13 3/4	13 7/8	14	14 1/4	14 1/2	14 5/8	14 7/8	15	15 1/4	15 3/8

# SUGGESTED FABRIC

To sew these pants, choose knit fabrics with the following properties:

- soft, breathable, medium-stretch (stretch factor 1.3–1.5), medium-weight
- the fiber content should include elastane or spandex and can also include natural fibers, artificial fibers, blends, and synthetics.

Recommended fabrics: knits, rib knits, soft double knits.

**Attention!** We recommend using only stretchy fabrics for these pants.

You can determine the stretch factor of the fabric yourself. Mark 10 cm (4") along the crosswise grain of the fabric, lay a ruler next to the marked section, and stretch the fabric. Divide the measurement you get by 10.

The pants in the photo are made of soft double knits. The fabric is medium weight, soft, and stretchy. The fiber content is 85% viscose, 11% nylon, and 4% elastane. The fabric weight is 150 g/m<sup>2</sup>.

# FABRIC AND NOTIONS REQUIREMENTS

1. Main fabric, 140 cm wide, with a directional print/nap, in meters:

Height, cm	Size							
	34	36	38	40-42	44	46	48-50	52
1 (154-160)	1.45	1.55	1.65	2	2.05	2.15	2.3	2.3
2 (162-168)	1.5	1.6	1.7	2.1	2.15	2.3	2.4	2.4
3 (170-176)	1.6	1.65	1.75	2.2	2.25	2.4	2.5	2.5
4 (178-184)	1.65	1.75	1.85	2.25	2.3	2.5	2.55	2.6

Main fabric, 140 cm wide, with a non-directional print/no nap, in meters:

Height, cm	Size				
	34-38	40	42	44	46-52
1 (154-160)	1.15	1.2	1.3	1.95	2
2 (162-168)	1.2	1.25	1.35	2	2.1
3 (170-176)	1.25	1.3	1.4	2.1	2.2
4 (178-184)	1.3	1.35	1.45	2.2	2.25

Main fabric, 55" wide, with a directional print/nap, in yards:

Height, ft	Size							
	34	36	38	40-42	44	46	48-50	52
1 (5'1"-5'3")	1 5/8	1 3/4	1 3/4	2 1/8	2 1/4	2 3/8	2 1/2	2 1/2
2 (5'4"-5'6")	1 5/8	1 3/4	1 7/8	2 1/4	2 3/8	2 1/2	2 5/8	2 5/8
3 (5'7"-5'9")	1 3/4	1 3/4	1 7/8	2 3/8	2 1/2	2 5/8	2 3/4	2 3/4
4 (5'10"-6'1")	1 3/4	1 7/8	2	2 1/2	2 1/2	2 3/4	2 3/4	2 7/8

Main fabric, 55" wide, with a non-directional print/no nap, in yards:

Height, ft	Size				
	34–38	40	42	44	46–52
1 (5'1"–5'3")	1 1/4	1 1/4	1 3/8	2 1/8	2 1/8
2 (5'4"–5'6")	1 1/4	1 3/8	1 1/2	2 1/8	2 1/4
3 (5'7"–5'9")	1 3/8	1 3/8	1 1/2	2 1/4	2 3/8
4 (5'10"–6'1")	1 3/8	1 1/2	1 5/8	2 3/8	2 1/2

**IMPORTANT!** When purchasing fabric, please account for shrinkage and buy 5% more than required.

2. Elastic, 4 cm (1 5/8") wide, for all heights (including seam allowances):

Size	34	36	38	40	42	44	46	48	50	52
cm	59	62.8	66.6	70.4	74.2	78	81.8	85.6	89.4	93.2
inches	23 1/4	24 3/4	26 1/4	27 3/4	29 1/4	30 3/4	32 1/4	33 3/4	35 1/4	36 3/4

3. Matching thread — 5 spools (1 spool for the sewing machine + 4 spools for the overlocker)

## TOOLS AND EQUIPMENT

- sewing machine for construction
- overlocker for construction and finishing raw edges. This may be replaced with a stretch overlock stitch or a zigzag stitch on the sewing machine (overlock or zigzag stitch width 2–3 mm, stitch length 2.5 mm)
- coverstitch or coverlock machine for finishing the garment hem. If you don't have a coverstitch machine, it can be replaced with a twin needle on any regular sewing machine that can do a zigzag stitch.

**IMPORTANT!** We recommend using specialty needles when working with knit fabrics (for example, *STRETCH*, *SUPER STRETCH*, *JERSEY*, etc.). When sewing, a ball-shaped needle point pushes the knit loops apart without piercing the threads.

# PATTERN PIECES LIST

---

From main fabric:

- front leg — cut 2
- back leg — cut 2

***IMPORTANT!** Don't forget to transfer all pattern markings and notches onto the fabric.*

# SEAM ALLOWANCES

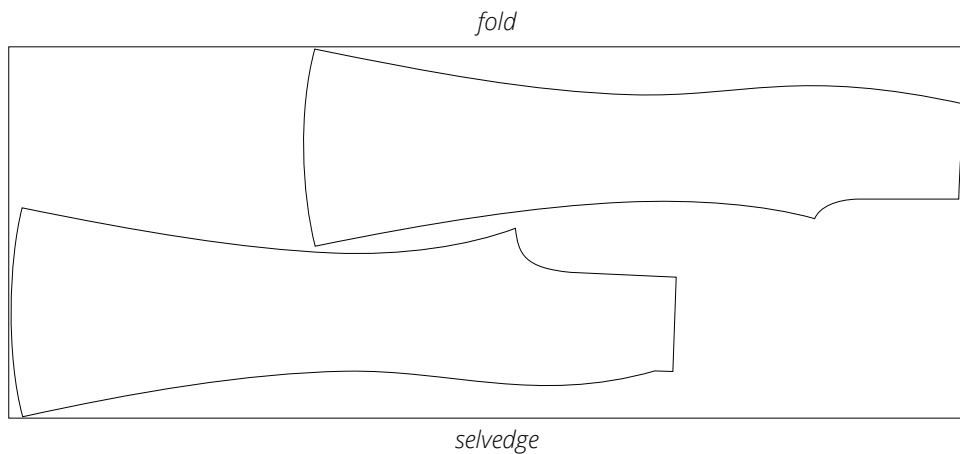
---

All pattern pieces include 1 cm (3/8") seam allowances.  
Take this into account when laying out pattern pieces on the fabric.

# CUTTING LAYOUT

---

Main fabric, 140 cm (55") wide, with a directional print/nap, cut on fold,  
for sizes 34–38 in all heights







Turn one leg piece right side out and insert it into the other leg piece, right sides together.

Align the crotch edges, match the notches and inseams, and pin.

Fold the inseam allowances to the opposite sides at the seam intersection to reduce the bulk.



Stitch the crotch seam on the overlocker, with the right leg facing up.

Press the seam flat.



Press the upper part of the crotch seam allowance towards the left leg. Leave the lower part of the crotch seam allowance pressed flat.