

FROM THE FOUNDER OF THE #VIKISEWS BRAND

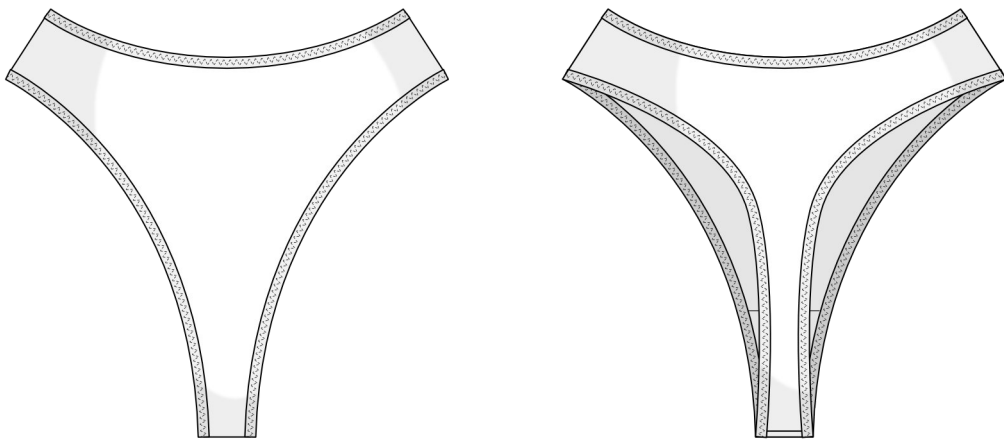


Back in 2016, when I was working on my first set of sewing instructions, I was trying to write them in such a way that even a complete beginner could easily understand and use them to create their very first garment. These instructions laid the foundation for the Vikisews brand, its vision and its mission. I wanted to create modern patterns with the utmost detailed and clear instructions.

Now, with each new collection we are constantly improving our instructions, amending them and adding more relevant details. By the time the final product reaches you, our drafters, correctors, and editors would have spent weeks perfecting every word and every photograph. If you compile a few of our instructions together, you will get a sewing manual that will assist you in sewing all kinds of garments at any difficulty level.

And I would be very happy if these instructions helped you to turn your hobby into a lifelong passion... Enjoy the process! Create your ultimate dream wardrobe! Wear your garments proudly for years to come!

If you have any questions, please contact us at info@vikisews.com — we are always there to help.



YASU PATTERN DESCRIPTION

Yasu is a high-rise thong with side seams. The gusset is lined with the main fabric. The edges are finished with fold-over elastic.



IMPORTANT!

The contents of this pattern are copyright protected and belong exclusively to Vikisews. You may use Vikisews patterns for personal use. It is prohibited to share Vikisews patterns and instructions with third parties, as well as to publish patterns and instructions online for public access. **Non-compliance with the mentioned rules is a violation of the US copyright law and may result in civil liability and criminal prosecution.**

You may use Vikisews patterns for commercial use, to sew custom-made garments and/or create fashion collections, on the condition that the patterns are solely used in a manufacturing setting and are not further shared with individuals.

SUGGESTED FABRIC

To sew this thong, choose knit fabrics with the following properties:

- soft, stretchy (1.2–1.5 stretch factor), medium weight
- the following fabrics are recommended: jersey

You can determine the stretch factor of the fabric yourself. Mark 10 cm (4") along the crosswise grain of the fabric, lay a ruler next to the marked section, and stretch the fabric. Divide the measurement you get by 10.

The thong in the photo is made of jersey. The fabric is medium weight, soft, and stretchy. The fiber content is 92% cotton and 8% spandex. The fabric weight is 180 g/m².

FABRIC AND NOTIONS REQUIREMENTS

1. Main fabric, 180 cm wide, with a directional print/nap, in meters:

Height, cm	Size			
	34–38	40–42	44–50	52
1 (154–160) – 2 (162–168)	0.35	0.35	0.4	0.4
3 (170–176) – 4 (178–184)	0.35	0.4	0.4	0.45

Main fabric, 71" wide, with a directional print/nap, in yards:

Height, ft	Size	
	34–50	52
1 (5'1"–5'3") – 2 (5'4"–5'6")	3/8	3/8
3 (5'7"–5'9") – 4 (5'10"–6'1")	3/8	1/2

2. Fold-over elastic, 1.5 cm wide, in centimeters:

Height, cm	Size									
	34	36	38	40	42	44	46	48	50	52
1 (154–160) – 2 (162–168)	178	186.5	195	204	212.5	221	229.5	239	247.5	256.5
3 (170–176) – 4 (178–184)	181	189.5	198	206.5	215	224	232.5	241.5	250.5	259

Fold-over elastic, 5/8" wide, in inches:

Height, ft	Size									
	34	36	38	40	42	44	46	48	50	52
1 (5'1"–5'3") – 2 (5'4"–5'6")	70 1/8	73 3/8	76 3/4	80 3/8	83 5/8	87	90 3/8	94 1/8	97 1/2	101
3 (5'7"–5'9") – 4 (5'10"–6'1")	71 1/4	74 5/8	78	81 1/4	84 5/8	88 1/4	91 1/2	95 1/8	98 5/8	102

IMPORTANT! When purchasing fabric and elastic, please account for shrinkage and buy 5% more than required.

3. Matching thread — 4 spools (1 spool for the sewing machine + 3 spools for the overlocker)

TOOLS AND EQUIPMENT

- sewing machine for construction
- overlocker for construction and finishing raw edges. This may be replaced with a stretch overlock stitch or a zigzag stitch on the sewing machine (overlock or zigzag stitch width 2–3 mm, stitch length 2.5 mm)
- large-eye needle or latch hook

IMPORTANT! We recommend using specialty needles when working with knit fabrics and elastic (for example, *STRETCH*, *SUPER STRETCH*, *JERSEY*, etc.). When sewing, a ball-shaped needle point pushes the knit loops apart without piercing the threads.

PATTERN PIECES LIST

From main fabric:

- front — cut 1 on fold
- back — cut 1 on fold
- gusset — cut 1

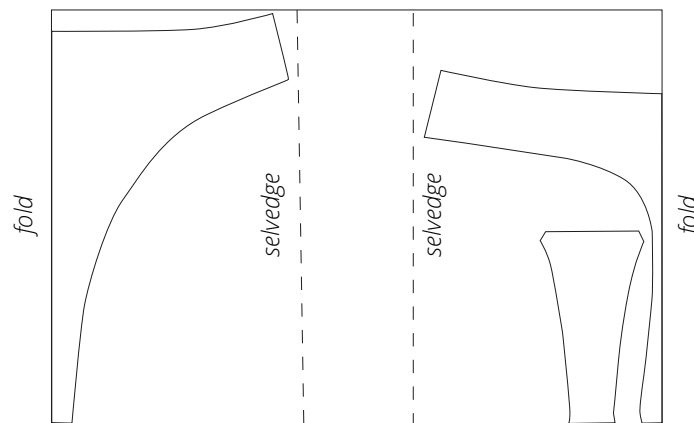
IMPORTANT! Don't forget to transfer all pattern markings and notches onto the fabric.

SEAM ALLOWANCES

All pattern pieces include 1 cm (3/8") seam allowances.
Take this into account when laying out pattern pieces on the fabric.

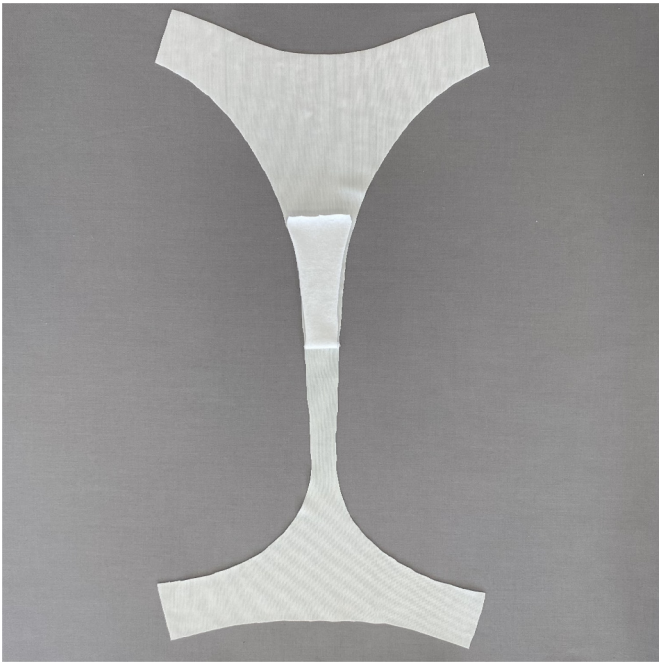
CUTTING LAYOUT

Main fabric, 180 cm (71") wide, with a directional print/nap,
cut with two folds, for all sizes in all heights



Attention! Cut one gusset piece only.

READY? LET'S GET SEWING!



Lay the garment out on a flat surface and turn the gusset over the front piece. Hand-baste the gusset in place.



Place the front and back pieces right sides together. Align the side edges and pin.



Stitch on the overlocker, with the back piece facing up. Press the seams flat.