

FROM THE FOUNDER OF THE #VIKISEWS BRAND



Back in 2016, when I was working on my first set of sewing instructions, I was trying to write them in such a way that even a complete beginner could easily understand and use them to create their very first garment. These instructions laid the foundation for the Vikisews brand, its vision and its mission. I wanted to create modern patterns with the utmost detailed and clear instructions.

Now, with each new collection we are constantly improving our instructions, amending them and adding more relevant details. By the time the final product reaches you, our drafters, correctors, and editors would have spent weeks perfecting every word and every photograph. If you compile a few of our instructions together, you will get a sewing manual that will assist you in sewing all kinds of garments at any difficulty level.

And I would be very happy if these instructions helped you to turn your hobby into a lifelong passion... Enjoy the process! Create your ultimate dream wardrobe! Wear your garments proudly for years to come!

If you have any questions, please contact us at info@vikisews.com — we are always there to help.



VIERA PATTERN DESCRIPTION

Viera is a close-fitting top with a seamless yoke on each shoulder attached to the front and back. It has a round neckline with raw-edge binding. The set-in sleeves are long and close-fitting. The sleeves and yokes are stitched with exposed seams. Viera is hip-length.



IMPORTANT!

The contents of this pattern are copyright protected and belong exclusively to Vikisews. You may use Vikisews patterns for personal use. It is prohibited to share Vikisews patterns and instructions with third parties, as well as to publish patterns and instructions online for public access. **Non-compliance with the mentioned rules is a violation of the US copyright law and may result in civil liability and criminal prosecution.**

You may use Vikisews patterns for commercial use, to sew custom-made garments and/or create fashion collections, on the condition that the patterns are solely used in a manufacturing setting and are not further shared with individuals.

TOTAL EASE ALLOWANCE

	Bust ease	Waistline ease	Hipline ease	Upper arm ease
cm	-10.7 – (-10.8)	1.8–1.9	-9.1 – (-11.1)	-2.5 – (-2.7)
inches	-4 1/4	3/4	-3 5/8 – (-4 3/8)	-1 – (-1 1/8)

GARMENT LENGTH, SLEEVE LENGTH

Height, cm	Back length including neckline binding, cm	Sleeve length, cm
1 (154–160)	55.1–55.3	66
2 (162–168)	58.1	68
3 (170–176)	61.1	70
4 (178–184)	64.1	72
Height, ft	Back length including neckline binding, in	Sleeve length, in
1 (5'1"–5'3")	21 3/4	26
2 (5'4"–5'6")	22 7/8	26 3/4
3 (5'7"–5'9")	24	27 1/2
4 (5'10"–6'1")	25 1/4	28 3/8

SUGGESTED FABRIC

To sew this long sleeve top, choose knit fabrics with the following properties:

- soft, breathable, medium-stretch (stretch factor 1.3–1.5), medium-weight
- the fiber content should include elastane or spandex and can also include natural fibers, artificial fibers, blends, and synthetics.

Recommended fabrics: knits, rib knits, microfiber.

Attention! We recommend using only stretchy fabrics for this long sleeve top.

You can determine the stretch factor of your fabric yourself. Mark 10 cm (4") along the crosswise grain of the fabric, lay a ruler next to the marked section, and stretch the fabric. Divide the measurement you get by 10.

The long sleeve top in the photo is made of thin knit fabric. The fabric is medium weight, soft, and stretchy. The fiber content is 95% polyester and 5% spandex. The fabric weight is 220 g/m².

FABRIC AND NOTIONS REQUIREMENTS

1. Main fabric, 140 cm wide, with a directional print/nap, in meters:

Height, cm	Size				
	34	36	38	40-42	44-52
1 (154-160)	0.75	0.85	1.05	1.25	1.3
2 (162-168)	0.75	0.9	1.15	1.3	1.35
3 (170-176)	0.8	0.9	1.2	1.35	1.4
4 (178-184)	0.8	0.9	1.25	1.4	1.45

Main fabric, 180 cm wide, with a directional print/nap, in meters:

Height, cm	Size			
	34-42	44-46	48	50-52
1 (154-160)	0.7	0.75	0.75	1.1
2 (162-168)	0.75	0.8	0.8	1.2
3 (170-176)	0.75	0.8	0.8	1.25
4 (178-184)	0.8	0.85	0.9	1.25

Main fabric, 55" wide, with a directional print/nap, in yards:

Height, ft	Size				
	34	36	38	40-42	44-52
1 (5'1"-5'3")	7/8	7/8	1 1/8	1 3/8	1 3/8
2 (5'4"-5'6")	7/8	1	1 1/4	1 3/8	1 1/2
3 (5'7"-5'9")	7/8	1	1 1/4	1 1/2	1 1/2
4 (5'10"-6'1")	7/8	1	1 3/8	1 1/2	1 5/8

Main fabric, 71" wide, with a directional print/nap, in yards:

Height, ft	Size			
	34-42	44-46	48	50-52
1 (5'1"-5'3")	3/4	7/8	7/8	1 1/4
2 (5'4"-5'6")	7/8	7/8	7/8	1 1/4
3 (5'7"-5'9")	7/8	7/8	7/8	1 3/8
4 (5'10"-6'1")	7/8	7/8	1	1 3/8

IMPORTANT! When purchasing fabric, please account for shrinkage and buy 5% more than required.

2. Matching thread — 5 spools (1 spool for the sewing machine + 4 spools for the overlocker)

TOOLS AND EQUIPMENT

- sewing machine for construction
- overlocker for construction and finishing raw edges. This may be replaced with a stretch overlock stitch or a zigzag stitch on the sewing machine (overlock or zigzag stitch width 2–3 mm, stitch length 2.5 mm)
- coverstitch or coverlock machine for finishing the bottom edges of the garment and sleeves. If you don't have a coverstitch machine, it can be replaced with a twin needle on any regular sewing machine that can do a zigzag stitch

IMPORTANT! We recommend using specialty needles when working with knit fabrics (for example, *STRETCH*, *SUPER STRETCH*, *JERSEY*, etc.). When sewing, a ball-shaped needle point pushes the knit loops apart without piercing the threads.

PATTERN PIECES LIST

From main fabric:

- front — cut 1 on fold
- back — cut 1 on fold
- sleeve — cut 2
- yoke — cut 2
- neckline binding — cut 1

IMPORTANT! Don't forget to transfer all pattern markings and notches onto the fabric.

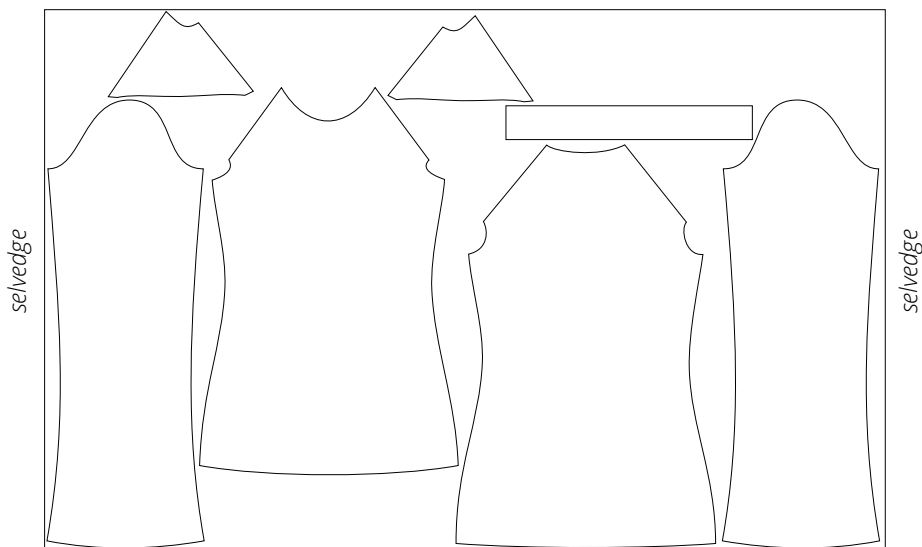
SEAM ALLOWANCES

All pattern pieces include 1 cm (3/8") seam allowances.

Take this into account when laying out pattern pieces on the fabric.

CUTTING LAYOUT

Main fabric, 140 cm (55") wide, with a directional print/nap, cut on a single layer, for sizes 34–36 in all heights; main fabric, 180 cm (71") wide, with a directional print/nap, cut on a single layer, for sizes 44–48 in all heights

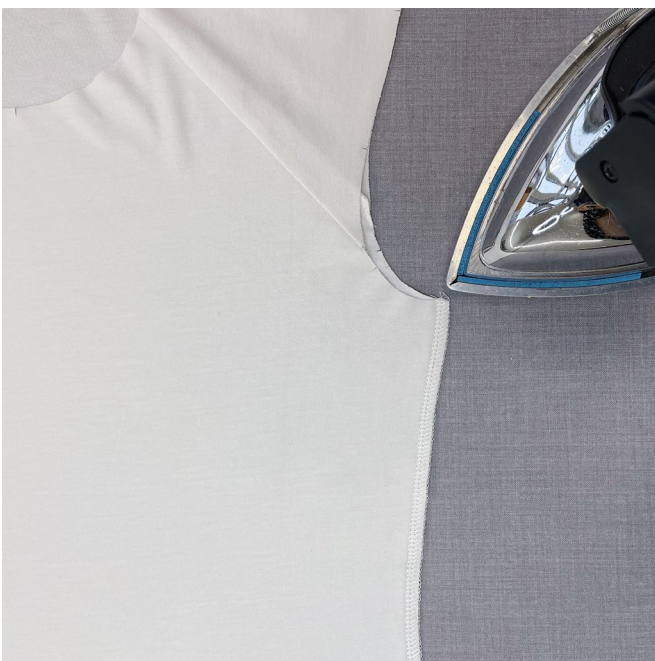




Press the seam allowances towards the yoke.



Place the front and back pieces right sides together and align the side edges. Match the notches and pin.



Stitch on the overlocker, with the front piece facing up.

Press the seam flat.