

# FROM THE FOUNDER OF THE #VIKISEWS BRAND

---



Back in 2016, when I was working on my first set of sewing instructions, I was trying to write them in such a way that even a complete beginner could easily understand and use them to create their very first garment. These instructions laid the foundation for the Vikisews brand, its vision and its mission. I wanted to create modern patterns with the utmost detailed and clear instructions.

Now, with each new collection we are constantly improving our instructions, amending them and adding more relevant details. By the time the final product reaches you, our drafters, correctors, and editors would have spent weeks perfecting every word and every photograph. If you compile a few of our instructions together, you will get a sewing manual that will assist you in sewing all kinds of garments at any difficulty level.

And I would be very happy if these instructions helped you to turn your hobby into a lifelong passion... Enjoy the process! Create your ultimate dream wardrobe! Wear your garments proudly for years to come!

If you have any questions, please contact us at [info@vikisews.com](mailto:info@vikisews.com) — we are always there to help.



## OENONE PATTERN DESCRIPTION

---

Oenone is a pair of mid-rise hipster briefs with front and back center seams. The gusset is lined with cotton jersey. The top edge of the briefs is finished with picot lingerie elastic.



## IMPORTANT!

---

The contents of this pattern are copyright protected and belong exclusively to Vikisews. You may use Vikisews patterns for personal use. It is prohibited to share Vikisews patterns and instructions with third parties, as well as to publish patterns and instructions online for public access. **Non-compliance with the mentioned rules is a violation of the US copyright law and may result in civil liability and criminal prosecution.**

You may use Vikisews patterns for commercial use, to sew custom-made garments and/or create fashion collections, on the condition that the patterns are solely used in a manufacturing setting and are not further shared with individuals.

# SUGGESTED FABRIC

To sew these hipster briefs, choose lace fabrics with the following properties:

- soft, stretchy (1.2–1.5 stretch factor), medium-weight
- the following fabrics are recommended: lace, allover lace fabrics, embroidered mesh, guipure lace.

The fabric should have a scalloped edge.

You can determine the stretch factor of the fabric yourself. Mark 10 cm (4") along the crosswise grain of the fabric, lay a ruler next to the marked section, and stretch the fabric. Divide the measurement you get by 10.

The hipster briefs in the photo are made of stretch lace. The fabric is medium weight, soft, and stretchy. The fiber content is 80% nylon and 20% spandex. The fabric weight is 90 g/m<sup>2</sup>.  
The additional material is 100% cotton (120 g/m<sup>2</sup>).

# FABRIC AND NOTIONS REQUIREMENTS

1. Main fabric, 34 cm (13") wide, with a directional print/nap, without accounting for pattern repeat, for all heights:

| Size   | 34–36 | 38    | 40    | 42–44 | 46    | 48    | 50    | 52    |
|--------|-------|-------|-------|-------|-------|-------|-------|-------|
| meters | 0.95  | 1     | 1.05  | 1.1   | 1.15  | 1.2   | 1.25  | 1.3   |
| yards  | 1     | 1 1/8 | 1 1/8 | 1 1/4 | 1 1/4 | 1 1/4 | 1 3/8 | 1 3/8 |

2. Additional fabric, 140 cm (55") wide, for all heights:

| Size   | 34–50 | 52   |
|--------|-------|------|
| meters | 0.2   | 0.25 |
| yards  | 1/4   | 1/4  |

3. Picot lingerie elastic, 7 mm wide, in centimeters:

| Height, cm                   | Size |      |      |      |      |      |    |      |      |      |
|------------------------------|------|------|------|------|------|------|----|------|------|------|
|                              | 34   | 36   | 38   | 40   | 42   | 44   | 46 | 48   | 50   | 52   |
| 1 (154–160) –<br>2 (162–168) | 60.5 | 64   | 67   | 70   | 73.5 | 76.5 | 80 | 83   | 86   | 89.5 |
| 3 (170–176)–<br>4 (178–184)  | 60   | 63.5 | 66.5 | 69.5 | 73   | 76   | 79 | 82.4 | 85.5 | 89   |

Picot lingerie elastic, 1/4" wide, in inches:

| Height, ft                        | Size   |        |        |        |        |        |        |        |        |        |
|-----------------------------------|--------|--------|--------|--------|--------|--------|--------|--------|--------|--------|
|                                   | 34     | 36     | 38     | 40     | 42     | 44     | 46     | 48     | 50     | 52     |
| 1 (5'1"–5'3") –<br>2 (5'4"–5'6")  | 23 7/8 | 25 1/4 | 26 3/8 | 27 1/2 | 28 7/8 | 30 1/8 | 31 1/2 | 32 5/8 | 33 7/8 | 35 1/4 |
| 3 (5'7"–5'9") –<br>4 (5'10"–6'1") | 23 5/8 | 25     | 26 1/8 | 27 3/8 | 28 3/4 | 29 7/8 | 31 1/8 | 32 1/2 | 33 5/8 | 35     |

**IMPORTANT!** When purchasing fabric and elastic, please account for shrinkage and buy 5% more than required.

4. Matching thread — 4 spools (1 spool for the sewing machine + 3 spools for the overlocker)

## TOOLS AND EQUIPMENT

- sewing machine for construction
- overlocker for construction and finishing raw edges. It can be replaced with a stretch overlock stitch or a zigzag stitch on the sewing machine (overlock or zigzag stitch width 2–3 mm, stitch length 2.5 mm)
- latch hook or a large-eye needle

**IMPORTANT!** We recommend using specialty needles when working with knit fabrics and elastic (for example, STRETCH, SUPER STRETCH, JERSEY, etc.). When sewing, a ball-shaped needle point pushes the knit loops apart without piercing the threads.

# PATTERN PIECES LIST

---

## 1. From main fabric:

- leg — cut 2
- gusset — cut 1

## 2. From additional fabric:

- gusset — cut 1

***IMPORTANT!** Don't forget to transfer all pattern markings and notches onto the fabric.*

# SEAM ALLOWANCES

---

All pattern pieces include seam allowances as follows:

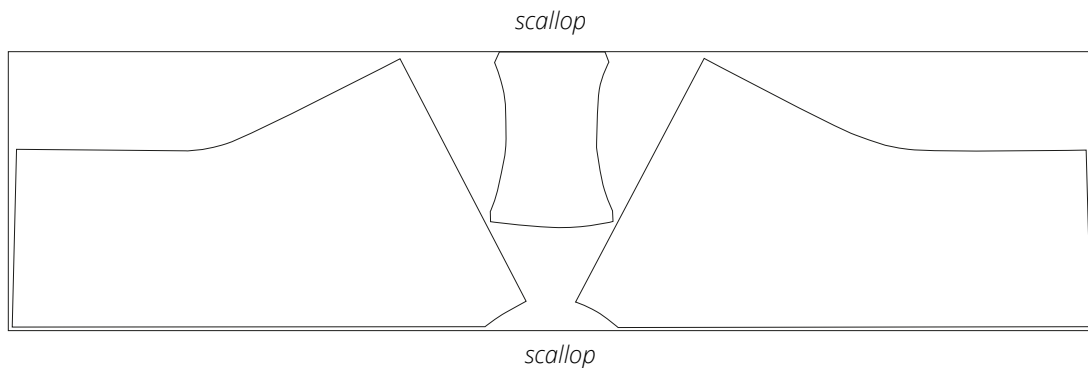
- all edges — 1 cm (3/8").

Take this into account when laying out pattern pieces on the fabric.

# CUTTING LAYOUT

---

Main fabric, 34 cm (13") wide, with a directional print/nap,  
cut on a single layer, for all sizes in all heights



Additional fabric, 140 cm (55") wide, cut on a single layer,  
for all sizes in all heights



# READY? LET'S GET SEWING!

---





Turn the gusset to the right side, smooth out the corners, and press.



Using tailor's chalk, mark the seam allowance at 1 cm (3/8") from the gusset's raw edge.



With the jersey side facing up, overlock the raw edge of the gusset, trimming the seam allowances down to 5 mm (just under 1/4").

Leave long thread tails, tie them into a knot, and then hide them between the fabric layers using a latch hook or a large-eye needle.