

FROM THE FOUNDER OF THE #VIKISEWS BRAND



Back in 2016, when I was working on my first set of sewing instructions, I was trying to write them in such a way that even a complete beginner could easily understand and use them to create their very first garment. These instructions laid the foundation for the Vikisews brand, its vision and its mission. I wanted to create modern patterns with the utmost detailed and clear instructions.

Now, with each new collection we are constantly improving our instructions, amending them and adding more relevant details. By the time the final product reaches you, our drafters, correctors, and editors would have spent weeks perfecting every word and every photograph. If you compile a few of our instructions together, you will get a sewing manual that will assist you in sewing all kinds of garments at any difficulty level.

And I would be very happy if these instructions helped you to turn your hobby into a lifelong passion... Enjoy the process! Create your ultimate dream wardrobe! Wear your garments proudly for years to come!

If you have any questions, please contact us at info@vikisews.com — we are always there to help.



RADA PATTERN DESCRIPTION

Rada is a close-fitting dress shaped with front and back princess seams. The dress features a decorative off-center button and buttonhole closure on the front and an invisible zipper closure in the center back seam. The front neckline is low and features decorative inserts made of additional fabric. The two-piece set-in sleeves are long and close-fitting. They feature elbow seam vents with sew-on buttons. The dress is fully lined. Rada is above-knee length.



IMPORTANT!

The contents of this pattern are copyright protected and belong exclusively to Vikisews. You may use Vikisews patterns for personal use. It is prohibited to share Vikisews patterns and instructions with third parties, as well as to publish patterns and instructions online for public access. **Non-compliance with the mentioned rules is a violation of the US copyright law and may result in civil liability and criminal prosecution.**

You may use Vikisews patterns for commercial use, to sew custom-made garments and/or create fashion collections, on the condition that the patterns are solely used in a manufacturing setting and are not further shared with individuals.

TOTAL EASE ALLOWANCE

	Bust ease	Waistline ease	Hipline ease	Upper arm ease
cm	5–4	1.6–1.7	3.6–7.2	3.7–3.6
inches	2–1 5/8	5/8	1 3/8–2 7/8	1 1/2–1 3/8

GARMENT LENGTH, SLEEVE LENGTH

Height, cm	Back length, cm	Sleeve length, cm
1 (154–160)	75.8–80.3	60.1–60.7
2 (162–168)	79.8–84.2	62.1–62.6
3 (170–176)	83.8–88.2	64.1–64.6
4 (178–184)	87.7–92.2	66.1–66.6

Height, ft	Back length, in	Sleeve length, in
1 (5'1"–5'3")	29 7/8–31 5/8	23 5/8–23 7/8
2 (5'4"–5'6")	31 3/8–33 1/8	24 1/2–24 5/8
3 (5'7"–5'9")	33–34 3/4	25 1/4–25 3/8
4 (5'10"–6'1")	34 1/2–36 1/4	26–26 1/4

SUGGESTED FABRIC

To sew this dress, choose dress-weight and suiting fabrics with the following properties:

- medium weight, structured, stretchy, opaque
- the fiber content can include natural fibers (wool), artificial fibers (viscose), blends (wool + viscose), and synthetics (polyester, polyester + elastane)

The following fabrics are recommended: dress-weight wool, tweed, crepe suiting, bouclé fabric.

Attention! We do not recommend very stretchy, thin, soft, fluid, loosely woven fabrics (knits).

For the bust insert, choose dress-weight fabrics with the following properties: light to medium weight, low-stretch or non-stretch. The fiber content can include natural fibers, artificial fibers, blends, or synthetics.

The following fabrics are recommended: satin, dress-weight crepe, natural or artificial silk.

For the lining, choose lining fabrics made of artificial fibers (viscose), blends (viscose + elastane, viscose + polyester), or synthetics (polyester, polyester + elastane).

The garment in the photo is made of crepe suiting. The fabric is medium weight, soft, and low-stretch. The fiber content is 63% viscose, 32% polyester, and 5% elastane. The fabric weight is 360 g/m².

The lining is 96% viscose and 4% elastane. The fabric weight is 90 g/m².

The bust insert is made of thin satin. The fiber content is 98% polyester and 2% elastane. The fabric weight is 190 g/m².

FABRIC AND NOTIONS REQUIREMENTS

1. Main fabric, 140 cm wide, 250–360 g/m², with a directional print/nap, in meters:

Height, cm	Size					
	34–36	38–40	42–44	46	48–50	52
1 (154–160)	1.55	1.6	1.95	2.05	2.1	2.15
2 (162–168)	1.6	1.65	2.05	2.15	2.2	2.25
3 (170–176)	1.75	1.75	2.15	2.25	2.3	2.35
4 (178–184)	1.75	1.8	2.2	2.35	2.4	2.5

Main fabric, 55" wide, 250–360 g/m², with a directional print/nap, in yards:

Height, ft	Size				
	34–36	38–40	42–44	46–50	52
1 (5'1"–5'3")	1 3/4	1 3/4	2 1/8	2 1/4	2 3/8
2 (5'4"–5'6")	1 3/4	1 3/4	2 1/4	2 3/8	2 1/2
3 (5'7"–5'9")	1 7/8	1 7/8	2 3/8	2 1/2	2 5/8
4 (5'10"–6'1")	1 7/8	2	2 3/8	2 5/8	2 3/4

2. Additional fabric, 140 cm wide, 150–190 g/m², with a directional print/nap, in meters:

Height, cm	Size			
	34–36	38–42	44–48	50–52
1 (154–160)	0.25	0.3	0.35	0.35
2 (162–168)	0.25	0.3	0.35	0.35
3 (170–176)	0.25	0.3	0.35	0.35
4 (178–184)	0.3	0.3	0.35	0.4

Additional fabric, 55" wide, 150–190 g/m², with a directional print/nap, in yards:

Height, ft	Size	
	34–36	38–52
1 (5'1"–5'3")	1/4	3/8
2 (5'4"–5'6")	1/4	3/8
3 (5'7"–5'9")	1/4	3/8
4 (5'10"–6'1")	3/8	3/8

3. Lining fabric, 140 cm wide, 90 g/m², with a directional print, in meters:

Height, cm	Size			
	34–42	44	46	48–52
1 (154–160)	1.2	1.35	1.35	1.45
2 (162–168)	1.25	1.4	1.4	1.5
3 (170–176)	1.3	1.5	1.5	1.55
4 (178–184)	1.35	1.55	1.6	1.6

Lining fabric, 55" wide, 90 g/m², with a directional print, in yards:

Height, ft	Size		
	34–42	44–46	48–52
1 (5'1"–5'3")	1 1/4	1 1/2	1 5/8
2 (5'4"–5'6")	1 3/8	1 1/2	1 5/8
3 (5'7"–5'9")	1 3/8	1 5/8	1 3/4
4 (5'10"–6'1")	1 1/2	1 3/4	1 3/4

IMPORTANT! When purchasing fabric, please account for shrinkage and buy 5% more than required.

4. Knit or woven lightweight interfacing, 140 cm wide, 40 g/m², in meters:

Height, cm	Size	
	34-42	44-52
1 (154-160)	0.85	0.9
2 (162-168)	0.9	0.95
3 (170-176)	0.95	1
4 (178-184)	0.95	1

Knit or woven lightweight interfacing, 55" wide, 40 g/m², in yards:

Height, ft	Size	
	34-42	44-52
1 (5'1"-5'3")	7/8	1
2 (5'4"-5'6")	1	1
3 (5'7"-5'9")	1	1 1/8
4 (5'10"-6'1")	1	1 1/8

5. Stitched bias-cut fusible stay tape — 4.22-5.11 m (4 5/8-5 5/8 yd)

6. One invisible zipper, 60-65 cm (23 5/8-25 5/8") long, for all sizes in all heights

7. Five buttons, 2.5-3 cm (1-1 1/8") in diameter

8. Ten buttons, 1.2-1.5 cm (1/2-5/8") in diameter

9. Matching thread for the main fabric — 1 spool

10. Matching thread for the lining fabric — 1 spool

11. Matching thread for the additional fabric — 1 spool

TOOLS AND EQUIPMENT

- sewing machine for construction
- buttonhole foot for the sewing machine
- stitch-in-the-ditch foot for the sewing machine (optional)
- invisible zipper foot for the sewing machine
- one-sided foot for the sewing machine

PATTERN PIECES LIST

1. From main fabric:

- center front — cut 2
- side front — cut 2
- center back — cut 2
- side back — cut 2
- top sleeve — cut 2
- bottom sleeve — cut 2
- front facing — cut 2

2. From additional fabric:

- bust insert — cut 2
- bottom bust insert — cut 2

3. From lining fabric:

- center front lining — cut 2
- side front lining — cut 2
- center back lining — cut 2
- side back lining — cut 2
- top sleeve lining — cut 2
- bottom sleeve lining — cut 2

***IMPORTANT!** Don't forget to transfer all pattern markings and notches onto the fabric.*

4. From interfacing:

- front facing — cut 2
- bottom bust insert — cut 2

According to the pattern markings, interface the hem allowances and vent extensions on the following pieces:

- center front — 2 pieces
- side front — 2 pieces
- center back — 2 pieces
- side back — 2 pieces
- top sleeve — 2 pieces
- bottom sleeve — 2 pieces

SEAM ALLOWANCES

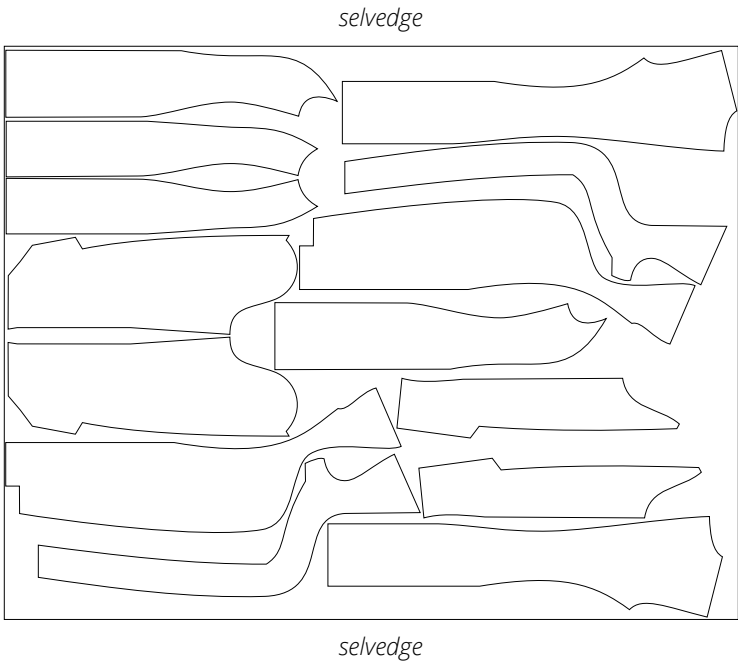
All pattern pieces include seam allowances as follows:

- garment hem allowance — 4 cm (1 5/8")
- sleeve hem allowance — 4 cm (1 5/8")
- center seam allowance on the center back — 1.5 cm (5/8")
- all other edges — 1 cm (3/8")

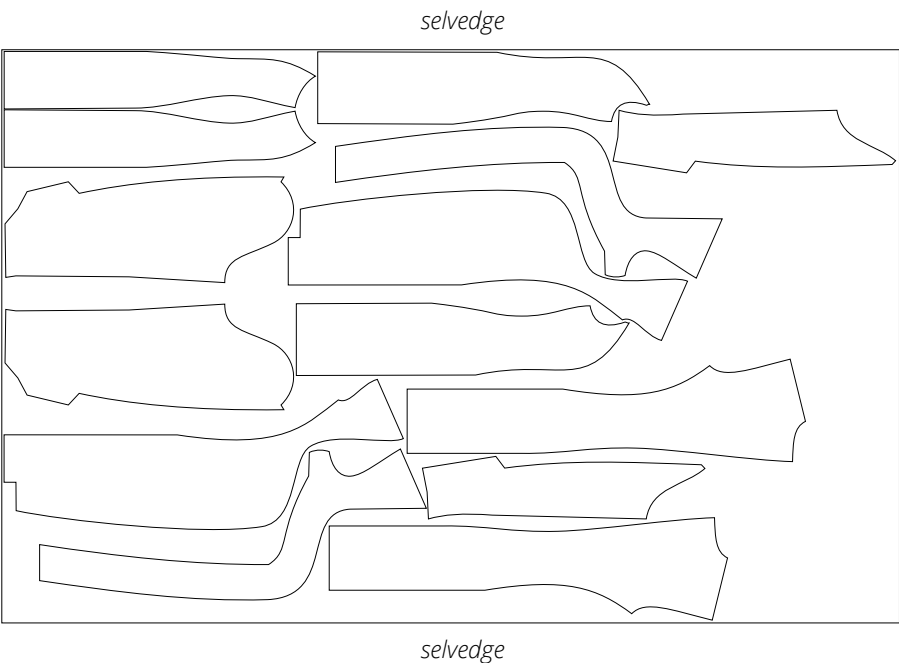
Take this into account when laying out pattern pieces on the fabric.

CUTTING LAYOUT

Main fabric, 140 cm (55") wide, with a directional print/nap, cut on a single layer, for sizes 34–40 in all heights



Main fabric, 140 cm (55") wide, with a directional print/nap, cut on a single layer, for sizes 42–44 in all heights





Place the assembled front and back pieces right sides together. Align the side edges and match the notches. Pin and machine-stitch. Backstitch at the beginning and end of the seam.



Press the side seam allowances open.



Place the assembled front and back pieces right sides together. Align the shoulder edges and match the notches. Pin.

Machine-stitch, backstitching at the beginning and end of the seam.