

FROM THE FOUNDER OF THE #VIKISEWS BRAND

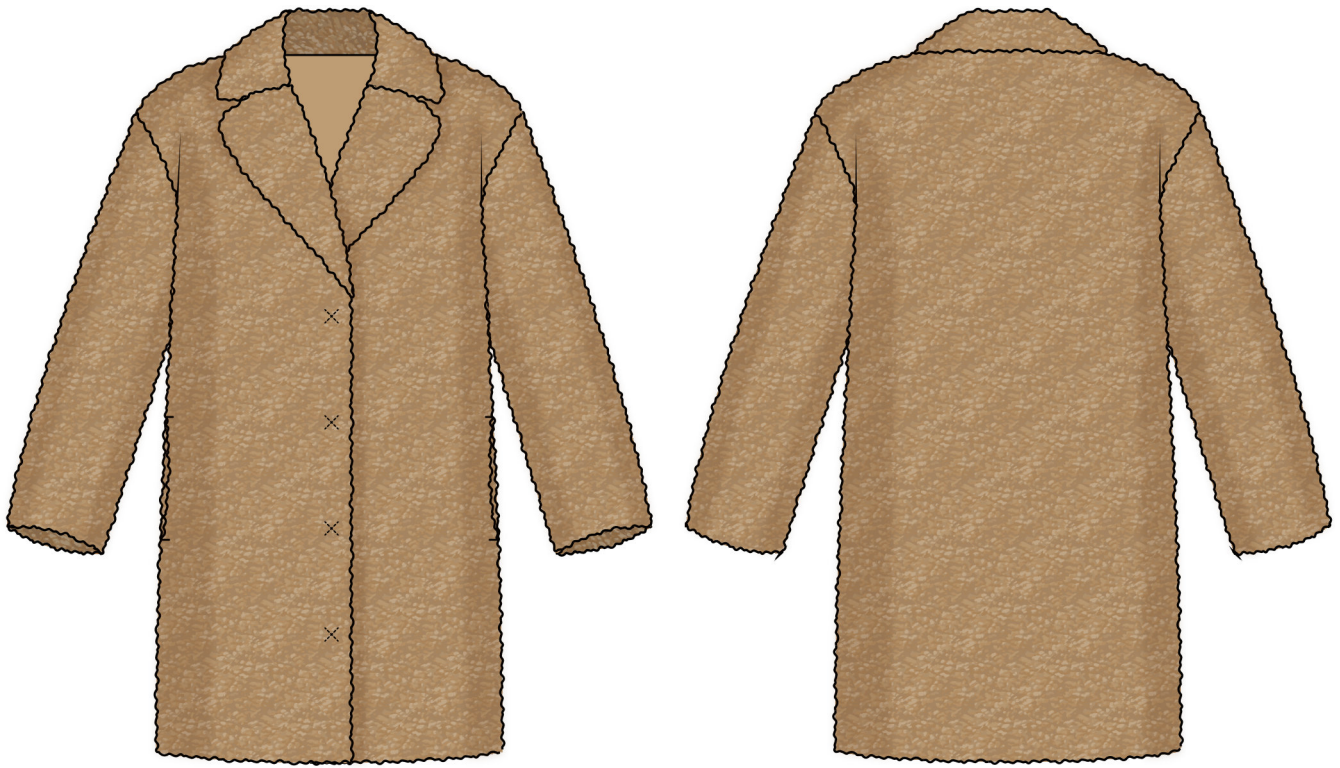


Back in 2016, when I was working on my first set of sewing instructions, I was trying to write them in such a way that even a complete beginner could easily understand and use them to create their very first garment. These instructions laid the foundation for the Vikisews brand, its vision and its mission. I wanted to create modern patterns with the utmost detailed and clear instructions.

Now, with each new collection we are constantly improving our instructions, amending them and adding more relevant details. By the time the final product reaches you, our drafters, correctors, and editors would have spent weeks perfecting every word and every photograph. If you compile a few of our instructions together, you will get a sewing manual that will assist you in sewing all kinds of garments at any difficulty level.

And I would be very happy if these instructions helped you to turn your hobby into a lifelong passion... Enjoy the process! Create your ultimate dream wardrobe! Wear your garments proudly for years to come!

If you have any questions, please contact us at info@vikisews.com — we are always there to help.



PILAR PATTERN DESCRIPTION

Pilar is a loose-fitting, fully lined faux fur coat with a straight silhouette. The bust dart on the front is transferred to the shoulder seam. The coat features a turned-down, notched collar with a collar stand. There are pockets in the side seams. The coat fastens with a hidden snap closure at the center front. Pilar is below-hip length.



IMPORTANT!

The contents of this pattern are copyright protected and belong exclusively to Vikisews. You may use Vikisews patterns for personal use. It is prohibited to share Vikisews patterns and instructions with third parties, as well as to publish patterns and instructions online for public access. **Non-compliance with the mentioned rules is a violation of the US copyright law and may result in civil liability and criminal prosecution.**

You may use Vikisews patterns for commercial use, to sew custom-made garments and/or create fashion collections, on the condition that the patterns are solely used in a manufacturing setting and are not further shared with individuals.

TOTAL EASE ALLOWANCE

	Bust ease	Waistline ease	Hipline ease	Upper arm ease
cm	30.3–27.6	50.3–47.6	24.4–21.7	39–48.2
inches	11 7/8–10 7/8	19 3/4–18 3/4	9 5/8–8 1/2	15 3/8–19

GARMENT LENGTH, SLEEVE LENGTH

Height, cm	Sleeve length including shoulder width, cm	Center back length, cm
1 (154–160)	71.8–74.2	88–89.2
2 (162–168)	73.7–76.1	91–92.2
3 (170–176)	75.6–78	94–95.2
4 (178–184)	77.5–79.9	97–98.2

Height, ft	Sleeve length including shoulder width, in	Center back length, in
1 (5'1"–5'3")	28 1/4–29 1/4	34 5/8–35 1/8
2 (5'4"–5'6")	29–30	35 7/8–36 1/4
3 (5'7"–5'9")	29 3/4–30 3/4	37–37 1/2
4 (5'10"–6'1")	30 1/2–31 1/2	38 1/4–38 5/8

SUGGESTED FABRIC

To sew this coat, choose coating fabrics with the following properties: medium weight, soft, non-stretch. The fiber content can include natural fibers, artificial fibers, blends, or synthetics.

The following fabrics are recommended: faux fur with a knit or woven backing, napped coating fabrics, bouclé fabrics.

As an additional fabric, we recommend using leather, faux leather, or outerwear fabric.

For the lining, the recommended fabrics are taffeta, sateen, twill, cupro.

Attention! We recommend using medium pile faux fur (pile height up to 13 mm [1/2"]).

The coat in the photo is made of faux fur with a knit backing. The fabric is medium weight, soft, and without stretch. The fiber content is 80% wool and 20% blended fibers (polyester + viscose). The fabric weight is 650 g/m².

The additional fabric is faux leather with a knit backing. The fabric is medium weight, soft, and without stretch. The fiber content is synthetic: 45% polyester and 55% polyurethane. The fabric weight is 350 g/m².

The fiber content of the lining fabric is a blend of 95% viscose and 5% elastane. The lining fabric weight is 100 g/m².

FABRIC AND NOTIONS REQUIREMENTS

1.1. Main fabric, 140 cm wide, with a directional print/nap, in meters:

Height, cm	Size			
	34-36	38	40-48	50-52
1 (154-160)	1.7	1.75	2.05	2.05
2 (162-168)	1.75	1.8	2.1	2.1
3 (170-176)	1.8	1.8	2.15	2.2
4 (178-184)	1.8	1.85	2.2	2.25

Main fabric, 55" wide, with a directional print/nap, in yards:

Height, ft	Size			
	34-36	38	40-48	50-52
1 (5'1"-5'3")	1 7/8	1 7/8	2 1/4	2 1/4
2 (5'4"-5'6")	1 7/8	2	2 1/4	2 1/4
3 (5'7"-5'9")	2	2	2 3/8	2 3/8
4 (5'10"-6'1")	2	2	2 3/8	2 1/2

1.2. Main fabric, 150 cm wide, with a directional print/nap, in meters:

Height, cm	Size				
	34-36	38-40	42-44	46-48	50-52
1 (154-160)	1.6	1.65	1.7	2.05	2.05
2 (162-168)	1.65	1.7	1.75	2.1	2.1
3 (170-176)	1.7	1.75	1.8	2.15	2.15
4 (178-184)	1.7	1.8	1.85	2.2	2.25

Main fabric, 59" wide, with a directional print/nap, in yards:

Height, ft	Size				
	34-36	38-40	42-44	46-48	50-52
1 (5'1"-5'3")	1 3/4	1 3/4	1 7/8	2 1/4	2 1/4
2 (5'4"-5'6")	1 3/4	1 7/8	1 7/8	2 1/4	2 1/4
3 (5'7"-5'9")	1 7/8	1 7/8	2	2 3/8	2 3/8
4 (5'10"-6'1")	1 7/8	2	2	2 3/8	2 1/2

2. Additional fabric (faux leather), 140 cm wide, with a directional print, in meters:

Height, cm	Size		
	34-36	38-44	46-52
1 (154-160)	1	1.05	1.05
2 (162-168)	1	1.05	1.1
3 (170-176)	1.05	1.1	1.15
4 (178-184)	1.1	1.1	1.15

Additional fabric (faux leather), 55" wide, with a directional print, in yards:

Height, ft	Size		
	34-36	38-44	46-52
1 (5'1"-5'3")	1 1/8	1 1/8	1 1/8
2 (5'4"-5'6")	1 1/8	1 1/8	1 1/4
3 (5'7"-5'9")	1 1/8	1 1/4	1 1/4
4 (5'10"-6'1")	1 1/4	1 1/4	1 1/4

3. Lining fabric, 140 cm wide, with a directional print, in meters:

Height, cm	Size	
	34-48	50-52
1 (154-160)	1.5	1.95
2 (162-168)	1.55	2
3 (170-176)	1.6	2.05
4 (178-184)	1.65	2.15

Lining fabric, 55" wide, with a directional print, in yards:

Height, ft	Size	
	34-48	50-52
1 (5'1"-5'3")	1 5/8	2 1/8
2 (5'4"-5'6")	1 3/4	2 1/8
3 (5'7"-5'9")	1 3/4	2 1/4
4 (5'10"-6'1")	1 3/4	2 3/8

4. Knit or woven interfacing, 140 cm wide, in meters:

Height, cm	Size					
	34-40	42	44	46	48-50	52
1 (154-160)	1	1	1.05	1.05	1.05	1.05
2 (162-168)	1.05	1.05	1.05	1.05	1.1	1.1
3 (170-176)	1.05	1.1	1.1	1.1	1.1	1.15
4 (178-184)	1.1	1.1	1.1	1.15	1.15	1.15

Knit or woven interfacing, 55" wide, in yards:

Height, ft	Size		
	34-40	42-46	48-52
1 (5'1"-5'3")	1 1/8	1 1/8	1 1/8
2 (5'4"-5'6")	1 1/8	1 1/8	1 1/4
3 (5'7"-5'9")	1 1/8	1 1/4	1 1/4
4 (5'10"-6'1")	1 1/4	1 1/4	1 1/4

IMPORTANT! When purchasing fabric, please account for shrinkage and buy 5% more than required.

5. Stitched bias-cut fusible stay tape with stitch reinforcement, 1.5 cm wide, in meters:

Height, cm	Size									
	34	36	38	40	42	44	46	48	50	52
1 (154-160)	3.6	3.65	3.7	3.8	3.85	3.9	3.95	4	4.05	4.05
2 (162-168)	3.7	3.75	3.8	3.85	3.9	3.95	4	4.05	4.1	4.15
3 (170-176)	3.75	3.8	3.85	3.9	3.95	4	4.1	4.1	4.15	4.2
4 (178-184)	3.85	3.85	3.95	4	4.05	4.1	4.15	4.2	4.25	4.3

Stitched bias-cut fusible stay tape with stitch reinforcement, 5/8" wide, in yards:

Height, ft	Size									
	34	36	38	40	42	44	46	48	50	52
1 (5'1"-5'3")	3 7/8	4	4	4 1/8	4 1/4	4 1/4	4 3/8	4 3/8	4 3/8	4 3/8
2 (5'4"-5'6")	4	4 1/8	4 1/8	4 1/4	4 1/4	4 3/8	4 3/8	4 3/8	4 1/2	4 1/2
3 (5'7"-5'9")	4 1/8	4 1/8	4 1/4	4 1/4	4 3/8	4 3/8	4 1/2	4 1/2	4 1/2	4 5/8
4 (5'10"-6'1")	4 1/4	4 1/4	4 3/8	4 3/8	4 3/8	4 1/2	4 1/2	4 5/8	4 5/8	4 3/4

6. Straight-grain fusible stay tape, 1 cm wide, in meters:

Height, cm	Size									
	34	36	38	40	42	44	46	48	50	52
1 (154–160)	1.95	2	2.1	2.15	2.2	2.3	2.35	2.45	2.5	2.6
2 (162–168)	2	2.05	2.1	2.2	2.25	2.3	2.4	2.45	2.55	2.6
3 (170–176)	2	2.05	2.15	2.2	2.25	2.35	2.4	2.5	2.55	2.6
4 (178–184)	2.05	2.1	2.15	2.2	2.3	2.35	2.45	2.5	2.55	2.65

Straight-grain fusible stay tape, 3/8" wide, in yards:

Height, ft	Size									
	34	36	38	40	42	44	46	48	50	52
1 (5'1"–5'3")	2 1/8	2 1/8	2 1/4	2 3/8	2 3/8	2 1/2	2 5/8	2 5/8	2 3/4	2 7/8
2 (5'4"–5'6")	2 1/8	2 1/4	2 1/4	2 3/8	2 1/2	2 1/2	2 5/8	2 5/8	2 3/4	2 7/8
3 (5'7"–5'9")	2 1/8	2 1/4	2 3/8	2 3/8	2 1/2	2 5/8	2 5/8	2 3/4	2 3/4	2 7/8
4 (5'10"–6'1")	2 1/4	2 1/4	2 3/8	2 3/8	2 1/2	2 5/8	2 5/8	2 3/4	2 3/4	2 7/8

7. Matching thread — 1 spool

TOOLS AND EQUIPMENT

- sewing machine for construction
- utility knife for cutting the faux fur (optional)
- teflon foot for the sewing machine
- long sewing pins or sewing clips
- large needle or comb for brushing out pile and fur

PATTERN PIECES LIST

1. From main fabric:

- front — cut 2
- back — cut 1 on fold
- upper collar — cut 1 on fold
- undercollar — cut 2
- collar stand — cut 2
- top front facing — cut 2
- sleeve — cut 2

2. From additional fabric (faux leather):

- bottom front facing — cut 2
- pocket facing — cut 4

3. From lining fabric:

- front lining — cut 2
- back lining — cut 1 on fold
- sleeve lining — cut 2
- pocket lining — cut 4

4. From interfacing:

- upper collar — cut 1 on fold
- undercollar — cut 2
- collar stand — cut 2
- bottom front facing — cut 2
- top front facing — cut 2
- pocket facing — cut 4

IMPORTANT! Don't forget to transfer all pattern markings and notches onto the fabric.

SEAM ALLOWANCES

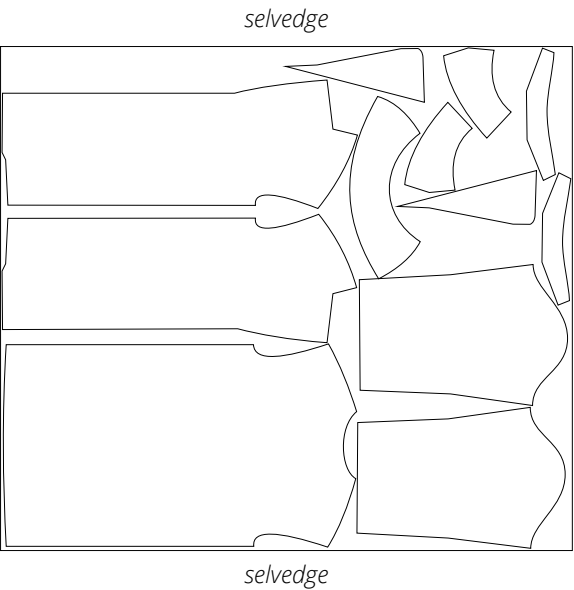
All pattern pieces include seam allowances as follows:

- hem allowance on the front, back, bottom front facing, and sleeve pieces — 4 cm (1 5/8")
- all other edges — 1 cm (3/8").

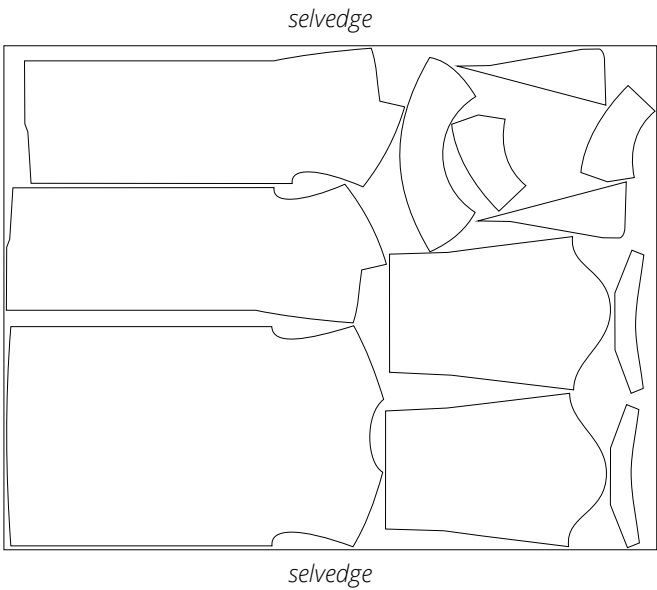
Take this into account when laying out pattern pieces on the fabric.

CUTTING LAYOUT

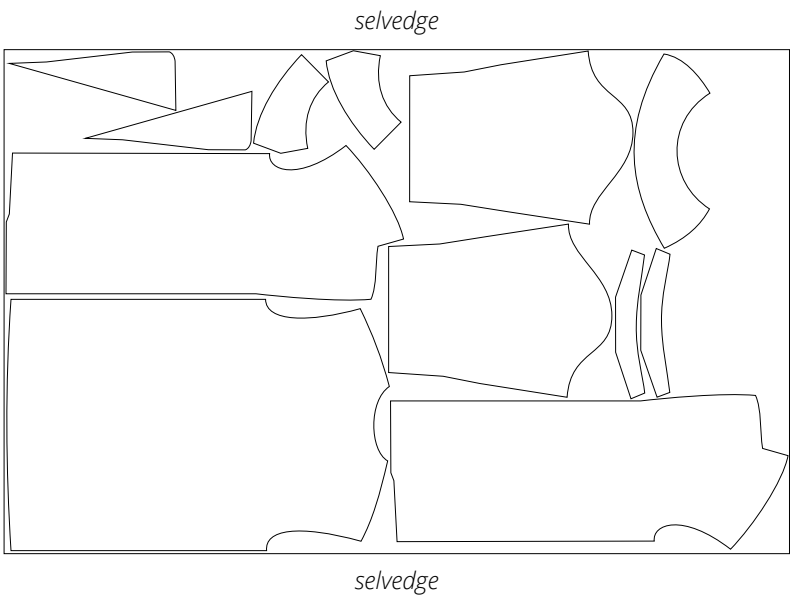
Main fabric, 150 cm (59") wide, with a directional print/nap, cut on a single layer, for sizes 34–36 in all heights



Main fabric, 140 cm (55") wide, with a directional print/nap, cut on a single layer, for sizes 34–38 in all heights; main fabric, 150 cm (59") wide, with a directional print/nap, cut on a single layer, for sizes 38–44 in all heights



Main fabric, 140 cm (55") wide, with a directional print/nap, cut on a single layer, for sizes 40–48 in all heights; main fabric, 150 cm (59") wide, with a directional print/nap, cut on a single layer, for sizes 46–52 in all heights





Match up the dart legs on the wrong side of the front piece, secure with pins or clips, and hand-baste.



Stitch on the sewing machine, backstitching at the beginning and end of the seam. Remove the basting stitches.



Cut the dart open in the middle, stopping about 3–4 cm (1 1/8–1 5/8") short of the dart point.