

FROM THE FOUNDER OF THE #VIKISEWS BRAND



Back in 2016, when I was working on my first set of sewing instructions, I was trying to write them in such a way that even a complete beginner could easily understand and use them to create their very first garment. These instructions laid the foundation for the Vikisews brand, its vision and its mission. I wanted to create modern patterns with the most detailed and clear instructions.

Now, with each new collection we are constantly improving our instructions, amending them and adding more relevant details. By the time the final product reaches you, our drafters, correctors, and editors would have spent weeks perfecting every word and every photograph. If you compile a few of our instructions together, you will get a sewing manual that will assist you in sewing all kinds of garments at any difficulty level.

And I would be very happy if these instructions helped you to turn your hobby into a lifelong passion... Enjoy the process! Create your ultimate dream wardrobe! Wear your garments proudly for years to come!

If you have any questions, please contact us at info@vikisews.com - we are always there to help.



UNI PATTERN DESCRIPTION

Uni features a semi fitted bodice, an empire waist and a voluminous skirt with gathers. The shaping of the bodice is achieved with bust and waist darts. The front bodice has a wide, square neck, while the back bodice has a U-shaped neckline ending at the waistline. The neckline edge on the back bodice is gathered using elastic threaded through applied channels. The back strap sewn into the channels at the shoulder blades level secures the back bodice in place. The back bodice features wide ties that form a bow with long tails at the bust level. The shoulder seams have been shortened. The voluminous sleeves are set-in and feature tight gathers around the cap. The hem of the sleeve is elasticated. The sleeve is above-elbow length. The skirt is straight, wide and features tight gathers at the waistline. Uni is above-knee length.



IMPORTANT!

The contents of this pattern are copyright protected and belong exclusively to Vikisews. You may use Vikisews patterns for personal use. It is prohibited to share Vikisews patterns and instructions with third parties, as well as to publish patterns and instructions online for public access. **Non-compliance with the mentioned rules is a violation of the US copyright law and may result in civil liability and criminal prosecution.**

You may use Vikisews patterns for commercial use, to sew custom-made garments and/or create fashion collections, on the condition that the patterns are solely used in a manufacturing setting and are not further shared with individuals.

TOTAL EASE ALLOWANCE

Bust ease, cm	Waistline ease, cm	Hipline ease, cm	Upper arm ease, cm
1.3-3.6	107.8-158.6	89.9-141.5	64.6-87.8

GARMENT LENGTH, SLEEVE LENGTH

Height, cm	Garment length from waist down, cm	Sleeve length, cm
1 (154-160)	43.4	37.7
2 (162-168)	45.5	39.3
3 (170-176)	48.1	40.6-41.1
4 (178-184)	50.7	42.2-42.7

SUGGESTED FABRIC

To sew this dress, choose dress-weight fabrics with the following properties:

- medium weight, with good drape, breathable, soft, non-stretch or with little stretch, opaque;
- the fabric content can include natural (silk, cotton, linen), artificial (viscose), blends (silk + polyester, cotton + viscose, etc.), and synthetic fibers (polyester, polyester + elastane)
- the following fabrics are recommended: cotton with good drape, crinkle fabric, shirting fabric, denim, manmade silk with good-drape.

Attention! We do not recommend very stretchy knit materials (viscose jersey fabric) and lightweight sheer fabrics (chiffon, organza, stretch lace).

The dress on the photo is made in crinkled fabric. This fabric is medium weight, soft, has good drape and very little stretch. The fiber content is a blend of cotton (88%), polyamide (11%), and elastane (1%).

FABRIC AND NOTIONS REQUIREMENTS

1. Main fabric, 135cm wide, with nap or one-way design, in meters:

1st part

Height, cm	Size 34	Size 36-38	Size 40	Size 42	Size 44-46	Size 48
1 (154-160)	1.57	1.6	1.65	1.85	1.95	1.95
2 (162-168)	1.65	1.65	1.8	1.85	2	2.05
3 (170-176)	1.7	1.7	1.8	1.95	2.05	2.1
4 (178-184)	1.75	1.75	1.95	2	2.15	2.15

Important! The pattern layout for the main fabric 135cm wide is available only up to size 48. For sizes 50-52, please refer to the layout for the main fabric 145cm wide.

2. Main fabric, 145cm wide, with nap or one-way design, in meters:

1st part

Height, cm	Size									
	34	36	38	40	42	44	46	48	50	52
1 (154-160)	1.55	1.55	1.6	1.65	1.65	1.7	1.8	1.9	1.95	1.95
2 (162-168)	1.6	1.65	1.65	1.65	1.65	1.8	1.8	1.95	2	2
3 (170-176)	1.7	1.7	1.7	1.7	1.8	1.8	1.9	2	2.05	2.05
4 (178-184)	1.75	1.75	1.75	1.75	1.9	1.9	1.95	2.1	2.1	2.15

3. Main fabric, 135cm wide and more, with nap or one-way design, for cutting-out on a single layer of fabric, for all sizes and heights, in meters:

2nd part

Height, cm	Yardage
1 (154-160)	0.85
2 (162-168)	0.9
3 (170-176)	0.9
4 (178-184)	0.95

4. Elastic, 1 cm wide, in centimetres:

Size	Height			
	1 (154-160)	2 (162-168)	3 (170-176)	4 (178-184)
34	140.2	138.8	140.6	142.7
36	135.8	143.3	145.2	147.3
38	140.1	148.2	150.1	151.2
40	144.7	153.9	157.8	159.8
42	159.7	158.7	160.3	162.3
44	165.3	164.5	165.9	168.1
46	170.9	169.9	171.7	173.7
48	176.7	175.9	177.9	179.5
50	182.3	181.5	185.1	185.3
52	188.1	187.3	189.5	190.9

IMPORTANT! When purchasing fabric, please account for shrinkage and buy 5% more than required.

5. Lightweight fusible knit interfacing, 140cm wide for all sizes and heights – 0.2m.

6. Matching thread, 5 spools (1 spool for the sewing machine and 4 spools for the serger)

TOOLS AND EQUIPMENT

- sewing machine for construction;
- serger for finishing raw edges. This may be replaced with a stretch overlock stitch or a zigzag stitch on the sewing machine (overlock or zigzag stitch width 2-3mm, stitch length 2.5mm);
- bodkin for threading elastic through a channel (may be replaced with a safety pin).

PATTERN PIECES LIST

1. From main fabric:

- Front bodice – cut 1 on fold
- Back bodice – cut 2
- Front skirt – cut 1 on fold
- Back skirt – cut 1 on fold
- Sleeve – cut 2
- Front neck facing – cut 1 on fold
- Back channel – cut 2
- Back skirt channel – cut 1 on fold
- Back strap – cut 1
- Back tie – cut 2

2. From interfacing:

- Front neck facing – cut 1 on fold.

IMPORTANT!

Don't forget to transfer all pattern markings and notches onto the fabric.

SEAM ALLOWANCES

All pattern pieces include seam allowances as follows:

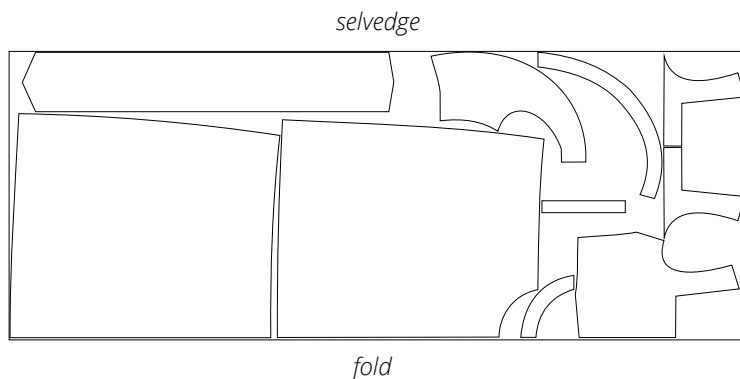
- garment hem allowance – 2cm
- sleeve hem allowance – 2.3cm
- all other seams – 1cm

Take this into account when laying out pattern pieces on the fabric.

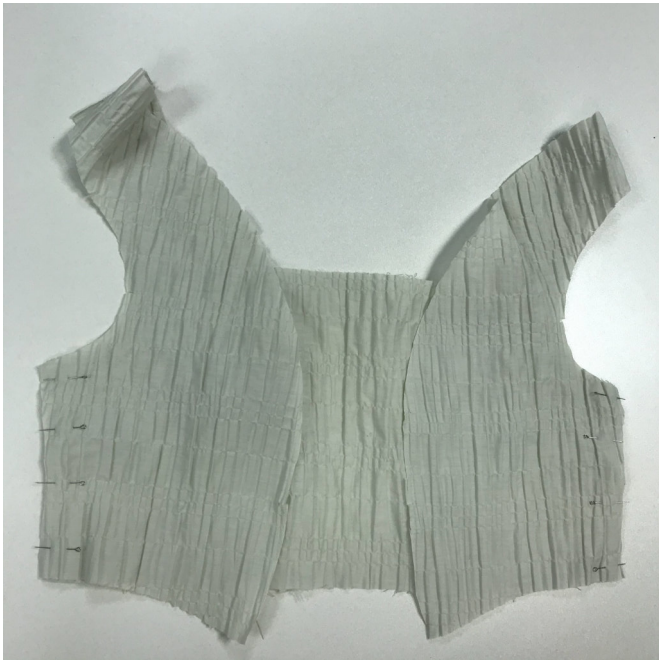
CUTTING LAYOUT

Important! The pattern layout for cutting-out on a fold from the main fabric 135cm wide is available only up to size 48. For sizes 50-52, please refer to the pattern layout given for the main fabric 145cm wide.

Main fabric with nap or one-way design, 135cm wide, folded,
for sizes 34-38 in all heights, 1st part



Important! Cut the front neck facing on fold, as a single piece, out of the leftover fabric.



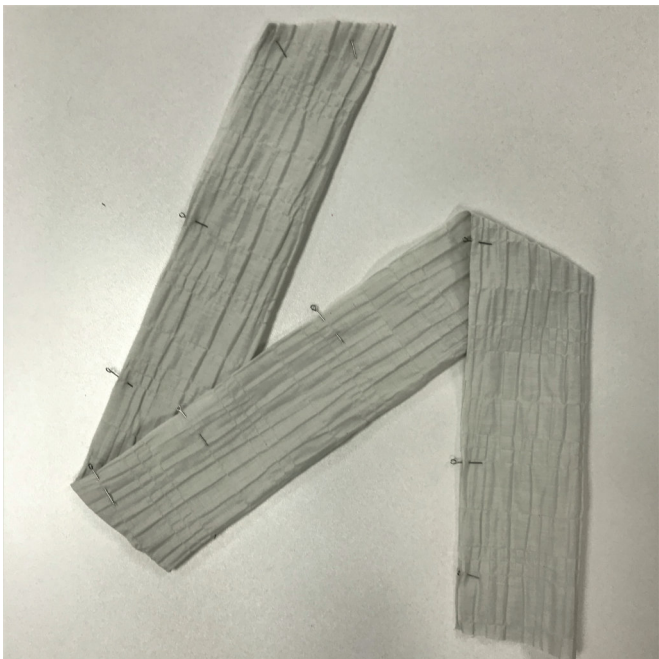
Align the side seams. Pin and baste.



Machine the side seams.

Serge the seam allowances with the front bodice piece facing up.

Press the seams flat. Press the seam allowances towards the back bodice piece.



Align the long edges of the back tie pieces, right side inside. Pin and baste.