

FROM THE FOUNDER OF THE #VIKISEWS BRAND

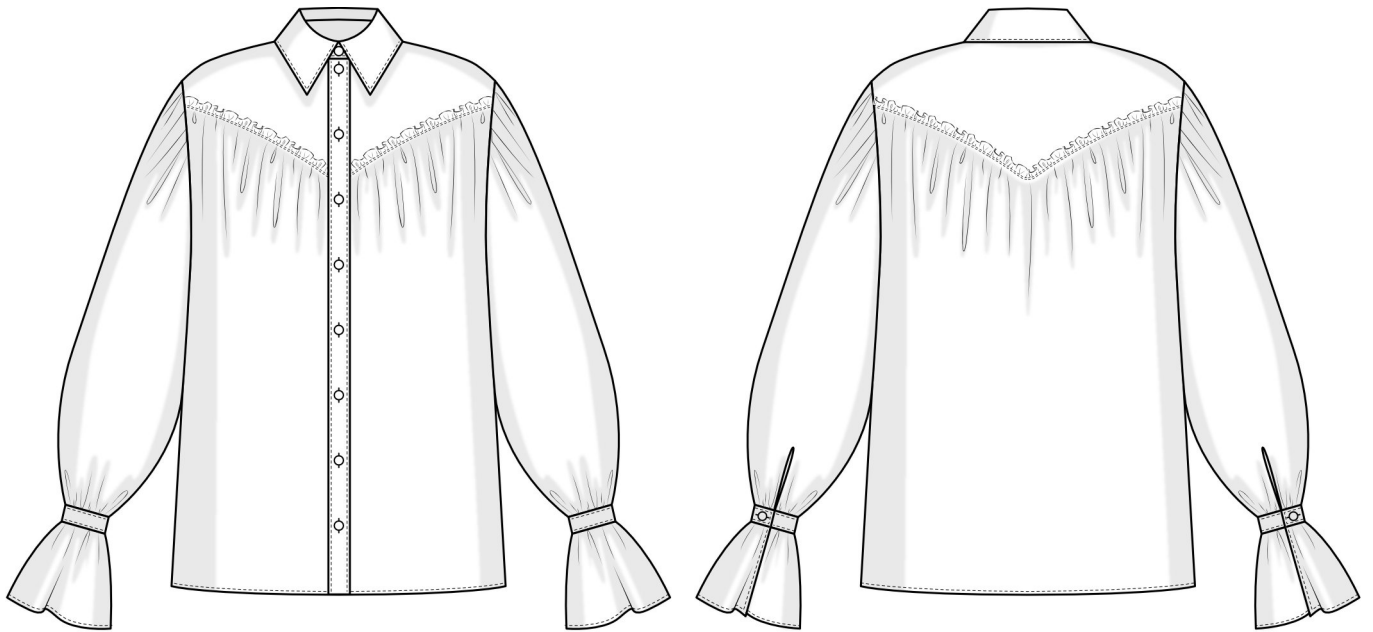


Back in 2016, when I was working on my first set of sewing instructions, I was trying to write them in such a way that even a complete beginner could easily understand and use them to create their very first garment. These instructions laid the foundation for the Vikisews brand, its vision and its mission. I wanted to create modern patterns with the utmost detailed and clear instructions.

Now, with each new collection we are constantly improving our instructions, amending them and adding more relevant details. By the time the final product reaches you, our drafters, correctors, and editors would have spent weeks perfecting every word and every photograph. If you compile a few of our instructions together, you will get a sewing manual that will assist you in sewing all kinds of garments at any difficulty level.

And I would be very happy if these instructions helped you to turn your hobby into a lifelong passion... Enjoy the process! Create your ultimate dream wardrobe! Wear your garments proudly for years to come!

If you have any questions, please contact us at info@vikisews.com — we are always there to help.



LAGERTHA PATTERN DESCRIPTION

Lagertha is a straight-cut, loose-fitting blouse. The front and back of the blouse feature gathered top edges and applied shaped yokes. The blouse closes with an applied center front button placket. The turn-down collar has a separate collar stand. Voluminous long shirt sleeves are gathered at the sleeve cap and bottom edge. Each sleeve has a bound slit and is finished with a narrow buttoned cuff and applied ruffle. Lagertha is hip-length.



IMPORTANT!

The contents of this pattern are copyright protected and belong exclusively to Vikisews. You may use Vikisews patterns for personal use. It is prohibited to share Vikisews patterns and instructions with third parties, as well as to publish patterns and instructions online for public access. **Non-compliance with the mentioned rules is a violation of the US copyright law and may result in civil liability and criminal prosecution.**

You may use Vikisews patterns for commercial use, to sew custom-made garments and/or create fashion collections, on the condition that the patterns are solely used in a manufacturing setting and are not further shared with individuals.

TOTAL EASE ALLOWANCE

	Bust ease	Waistline ease	Hipline ease	Upper arm ease
cm	76.6–95.8	90.2–112	58–81	38–41
inches	30 1/8–37 3/4	35 1/2–44 1/8	22 7/8–31 7/8	15–16 1/8

GARMENT LENGTH, SLEEVE LENGTH

Height, cm	Back length, cm	Sleeve length including shoulder width, cm
1 (154–160)	66.3	81
2 (162–168)	69.3	84
3 (170–176)	72.3	86
4 (178–184)	75.3	88

Height, ft	Back length, in	Sleeve length including shoulder width, in
1 (5'1"–5'3")	26 1/8	31 7/8
2 (5'4"–5'6")	27 1/4	33 1/8
3 (5'7"–5'9")	28 1/2	33 7/8
4 (5'10"–6'1")	29 5/8	34 5/8

SUGGESTED FABRIC

To sew this blouse, choose lightweight, soft, non-stretch or low-stretch, sheer or semi-sheer dress-weight fabrics made of natural, artificial, synthetic fibers, or blends.

The following fabrics are recommended: shirting, gauze, textured viscose, silk, artificial silk, chiffon, batiste, organza.

Attention! We do not recommend heavyweight, thick fabrics (heavyweight linen, denim), as well as knit fabrics.

The blouse in the photos is made of batiste. The fabric is lightweight, soft, and non-stretch. The fiber content is 100% cotton. The fabric weight is 60 g/m².

FABRIC AND NOTIONS REQUIREMENTS

1. Main fabric, 140 cm wide, with a directional print/nap, in meters:

Height, cm	Size			
	34–36	38–40	42–46	48–52
1 (154–160)	1.95	2.05	2.25	2.4
2 (162–168)	2	2.1	2.3	2.45
3 (170–176)	2.05	2.2	2.4	2.5
4 (178–184)	2.1	2.25	2.5	2.6

Main fabric, 55" wide, with a directional print/nap, in yards:

Height, ft	Size			
	34–36	38–40	42–46	48–52
1 (5'1"–5'3")	2 1/8	2 1/4	2 1/2	2 5/8
2 (5'4"–5'6")	2 1/8	2 1/4	2 1/2	2 5/8
3 (5'7"–5'9")	2 1/4	2 3/8	2 5/8	2 3/4
4 (5'10"–6'1")	2 1/4	2 1/2	2 3/4	2 7/8

IMPORTANT! When purchasing fabric, please account for shrinkage and buy 5% more than required.

2. Lightweight interfacing, knit or woven, 140 cm (55") wide, for all sizes in all heights — 0.75 m (7/8 yd)
3. Eleven button blanks (plus one or two spare ones), 1.2 cm (1/2") in diameter
4. Matching thread — 4 spools (1 spool for the sewing machine + 3 spools for the overlocker)

TOOLS AND EQUIPMENT

- sewing machine for construction
- overlocker for finishing raw edges. This may be replaced with a stretch overlock stitch or a zigzag stitch on the sewing machine (overlock or zigzag stitch width 2–3 mm, stitch length 2.5 mm)
- buttonhole foot for the sewing machine
- press tool and molds for button covering

PATTERN PIECES LIST

1. From main fabric:

- front — cut 2
- back — cut 1 on fold
- front yoke — cut 2
- back yoke — cut 1 on fold
- placket — cut 4
- sleeve — cut 2
- undercollar — cut 1
- upper collar — cut 1
- collar stand — cut 2
- cuff — cut 4
- sleeve ruffle — cut 2
- sleeve placket binding — cut 2

2. From interfacing:

- placket — cut 4
- undercollar — cut 1
- upper collar — cut 1
- collar stand — cut 2
- cuff — cut 4

Additionally, cut the following from the main fabric:

- Eleven circles, 2 cm (3/4") in diameter, to cover the button blanks

IMPORTANT! Don't forget to transfer all pattern markings and notches onto the fabric.

SEAM ALLOWANCES

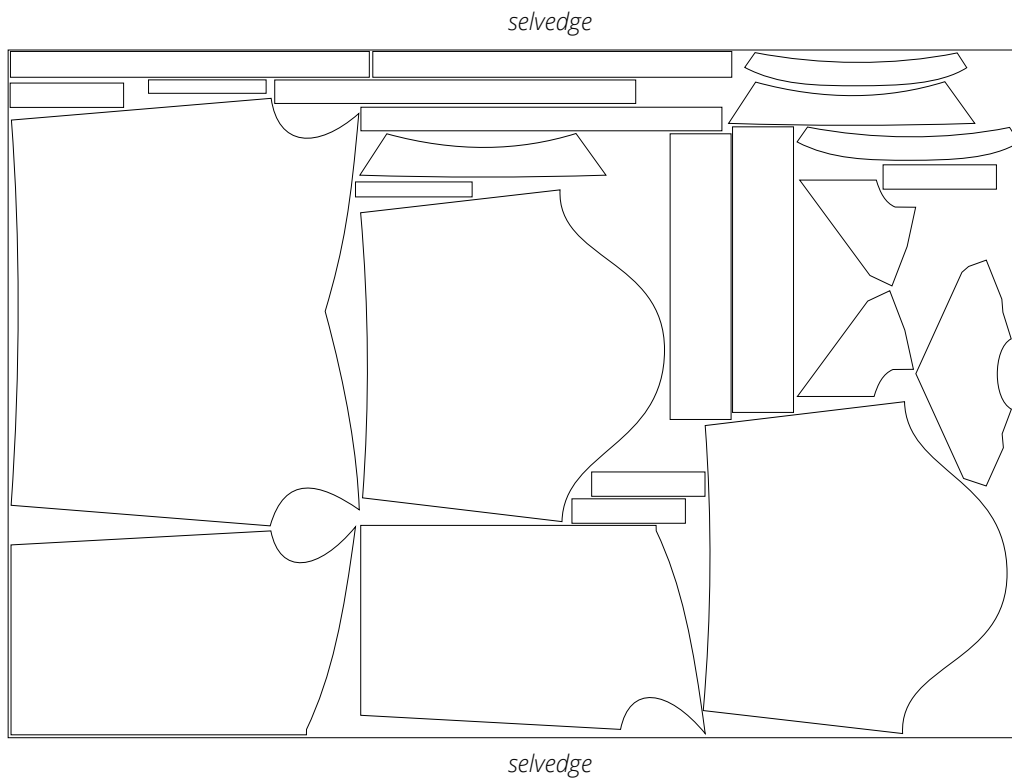
All pattern pieces include seam allowances as follows:

- top edge on the front piece — 1.5 cm (5/8")
- top edge on the back piece — 1.5 cm (5/8")
- all other edges — 1 cm (3/8").

Take this into account when laying out pattern pieces on the fabric.

CUTTING LAYOUT

Main fabric, 140 cm (55") wide, with a directional print/nap,
cut on a single layer, for sizes 34–36 in all heights





Stitch on the sewing machine exactly over the second gathering line, with the front piece facing up. Backstitch at the beginning and end of the seam.

Press the seam flat without steam.



Gather the top edge of the back piece by pulling on both lower (bobbin) threads simultaneously. Distribute the gathers evenly. The gathered edge of the back piece should be equal in length to the bottom edge of the back yoke.



Place the back and back yoke pieces wrong sides together. Align the back yoke's edge with the first gathering line on the back piece. Pin in place.