

FROM THE FOUNDER OF THE #VIKISEWS BRAND

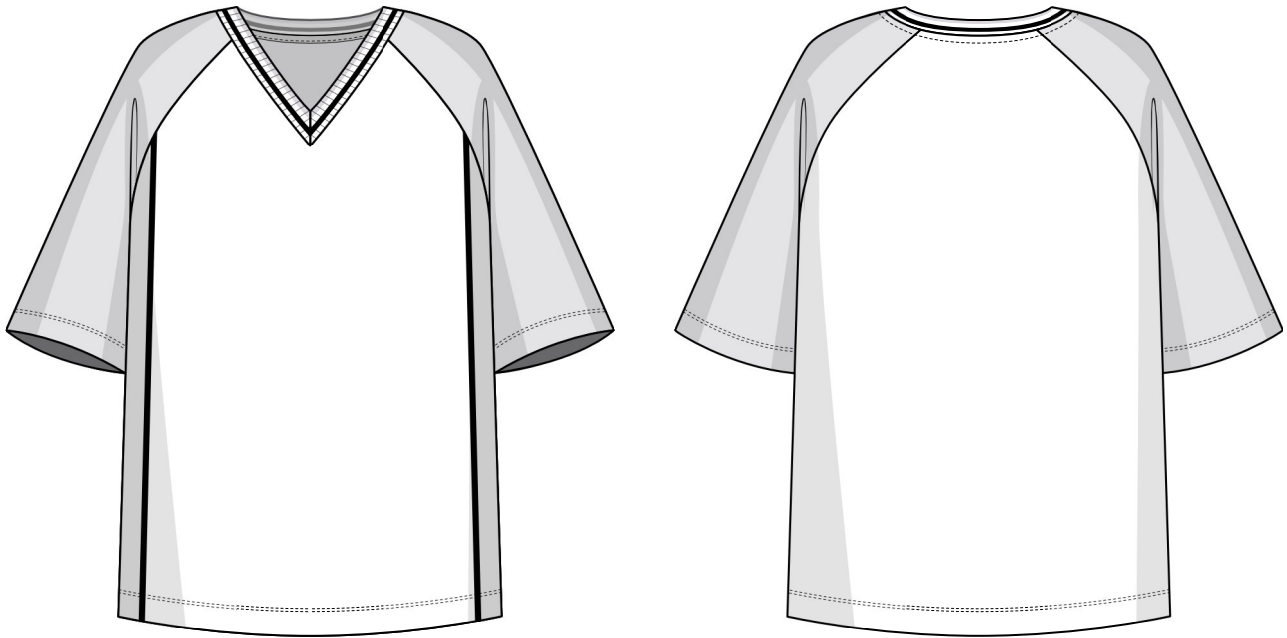


Back in 2016, when I was working on my first set of sewing instructions, I was trying to write them in such a way that even a complete beginner could easily understand and use them to create their very first garment. These instructions laid the foundation for the Vikisews brand, its vision and its mission. I wanted to create modern patterns with the utmost detailed and clear instructions.

Now, with each new collection we are constantly improving our instructions, amending them and adding more relevant details. By the time the final product reaches you, our drafters, correctors, and editors would have spent weeks perfecting every word and every photograph. If you compile a few of our instructions together, you will get a sewing manual that will assist you in sewing all kinds of garments at any difficulty level.

And I would be very happy if these instructions helped you to turn your hobby into a lifelong passion... Enjoy the process! Create your ultimate dream wardrobe! Wear your garments proudly for years to come!

If you have any questions, please contact us at info@vikisews.com — we are always there to help.



MARLEY PATTERN DESCRIPTION

Marley is a semi-fitted T-shirt with a straight silhouette. The V-neckline is finished with a neckband. The front princess seams are trimmed with piping. The raglan sleeves are above-elbow length. Marley is below-hip length.



IMPORTANT!

The contents of this pattern are copyright protected and belong exclusively to Vikisews. You may use Vikisews patterns for personal use. It is prohibited to share Vikisews patterns and instructions with third parties, as well as to publish patterns and instructions online for public access. **Non-compliance with the mentioned rules is a violation of the US copyright law and may result in civil liability and criminal prosecution.**

You may use Vikisews patterns for commercial use, to sew custom-made garments and/or create fashion collections, on the condition that the patterns are solely used in a manufacturing setting and are not further shared with individuals.

TOTAL EASE ALLOWANCE

	Bust ease	Waistline ease	Hipline ease	Upper arm ease
cm	20–24	40–44	14–18	50.1–51.5
inches	7 7/8–9 1/2	15 3/4–17 3/8	5 1/2–7 1/8	19 3/4–20 1/4

GARMENT LENGTH, SLEEVE LENGTH

Height, cm	Back length including neckband, cm	Sleeve length including shoulder width and neckband, cm
1 (154–160)	67	41–46
2 (162–168)	69	42–47
3 (170–176)	71	43–48
4 (178–184)	73	44–49

Height, ft	Back length including neckband, in	Sleeve length including shoulder width and neckband, in
1 (5'1"–5'3")	26 3/8	16 1/8–18 1/8
2 (5'4"–5'6")	27 1/8	16 1/2–18 1/2
3 (5'7"–5'9")	28	16 7/8–18 7/8
4 (5'10"–6'1")	28 3/4	17 3/8–19 1/4

SUGGESTED FABRIC

To sew this T-shirt, choose soft, medium-weight, medium-stretch or high-stretch knit fabrics made of natural fibers, artificial fibers, blends, or synthetics.

The following fabrics are recommended: jersey knits, piqué, stretch cotton, French terry.

As an additional material for the neckband, we recommend using rib knit fabrics (neck trims).

The T-shirt in the photo is made of two knit fabrics in different colors. The fabrics are medium weight, soft, stretchy, and wrinkle-resistant. The fiber content of the grey fabric is 95% cotton and 5% elastane. The fabric weight is 180 g/m². The fiber content of the white fabric is 100% polyester. The fabric weight is 150 g/m².

The neckband is made of rib knit fabric (trim). The fiber content is 100% polyester. The fabric weight is 190 g/m².

FABRIC AND NOTIONS REQUIREMENTS

1. Main fabric (one-colored garment), 140 cm wide, with a directional print/nap, in meters:

Height, cm	Size		
	XS	S	M-XL
1 (154–160)	1.1	1.15	1.3
2 (162–168)	1.15	1.15	1.35
3 (170–176)	1.15	1.2	1.4
4 (178–184)	1.2	1.25	1.4

Main fabric (color-blocked garment, color 1), 140 cm wide, with a directional print/nap, for all sizes, in meters:

Height, cm	Size
	XS-XL
1 (154–160)	0.75
2 (162–168)	0.75
3 (170–176)	0.8
4 (178–184)	0.8

Main fabric (color-blocked garment, color 2), 140 cm wide, with a directional print/nap, for all sizes, in meters:

Height, cm	Size
	XS-XL
1 (154–160)	0.55
2 (162–168)	0.55
3 (170–176)	0.6
4 (178–184)	0.6

Main fabric (one-colored garment), 55" wide, with a directional print/nap, in yards:

Height, ft	Size		
	XS	S	M-XL
1 (5'1"–5'3")	1 1/4	1 1/4	1 3/8
2 (5'4"–5'6")	1 1/4	1 1/4	1 1/2
3 (5'7"–5'9")	1 1/4	1 1/4	1 1/2
4 (5'10"–6'1")	1 1/4	1 3/8	1 1/2

Main fabric (color-blocked garment, color 1), 55" wide, with a directional print/nap, for all sizes, in yards:

Height, ft	Size
	XS-XL
1 (5'1"–5'3")	7/8
2 (5'4"–5'6")	7/8
3 (5'7"–5'9")	7/8
4 (5'10"–6'1")	7/8

Main fabric (color-blocked garment, color 2), 55" wide, with a directional print/nap, for all sizes, in yards:

Height, ft	Size
	XS-XL
1 (5'1"–5'3")	5/8
2 (5'4"–5'6")	5/8
3 (5'7"–5'9")	5/8
4 (5'10"–6'1")	5/8

2. Additional fabric (trim) for the neckband, 5 cm wide, for all heights, in centimeters:

Size	XS	S	M	L	XL
cm	66	68	70	72	74

Additional fabric (trim) for the neckband, 2" wide, for all heights, in inches:

Size	XS	S	M	L	XL
inches	26	26 3/4	27 1/2	28 3/8	29 1/8

IMPORTANT! When purchasing fabric, please account for shrinkage and buy 5% more than required.

3. Decorative satin piping, 1.2 cm (1/2") wide, for all sizes in all heights — 1.2 m (1 1/4 yd)

4. Twill tape for the back neckline, 1 cm wide, for all heights, in centimeters:

Size	XS	S	M	L	XL
cm	26.5	28	30	31.5	33

Twill tape for the back neckline, 3/8" wide, for all heights, in inches:

Size	XS	S	M	L	XL
inches	10 3/8	11	11 3/4	12 3/8	13

5. Matching thread — 5 spools (1 spool for the sewing machine + 4 spools for the overlocker)

TOOLS AND EQUIPMENT

- sewing machine for construction
- overlocker for construction and finishing raw edges. It can be replaced with a stretch overlock stitch or a zigzag stitch on the sewing machine (overlock or zigzag stitch width 2–3 mm, stitch length 2.5 mm)
- coverstitch or coverlock machine for finishing the garment hem. If you don't have a coverstitch machine, it can be replaced with a twin needle on any regular sewing machine that can do a zigzag stitch
- one-sided foot for piping

IMPORTANT! We recommend using specialty needles when working with knit fabrics (for example, STRETCH, SUPER STRETCH, JERSEY, etc.). When sewing, a ball-shaped needle point pushes the knit loops apart without piercing the threads.

PATTERN PIECES LIST

1. From main fabric:

- middle front — cut 1 on fold
- side front* — cut 2
- back — cut 1 on fold
- front sleeve* — cut 2
- back sleeve* — cut 2
- neckband — cut 1

Attention! If you are making the color-blocked version, cut the pieces marked with * from the contrasting fabric.

2. From additional fabric:

- neckband template — cut 1

IMPORTANT! Don't forget to transfer all pattern markings and notches onto the fabric.

SEAM ALLOWANCES

All pattern pieces include seam allowances as follows:

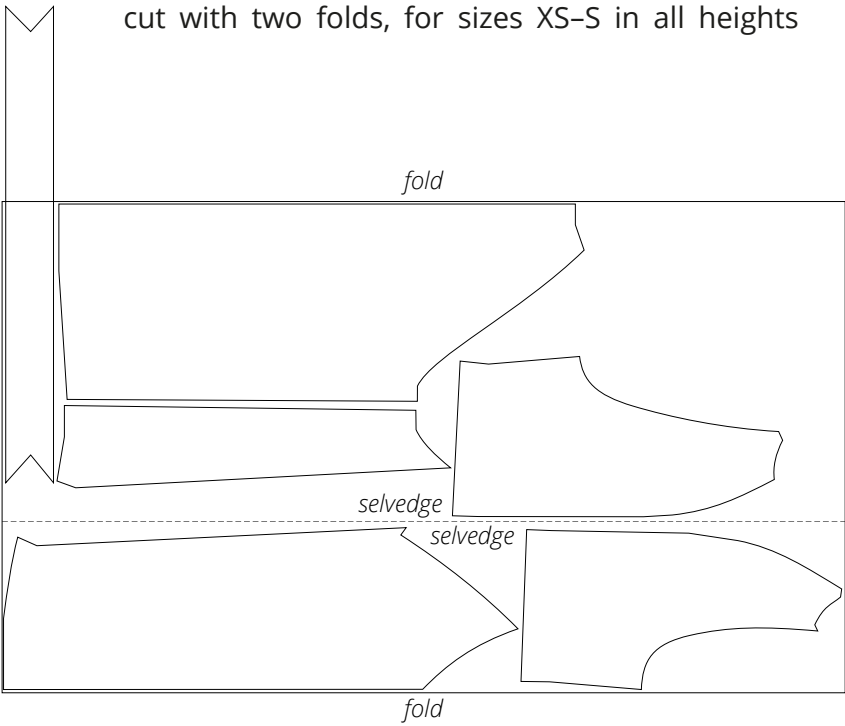
- garment hem allowance — 3 cm (1 1/8")
- sleeve hem allowance — 3 cm (1 1/8")
- all other edges — 1 cm (3/8")

Take this into account when laying out pattern pieces on the fabric.

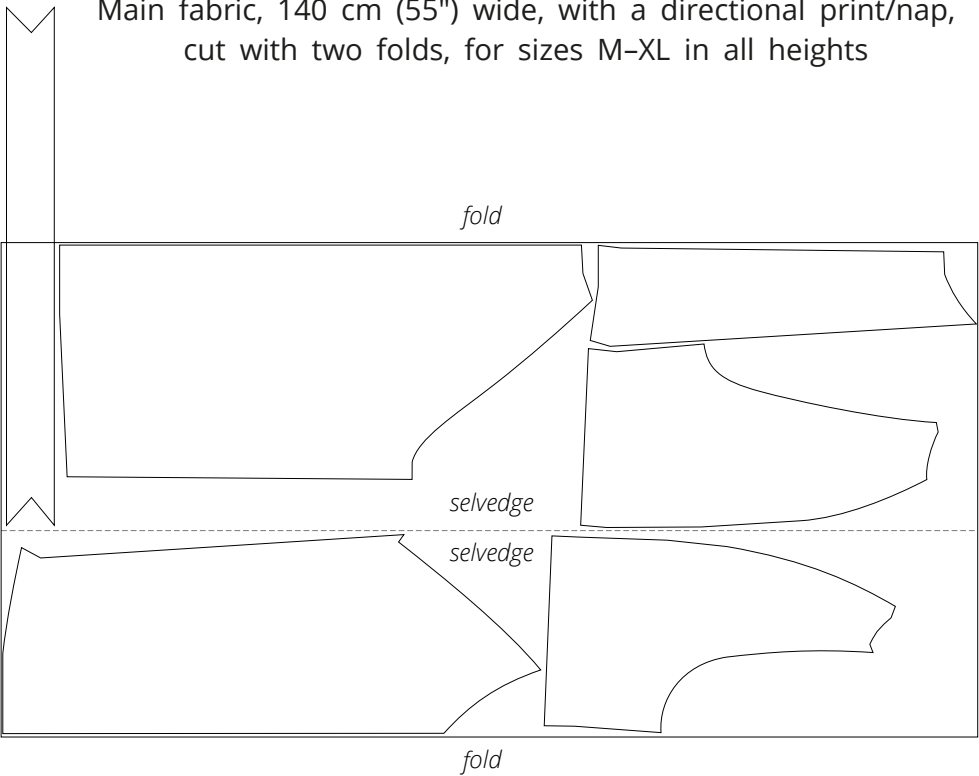
CUTTING LAYOUT

GARMENT MADE OF ONE FABRIC

Main fabric, 140 cm (55") wide, with a directional print/nap, cut with two folds, for sizes XS-S in all heights

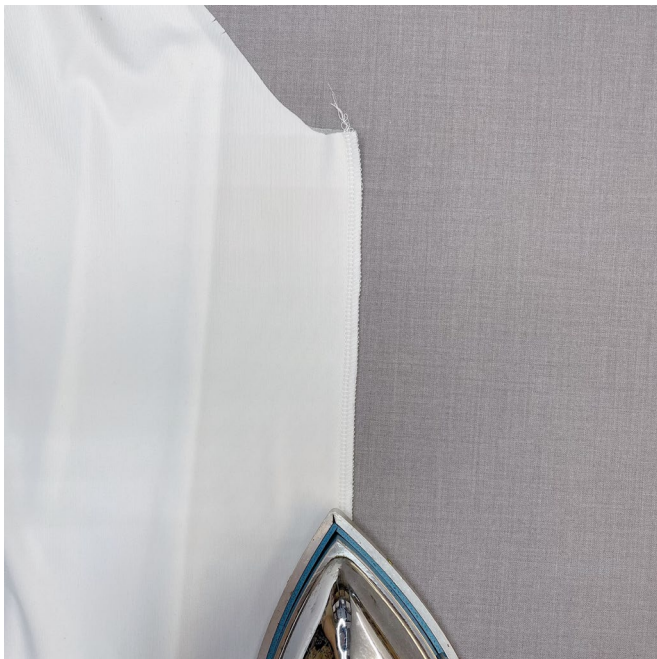


Main fabric, 140 cm (55") wide, with a directional print/nap, cut with two folds, for sizes M-XL in all heights





Place the assembled front and back pieces right sides together. Align the side edges, match the notches, and pin.

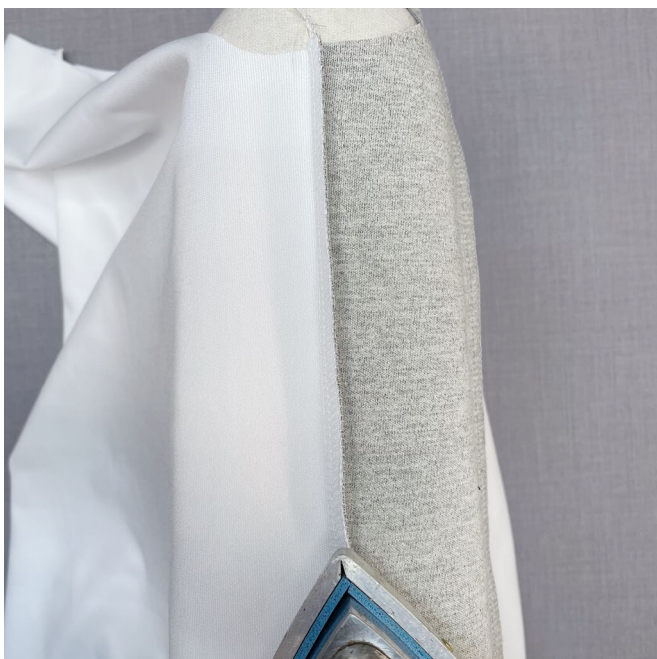


Stitch the side seams on the overlocker, with the back piece facing up.

Press the seams flat.

Use a 4-thread overlocker for this step, as well as for the following similar steps. You can replace the overlocker with a stretch or zigzag stitch on your sewing machine.

Important! The pattern pieces include 1 cm (3/8") seam allowances. The overlocker stitch width is 7 mm (just over 1/4"), so 3 mm (1/8") need to be trimmed off. You can either trim the seam allowances beforehand or let the overlocker cut off the extra fabric while stitching.



Press the side seam allowances towards the front piece.