

# FROM THE FOUNDER OF THE #VIKISEWS BRAND

---

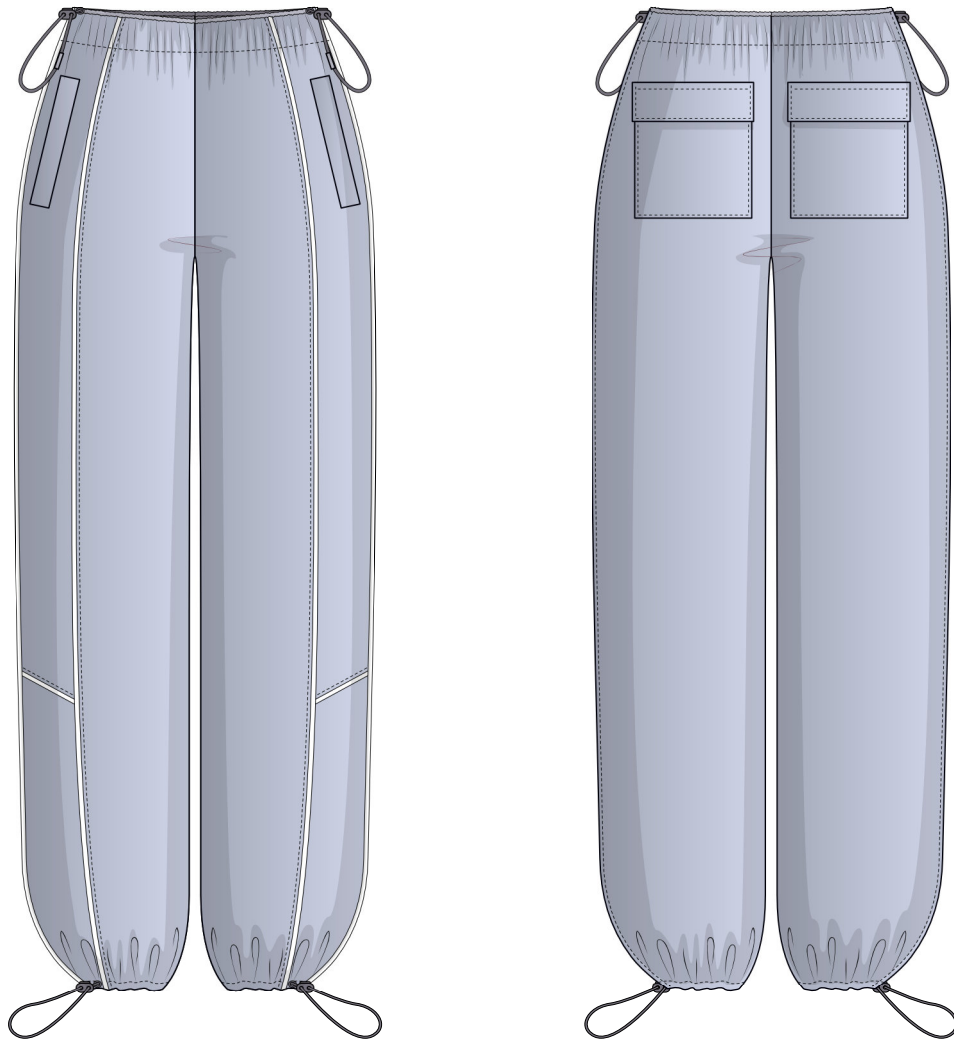


Back in 2016, when I was working on my first set of sewing instructions, I was trying to write them in such a way that even a complete beginner could easily understand and use them to create their very first garment. These instructions laid the foundation for the Vikisews brand, its vision and its mission. I wanted to create modern patterns with the utmost detailed and clear instructions.

Now, with each new collection we are constantly improving our instructions, amending them and adding more relevant details. By the time the final product reaches you, our drafters, correctors, and editors would have spent weeks perfecting every word and every photograph. If you compile a few of our instructions together, you will get a sewing manual that will assist you in sewing all kinds of garments at any difficulty level.

And I would be very happy if these instructions helped you to turn your hobby into a lifelong passion... Enjoy the process! Create your ultimate dream wardrobe! Wear your garments proudly for years to come!

If you have any questions, please contact us at [info@vikisews.com](mailto:info@vikisews.com) — we are always there to help.



## GWEN PATTERN DESCRIPTION

---

Gwen is a pair of loose-fitting, straight-cut pants sitting 6 cm (2 3/8") below the natural waistline. The top edge is finished with an elastic facing and binding with elastic cord threaded through it. The cord is adjustable thanks to the stoppers at the side seams. There are zippered welt pockets on the front and patch pockets with Velcro flaps on the back. The side seams and design lines feature piping and topstitching. An elastic cord with a stopper is also threaded through the casing at the garment hem. The pants are ankle-length.



## IMPORTANT!

---

The contents of this pattern are copyright protected and belong exclusively to Vikisews. You may use Vikisews patterns for personal use. It is prohibited to share Vikisews patterns and instructions with third parties, as well as to publish patterns and instructions online for public access. **Non-compliance with the mentioned rules is a violation of the US copyright law and may result in civil liability and criminal prosecution.**

You may use Vikisews patterns for commercial use, to sew custom-made garments and/or create fashion collections, on the condition that the patterns are solely used in a manufacturing setting and are not further shared with individuals.

# TOTAL EASE ALLOWANCE

	Waistline ease (estimated)	Hipline ease
cm	28.5–32.2	15.5–18.2
inches	11 1/4–12 5/8	6 1/8–7 1/8

# GARMENT LENGTH

Height, cm	Side seam length including waist casing, cm	Height, ft	Side seam length including waist casing, in
1 (154–160)	102.2–105.8	1 (5'1"–5'3")	40 1/4–41 5/8
2 (162–168)	106.5–110.1	2 (5'4"–5'6")	41 7/8–43 3/8
3 (170–176)	110.8–114.4	3 (5'7"–5'9")	43 5/8–45
4 (178–184)	115–118.6	4 (5'10"–6'1")	45 1/4–46 3/4

# FINISHED HEM WIDTH FOR ALL HEIGHTS

Size	34	36	38	40	42	44	46	48	50	52
Width, cm	26	26.5	27.5	28	29	30	31	32	33	34
Width, in	10 1/4	10 3/8	10 7/8	11	11 3/8	11 3/4	12 1/4	12 5/8	13	13 3/8

# SUGGESTED FABRIC

To sew these pants, choose outerwear fabrics with the following properties:

- heavyweight or medium weight, non-stretch or low-stretch, breathable, water-repellent, windproof
- the fabric content can include natural fibers (cotton), artificial fibers (viscose), blends (cotton + polyester, viscose + polyester, etc.), and synthetics (polyester, polyester + elastane)
- the following fabrics are recommended: outerwear fabrics, dewspo, taslan, taffeta, Oxford, membrane fabrics.

The pants in the photo are made of outerwear fabric. The fabric is medium weight and has very little stretch. The fiber content is 100% polyester. The fabric weight is 280 g/m<sup>2</sup>.  
The pocket lining is 100% viscose.

# FABRIC AND NOTIONS REQUIREMENTS

1. Main fabric, 140 cm wide, with a directional print/nap, in meters:

Height, cm	Size				
	34-40	42-44	46	48-50	52
1 (154-160)	1.85	1.9	2	2.05	2.1
2 (162-168)	1.9	1.95	2.05	2.1	2.15
3 (170-176)	1.95	2.05	2.1	2.15	2.2
4 (178-184)	2	2.1	2.2	2.2	2.25

Main fabric, 55" wide, with a directional print/nap, in yards:

Height, ft	Size				
	34-40	42-44	46	48-50	52
1 (5'1"-5'3")	2	2 1/8	2 1/8	2 1/4	2 1/4
2 (5'4"-5'6")	2 1/8	2 1/8	2 1/4	2 1/4	2 3/8
3 (5'7"-5'9")	2 1/8	2 1/4	2 1/4	2 3/8	2 3/8
4 (5'10"-6'1")	2 1/8	2 1/4	2 3/8	2 3/8	2 1/2

Main fabric, 160 cm wide, with a directional print/nap, in meters:

Height, cm	Size					
	34-36	38	40	42-46	48-50	52
1 (154-160)	1.45	1.45	1.7	1.8	1.85	1.95
2 (162-168)	1.45	1.5	1.75	1.9	1.9	2
3 (170-176)	1.5	1.55	1.8	1.95	2	2.05
4 (178-184)	1.55	1.6	1.85	2.05	2.05	2.15

Main fabric, 63" wide, with a directional print/nap, in yards:

Height, ft	Size					
	34-36	38	40	42-46	48-50	52
1 (5'1"-5'3")	1 5/8	1 5/8	1 7/8	2	2	2 1/8
2 (5'4"-5'6")	1 5/8	1 5/8	1 7/8	2 1/8	2 1/8	2 1/8
3 (5'7"-5'9")	1 5/8	1 3/4	2	2 1/8	2 1/8	2 1/4
4 (5'10"-6'1")	1 3/4	1 3/4	2	2 1/4	2 1/4	2 3/8

2. Lining fabric, 140 cm (55") wide, for all heights:

Size	34-40	42-52
meters	0.35	0.4
yards	3/8	1/2

**IMPORTANT!** When purchasing fabric, please account for shrinkage and buy 5% more than required.

3. Lightweight knit or woven interfacing, 140 cm (55") wide, for all sizes in all heights — 0.25 m (1/4 yd)

4. Elastic for waist casing, 3 cm (1 1/8") wide, including seam allowances, for all heights:

Size	34	36	38	40	42	44	46	48	50	52
Length, cm	67	71	75	79	81.5	85.5	87.5	91.5	95.5	99.5
Length, in	26 3/8	28	29 1/2	31 1/8	32 1/8	33 5/8	34 1/2	36	37 5/8	39 1/8

5. Elastic cord, 3 mm in diameter, including seam allowances, for all heights, cm:

Size	34	36	38	40	42	44	46	48	50	52
For top edge binding	92	96	100	104	106.5	110.5	112.5	116.5	120.5	124.5
For hem casing (cut into 2 equal pieces)	110	113	116	119	122	126	130	134	138	142
Total	202	209	216	223	228.5	236.5	242.5	250.5	258.5	266.5

Elastic cord, 1/8" in diameter, including seam allowances, for all heights, inches:

Size	34	36	38	40	42	44	46	48	50	52
For top edge binding	36 1/4	37 3/4	39 3/8	41	41 7/8	43 1/2	44 1/4	45 7/8	47 1/2	49
For hem casing (cut into 2 equal pieces)	43 1/4	44 1/2	45 5/8	46 7/8	48	49 5/8	51 1/8	52 3/4	54 3/8	55 7/8
Total	79 1/2	82 1/4	85	87 7/8	89 7/8	93 1/8	95 3/8	98 5/8	101 7/8	104 7/8

- 6. Two zippers, 17 cm (6 3/4") long each, for all sizes in all heights
- 7. Four double-hole stoppers for the elastic cord
- 8. Knit piping tape — 5 m (5 1/2 yd)
- 9. Velcro tape, 2 cm (3/4") wide — 4 cm (1 5/8")
- 10. Matching thread — 5 spools (1 spool for the sewing machine + 4 spools for the overlocker)

# TOOLS AND EQUIPMENT

- sewing machine for construction
- overlocker for finishing raw edges. This may be replaced with a stretch overlock stitch or a zigzag stitch on the sewing machine (overlock or zigzag stitch width 2–3 mm, stitch length 2.5 mm)
- buttonhole foot for the sewing machine
- one-sided foot for the sewing machine to attach the piping
- elastic threader (may be replaced with a safety pin)
- loop turner.

# PATTERN PIECES LIST

---

## 1. From main fabric:

- back leg — cut 2
- center front leg — cut 2
- top side front leg — cut 2
- bottom side front leg — cut 2
- pocket bag — cut 2
- pocket bag facing — cut 2
- welt — cut 2
- pocket facing — cut 2
- patch pocket — cut 2
- patch pocket flap — cut 4
- waist facing — cut 2
- top edge binding — cut 2
- loop — cut 1 (2 pcs)

Additionally, cut the following pieces from the main fabric:

- 2×2 cm (3/4×3/4") square piece — to cover the elastic cord ends

Additionally, cut the following from interfacing:

- two strips, 5 cm (2") wide (length according to the pattern), to interface the pocket opening areas on the top side front leg pieces
- two strips, 3 cm (1 1/8") wide (length according to the pattern), to interface the top edge seam allowances of the patch pocket pieces
- four 3×3 cm (1 1/8×1 1/8") square pieces to interface the buttonhole areas on the back legs and bottom side front legs.

The interfacing strips should be cut on the straight grain (parallel to the selvedge).

## 2. From lining fabric:

- pocket bag — cut 2

**IMPORTANT!** Don't forget to transfer all pattern markings and notches onto the fabric.

## 3. From interfacing:

- patch pocket flap — cut 2
- welt — cut 2

# SEAM ALLOWANCES

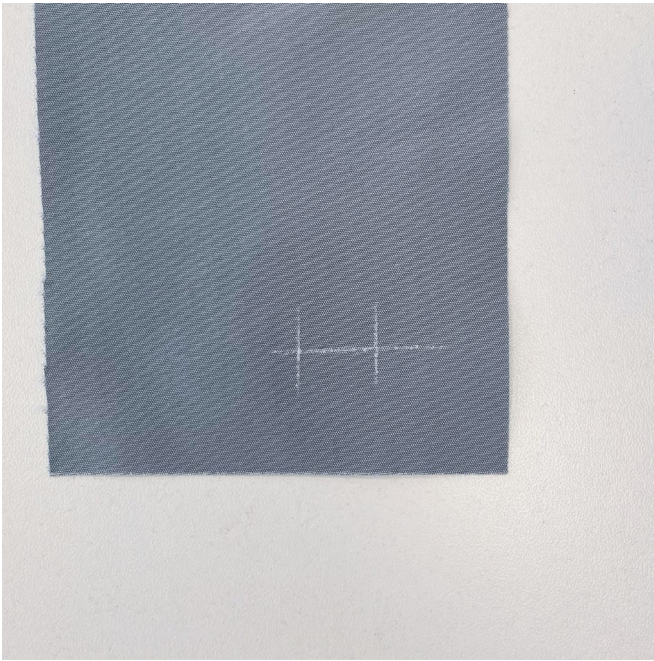
---

All pattern pieces include seam allowances as follows:

- garment hem allowance — 3 cm (1 1/8")
- patch pocket hem allowance — 2.5 cm (1")
- welt side seam allowances — 1.5 cm (5/8")
- all other edges — 1 cm (3/8")

Take this into account when laying out pattern pieces on the fabric.

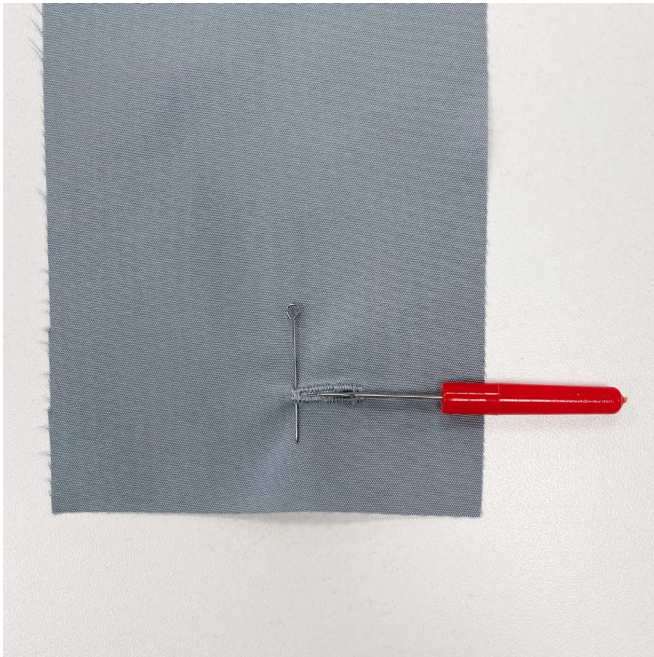




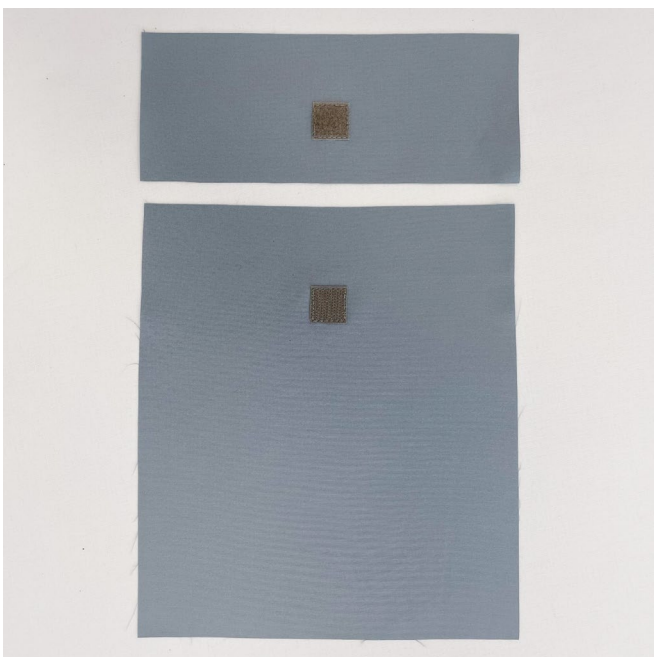
On the back leg and bottom side front leg pieces, mark the placement of buttonholes according to the pattern.

Machine-stitch the buttonholes using a buttonhole foot for the sewing machine.

**Important!** Make sure to sew a test buttonhole first on an interfaced scrap of the main fabric.



Insert a pin at the end of each buttonhole to protect the edge from being cut and then carefully cut the buttonholes open with a seam ripper.



Transfer the Velcro tape markings from the pattern to the right side of the patch pocket piece and interfaced flap piece (hereinafter referred to as the inner flap). Pin the Velcro tape pieces according to the markings.