

FROM THE FOUNDER OF THE #VIKISEWS BRAND

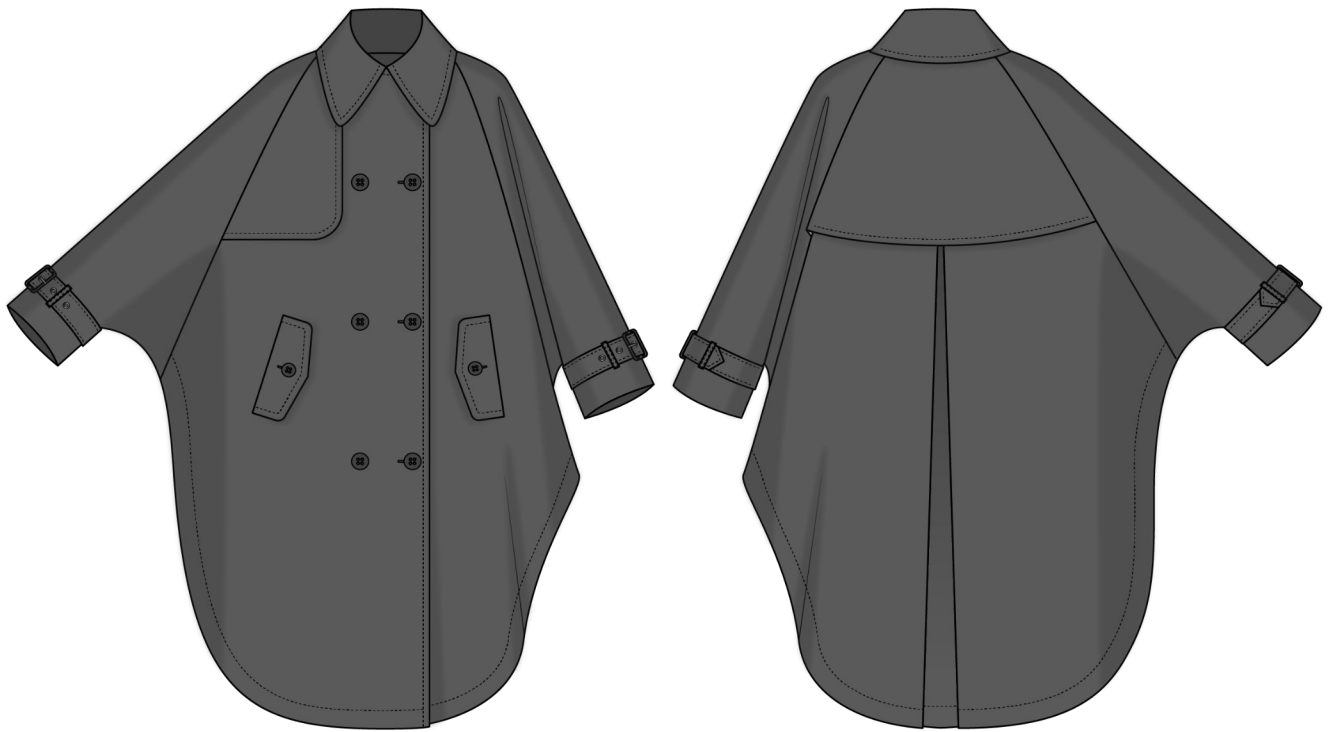


Back in 2016, when I was working on my first set of sewing instructions, I was trying to write them in such a way that even a complete beginner could easily understand and use them to create their very first garment. These instructions laid the foundation for the Vikisews brand, its vision and its mission. I wanted to create modern patterns with the utmost detailed and clear instructions.

Now, with each new collection we are constantly improving our instructions, amending them and adding more relevant details. By the time the final product reaches you, our drafters, correctors, and editors would have spent weeks perfecting every word and every photograph. If you compile a few of our instructions together, you will get a sewing manual that will assist you in sewing all kinds of garments at any difficulty level.

And I would be very happy if these instructions helped you to turn your hobby into a lifelong passion... Enjoy the process! Create your ultimate dream wardrobe! Wear your garments proudly for years to come!

If you have any questions, please contact us at info@vikisews.com — we are always there to help.



ARMANDE PATTERN DESCRIPTION

Armande is a loose-fitting coat with a straight cut. It features a storm flap on the right side of the front and a storm shield on the back. The front has flap pockets that close with buttons and buttonholes. There is a deep pleat in the center back seam. At the bottom of the full grown-on sleeve, there is a detachable sleeve tab threaded through loops and secured with a buckle. The coat features a turn-down collar with a separate collar stand and closes with a double-breasted button front closure. The hem is shaped and finished with a facing. The seams are topstitched. The coat has a free-hanging lining and is below-knee length.



IMPORTANT!

The contents of this pattern are copyright protected and belong exclusively to Vikisews. You may use Vikisews patterns for personal use. It is prohibited to share Vikisews patterns and instructions with third parties, as well as to publish patterns and instructions online for public access. **Non-compliance with the mentioned rules is a violation of the US copyright law and may result in civil liability and criminal prosecution.**

You may use Vikisews patterns for commercial use, to sew custom-made garments and/or create fashion collections, on the condition that the patterns are solely used in a manufacturing setting and are not further shared with individuals.

TOTAL EASE ALLOWANCE

The ease allowance for this pattern cannot be estimated due to a loose fit and non-typical design lines.

GARMENT LENGTH, SLEEVE LENGTH

Height, cm	Back length, cm	Sleeve length including shoulder width, cm
1 (154–160)	111	74
2 (162–168)	115	76
3 (170–176)	120	78
4 (178–184)	123	80

Height, ft	Back length, in	Sleeve length including shoulder width, in
1 (5'1"–5'3")	43 3/4	29 1/8
2 (5'4"–5'6")	45 1/4	29 7/8
3 (5'7"–5'9")	47 1/4	30 3/4
4 (5'10"–6'1")	48 3/8	31 1/2

SUGGESTED FABRIC

To sew this coat, choose coating fabrics with the following properties: medium weight, soft, non-stretch. The fiber content can include natural fibers or blends.

The following fabrics are recommended: wool coating, boiled wool, melton wool, cashmere.

For the lining, we recommend lining fabrics made of artificial fibers, synthetic fibers, or blends.

The coat in the photo is made of wool coating. The fabric is medium weight, soft, and non-stretch. The fiber content is 100% wool. The fabric weight is 450 g/m².

The fiber content of the lining is 100% viscose. The fabric weight is 100 g/m².

FABRIC AND NOTIONS REQUIREMENTS

1. Main fabric, 150 cm wide, with a directional print/nap, in meters:

Height, cm	Size		
	XS-S	M-L	XL
1 (154-160)	3.65	3.7	3.75
2 (162-168)	3.75	3.8	3.85
3 (170-176)	3.9	3.95	4
4 (178-184)	4	4.1	4.1

Main fabric, 59" wide, with a directional print/nap, in yards:

Height, ft	Size		
	XS-S	M-L	XL
1 (5'1"-5'3")	4	4	4 1/8
2 (5'4"-5'6")	4 1/8	4 1/8	4 1/4
3 (5'7"-5'9")	4 1/4	4 3/8	4 3/8
4 (5'10"-6'1")	4 3/8	4 1/2	4 1/2

2. Lining fabric, 140 cm wide, with a directional print, in meters:

Height, cm	Size		
	XS-S	M-L	XL
1 (154-160)	2.1	2.2	2.3
2 (162-168)	2.2	2.3	2.4
3 (170-176)	2.25	2.35	2.4
4 (178-184)	2.35	2.4	2.45

Lining fabric, 55" wide, with a directional print, in yards:

Height, ft	Size		
	XS-S	M-L	XL
1 (5'1"-5'3")	2 1/4	2 3/8	2 1/2
2 (5'4"-5'6")	2 3/8	2 1/2	2 5/8
3 (5'7"-5'9")	2 1/2	2 5/8	2 5/8
4 (5'10"-6'1")	2 5/8	2 5/8	2 5/8

IMPORTANT! When purchasing fabric, please account for shrinkage and buy 5% more than required.

3. Lightweight interfacing, knit or woven, 140 cm (55") wide, for all sizes in all heights — 1.6 m (1 3/4 yd)
4. Stitched bias-cut fusible stay tape with stitch reinforcement, 1.5 cm (5/8") wide — 7.4 m (8 1/8 yd)
5. Eight grommets
6. Two buckles, 4 cm (1 5/8") wide
7. Eleven buttons, 2.2–3 cm (7/8–1 1/8") in diameter
8. Matching thread — 4 spools (1 spool for the sewing machine + 3 spools for the overlocker)
9. Matching topstitching thread — 2 spools

TOOLS AND EQUIPMENT

- sewing machine for construction
- overlocker for finishing raw edges. This may be replaced with a stretch overlock stitch or a zigzag stitch on the sewing machine (overlock or zigzag stitch width 2–3 mm, stitch length 2.5 mm)
- buttonhole foot for the sewing machine
- one-sided foot for the sewing machine
- stitch-in-the-ditch foot for the sewing machine (optional)
- grommet press tool with a set of molds, hole puncher
- bias tape maker

PATTERN PIECES LIST

1. From main fabric:

- front — cut 2
- top front — cut 2
- storm flap — cut 1
- back — cut 2
- top back — cut 2
- storm shield — cut 1 on fold
- pleat inner panel — cut 1
- front facing — cut 2
- undercollar — cut 1 on fold
- upper collar — cut 1 on fold
- collar stand — cut 2
- back neck facing — cut 1 on fold
- front hem facing — cut 2
- back hem facing — cut 2
- top flap — cut 2
- welt — cut 2
- pocket facing — cut 2
- sleeve tab — cut 4
- sleeve tab loops — cut 1 (6 pieces)

2. From lining fabric:

- front lining — cut 2
- top front lining — cut 2
- back lining — cut 2
- top back lining — cut 2
- storm flap lining — cut 1
- storm shield lining — cut 1 on fold
- bottom flap — cut 2
- pocket top lining — cut 2
- pocket bottom lining — cut 2
- front facing binding — cut 2
- back pleat binding — cut 2
- front hem facing binding — cut 2
- back hem facing binding — cut 2
- pleat hem binding — cut 1
- pocket lining binding — cut 2

3. From interfacing:

- front facing — cut 2
- back neck facing — cut 1 on fold
- upper collar — cut 1 on fold
- collar stand — cut 2
- front hem facing — cut 2
- back hem facing — cut 2
- top flap — cut 2
- welt — cut 2
- sleeve tab — cut 2

Additionally, cut the following pieces from interfacing:

- neckline section on the back piece — cut 2
- top section on the top back piece — cut 2
- neckline section on the front piece — cut 2
- top section on the top front piece — cut 2
- bottom section on the top back piece — cut 2
- bottom section on the top front piece — cut 2
- pocket interfacing strip — cut 2

IMPORTANT! Transfer the interfacing sections from the pattern.

IMPORTANT! Don't forget to transfer all pattern markings and notches onto the fabric.

IMPORTANT! The pattern pieces that have the "face" inscription should be placed with the blank side onto the right side of fabric when cutting.

SEAM ALLOWANCES

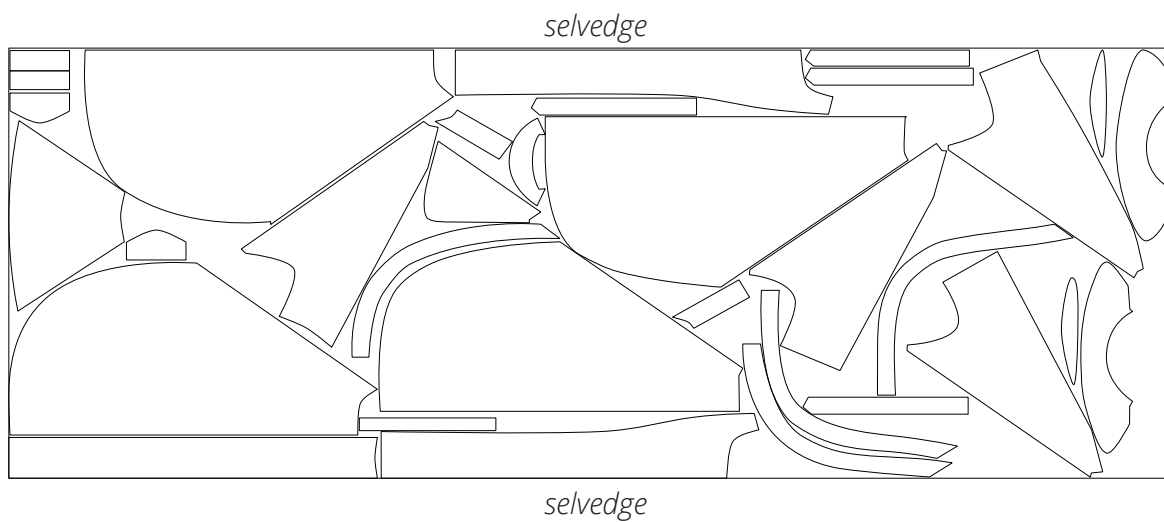
All pattern pieces include the seam allowances as follows:

- lining hem allowance — 1.5 cm (5/8")
- sleeve hem allowance — 4 cm (1 5/8")
- pocket lining curved edges — 1.5 cm (5/8")
- all other edges — 1 cm (3/8")

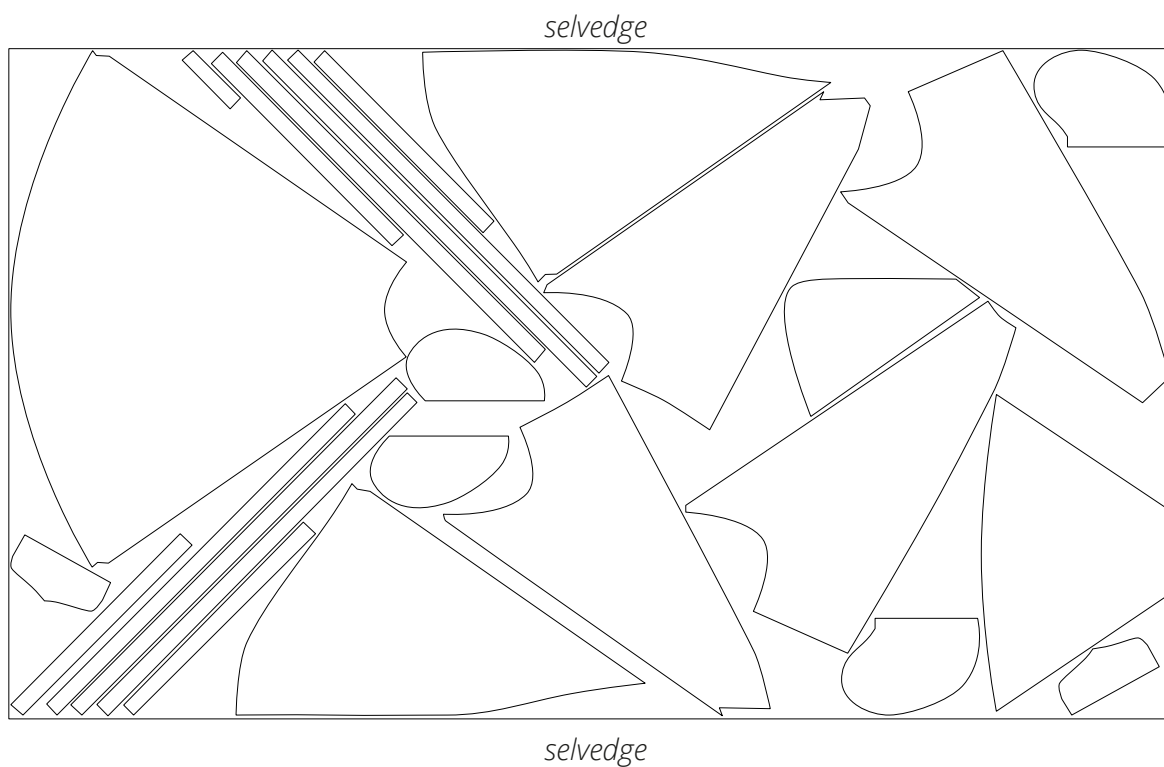
Take this into account when laying out pattern pieces on the fabric.

CUTTING LAYOUT

Main fabric, 150 cm (59") wide, with a directional print/nap,
cut on a single layer, for all sizes in all heights



Lining fabric, 140 cm (55") wide, with a directional print,
cut on a single layer, for all sizes in all heights





Before proceeding to the next step, fold the welt seam allowance out of the way and secure it with pins.

Place the flap right sides together with the front piece, the raw edge facing downwards. Align the line marked on the flap with the upper line of the pocket opening. Pin in place.



Stitch on the sewing machine, backstitching at the beginning and end of the seam.

Press the seam flat.



Turn the front piece wrong side up and check whether the two stitching lines are parallel. The distance between the two stitching lines should be equal to the width of the finished welt.