

FROM THE FOUNDER OF THE #VIKISEWS BRAND

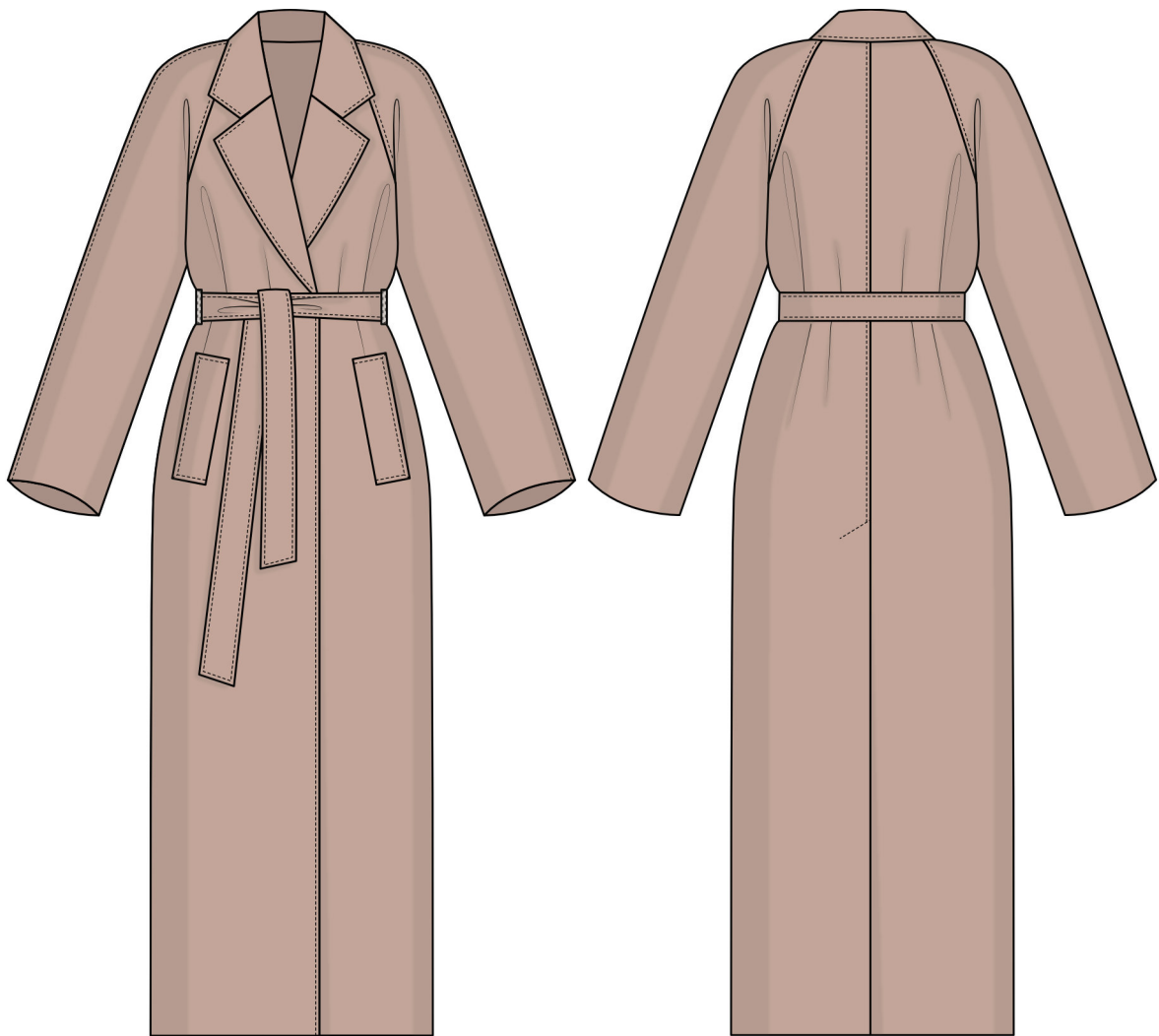


Back in 2016, when I was working on my first set of sewing instructions, I was trying to write them in such a way that even a complete beginner could easily understand and use them to create their very first garment. These instructions laid the foundation for the Vikisews brand, its vision and its mission. I wanted to create modern patterns with the utmost detailed and clear instructions.

Now, with each new collection we are constantly improving our instructions, amending them and adding more relevant details. By the time the final product reaches you, our drafters, correctors, and editors would have spent weeks perfecting every word and every photograph. If you compile a few of our instructions together, you will get a sewing manual that will assist you in sewing all kinds of garments at any difficulty level.

And I would be very happy if these instructions helped you to turn your hobby into a lifelong passion... Enjoy the process! Create your ultimate dream wardrobe! Wear your garments proudly for years to come!

If you have any questions, please contact us at info@vikisews.com — we are always there to help.



MYSARIA PATTERN DESCRIPTION

Mysaria is a loose-fitting, double-breasted, fully lined wrap coat with a straight cut and no closure. The front bust darts have been transferred to the neckline seam. The coat features a turned-down, notched collar with a collar stand and long, loose-fitting, two-piece raglan sleeves. There are welt pockets on the front and a vent in the center back seam. The detachable tie belt is secured with belt loops at the side seams. Mysaria is above-ankle length.



IMPORTANT!

The contents of this pattern are copyright protected and belong exclusively to Vikisews. You may use Vikisews patterns for personal use. It is prohibited to share Vikisews patterns and instructions with third parties, as well as to publish patterns and instructions online for public access. **Non-compliance with the mentioned rules is a violation of the US copyright law and may result in civil liability and criminal prosecution.**

You may use Vikisews patterns for commercial use, to sew custom-made garments and/or create fashion collections, on the condition that the patterns are solely used in a manufacturing setting and are not further shared with individuals.

TOTAL EASE ALLOWANCE

	Bust ease	Waistline ease	Hipline ease	Upper arm ease
cm	27.1–32.5	49.7–55.6	25.6–34.5	12–15.5
inches	10 5/8–12 3/4	19 5/8–21 7/8	10 1/8–13 5/8	4 3/4–6 1/8

GARMENT LENGTH, SLEEVE LENGTH

Height, cm	Back length, cm	Sleeve length including shoulder width, cm
1 (154–160)	124	76.8–79.4
2 (162–168)	129	78.7–81.3
3 (170–176)	134	80.6–83.2
4 (178–184)	139	82.2–85.1

Height, ft	Back length, in	Sleeve length including shoulder width, in
1 (5'1"–5'3")	48 7/8	30 1/4–31 1/4
2 (5'4"–5'6")	50 3/4	31–32
3 (5'7"–5'9")	52 3/4	31 3/4–32 3/4
4 (5'10"–6'1")	54 3/4	32 3/8–33 1/2

SUGGESTED FABRIC

To sew this coat, choose coating fabrics with the following properties: medium weight, soft, non-stretch or with very little stretch. The fiber content can include natural fibers, artificial fibers, blends, or synthetics.

The following fabrics are recommended: wool, alpaca, cashmere, mohair.

Choose plain-colored or mélange fabrics, with a short or medium pile or without pile.

Attention! We do not recommend heavyweight, structured fabrics. Also, we do not recommend using printed fabrics (such as check ones), since it will significantly increase fabric requirements and complicate the sewing process due to pattern matching.

For the lining, choose lining fabrics made of artificial fibers (viscose), blends (viscose + elastane, viscose + polyester), or synthetics (polyester, polyester + elastane).

The coat in the photo is made of a double-faced medium-pile coating fabric. The sewing techniques shown in the instructions are the same as for a regular single-sided fabric. The fabric is medium weight, soft, and low-stretch. The fiber content is 100% wool. The fabric weight is 540 g/m².
 The fiber content of the lining is 100% viscose. The fabric weight is 100 g/m².

FABRIC AND NOTIONS REQUIREMENTS

1. Main fabric, 150 cm wide, with a directional print/nap, in meters:

Height, cm	Size				
	XS	S	M	L	XL
1 (154–160)	3.35	3.85	3.9	4	4.05
2 (162–168)	3.45	3.95	4	4.05	4.1
3 (170–176)	3.6	4.05	4.15	4.15	4.2
4 (178–184)	3.7	4.2	4.25	4.3	4.3

Main fabric, 59" wide, with a directional print/nap, in yards:

Height, ft	Size				
	XS	S	M	L	XL
1 (5'1"–5'3")	3 5/8	4 1/4	4 1/4	4 3/8	4 3/8
2 (5'4"–5'6")	3 3/4	4 3/8	4 3/8	4 3/8	4 1/2
3 (5'7"–5'9")	3 7/8	4 3/8	4 1/2	4 1/2	4 5/8
4 (5'10"–6'1")	4	4 5/8	4 5/8	4 3/4	4 3/4

2. Lining fabric, 150 cm wide, with a directional print, in meters:

Height, cm	Size		
	XS	S	M–XL
1 (154–160)	1.95	2.05	2.5
2 (162–168)	2.05	2.15	2.6
3 (170–176)	2.1	2.2	2.7
4 (178–184)	2.2	2.25	2.8

Lining fabric, 59" wide, with a directional print, in yards:

Height, ft	Size		
	XS	S	M–XL
1 (5'1"–5'3")	2 1/8	2 1/4	2 3/4
2 (5'4"–5'6")	2 1/4	2 3/8	2 7/8
3 (5'7"–5'9")	2 1/4	2 3/8	3
4 (5'10"–6'1")	2 3/8	2 1/2	3

IMPORTANT! When purchasing fabric, please account for shrinkage and buy 5% more than required.

3. Lightweight knit or woven interfacing, up to 20–30 g/m², 140 cm (55") wide, for all heights:

Size	XS	S	M	L	XL
meters	2.35	2.45	2.5	2.6	2.65
yards	2 5/8	2 5/8	2 3/4	2 7/8	2 7/8

4. Stitched bias-cut fusible stay tape with stitch reinforcement, 1.5 cm (5/8") wide — 3.7 m (4 yd).

5. Stitched straight-grain fusible stay tape, 1 cm (3/8") wide — 0.5 m (1/2 yd).

6. Matching thread — 4 spools (1 spool for the sewing machine + 3 spools for the overlocker).

7. Matching topstitching thread (for example, Madeira No. 35) — 2 spools.

TOOLS AND EQUIPMENT

- sewing machine for construction
- overlocker for finishing raw edges. This may be replaced with a stretch overlock stitch or a zigzag stitch on the sewing machine (overlock or zigzag stitch width 2–3 mm, stitch length 2.5 mm)
- stitch-in-the-ditch foot for the sewing machine (optional)
- one-sided foot for the sewing machine

PATTERN PIECES LIST

1. From main fabric:

- front — cut 2
- back — cut 2
- back sleeve — cut 2
- front sleeve — cut 2
- undercollar — cut 1 on fold
- upper collar — cut 1 on fold
- collar stand — cut 2
- front facing — cut 2
- tie belt — cut 1
- welt — cut 2
- belt loops — cut 1 (makes 2 pieces).

Additionally, cut the following pieces from the main fabric:

- four strips, 3 cm (1 1/8") wide and 20 cm (7 7/8") long, to finish the bust darts. Cut the strips on the straight grain (parallel to the selvedge).

2. From lining fabric:

- front lining — cut 2
- back lining — cut 2
- front sleeve lining — cut 2
- back sleeve lining — cut 2
- pocket bottom lining — cut 2
- pocket top lining — cut 2.

IMPORTANT! Don't forget to transfer all pattern markings and notches onto the fabric.

3. From interfacing, 20–30 g/m²:

- upper collar — cut 1 on fold
- front facing — cut 2
- tie belt — cut 1
- collar stand — cut 2
- welt — cut 2.

Partially interface the following:

- front — 2 pieces (interface the top and bottom parts of the front outlined on the pattern)
- back — 2 pieces (interface the top and bottom parts of the back outlined on the pattern)
- front sleeve — 2 pieces (interface the sleeve cap and bottom part of the sleeve outlined on the pattern)
- back sleeve — 2 pieces (interface the sleeve cap and bottom part of the sleeve outlined on the pattern)
- vent extension — 2 pieces (apply a wider strip to the left-hand back piece and a narrower strip to the right-hand back piece)
- pocket opening area — 2 pieces.

SEAM ALLOWANCES

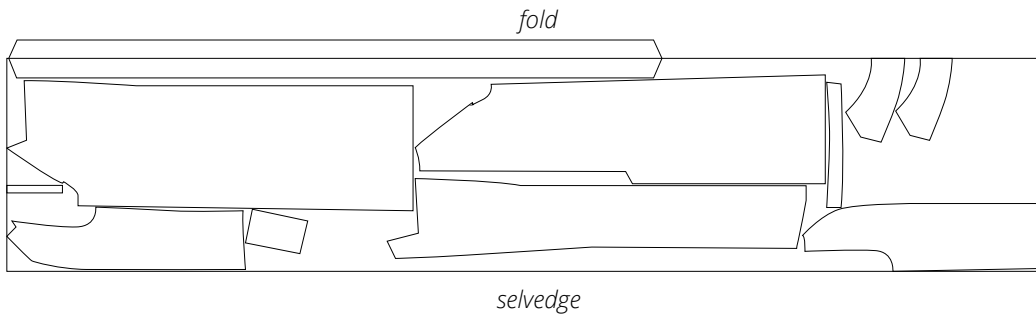
All pattern pieces include seam allowances as follows:

- garment hem allowance — 4 cm (1 5/8")
- sleeve hem allowance — 4 cm (1 5/8")
- pocket lining curved edges — 1.5 cm (5/8")
- center back seam allowance from the top edge to the beginning of the vent — 1.5 cm (5/8")
- overarm seam allowance on the front and back sleeves — 1.5 cm (5/8")
- armscye seam allowance on the front and back sleeves (from the neckline edge to the notch) — 1.5 cm (5/8")
- armscye seam allowance on the front and back (from the neckline edge to the notch) — 1.5 cm (5/8")
- all other edges — 1 cm (3/8").

Take this into account when laying out pattern pieces on the fabric.

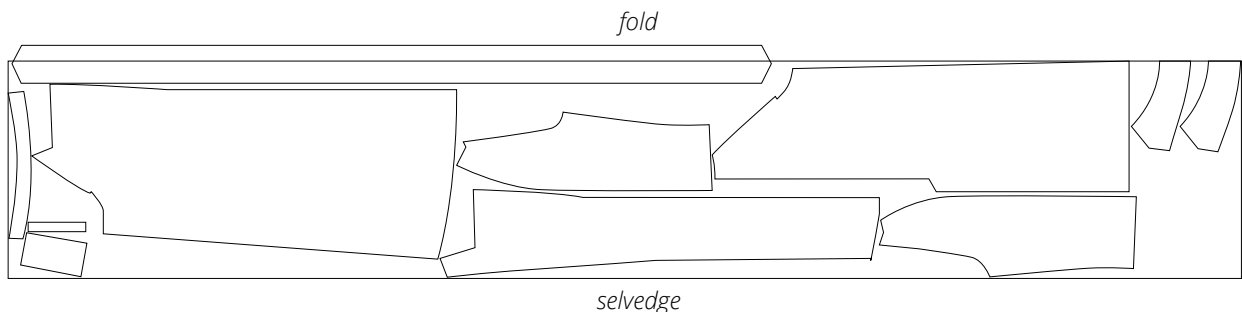
CUTTING LAYOUT

Main fabric, 150 cm (59") wide, with a directional print/nap,
cut on fold, for size XS in all heights



Attention! Cut one belt loop piece only. Cut the tie belt piece
on a single layer out of leftover fabric.

Main fabric, 150 cm (59") wide, with a directional print/nap,
cut on fold, for sizes S-XL in all heights



Attention! Cut one belt loop piece only. Cut the tie belt piece
on a single layer out of leftover fabric.



Machine-stitch the dart, backstitching at the beginning and end. Start stitching on the second strip, 1 cm (3/8") below the dart point, and then continue stitching along the entire length of the dart.



Press the seam flat.

Trim the seam allowances around the perimeter of both strips down to 1 cm (3/8").