

FROM THE FOUNDER OF THE #VIKISEWS BRAND

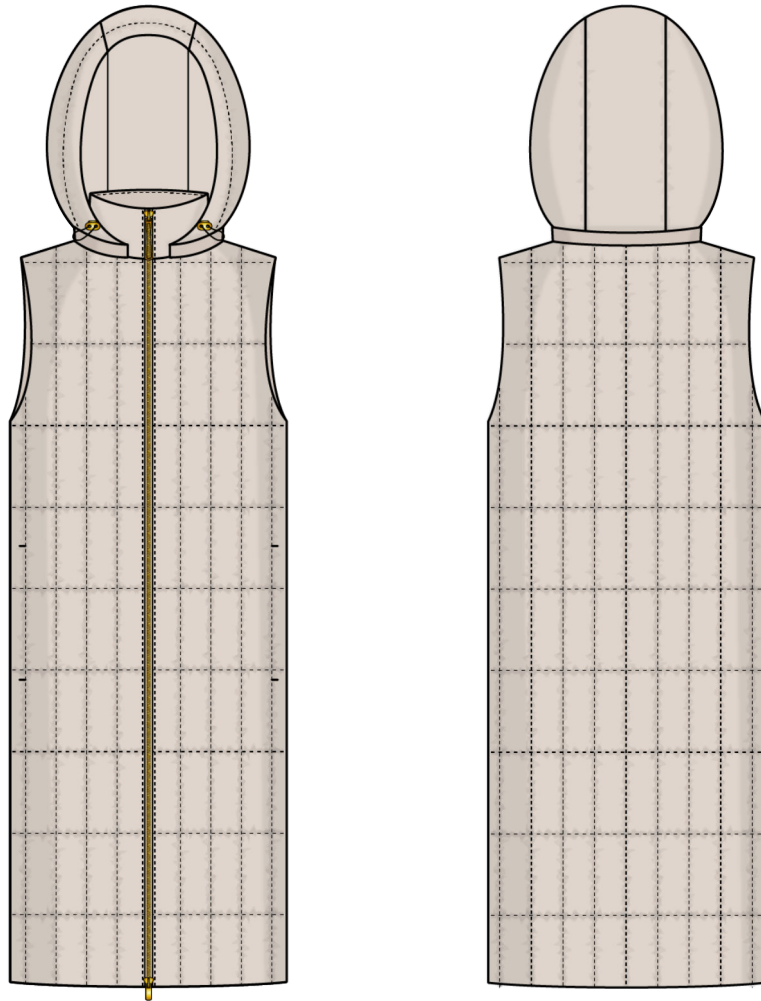


Back in 2016, when I was working on my first set of sewing instructions, I was trying to write them in such a way that even a complete beginner could easily understand and use them to create their very first garment. These instructions laid the foundation for the Vikisews brand, its vision and its mission. I wanted to create modern patterns with the utmost detailed and clear instructions.

Now, with each new collection we are constantly improving our instructions, amending them and adding more relevant details. By the time the final product reaches you, our drafters, correctors, and editors would have spent weeks perfecting every word and every photograph. If you compile a few of our instructions together, you will get a sewing manual that will assist you in sewing all kinds of garments at any difficulty level.

And I would be very happy if these instructions helped you to turn your hobby into a lifelong passion... Enjoy the process! Create your ultimate dream wardrobe! Wear your garments proudly for years to come!

If you have any questions, please contact us at info@vikisews.com — we are always there to help.



SHIAN PATTERN DESCRIPTION

Shian is a semi-fitted quilted puffer vest with a straight silhouette. At the top, the vest is fitted with bust and shoulder darts. The garment features a stand collar and pockets in the front princess seams. The zip-off detachable hood is finished with a casing and a drawstring cord with stoppers threaded through it. The vest fastens with a two-way separating zipper at the center front. Shian is fully lined and is below-knee length.



IMPORTANT!

The contents of this pattern are copyright protected and belong exclusively to Vikisews. You may use Vikisews patterns for personal use. It is prohibited to share Vikisews patterns and instructions with third parties, as well as to publish patterns and instructions online for public access. **Non-compliance with the mentioned rules is a violation of the US copyright law and may result in civil liability and criminal prosecution.**

You may use Vikisews patterns for commercial use, to sew custom-made garments and/or create fashion collections, on the condition that the patterns are solely used in a manufacturing setting and are not further shared with individuals.

TOTAL EASE ALLOWANCE

	Bust ease	Waistline ease	Hipline ease
cm	20.9–20.7	40.8	15
inches	8 1/4–8 1/8	16 1/8	5 7/8

GARMENT LENGTH

Height, cm	Back length, cm	Height, ft	Back length, in
1 (154–160)	98.5	1 (5'1"–5'3")	38 3/4
2 (162–168)	101.5	2 (5'4"–5'6")	40
3 (170–176)	104.5	3 (5'7"–5'9")	41 1/8
4 (178–184)	107.5	4 (5'10"–6'1")	42 3/8

SUGGESTED FABRIC

To sew this vest, choose outerwear fabrics with the following properties: medium weight, soft, non-stretch, waterproof, windproof. The fiber content can include natural fibers, artificial fibers, blends, or synthetics.

The following fabrics are recommended: raincoat fabrics, outerwear fabrics, dewspo, taslan, membrane fabrics, PU-coated polyester.

For the lining, the following fabrics are recommended: taffeta, sateen, twill, cupro, heat-reflective lining fabrics (Omni-Heat and similar).

Attention! We do not recommend stretchy knit fabrics.

The vest in the photo is made of raincoat fabric. The fabric is medium weight, soft, non-stretch. The fiber content is 100% polyester. The fabric weight is 80 g/m².

The lining is 100% polyester. The lining fabric weight is 90 g/m².

Alpolux 100 g/m² was used as the insulation. The fiber content is a blend of 15% wool and 85% microfiber.

FABRIC AND NOTIONS REQUIREMENTS

1. Main fabric, 150 cm wide, with a directional print/nap, in meters:

Height, cm	Size									
	34	36	38	40	42	44	46	48	50	52
1 (154–160)	1.95	2	2	2	2.1	2.1	2.15	2.2	2.35	2.35
2 (162–168)	2	2	2.05	2.05	2.15	2.15	2.2	2.25	2.4	2.4
3 (170–176)	2.05	2.05	2.05	2.1	2.15	2.2	2.25	2.3	2.4	2.45
4 (178–184)	2.05	2.1	2.1	2.1	2.25	2.25	2.25	2.3	2.45	2.45

Main fabric, 59" wide, with a directional print/nap, in yards:

Height, ft	Size					
	34–36	38–40	42–44	46	48	50–52
1 (5'1"–5'3")	2 1/8	2 1/8	2 1/4	2 3/8	2 3/8	2 5/8
2 (5'4"–5'6")	2 1/8	2 1/4	2 3/8	2 3/8	2 1/2	2 5/8
3 (5'7"–5'9")	2 1/4	2 1/4	2 3/8	2 1/2	2 1/2	2 5/8
4 (5'10"–6'1")	2 1/4	2 1/4	2 1/2	2 1/2	2 1/2	2 5/8

2. Lining fabric, 150 cm wide, with a directional print, in meters:

Height, cm	Size				
	34–44	46	48	50	52
1 (154–160)	1.05	1.05	1.1	1.15	1.15
2 (162–168)	1.05	1.1	1.1	1.15	1.2
3 (170–176)	1.1	1.1	1.15	1.15	1.2
4 (178–184)	1.1	1.1	1.15	1.2	1.2

Lining fabric, 59" wide, with a directional print, in yards:

Height, ft	Size		
	34–44	46	48–52
1 (5'1"–5'3")	1 1/8	1 1/8	1 1/4
2 (5'4"–5'6")	1 1/8	1 1/4	1 1/4
3 (5'7"–5'9")	1 1/4	1 1/4	1 1/4
4 (5'10"–6'1")	1 1/4	1 1/4	1 1/4

3. Alpolux insulation, 100 g/m², 150 cm wide, cut in one direction, in meters:

Height, cm	Size		
	34-42	44-48	50-52
1 (154-160)	1.4	1.55	1.8
2 (162-168)	1.45	1.6	1.85
3 (170-176)	1.45	1.6	1.9
4 (178-184)	1.5	1.65	1.95

Alpolux insulation, 100 g/m², 59" wide, cut in one direction, in yards:

Height, ft	Size		
	34-42	44-48	50-52
1 (5'1"-5'3")	1 1/2	1 3/4	2
2 (5'4"-5'6")	1 5/8	1 3/4	2
3 (5'7"-5'9")	1 5/8	1 3/4	2 1/8
4 (5'10"-6'1")	1 5/8	1 3/4	2 1/8

4. Elastic cord, 3 mm (1/8") wide, for all heights:

Size	34-40	42-52
cm	80	85
inches	31 1/2	33 1/2

IMPORTANT! When purchasing fabric, please account for shrinkage and buy 5% more than required.

5. One separating coil zipper (for the hood), cm:

Height, cm	Size				
	34-36	38	40-48	50	52
1-2 (154-168)	45	45	50	50	55
3-4 (170-184)	45	50	50	55	55

One separating coil zipper (for the hood), inches:

Height, ft	Size				
	34-36	38	40-48	50	52
1-2 (5'1"-5'6")	17 3/4	17 3/4	19 5/8	19 5/8	21 5/8
3-4 (5'7"-6'1")	17 3/4	19 5/8	19 5/8	21 5/8	21 5/8

6. One molded plastic separating zipper, 110 cm (43 1/4") long, for all sizes in all heights

7. Two metal zipper stoppers

8. Two metal grommets, 5 mm (1/4") in diameter

9. Two metal stoppers for the elastic cord

10. Matching thread — 1 spool

TOOLS AND EQUIPMENT

- sewing machine for construction
- one-sided foot for the sewing machine to attach the zipper
- pliers for installing zipper stoppers
- grommet press tool with a set of molds, hole puncher

PATTERN PIECES LIST

1. From main fabric:

- front — cut 2
- side front — cut 2
- back — cut 1 on fold
- outer hood side panel — cut 2
- inner hood side panel — cut 2
- outer hood center panel — cut 1
- inner hood center panel — cut 1
- hood casing — cut 1 on fold
- collar placket — cut 2
- outer stand collar — cut 1 on fold
- inner stand collar — cut 1 on fold
- front facing — cut 2
- back neck facing — cut 1 on fold
- front armscye facing — cut 2
- back armscye facing — cut 2
- front hem facing — cut 2
- back hem facing — cut 1 on fold
- pocket facing — cut 4

2. From lining fabric:

- front lining — cut 2
- back lining — cut 1 on fold
- pocket lining — cut 4

IMPORTANT! Don't forget to transfer all pattern markings and notches onto the fabric.

3. From insulation:

- front — cut 2
- side front — cut 2
- back — cut 1 on fold
- outer hood side panel — cut 2
- outer hood center panel — cut 1
- outer stand collar — cut 1 on fold

SEAM ALLOWANCES

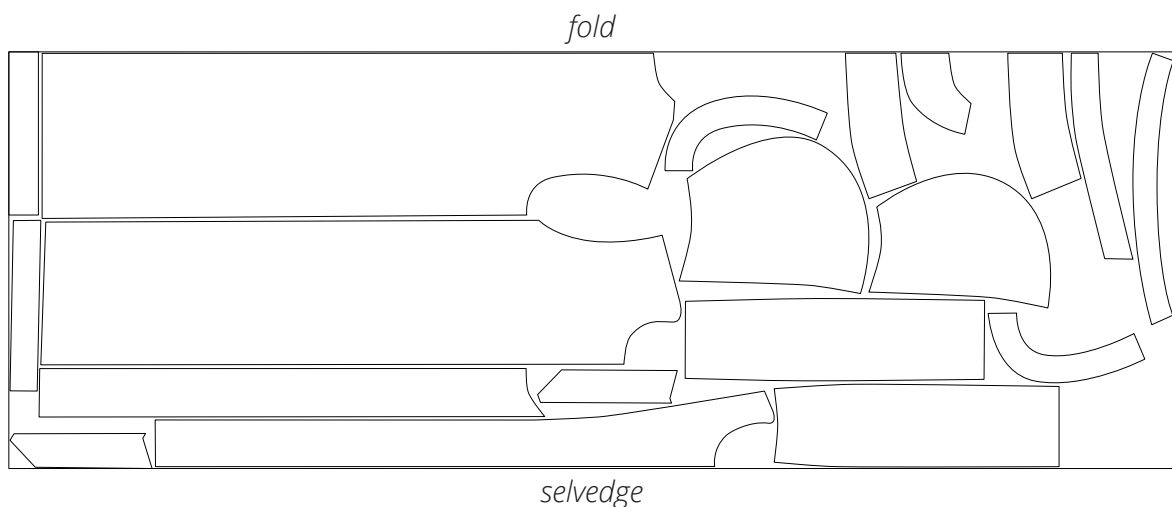
All pattern pieces include seam allowances as follows:

- all edges on the front, side front, and back pieces cut roughly — 1.5 cm (5/8")
- same edges after trimming and all other edges — 1 cm (3/8").

Take this into account when laying out pattern pieces on the fabric.

CUTTING LAYOUT

Main fabric, 150 cm (59") wide, with a directional print/nap, cut on fold,
for sizes 34–40 in all heights



Attention! Cut one each of the outer and inner hood center panel pieces.



Machine-sew the quilting lines on the side front piece following the above instructions.



Trim the rough seam allowances off the pattern pieces.

Place the paper pattern pieces onto the quilted garment pieces, matching the quilting lines.

Trim the garment pieces to match the corresponding pattern pieces.



Stitch all around the front piece 5–7 mm (1/4") away from the edge. Backstitch at the beginning and end of the seam.