

FROM THE FOUNDER OF THE #VIKISEWS BRAND



Back in 2016, when I was working on my first set of sewing instructions, I was trying to write them in such a way that even a complete beginner could easily understand and use them to create their very first garment. These instructions laid the foundation for the Vikisews brand, its vision and its mission. I wanted to create modern patterns with the utmost detailed and clear instructions.

Now, with each new collection we are constantly improving our instructions, amending them and adding more relevant details. By the time the final product reaches you, our drafters, correctors, and editors would have spent weeks perfecting every word and every photograph. If you compile a few of our instructions together, you will get a sewing manual that will assist you in sewing all kinds of garments at any difficulty level.

And I would be very happy if these instructions helped you to turn your hobby into a lifelong passion... Enjoy the process! Create your ultimate dream wardrobe! Wear your garments proudly for years to come!

If you have any questions, please contact us at info@vikisews.com — we are always there to help.



ENOLA PATTERN DESCRIPTION

Enola is a loose-fitting, straight-cut, fully lined trench coat. The front features bust darts transferred to the armscyes, a lined storm flap yoke with a button and buttonhole closure on the right-hand side, and welt pockets with sewn-in ends. The back has a lined flap yoke and a center seam ending with a vent. The long two-piece raglan sleeves feature epaulets at the top that are threaded through loops and secured with buttons and buttonholes. At the bottom of the sleeve, there is a detachable tab threaded through loops and secured with a buckle. The turn-down collar with a separate collar stand features a collar tab secured with a button and buttonhole. The garment has a double-breasted button front closure and a detachable belt secured with belt loops at the side seams and fastening with a buckle and grommets. There is decorative topstitching along all small pieces, as well as the collar, storm flap yoke, back yoke, center front edges, sleeve outer seams, garment hem, and sleeve hems. Enola is above-ankle length.



IMPORTANT!

The contents of this pattern are copyright protected and belong exclusively to Vikisews. You may use Vikisews patterns for personal use. It is prohibited to share Vikisews patterns and instructions with third parties, as well as to publish patterns and instructions online for public access. **Non-compliance with the mentioned rules is a violation of the US copyright law and may result in civil liability and criminal prosecution.**

You may use Vikisews patterns for commercial use, to sew custom-made garments and/or create fashion collections, on the condition that the patterns are solely used in a manufacturing setting and are not further shared with individuals.

TOTAL EASE ALLOWANCE

	Bust ease	Waistline ease	Hipline ease	Upper arm ease
cm	34–40.8	54–60.8	28–34.8	17.7–21.6
inches	13 3/8–16 1/8	21 1/4–23 7/8	11–13 3/4	7–8 1/2

GARMENT LENGTH, SLEEVE LENGTH

Height, cm	Back length, cm	Sleeve length including shoulder width, cm
1 (154–160)	126	74.8–75.7
2 (162–168)	130	76.8–77.7
3 (170–176)	134	78.8–79.7
4 (178–184)	138	80.8–81.7

Height, ft	Back length, in	Sleeve length including shoulder width, in
1 (5'1"–5'3")	49 5/8	29 1/2–29 3/4
2 (5'4"–5'6")	51 1/8	30 1/4–30 5/8
3 (5'7"–5'9")	52 3/4	31–31 3/8
4 (5'10"–6'1")	54 3/8	31 3/4–32 1/8

SUGGESTED FABRIC

To sew this trench coat, choose outerwear fabrics with the following properties: medium weight, structured, non-stretch or low-stretch. The fiber content can include natural fibers, artificial fibers, blends, or synthetics. The fabric may also be water-repellent and windproof.

The following fabrics are recommended: outerwear and raincoat fabrics, cotton gabardine, denim.

Attention! We do not recommend using soft, loop-textured, thin, sheer and/or stretchy fabrics.

For the lining, choose lining fabrics made of artificial fibers (viscose), blends (viscose + elastane, viscose + polyester), or synthetics (polyester, polyester + elastane).

The trench coat in the photo is made of raincoat fabric. The fabric is medium weight and low-stretch. The fiber content is a blend of 57% cotton and 43% tencel. The fabric weight is 180 g/m².

The lining is a blend of 55% polyester and 45% viscose. The weight is 100 g/m².

FABRIC AND NOTIONS REQUIREMENTS

1. Main fabric, 150 cm wide, with a directional print/nap, in meters:

Height, cm	Size									
	34	36	38	40	42	44	46	48	50	52
1 (154–160)	3.95	3.95	4	4.05	4.05	4.05	4.1	4.15	4.15	4.2
2 (162–168)	4.05	4.1	4.15	4.15	4.15	4.2	4.2	4.25	4.3	4.35
3 (170–176)	4.2	4.2	4.3	4.3	4.3	4.3	4.35	4.55	4.55	4.6
4 (178–184)	4.3	4.35	4.4	4.45	4.6	4.6	4.65	4.65	4.7	4.7

Main fabric, 59" wide, with a directional print/nap, in yards:

Height, ft	Size									
	34	36	38	40	42	44	46	48	50	52
1 (5'1"–5'3")	4 3/8	4 3/8	4 3/8	4 3/8	4 3/8	4 3/8	4 1/2	4 1/2	4 1/2	4 5/8
2 (5'4"–5'6")	4 3/8	4 1/2	4 1/2	4 1/2	4 1/2	4 5/8	4 5/8	4 5/8	4 3/4	4 3/4
3 (5'7"–5'9")	4 5/8	4 5/8	4 3/4	4 3/4	4 3/4	4 3/4	4 3/4	5	5	5
4 (5'10"–6'1")	4 3/4	4 3/4	4 3/4	4 7/8	5	5	5 1/8	5 1/8	5 1/8	5 1/8

2. Lining fabric, 150 cm wide, with a directional print, in meters:

Height, cm	Size								
	34	36–38	40	42	44	46	48	50	52
1 (154–160)	2.3	2.3	2.35	2.35	2.35	2.5	2.5	2.75	2.75
2 (162–168)	2.35	2.4	2.4	2.4	2.45	2.6	2.6	2.8	2.85
3 (170–176)	2.45	2.45	2.45	2.5	2.5	2.65	2.7	2.9	2.9
4 (178–184)	2.5	2.5	2.55	2.55	2.55	2.75	2.75	2.9	2.95

Lining fabric, 59" wide, with a directional print, in yards:

Height, ft	Size						
	34–38	40	42–44	46	48	50	52
1 (5'1"–5'3")	2 1/2	2 5/8	2 5/8	2 3/4	2 3/4	3	3
2 (5'4"–5'6")	2 5/8	2 5/8	2 5/8	2 7/8	2 7/8	3	3 1/8
3 (5'7"–5'9")	2 5/8	2 5/8	2 3/4	2 7/8	3	3 1/8	3 1/8
4 (5'10"–6'1")	2 3/4	2 3/4	2 3/4	3	3	3 1/8	3 1/4

IMPORTANT! When purchasing fabric, please account for shrinkage and buy 5% more than required.

3. Lightweight knit or woven interfacing, 30 g/m², 140 cm (55") wide, for all heights:

Size	34	36	38–40	42	44	46	48–50	52
meters	1.65	1.7	1.75	1.8	1.85	1.9	1.95	2
yards	1 3/4	1 7/8	1 7/8	2	2	2 1/8	2 1/8	2 1/8

4. Straight-grain fusible stay tape, 1 cm (3/8") wide — 0.7 m (3/4 yd)

5. Stitched bias-cut fusible stay tape with stitch reinforcement, 1.5 cm (5/8") wide — 6 m (6 1/2 yd)

6. Buttons:

- ten buttons, 2.2–2.5 cm (7/8–1") in diameter
- one button, 1.2 cm (1/2") in diameter
- eight backing buttons, 1 cm (3/8") in diameter

7. One 5 cm (2") wide (inner width) prong buckle for the belt

8. Two 3 cm (1 1/8") wide (inner width) slide buckles for the sleeve tabs

9. Nine grommets, 5 mm (1/4") in diameter

10. Matching thread — 4 spools (1 spool for the sewing machine + 3 spools for the overlocker)

11. Matching (or contrasting) topstitching thread (for example, Madeira No. 35) — 2 spools

TOOLS AND EQUIPMENT

- sewing machine for construction
- overlocker for finishing raw edges. This may be replaced with a stretch overlock stitch or a zigzag stitch on the sewing machine (overlock or zigzag stitch width 2–3 mm, stitch length 2.5 mm)
- buttonhole foot for the sewing machine
- stitch-in-the-ditch foot for the sewing machine (optional)
- one-sided foot for the sewing machine
- grommet press tool with a set of molds, hole puncher

PATTERN PIECES LIST

1. From main fabric:

- back — cut 2
- front — cut 2
- front sleeve — cut 2
- back sleeve — cut 2
- back yoke — cut 1 on fold
- front yoke — cut 1
- front facing — cut 2
- back neck facing — cut 1 on fold
- belt — cut 1
- upper collar — cut 1 on fold
- undercollar — cut 1 on fold
- collar stand — cut 2
- collar tab — cut 2
- sleeve tab — cut 4
- epaulet — cut 4
- welt — cut 2
- pocket facing — cut 2
- sleeve tab loop — cut 1 (4 pieces)
- epaulet loop — cut 1 (2 pieces)
- belt loop — cut 1 (2 pieces)

2. From lining fabric:

- front lining — cut 2
- back lining — cut 2
- front sleeve lining — cut 2
- back sleeve lining — cut 2
- back yoke — cut 1 on fold
- front yoke — cut 1
- pocket bottom lining — cut 2
- pocket top lining — cut 2

IMPORTANT! Don't forget to transfer all pattern markings and notches onto the fabric.

3. From interfacing:

- front facing — cut 2
- back neck facing — cut 1 on fold
- belt — cut 1
- upper collar — cut 1 on fold
- undercollar — cut 1 on fold
- collar stand — cut 2
- collar tab — cut 2
- sleeve tab — cut 4
- epaulet — cut 4
- welt — cut 2

Additionally, cut the following from interfacing:

- two strips, 7 cm (2 3/4") wide (length according to the pattern), to interface the welt pocket opening areas on the front pieces
- eight strips, 4 cm (1 5/8") wide (length according to the pattern), to interface the hem allowances on the front, back, and sleeve pieces
- one strip, 7 cm (2 3/4") wide (length according to the pattern), to interface the vent extension on the left back piece
- two 3×3 cm (1 1/8×1 1/8") square pieces to interface the buttonhole areas on the front yoke and front yoke lining pieces.

The interfacing strips should be cut on the straight grain (parallel to the selvedge).

SEAM ALLOWANCES

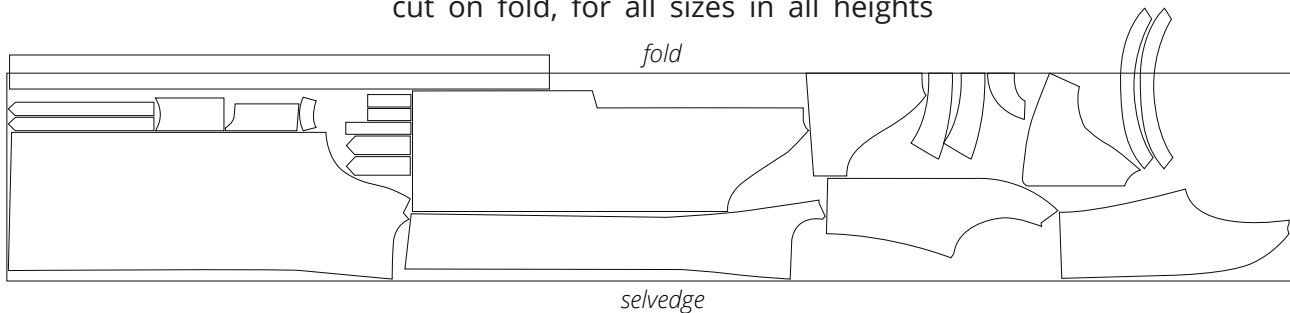
All pattern pieces include seam allowances as follows:

- garment hem allowance — 4 cm (1 5/8")
- sleeve hem allowance — 4 cm (1 5/8")
- pocket lining curved edges — 1.5 cm (5/8")
- all other edges — 1 cm (3/8").

Take this into account when laying out pattern pieces on the fabric.

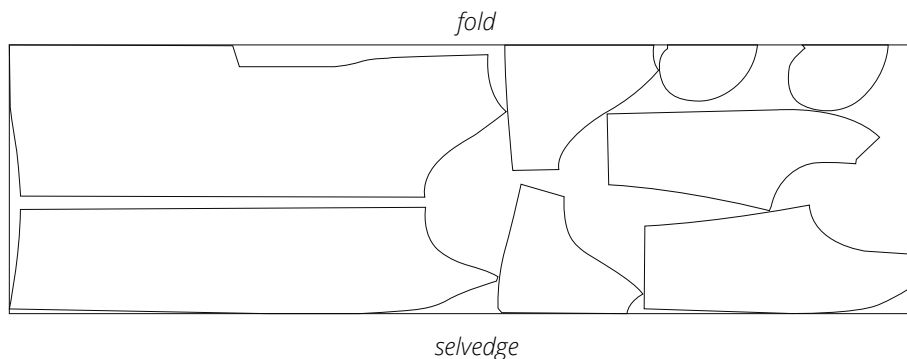
CUTTING LAYOUT

Main fabric, 150 cm (59") wide, with a directional print/nap, cut on fold, for all sizes in all heights



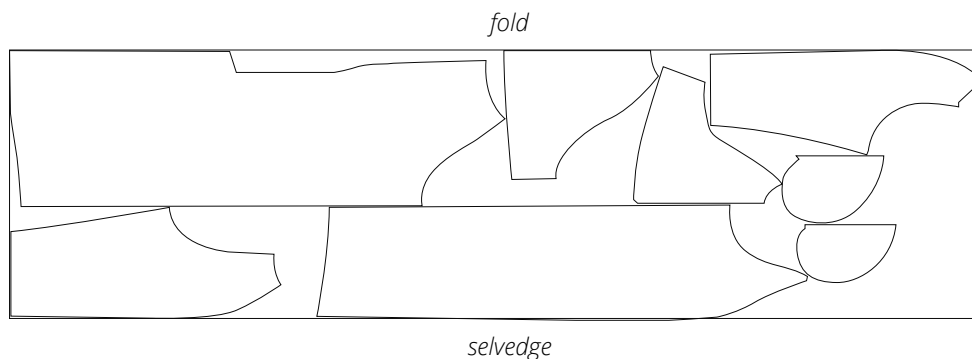
Attention! Cut one each of the front yoke, belt loop, sleeve tab loop, and epaulet loop pieces. Cut the belt and collar stand pieces on a single layer out of leftover fabric.

Lining fabric, 150 cm (59") wide, with a directional print, cut on fold, for sizes 34–44 in all heights



Attention! Cut one front yoke piece only.

Lining fabric, 150 cm (59") wide, with a directional print, cut on fold, for sizes 46–48 in all heights



Attention! Cut one front yoke piece only.



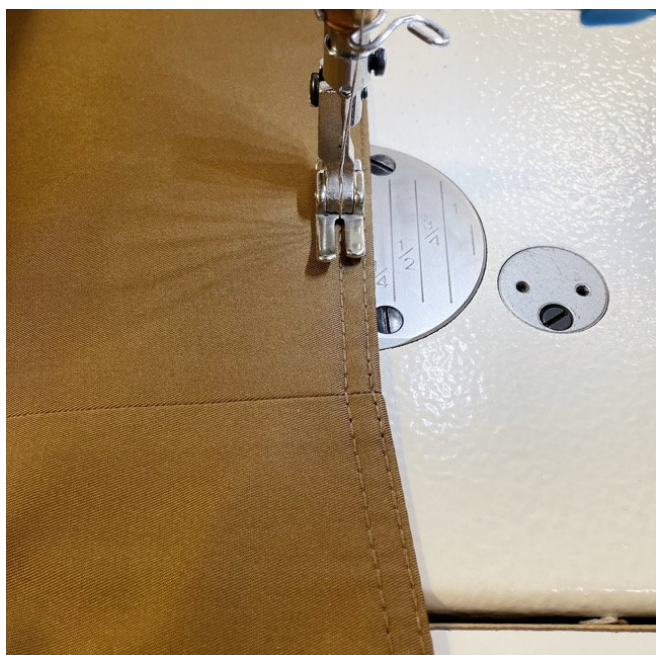
Place the assembled front yoke and back yoke right sides together and align the right-hand side edges on the main fabric and lining fabric parts, respectively. Pin, matching the bottom seams.

Stitch on the sewing machine, backstitching at the beginning and end of the seam.

Press the seam flat.

Press the seam allowances open.

Turn the assembled yoke right side out and press the bottom edge again, rolling the seam towards the lining.



Topstitch twice along the bottom and front edges of the yoke: at 1 mm (just next to) and 7 mm (just over 1/4") from the edge. Use topstitching thread.