

FROM THE FOUNDER OF THE #VIKISEWS BRAND

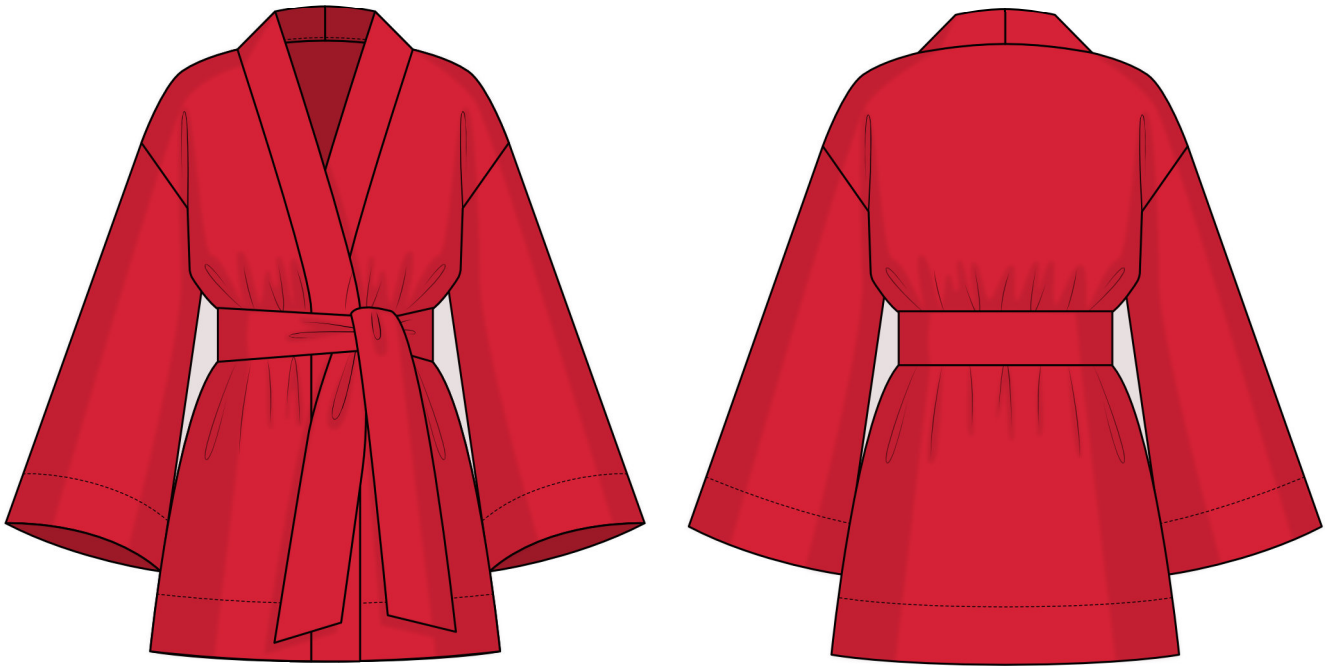


Back in 2016, when I was working on my first set of sewing instructions, I was trying to write them in such a way that even a complete beginner could easily understand and use them to create their very first garment. These instructions laid the foundation for the Vikisews brand, its vision and its mission. I wanted to create modern patterns with the utmost detailed and clear instructions.

Now, with each new collection we are constantly improving our instructions, amending them and adding more relevant details. By the time the final product reaches you, our drafters, correctors, and editors would have spent weeks perfecting every word and every photograph. If you compile a few of our instructions together, you will get a sewing manual that will assist you in sewing all kinds of garments at any difficulty level.

And I would be very happy if these instructions helped you to turn your hobby into a lifelong passion... Enjoy the process! Create your ultimate dream wardrobe! Wear your garments proudly for years to come!

If you have any questions, please contact us at info@vikisews.com — we are always there to help.



SAVANNAH PATTERN DESCRIPTION

Savannah is a straight-cut, loose-fitting wrap dress with an extended shoulder line. The center front edges, as well as the front and back neckline, are finished with a shaped placket. The dress has loose-fitting, set-in sleeves flared toward the bottom. The garment hem and sleeve hems are finished with wide facings. Savannah is mini-length and features a wide detachable tie belt.



IMPORTANT!

The contents of this pattern are copyright protected and belong exclusively to Vikisews. You may use Vikisews patterns for personal use. It is prohibited to share Vikisews patterns and instructions with third parties, as well as to publish patterns and instructions online for public access. **Non-compliance with the mentioned rules is a violation of the US copyright law and may result in civil liability and criminal prosecution.**

You may use Vikisews patterns for commercial use, to sew custom-made garments and/or create fashion collections, on the condition that the patterns are solely used in a manufacturing setting and are not further shared with individuals.

TOTAL EASE ALLOWANCE

	Bust ease	Waistline ease	Hipline ease	Upper arm ease
cm	41.6–42.9	49.7–49.9	31.3–33.9	17.2–18.9
inches	16 3/8–16 7/8	19 5/8	12 3/8–13 3/8	6 3/4–7 1/2

GARMENT LENGTH

Height, cm	Back length, cm	Sleeve length including shoulder width, cm
1 (154–160)	77.6–82.1	70.1–73
2 (162–168)	81.6–86.1	73.5–76.4
3 (170–176)	85.6–90.1	76.7–79.6
4 (178–184)	89.6–94.1	80–82.9

Height, ft	Back length, in	Sleeve length including shoulder width, in
1 (5'1"–5'3")	30 1/2–32 3/8	27 5/8–28 3/4
2 (5'4"–5'6")	32 1/8–33 7/8	28 7/8–30 1/8
3 (5'7"–5'9")	33 3/4–35 1/2	30 1/4–31 3/8
4 (5'10"–6'1")	35 1/4–37	31 1/2–32 5/8

SUGGESTED FABRIC

To sew this garment, choose dress-weight fabrics with the following properties:

- medium-weight, structured, non-stretch
- the fiber content can include natural fibers (cotton, linen, nettle), artificial fibers (viscose), and blends (polyester + linen, polyester + viscose, etc.)

Recommended fabrics: nettle, linen, cotton.

Attention! We do not recommend stretchy fabrics. The fabric should be structured.

The dress in the photos is made of linen. The fabric is medium weight, airy, textured, structured, non-stretch, and opaque. The fiber content is 100% linen. The fabric weight is 220 g/m².

FABRIC AND NOTIONS REQUIREMENTS

1. Main fabric, 140 cm wide, with a directional print/nap, 200–250 g/m², in meters:

Height, cm	Size						
	34	36–42	44	46	48	50	52
1 (154–160)	2.7	2.7	2.75	2.8	2.85	2.9	2.95
2 (162–168)	2.8	2.85	2.85	2.95	3	3	3.05
3 (170–176)	3	3	3	3	3.05	3.1	3.15
4 (178–184)	3.1	3.1	3.15	3.15	3.2	3.25	3.3

Main fabric, 55" wide, with a directional print/nap, 200–250 g/m², in yards:

Height, ft	Size					
	34	36–42	44	46	48–50	52
1 (5'1"–5'3")	3	3	3	3	3 1/8	3 1/4
2 (5'4"–5'6")	3	3 1/8	3 1/8	3 1/4	3 1/4	3 3/8
3 (5'7"–5'9")	3 1/4	3 1/4	3 1/4	3 1/4	3 3/8	3 1/2
4 (5'10"–6'1")	3 3/8	3 3/8	3 1/2	3 1/2	3 1/2	3 5/8

IMPORTANT! When purchasing fabric, please account for shrinkage and buy 5% more than required.

2. Stitched bias-cut fusible stay tape with stitch reinforcement, 1.5 cm (5/8") wide, for all heights:

Size	34–36	38–40	42–44	46–48	50–52
meters	7.3	7.4	7.6	7.8	8
yards	8	8 1/8	8 1/4	8 1/2	8 3/4

3. Matching thread – 5 spools (1 spool for the sewing machine + 4 spools for the overlocker).

TOOLS AND EQUIPMENT

- sewing machine for construction
- overlocker for finishing raw edges. It can be replaced with a stretch overlock stitch or a zigzag stitch on the sewing machine (overlock or zigzag stitch width 2–3 mm, stitch length 2.5 mm)
- stitch-in-the-ditch foot for the sewing machine (optional).

PATTERN PIECES LIST

From main fabric:

- front – cut 2
- back – cut 1 on fold
- sleeve – cut 2
- placket – cut 4
- front hem facing – cut 2
- back hem facing – cut 1 on fold
- sleeve hem facing – cut 2
- tie belt – cut 1.

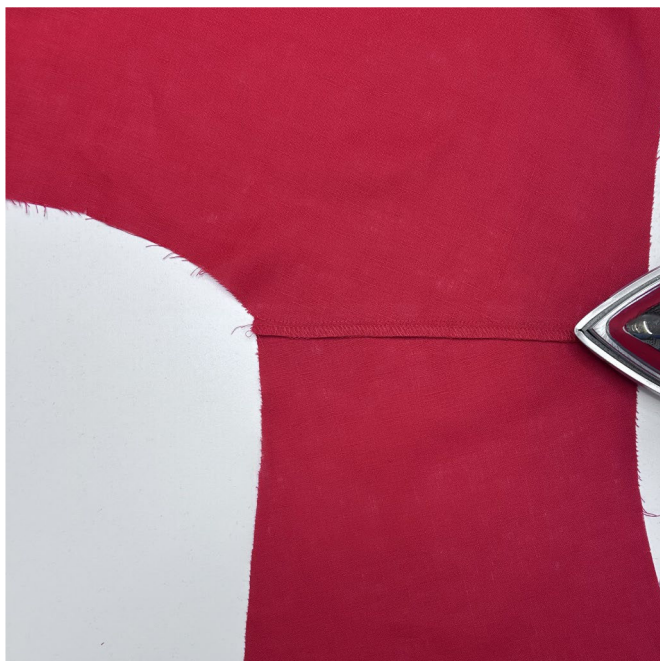
***IMPORTANT!** Don't forget to transfer all pattern markings and notches onto the fabric.*

SEAM ALLOWANCES

All pattern pieces include 1 cm (3/8") seam allowances.
Take this into account when laying out pattern pieces on the fabric.



Press the shoulder seam allowances toward the front.



Finish the seam allowances on the overlocker, keeping the back piece facing up. Press the seam.



Place the sleeve piece right sides together with the open armhole of the garment. Align and pin the edges, matching the notches.