

# FROM THE FOUNDER OF THE #VIKISEWS BRAND

---

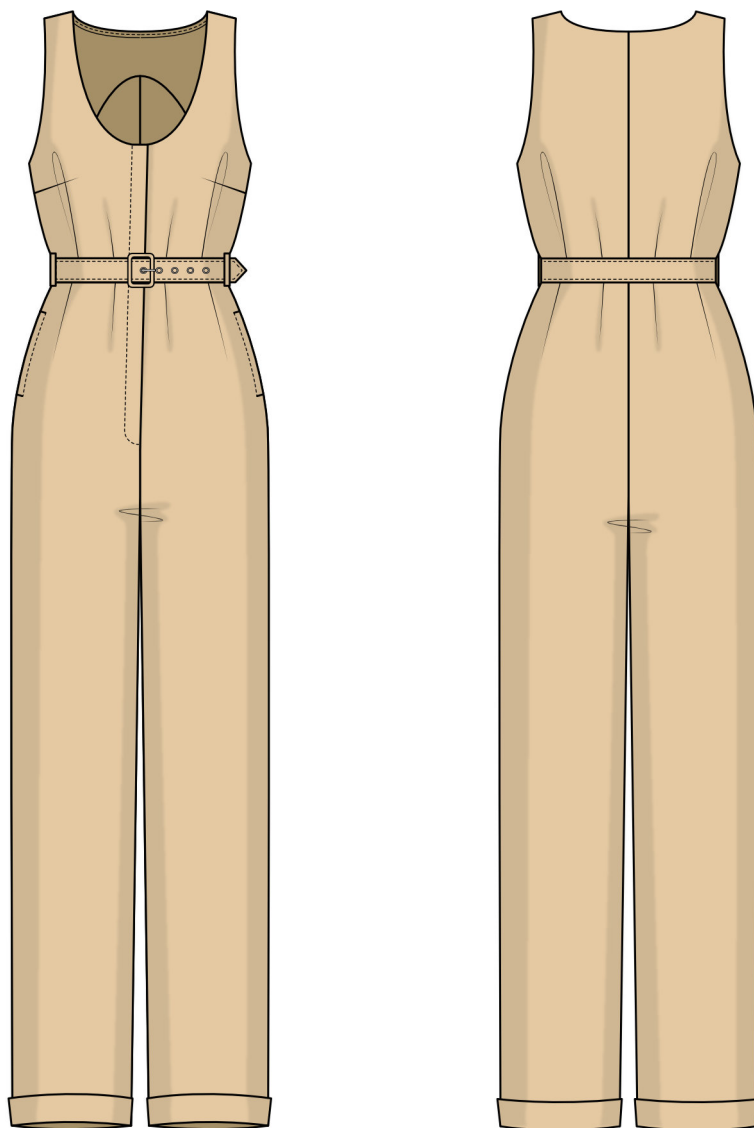


Back in 2016, when I was working on my first set of sewing instructions, I was trying to write them in such a way that even a complete beginner could easily understand and use them to create their very first garment. These instructions laid the foundation for the Vikisews brand, its vision and its mission. I wanted to create modern patterns with the utmost detailed and clear instructions.

Now, with each new collection we are constantly improving our instructions, amending them and adding more relevant details. By the time the final product reaches you, our drafters, correctors, and editors would have spent weeks perfecting every word and every photograph. If you compile a few of our instructions together, you will get a sewing manual that will assist you in sewing all kinds of garments at any difficulty level.

And I would be very happy if these instructions helped you to turn your hobby into a lifelong passion... Enjoy the process! Create your ultimate dream wardrobe! Wear your garments proudly for years to come!

If you have any questions, please contact us at [info@vikisews.com](mailto:info@vikisews.com) — we are always there to help.



## JOSIANE PATTERN DESCRIPTION

---

Josiane is a semi-fitted jumpsuit with a straight silhouette. It features a low round neckline. The neckline and armholes are finished with facing. The garment is shaped with bust darts at the front and has a center front snap closure. There are pockets in the side seams and belt loops for a detachable belt that features a buckle and grommets. The slightly tapered legs have a loose fit and a turn-up at the hem. Josiane is below-ankle length.



## IMPORTANT!

---

The contents of this pattern are copyright protected and belong exclusively to Vikisews. You may use Vikisews patterns for personal use. It is prohibited to share Vikisews patterns and instructions with third parties, as well as to publish patterns and instructions online for public access. **Non-compliance with the mentioned rules is a violation of the US copyright law and may result in civil liability and criminal prosecution.**

You may use Vikisews patterns for commercial use, to sew custom-made garments and/or create fashion collections, on the condition that the patterns are solely used in a manufacturing setting and are not further shared with individuals.

# TOTAL EASE ALLOWANCE

	Bust ease	Waistline ease	Hipline ease
cm	9.6–9.8	32.6–33.1	9–9.2
inches	3 3/4–3 7/8	12 7/8–13	3 1/2–3 5/8

# GARMENT LENGTH

Height, cm	Side seam length from waist down, cm	Height, ft	Side seam length from waist down, in
1 (154–160)	108.2–109.9	1 (5'1"–5'3")	42 5/8–43 1/4
2 (162–168)	112.5–114.2	2 (5'4"–5'6")	44 1/4–45
3 (170–176)	116.8–118.4	3 (5'7"–5'9")	46–46 5/8
4 (178–184)	121.1–122.7	4 (5'10"–6'1")	47 5/8–48 1/4

# FINISHED HEM WIDTH

Size	34	36	38	40	42	44	46	48	50	52
Width, cm	20.5–21	21.5–22	22.4–23	23.4–24	24.3–25	25.2–26	26.2–27	27–28	28–29	29–29.6
Width, in	8 1/8–8 1/4	8 1/2–8 5/8	8 7/8–9	9 1/4–9 1/2	9 5/8–9 7/8	9 7/8–10 1/4	10 3/8–10 5/8	10 5/8–11	11–11 3/8	11 3/8–11 5/8

# SUGGESTED FABRIC

To sew this jumpsuit, choose dress-weight fabrics with the following properties:

- medium weight, soft, non-stretch, structured, opaque. The fiber content can include natural fibers, artificial fibers, blends, and synthetics.

The following fabrics are recommended: denim, cotton, linen.

**Attention!** We do not recommend stretchy knit fabrics and lightweight sheer fabrics (chiffon, organza, stretch lace).

The jumpsuit in the photo is made of cotton. The fabric is heavyweight and structured. The fiber content is 100% cotton. The fabric weight is 205 g/m<sup>2</sup>.

# FABRIC AND NOTIONS REQUIREMENTS

1. Main fabric, 140 cm wide, with a directional print/nap, in meters:

Height, cm	Size						
	34-36	38	40	42	44	46-48	50-52
1 (154-160)	2.55	2.6	2.6	2.65	2.7	3.4	3.4
2 (162-168)	2.65	2.7	2.7	2.75	2.85	3.55	3.55
3 (170-176)	2.75	2.75	2.8	2.85	2.95	3.6	3.6
4 (178-184)	2.85	2.85	2.9	3.1	3.2	3.7	3.75

Main fabric, 55" wide, with a directional print/nap, in yards:

Height, ft	Size					
	34-36	38-40	42	44	46-48	50-52
1 (5'1"-5'3")	2 3/4	2 7/8	2 7/8	3	3 3/4	3 3/4
2 (5'4"-5'6")	2 7/8	3	3	3 1/8	3 7/8	3 7/8
3 (5'7"-5'9")	3	3	3 1/8	3 1/4	3 7/8	3 7/8
4 (5'10"-6'1")	3 1/8	3 1/8	3 3/8	3 1/2	4	4 1/8

2. Lightweight knit or woven interfacing, 140 cm (55") wide, cut in one direction, for all heights:

Size	34	36	38	40	42	44	46	48	50	52
meters	1	1.1	1.15	1.2	1.25	1.3	1.4	1.45	1.5	1.6
yards	1 1/8	1 1/4	1 1/4	1 1/4	1 3/8	1 3/8	1 1/2	1 5/8	1 5/8	1 3/4

3. Stitched bias-cut fusible stay tape with stitch reinforcement, 1.5 cm wide, in meters:

Height, cm	Size									
	34	36	38	40	42	44	46	48	50	52
1 (154-160)	1.9	1.9	1.95	1.95	2	2	2.05	2.1	2.1	2.15
2 (162-168)	1.9	1.95	1.95	2	2	2.05	2.05	2.1	2.15	2.15
3 (170-176)	1.9	1.95	1.95	2	2.05	2.05	2.1	2.15	2.15	2.15
4 (178-184)	1.95	1.95	2	2	2.05	2.1	2.1	2.15	2.15	2.2

Stitched bias-cut fusible stay tape with stitch reinforcement, 5/8" wide, in yards:

Height, ft	Size						
	34-40	42	44	46	48	50	52
1 (5'1"-5'3")	2 1/8	2 1/8	2 1/8	2 1/4	2 1/4	2 1/4	2 3/8
2 (5'4"-5'6")	2 1/8	2 1/8	2 1/4	2 1/4	2 1/4	2 3/8	2 3/8
3 (5'7"-5'9")	2 1/8	2 1/4	2 1/4	2 1/4	2 3/8	2 3/8	2 3/8
4 (5'10"-6'1")	2 1/8	2 1/4	2 1/4	2 1/4	2 3/8	2 3/8	2 3/8

***IMPORTANT!** When purchasing fabric, please account for shrinkage and buy 5% more than required.*

- 4. Stitched straight-grain fusible stay tape, 1 cm (3/8") wide — 45 cm (17 3/4").
- 5. Seven set-in snaps, 9.5 mm (3/8") in diameter.
- 6. Seven grommets, 0.5 cm (1/4") in diameter.
- 7. One 5 cm (2") wide prong buckle.
- 8. Matching thread — 5 spools (1 spool for the sewing machine + 4 spools for the overlocker).

# TOOLS AND EQUIPMENT

- sewing machine for construction
- overlocker for finishing raw edges. This may be replaced with a stretch overlock stitch or a zigzag stitch on the sewing machine (overlock or zigzag stitch width 2–3 mm, stitch length 2.5 mm)
- grommet press tool with a set of molds, hole puncher
- snap press tool with a set of molds (may be replaced with a hammer)

# PATTERN PIECES LIST

---

## 1. From main fabric:

- right front — cut 1
- left front — cut 1
- back — cut 2
- left front facing — cut 1
- right front facing — cut 1
- back facing — cut 1 on fold
- side pocket lining — cut 4
- belt loops — cut 1
- belt — cut 2

**IMPORTANT!** Don't forget to transfer all pattern markings and notches onto the fabric.

## Additionally, cut the following from interfacing:

- two strips (width and length according to the pattern) to interface the snap placket section on the right front and left front pieces
- fourteen 2×2 cm (3/4×3/4") square pieces to interface the snap placement on the front plackets.

The interfacing strips should be cut on the straight grain (parallel to the selvedge).

**IMPORTANT!** The pattern pieces with the word "face" printed on them should be cut from the right side of the fabric, i.e. with both the pattern piece and fabric facing up.

## 2. From interfacing:

- right front facing — cut 1
- left front facing — cut 1
- back facing — cut 1 on fold
- belt — cut 2

# SEAM ALLOWANCES

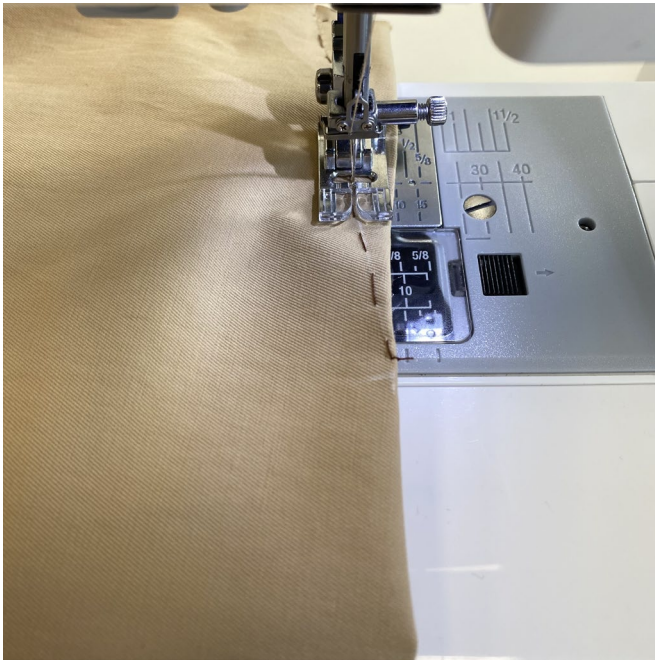
---

All pattern pieces include seam allowances as follows:

- garment hem allowance — 2 cm (3/4")
- all other edges — 1 cm (3/8").

Take this into account when laying out pattern pieces on the fabric.





Machine-stitch the darts. Backstitch at the raw edge and leave long thread tails at the dart point.



Tie the thread tails into a knot and hide them inside the dart bulk using a hand-sewing needle.



Press the dart flat.