

# FROM THE FOUNDER OF THE #VIKISEWS BRAND

---

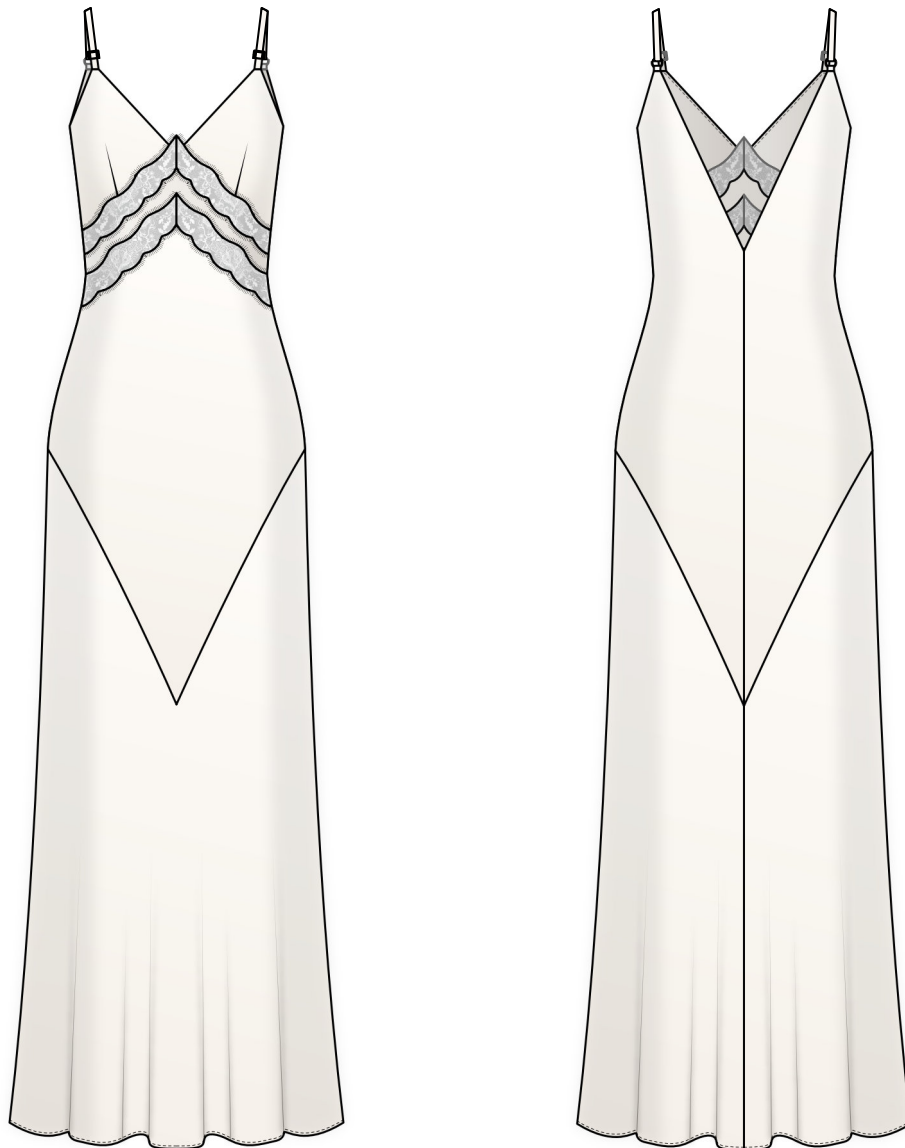


Back in 2016, when I was working on my first set of sewing instructions, I was trying to write them in such a way that even a complete beginner could easily understand and use them to create their very first garment. These instructions laid the foundation for the Vikisews brand, its vision and its mission. I wanted to create modern patterns with the utmost detailed and clear instructions.

Now, with each new collection we are constantly improving our instructions, amending them and adding more relevant details. By the time the final product reaches you, our drafters, correctors, and editors would have spent weeks perfecting every word and every photograph. If you compile a few of our instructions together, you will get a sewing manual that will assist you in sewing all kinds of garments at any difficulty level.

And I would be very happy if these instructions helped you to turn your hobby into a lifelong passion... Enjoy the process! Create your ultimate dream wardrobe! Wear your garments proudly for years to come!

If you have any questions, please contact us at [info@vikisews.com](mailto:info@vikisews.com) — we are always there to help.



## VIOLANTA PATTERN DESCRIPTION

---

Violanta is a close-fitting slip dress. The fitted silhouette is achieved with a bias-cut design and a center back seam. The double-layered top front is shaped with bust darts. The back has a deep V-neckline finished with a facing. The dress has adjustable straps. There are shaped lace inserts on the front and V-shaped design lines going from the hips downwards both on the front and back. Violanta is ankle-length.



## IMPORTANT!

---

The contents of this pattern are copyright protected and belong exclusively to Vikisews. You may use Vikisews patterns for personal use. It is prohibited to share Vikisews patterns and instructions with third parties, as well as to publish patterns and instructions online for public access. **Non-compliance with the mentioned rules is a violation of the US copyright law and may result in civil liability and criminal prosecution.**

You may use Vikisews patterns for commercial use, to sew custom-made garments and/or create fashion collections, on the condition that the patterns are solely used in a manufacturing setting and are not further shared with individuals.

# TOTAL EASE ALLOWANCE

	Bust ease (estimated)	Waistline ease (estimated)	Hipline ease (estimated)
cm	0.9–4.9	10.9–14.3	7.1–8.5
inches	3/8–1 7/8	4 1/4–5 5/8	2 3/4–3 3/8

# GARMENT LENGTH

Height, cm	Garment length from waist down, cm	Height, ft	Garment length from waist down, in
1 (154–160)	98	1 (5'1"–5'3")	38 5/8
2 (162–168)	102	2 (5'4"–5'6")	40 1/8
3 (170–176)	106	3 (5'7"–5'9")	41 3/4
4 (178–184)	110	4 (5'10"–6'1")	43 1/4

# SUGGESTED FABRIC

To sew this dress, choose dress-weight fabrics with the following properties: medium weight, soft, non-stretch or low-stretch. The fiber content can include natural fibers, artificial fibers, blends, or synthetics.

The following fabrics are recommended: sateen, natural or artificial silk, challis.

The dress in the photo is made of artificial silk. The fabric is soft, flexible, double-sided. The fiber content is 100% polyester. The fabric weight is 235 g/m<sup>2</sup>.

The additional fabric is lace trim. The fiber content is 100% polyester. The fabric weight is 200 g/m<sup>2</sup>.

# FABRIC AND NOTIONS REQUIREMENTS

1. Main fabric, 140 cm wide, with a directional print/nap, in meters:

Height, cm	Size				
	34-36	38-40	42-44	46-48	50-52
1 (154-160)	2.4	2.5	2.6	2.75	2.85
2 (162-168)	2.5	2.55	2.65	2.9	2.9
3 (170-176)	2.55	2.6	2.7	2.95	3
4 (178-184)	2.65	2.7	2.75	3	3.1

Main fabric, 150 cm wide, with a directional print/nap, in meters:

Height, cm	Size							
	34	36	38	40	42	44	46-48	50-52
1 (154-160)	2.15	2.2	2.25	2.35	2.4	2.45	2.55	2.65
2 (162-168)	2.25	2.25	2.3	2.4	2.4	2.5	2.65	2.7
3 (170-176)	2.3	2.35	2.35	2.4	2.45	2.5	2.75	2.8
4 (178-184)	2.35	2.4	2.4	2.45	2.5	2.55	2.8	2.95

Main fabric, 55" wide, with a directional print/nap, in yards:

Height, ft	Size				
	34-36	38-40	42-44	46-48	50-52
1 (5'1"-5'3")	2 5/8	2 3/4	2 7/8	3	3 1/8
2 (5'4"-5'6")	2 3/4	2 3/4	2 7/8	3 1/8	3 1/8
3 (5'7"-5'9")	2 3/4	2 7/8	3	3 1/4	3 1/4
4 (5'10"-6'1")	2 7/8	3	3	3 1/4	3 3/8

Main fabric, 59" wide, with a directional print/nap, in yards:

Height, ft	Size							
	34	36	38	40	42	44	46-48	50-52
1 (5'1"-5'3")	2 3/8	2 3/8	2 1/2	2 5/8	2 5/8	2 5/8	2 3/4	2 7/8
2 (5'4"-5'6")	2 1/2	2 1/2	2 1/2	2 5/8	2 5/8	2 3/4	2 7/8	3
3 (5'7"-5'9")	2 1/2	2 5/8	2 5/8	2 5/8	2 5/8	2 3/4	3	3
4 (5'10"-6'1")	2 5/8	2 5/8	2 5/8	2 5/8	2 3/4	2 3/4	3	3 1/4

**IMPORTANT!** When purchasing fabric, please account for shrinkage and buy 5% more than required.

2. Lace trim for the lace inserts, width according to the pattern, for all heights:

Size	34	36	38	40	42	44	46	48	50	52
cm	94	101	108	115	121	129	137	145	152	159
inches	37	39 3/4	42 1/2	45 1/4	47 5/8	50 3/4	53 7/8	57 1/8	59 7/8	62 5/8

3. Clear elastic, 2 cm (3/4") wide, for all sizes in all heights — 5 cm (2")

4. Lightweight interfacing for the center corner at the top edge of the bottom front piece (estimated) — 5×5 cm (2×2")

5. One set of accessories for straps: 2 sliders and 2 rings

6. Matching thread — 4 spools (1 spool for the sewing machine + 3 spools for the overlocker)

## TOOLS AND EQUIPMENT

- sewing machine for construction
- overlocker for finishing raw edges. It can be replaced with a stretch overlock stitch or a zigzag stitch on the sewing machine (overlock or zigzag stitch width 2–3 mm, stitch length 2.5 mm).

## PATTERN PIECES LIST

### 1. From main fabric:

- top front — cut 4
- front insert — cut 1
- front — cut 1
- back — cut 2
- back facing — cut 1
- strap — cut 2
- bottom front (part 1) — cut 1
- bottom front (part 2) — cut 1
- bottom back — cut 2

### 2. From additional fabric (lace):

- upper lace insert — cut 2
- lower lace insert — cut 2

**IMPORTANT!** Don't forget to transfer all pattern markings and notches onto the fabric.

### Cut the following from interfacing:

- one 3×3 cm (1 1/8×1 1/8") square piece to interface the center corner at the top edge of the bottom front piece.

# SEAM ALLOWANCES

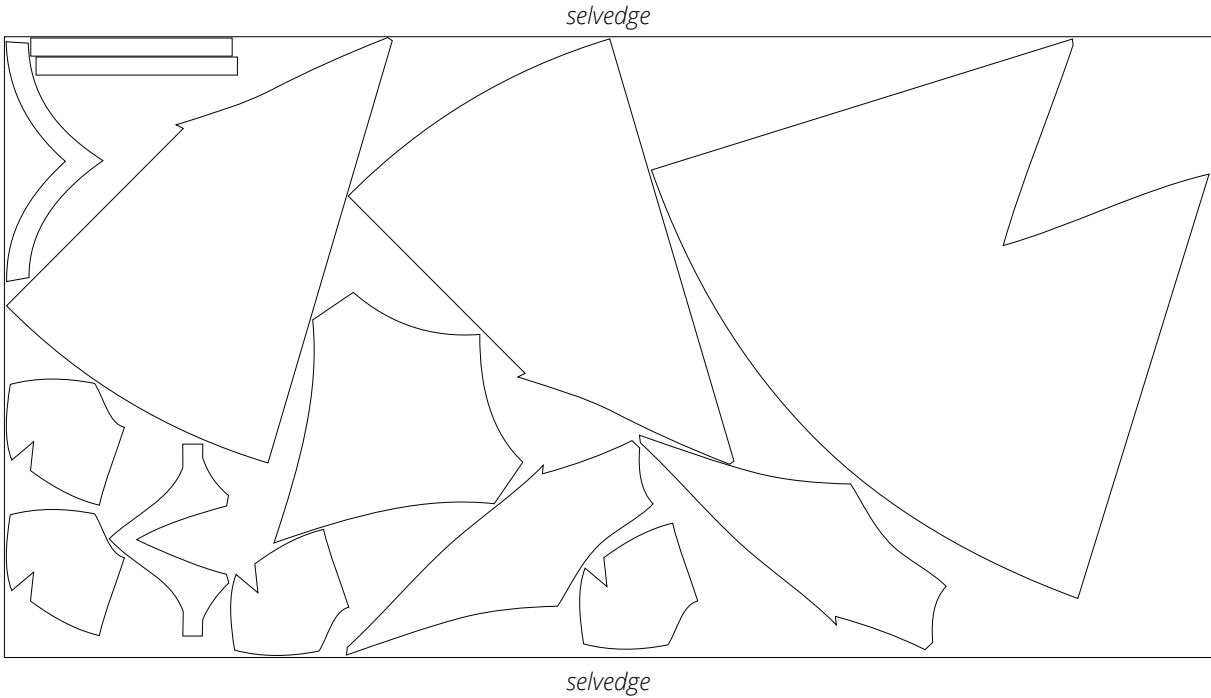
---

All pattern pieces include 1 cm (3/8") seam allowances.  
Take this into account when laying out pattern pieces on the fabric.

# CUTTING LAYOUT

---

Main fabric, 140 cm (55") wide, with a directional print/nap,  
cut on a single layer, for sizes 34-44 in all heights







Overlock the seam allowances, with the front piece facing up.

Press the seam flat.



Using a latch hook or a hand-sewing needle, hide the thread tails inside the seam allowance.



Press the seam allowance towards the bottom front.