

FROM THE FOUNDER OF THE #VIKISEWS BRAND



Back in 2016, when I was working on my first set of sewing instructions, I was trying to write them in such a way that even a complete beginner could easily understand and use them to create their very first garment. These instructions laid the foundation for the Vikisews brand, its vision and its mission. I wanted to create modern patterns with the utmost detailed and clear instructions.

Now, with each new collection we are constantly improving our instructions, amending them and adding more relevant details. By the time the final product reaches you, our drafters, correctors, and editors would have spent weeks perfecting every word and every photograph. If you compile a few of our instructions together, you will get a sewing manual that will assist you in sewing all kinds of garments at any difficulty level.

And I would be very happy if these instructions helped you to turn your hobby into a lifelong passion... Enjoy the process! Create your ultimate dream wardrobe! Wear your garments proudly for years to come!

If you have any questions, please contact us at info@vikisews.com — we are always there to help.



MARIELLE PATTERN DESCRIPTION

Marielle is a fully lined dress with an accentuated waist and a shaped waist seam. The close-fitting corset bodice features princess seams stiffened with rigilene boning at the front and back. The voluminous skirt is gathered at the top. The dress has a deep square neckline and fastens with an invisible zipper in the center back seam. Marielle is above-knee length.



IMPORTANT!

The contents of this pattern are copyright protected and belong exclusively to Vikisews. You may use Vikisews patterns for personal use. It is prohibited to share Vikisews patterns and instructions with third parties, as well as to publish patterns and instructions online for public access. **Non-compliance with the mentioned rules is a violation of the US copyright law and may result in civil liability and criminal prosecution.**

You may use Vikisews patterns for commercial use, to sew custom-made garments and/or create fashion collections, on the condition that the patterns are solely used in a manufacturing setting and are not further shared with individuals.

TOTAL EASE ALLOWANCE

	Bust ease	Waistline ease	Hipline ease
cm	4.3–5	2	116.8–172.9
inches	1 3/4–2	3/4	46–68 1/8

GARMENT LENGTH

Height, cm	Back length from waist down, cm	Height, ft	Back length from waist down, in
1 (154–160)	41.7–42.8	1 (5'1"–5'3")	16 3/8–16 7/8
2 (162–168)	44.7–45.8	2 (5'4"–5'6")	17 5/8–18
3 (170–176)	47.7–48.8	3 (5'7"–5'9")	18 3/4–19 1/4
4 (178–184)	50.7–51.8	4 (5'10"–6'1")	20–20 3/8

SUGGESTED FABRIC

To sew this dress, choose dress-weight fabrics with the following properties: medium weight, structured, non-stretch. The fiber content can include natural fibers, artificial fibers, blends, or synthetics.

The following fabrics are recommended: matte satin (Peau de Soie), taffeta, jacquard.

Attention! We do not recommend lightweight, soft, stretchy fabrics (chiffon, organza, stretch lace).

For the lining, we recommend lining fabrics made of artificial fibers, synthetic fibers, or blends.

The dress in the photo is made of matte satin (Peau de Soie). The fabric is medium weight, structured, and non-stretch. The fiber content is 100% polyester. The fabric weight is 170 g/m².

The fiber content of the lining is 100% viscose. The fabric weight is 50 g/m².

FABRIC AND NOTIONS REQUIREMENTS

1. Main fabric, 140 cm wide, with a directional print/nap, in meters:

Height, cm	Size									
	34	36	38	40	42	44	46	48	50	52
1 (154–160)	1.3	1.35	1.4	1.5	1.55	1.6	1.65	1.7	1.8	1.85
2 (162–168)	1.35	1.4	1.4	1.5	1.55	1.6	1.7	1.75	1.8	1.85
3 (170–176)	1.45	1.5	1.55	1.6	1.6	1.65	1.7	1.75	1.8	1.85
4 (178–184)	1.55	1.6	1.65	1.65	1.7	1.75	1.75	1.75	1.8	1.85

Main fabric, 55" wide, with a directional print/nap, in yards:

Height, ft	Size							
	34	36	38	40	42–44	46	48	50–52
1 (5'1"–5'3")	1 3/8	1 1/2	1 1/2	1 5/8	1 3/4	1 3/4	1 7/8	2
2 (5'4"–5'6")	1 1/2	1 1/2	1 1/2	1 5/8	1 3/4	1 7/8	1 7/8	2
3 (5'7"–5'9")	1 5/8	1 5/8	1 3/4	1 3/4	1 3/4	1 7/8	1 7/8	2
4 (5'10"–6'1")	1 3/4	1 3/4	1 3/4	1 3/4	1 7/8	1 7/8	1 7/8	2

2. Lining fabric, 140 cm wide, with a directional print, in meters:

Height, cm	Size									
	34	36	38	40	42	44	46	48	50	52
1 (154–160)	0.9	0.9	0.9	0.95	1	1.1	1.1	1.1	1.15	1.2
2 (162–168)	0.95	0.95	1	1	1.1	1.1	1.15	1.2	1.2	1.25
3 (170–176)	1	1.1	1.1	1.1	1.1	1.15	1.15	1.2	1.25	1.25
4 (178–184)	1	1.1	1.1	1.1	1.15	1.15	1.2	1.25	1.25	1.3

Lining fabric, 55" wide, with a directional print, in yards:

Height, ft	Size							
	34	36	38–40	42	44–46	48	50	52
1 (5'1"–5'3")	1	1	1	1 1/8	1 1/4	1 1/4	1 1/4	1 1/4
2 (5'4"–5'6")	1	1	1 1/8	1 1/4	1 1/4	1 1/4	1 1/4	1 3/8
3 (5'7"–5'9")	1 1/8	1 1/4	1 1/4	1 1/4	1 1/4	1 1/4	1 3/8	1 3/8
4 (5'10"–6'1")	1 1/8	1 1/4	1 1/4	1 1/4	1 1/4	1 3/8	1 3/8	1 3/8

IMPORTANT! When purchasing fabric, please account for shrinkage and buy 5% more than required.

3. Stitched straight-grain fusible stay tape, 1 cm (3/8") wide — 4.4 m (4 3/4 yd)
4. Stitch-reinforced lightweight interfacing — 1.2 m (1 1/4 yd)
5. One invisible zipper, 55 cm (21 5/8") long, for all sizes in all heights
6. Rigilene boning, 8 mm (just under 3/8") wide — 4.1 m (4 1/2 yd)
7. Matching thread — 4 spools (1 spool for the sewing machine + 3 spools for the overlocker)

TOOLS AND EQUIPMENT

- sewing machine for construction
- stitch-in-the-ditch foot for the sewing machine (optional)
- invisible zipper foot for the sewing machine
- one-sided foot for the sewing machine
- overlocker for finishing raw edges. This may be replaced with a stretch overlock stitch or a zigzag stitch on the sewing machine (overlock or zigzag stitch width 2–3 mm, stitch length 2.5 mm)
- lighter or matches for melting the rigilene boning

PATTERN PIECES LIST

1. From main fabric:

- 1st front bodice panel — cut 1
- 2nd front bodice panel — cut 2
- 3rd front bodice panel — cut 2
- 4th front bodice panel — cut 2
- 1st back bodice panel — cut 2
- 2nd back bodice panel — cut 2
- 3rd back bodice panel — cut 2
- 4th back bodice panel — cut 2
- front skirt — cut 1 on fold
- back skirt — cut 2

2. From lining fabric:

- center front bodice lining — cut 1 on fold
- 3rd front bodice panel — cut 2
- 4th front bodice panel — cut 2
- 1st back bodice panel — cut 2
- 2nd back bodice panel — cut 2
- side back bodice lining — cut 2
- front skirt lining — cut 1
- back skirt lining — cut 2

3. From interfacing:

- 1st front bodice panel — cut 2
- 2nd front bodice panel — cut 4
- 3rd front bodice panel — cut 4
- 4th front bodice panel — cut 4
- 1st back bodice panel — cut 4
- 2nd back bodice panel — cut 4
- 3rd back bodice panel — cut 4
- 4th back bodice panel — cut 4

Attention! Interface (block fuse) the main fabric prior to cutting the pieces.

IMPORTANT! Don't forget to transfer all pattern markings and notches onto the fabric.

SEAM ALLOWANCES

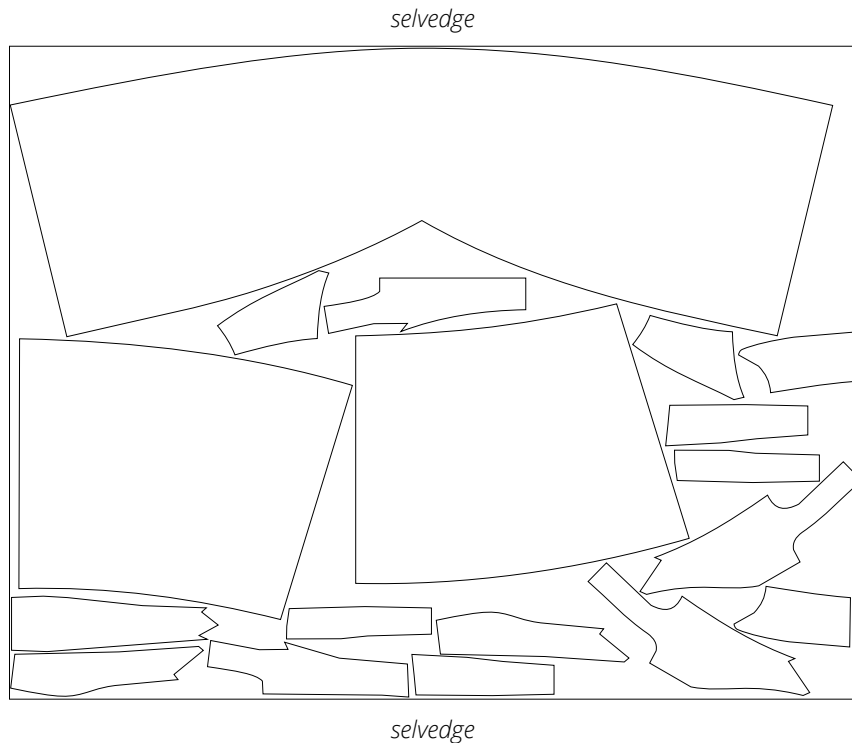
All pattern pieces include seam allowances as follows:

- lining hem allowance — 2 cm (3/4")
- center seam allowance on the 1st back bodice panel, back skirt, and back skirt lining pieces — 1.5 cm (5/8")
- all other edges — 1 cm (3/8")

Take this into account when laying out pattern pieces on the fabric.

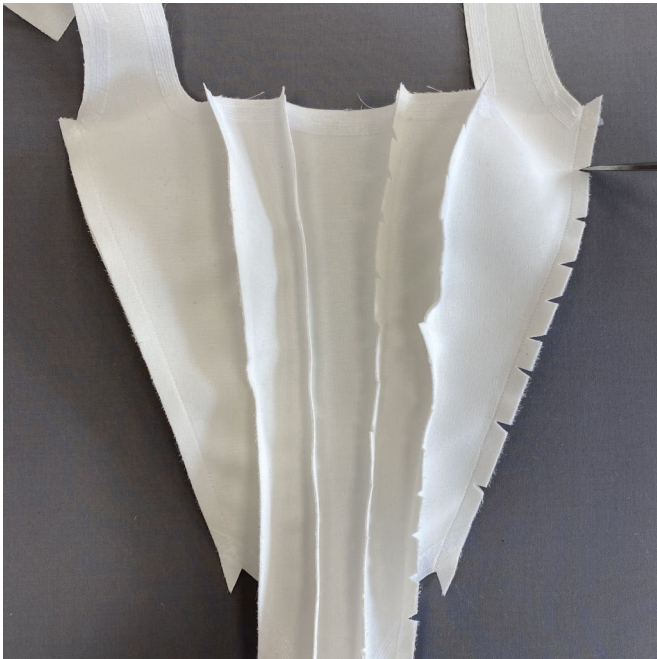
CUTTING LAYOUT

Main fabric, 140 cm (55") wide, with a directional print/nap,
cut on a single layer, for all sizes in all heights





Press all the front bodice seams flat.



Clip into the curved sections of the seam allowances, stopping 2 mm short of the seam.



Press the seam allowances open.