

FROM THE FOUNDER OF THE #VIKISEWS BRAND

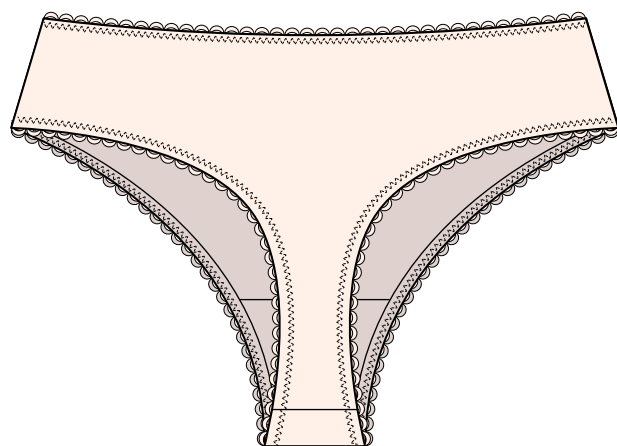


Back in 2016, when I was working on my first set of sewing instructions, I was trying to write them in such a way that even a complete beginner could easily understand and use them to create their very first garment. These instructions laid the foundation for the Vikisews brand, its vision and its mission. I wanted to create modern patterns with the utmost detailed and clear instructions.

Now, with each new collection we are constantly improving our instructions, amending them and adding more relevant details. By the time the final product reaches you, our drafters, correctors, and editors would have spent weeks perfecting every word and every photograph. If you compile a few of our instructions together, you will get a sewing manual that will assist you in sewing all kinds of garments at any difficulty level.

And I would be very happy if these instructions helped you to turn your hobby into a lifelong passion... Enjoy the process! Create your ultimate dream wardrobe! Wear your garments proudly for years to come!

If you have any questions, please contact us at info@vikisews.com — we are always there to help.



ILLE PATTERN DESCRIPTION

Ille is a low-rise thong. All edges of the thong are finished with picot lingerie elastic.



IMPORTANT!

The contents of this pattern are copyright protected and belong exclusively to Vikisews. You may use Vikisews patterns for personal use. It is prohibited to share Vikisews patterns and instructions with third parties, as well as to publish patterns and instructions online for public access. **Non-compliance with the mentioned rules is a violation of the US copyright law and may result in civil liability and criminal prosecution.**

You may use Vikisews patterns for commercial use, to sew custom-made garments and/or create fashion collections, on the condition that the patterns are solely used in a manufacturing setting and are not further shared with individuals.

SUGGESTED FABRIC

To sew this thong, choose medium-weight, pliable, soft, stretchy (stretch factor 1.5) knit fabrics with natural, artificial, blended or synthetic fiber content.

You can determine the stretch factor of the fabric yourself. Mark 10 cm (4") along the crosswise grain of the fabric, lay a ruler next to the marked section, and stretch the fabric. Divide the measurement you get by 10.

The following fabrics are recommended: jersey, knits, stretch mesh, biflex.

Attention! We recommend using only stretchy fabrics for this thong.

As an additional material for the gusset, choose medium-weight and medium-stretch knits. We recommend using fabrics made of 100% natural fibers, such as jersey.

The thong in the photo is made of stretch mesh. The fabric is medium weight and stretchy. The fiber content is 95% nylon and 5% spandex. The fabric weight is 147 g/m².

The additional material is 100% cotton. The fabric weight is 120 g/m².

FABRIC AND NOTIONS REQUIREMENTS

1. Main fabric, 160 cm wide, with a directional print/nap, in meters:

Height, cm	Size			
	34-38	40	42-48	50-52
1 (154-160) – 2 (162-168)	0.3	0.3	0.35	0.35
3 (170-176)– 4 (178-184)	0.3	0.35	0.35	0.4

Main fabric, 63" wide, with a directional print/nap, in yards:

Height, ft	Size	
	34-48	50-52
1 (5'1"-5'3") – 2 (5'4"-5'6")	3/8	3/8
3 (5'7"-5'9") – 4 (5'10"-6'1")	3/8	1/2

2. Additional fabric, 110–140 cm (43–55") wide, for all heights:

Size	34–44	46–52
meters	0.15	0.2
yards	1/8	1/4

IMPORTANT! When purchasing fabric, please account for shrinkage and buy 5% more than required.

3. Picot lingerie elastic, 0.7–1 cm (1/4–3/8") wide, for all heights:

Size	34	36	38	40	42	44	46	48	50–52
meters	1.7	1.8	1.9	2	2.1	2.2	2.3	2.4	2.5
yards	1 7/8	2	2 1/8	2 1/8	2 1/4	2 3/8	2 1/2	2 5/8	2 3/4

The exact waist and leg opening elastic lengths are specified on the pattern.

4. Matching thread — 5 spools (1 spool for the sewing machine + 4 spools for the overlocker)

TOOLS AND EQUIPMENT

- sewing machine for construction
- overlocker for construction and finishing raw edges. It can be replaced with a stretch overlock stitch or a zigzag stitch on the sewing machine (overlock or zigzag stitch width 2–3 mm, stitch length 2.5 mm)

IMPORTANT! We recommend using specialty needles when working with knit fabrics and elastic (for example, *STRETCH*, *SUPER STRETCH*, *JERSEY*, etc.). These are ballpoint needles, so they part the threads of the fabric you are stitching without piercing them.

PATTERN PIECES LIST

1. From main fabric:

- front — cut 1 on fold
- back — cut 1 on fold

2. From additional fabric:

- gusset — cut 1

IMPORTANT! Don't forget to transfer all pattern markings and notches onto the fabric.

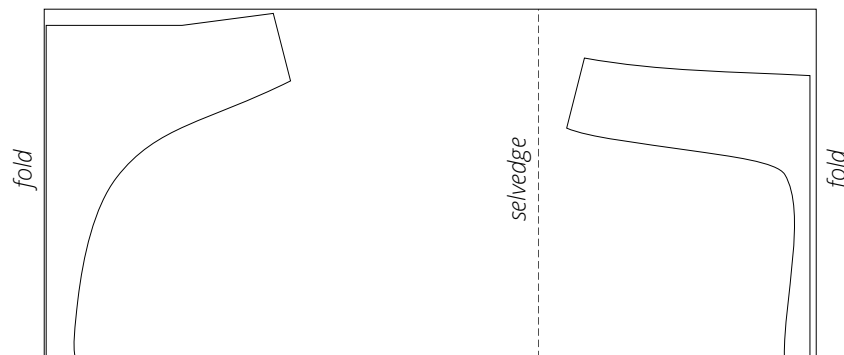
SEAM ALLOWANCES

All pattern pieces include 1 cm (3/8") seam allowances.

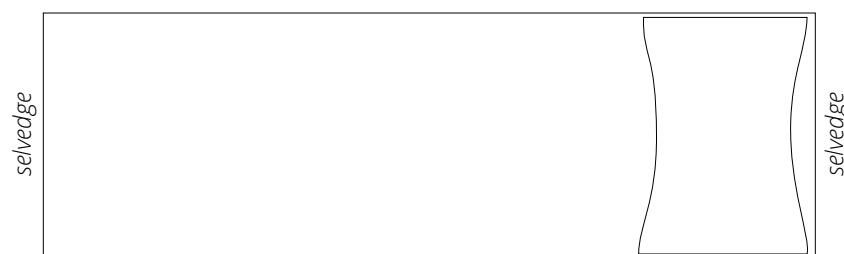
Take this into account when laying out pattern pieces on the fabric.

CUTTING LAYOUT

Main fabric, 160 cm (63") wide, with a directional print/nap, cut with two folds, for all sizes in all heights



Additional fabric, 110–140 cm (43–55") wide, cut on a single layer, for all sizes in all heights



READY? LET'S GET SEWING!



Place the gusset piece right side down to the wrong side of the back piece, align the back edge of the gusset with the bottom edge of the back piece.

Place the front and back pieces right sides together and align the bottom edges. Match the notches and pin.



Machine-stitch, backstitching at the beginning and end of the seam.

Press the seam flat.



Trim the seam allowances down to 5 mm (just under 1/4").