

FROM THE FOUNDER OF THE #VIKISEWS BRAND

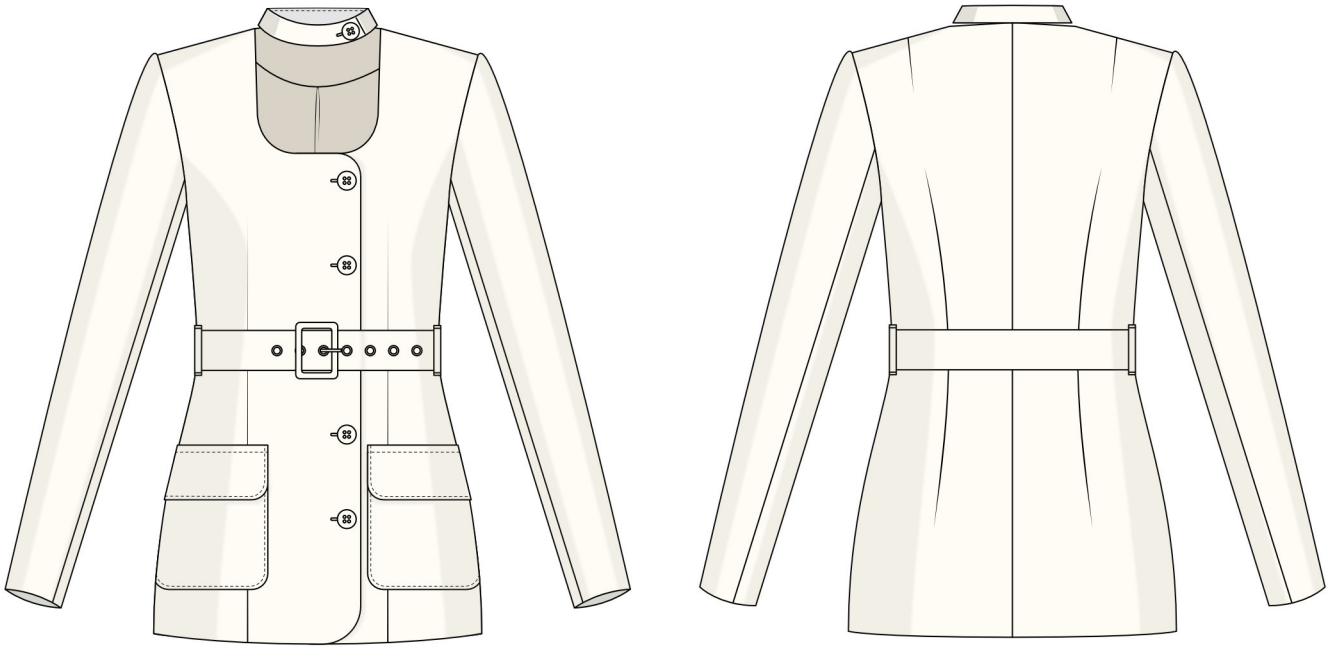


Back in 2016, when I was working on my first set of sewing instructions, I was trying to write them in such a way that even a complete beginner could easily understand and use them to create their very first garment. These instructions laid the foundation for the Vikisews brand, its vision and its mission. I wanted to create modern patterns with the utmost detailed and clear instructions.

Now, with each new collection we are constantly improving our instructions, amending them and adding more relevant details. By the time the final product reaches you, our drafters, correctors, and editors would have spent weeks perfecting every word and every photograph. If you compile a few of our instructions together, you will get a sewing manual that will assist you in sewing all kinds of garments at any difficulty level.

And I would be very happy if these instructions helped you to turn your hobby into a lifelong passion... Enjoy the process! Create your ultimate dream wardrobe! Wear your garments proudly for years to come!

If you have any questions, please contact us at info@vikisews.com — we are always there to help.



BRIGITTA PATTERN DESCRIPTION

Brigitta is a semi-fitted lined blazer with an accentuated waist. The back of the blazer is fitted with waist darts and a center seam. The front is fitted with waist darts that end at the bottom edge. The long set-in sleeves are made up of two pieces. The detachable stand collar is attached with a snap and closes with a button and buttonhole. The blazer has an off-center button and buttonhole closure and patch pockets with flaps at the front. The detachable belt with a buckle is attached to the blazer with belt loops at the side seams. Brigitta is hip-length.



IMPORTANT!

The contents of this pattern are copyright protected and belong exclusively to Vikisews. You may use Vikisews patterns for personal use. It is prohibited to share Vikisews patterns and instructions with third parties, as well as to publish patterns and instructions online for public access. **Non-compliance with the mentioned rules is a violation of the US copyright law and may result in civil liability and criminal prosecution.**

You may use Vikisews patterns for commercial use, to sew custom-made garments and/or create fashion collections, on the condition that the patterns are solely used in a manufacturing setting and are not further shared with individuals.

TOTAL EASE ALLOWANCE

	Bust ease	Waistline ease	Hipline ease	Upper arm ease
cm	9.7–13.5	14–18	10.5–13.8	6.2–6.7
inches	3 7/8–5 3/8	5 1/2–7 1/8	4 1/8–5 3/8	2 1/2–2 5/8

GARMENT LENGTH, SLEEVE LENGTH

Height, cm	Back length, cm	Sleeve length, cm
1 (154–160)	69.2–71	61.5–63.3
2 (162–168)	72.2–73.9	63.5–65.2
3 (170–176)	75.2–76.9	65.4–67.1
4 (178–184)	78.1–79.9	67.4–69

Height, ft	Back length, in	Sleeve length, in
1 (5'1"–5'3")	27 1/4–28	24 1/4–24 7/8
2 (5'4"–5'6")	28 3/8–29 1/8	25–25 5/8
3 (5'7"–5'9")	29 5/8–30 1/4	24 3/4–26 3/8
4 (5'10"–6'1")	30 3/4–31 1/2	26 1/2–27 1/8

SUGGESTED FABRIC

To sew this blazer, choose medium-weight, structured, non-stretch or low-stretch suiting fabrics made of natural fibers, artificial fibers, blends, or synthetics.

The following fabrics are recommended: wool suiting, viscose suiting, gabardine.

Attention! We do not recommend stretchy, soft, lightweight (dress-weight wool), and loosely woven suiting fabrics.

For the lining, we recommend lining fabrics made of artificial fibers, synthetic fibers, or blends.

The blazer in the photo is made of viscose suiting. The fabric is medium weight, structured, and low-stretch. The fiber content is polyester (75%), viscose (18%), and elastane (7%). The fabric weight is 310 g/m².

The lining is a blend of polyester (55%) and viscose (45%). The fabric weight is 130 g/m².

FABRIC AND NOTIONS REQUIREMENTS

1. Main fabric, 140 cm wide, with a directional print/nap, cut in two steps, in meters:

Height, cm	Sizes 34–38			Sizes 40–44			Sizes 46–52		
	Step 1	Step 2	Total	Step 1	Step 2	Total	Step 1	Step 2	Total
1 (154–160)	1.55	0.7	2.25	1.6	0.7	2.3	1.7	0.7	2.4
2 (162–168)	1.65	0.7	2.35	1.65	0.75	2.4	1.7	0.75	2.45
3 (170–176)	1.7	0.75	2.45	1.7	0.75	2.45	1.75	0.75	2.5
4 (178–184)	1.75	0.75	2.5	1.75	0.75	2.5	1.8	0.75	2.55

Main fabric, 55" wide, with a directional print/nap, cut in two steps, in yards:

Height, ft	Sizes 34–38			Sizes 40–44			Sizes 46–52		
	Step 1	Step 2	Total	Step 1	Step 2	Total	Step 1	Step 2	Total
1 (5'1"–5'3")	1 3/4	3/4	2 1/2	1 3/4	3/4	2 1/2	1 7/8	3/4	2 5/8
2 (5'4"–5'6")	1 3/4	3/4	2 5/8	1 3/4	7/8	2 5/8	1 7/8	7/8	2 5/8
3 (5'7"–5'9")	1 7/8	7/8	2 5/8	1 7/8	7/8	2 5/8	1 7/8	7/8	2 3/4
4 (5'10"–6'1")	1 7/8	7/8	2 3/4	1 7/8	7/8	2 3/4	2	7/8	2 3/4

2. Lining fabric, 140 cm wide, with a directional print, in meters:

Height, cm	Size			
	34–38	40–44	46–48	50–52
1 (154–160)	1.45	1.5	1.55	1.6
2 (162–168)	1.55	1.6	1.6	1.65
3 (170–176)	1.6	1.65	1.65	1.7
4 (178–184)	1.65	1.7	1.75	1.75

Lining fabric, 55" wide, with a directional print, in yards:

Height, ft	Size			
	34–38	40–44	46–48	50–52
1 (5'1"–5'3")	1 5/8	1 5/8	1 3/4	1 3/4
2 (5'4"–5'6")	1 3/4	1 3/4	1 3/4	1 3/4
3 (5'7"–5'9")	1 3/4	1 3/4	1 3/4	1 7/8
4 (5'10"–6'1")	1 3/4	1 7/8	1 7/8	1 7/8

3. Woven interfacing, 140 cm wide, cut in one direction and in two steps, in meters:

Height, cm	Sizes 34–38			Sizes 40–44			Sizes 46–52		
	Step 1	Step 2	Total	Step 1	Step 2	Total	Step 1	Step 2	Total
1 (154–160)	1.55	0.25	1.8	1.6	0.25	1.85	1.7	0.25	1.95
2 (162–168)	1.65	0.25	1.9	1.65	0.25	1.9	1.7	0.25	1.95
3 (170–176)	1.7	0.25	1.95	1.7	0.25	1.95	1.75	0.3	2.05
4 (178–184)	1.75	0.25	2	1.75	0.25	2	1.8	0.3	2.1

Woven interfacing, 55" wide, cut in one direction and in two steps, in yards:

Height, ft	Sizes 34–44			Sizes 46–52		
	Step 1	Step 2	Total	Step 1	Step 2	Total
1 (5'1"–5'3")	1 3/4	1/4	2	1 7/8	1/4	2 1/8
2 (5'4"–5'6")	1 3/4	1/4	2 1/8	1 7/8	1/4	2 1/8
3 (5'7"–5'9")	1 7/8	1/4	2 1/8	1 7/8	3/8	2 1/4
4 (5'10"–6'1")	1 7/8	1/4	2 1/8	2	3/8	2 1/4

IMPORTANT! When purchasing fabric, please account for shrinkage and buy 5% more than required.

4. Stitched bias-cut fusible stay tape with stitch reinforcement, 1 cm (3/8") wide — 1.5 m (1 5/8 yd)
5. Stitched straight-grain fusible stay tape, 1 cm (3/8") wide — 3.7 m (4 yd)
6. One pair of shoulder pads
7. One pair of sleeve heads
8. Six buttons, 2–2.2 cm (3/4–7/8") in diameter
9. Two transparent snaps, 1 cm (3/8") in diameter
10. Eight grommets, 0.5 cm (1/4") in diameter
11. One buckle with a prong, 5 cm (2") in diameter
12. Matching thread — 2 spools

TOOLS AND EQUIPMENT

- sewing machine for construction
- buttonhole foot for the sewing machine
- grommet press tool with a set of molds, hole puncher

PATTERN PIECES LIST

1. From interfaced main fabric:

- front — cut 2
- back — cut 2
- front facing — cut 2
- back neck facing — cut 1
- top stand collar — cut 1
- bottom stand collar — cut 1
- stand collar tab — cut 1
- patch pocket top flap — cut 2
- belt — cut 1

From non-interfaced main fabric:

- top sleeve — cut 2
- bottom sleeve — cut 2
- patch pocket — cut 2
- belt loops — cut 1 (2 pcs)

2. From lining fabric:

- front lining — cut 2
- back lining — cut 2
- top sleeve lining — cut 2
- bottom sleeve lining — cut 2
- pocket lining — cut 2
- patch pocket bottom flap — cut 2

IMPORTANT! Don't forget to transfer all pattern markings and notches onto the fabric.

Partially interface the following:

- top sleeve — 2 pieces (interface the sleeve cap and the bottom part of the sleeve outlined on the pattern)
- bottom sleeve — 2 pieces (interface the sleeve cap and the bottom part of the sleeve outlined on the pattern)
- patch pocket top edge

Additionally, cut the following from interfacing:

- a piece outlined on the belt pattern, to additionally reinforce the buckle section

The interfacing piece should be cut on the straight grain (parallel to the selvedge).

IMPORTANT! The pattern pieces that have the "face" inscription should be placed with the blank side onto the right side of fabric when cutting.

SEAM ALLOWANCES

All pattern pieces include seam allowances as follows:

- garment hem allowance — 4 cm (1 5/8")
- sleeve hem allowance — 4 cm (1 5/8")
- patch pocket top seam allowance — 4 cm (1 5/8")
- all other edges — 1 cm (3/8")

Take this into account when laying out pattern pieces on the fabric.