

# FROM THE FOUNDER OF THE #VIKISEWS BRAND

---



Back in 2016, when I was working on my first set of sewing instructions, I was trying to write them in such a way that even a complete beginner could easily understand and use them to create their very first garment. These instructions laid the foundation for the Vikisews brand, its vision and its mission. I wanted to create modern patterns with the utmost detailed and clear instructions.

Now, with each new collection we are constantly improving our instructions, amending them and adding more relevant details. By the time the final product reaches you, our drafters, correctors, and editors would have spent weeks perfecting every word and every photograph. If you compile a few of our instructions together, you will get a sewing manual that will assist you in sewing all kinds of garments at any difficulty level.

And I would be very happy if these instructions helped you to turn your hobby into a lifelong passion... Enjoy the process! Create your ultimate dream wardrobe! Wear your garments proudly for years to come!

If you have any questions, please contact us at [info@vikisews.com](mailto:info@vikisews.com) — we are always there to help.



## LOLLE PATTERN DESCRIPTION

---

Lolle is a semi-fitted jacket with a straight cut. There is a yoke on the back and welt pockets with sewn-in ends on the front. The left front features a patch pocket. The shirt collar has a separate collar stand. The long shirt sleeves are made up of two pieces, with a slit in the elbow seam. The cuffs have a stud button and buttonhole closure. The jacket fastens with a separating zipper at the center front. The bottom edge of the jacket features an applied waistband with two tabs that have a stud button and buttonhole closure. All seams are topstitched. Lolle is below-waist length.



## IMPORTANT!

---

The contents of this pattern are copyright protected and belong exclusively to Vikisews. You may use Vikisews patterns for personal use. It is prohibited to share Vikisews patterns and instructions with third parties, as well as to publish patterns and instructions online for public access. **Non-compliance with the mentioned rules is a violation of the US copyright law and may result in civil liability and criminal prosecution.**

You may use Vikisews patterns for commercial use, to sew custom-made garments and/or create fashion collections, on the condition that the patterns are solely used in a manufacturing setting and are not further shared with individuals.

# TOTAL EASE ALLOWANCE

	Bust ease	Waistline ease	Upper arm ease
cm	27.2–34.3	42.4–50.3	18–22.6
inches	10 3/4–13 1/2	16 3/4–19 3/4	7 1/8–8 7/8

# GARMENT LENGTH, SLEEVE LENGTH

Height, cm	Back length including waistband, cm	Sleeve length including shoulder width and cuff, cm
1 (154–160)	43.3–46.4	75–76.5
2 (162–168)	45.4–48.4	77.3–78.9
3 (170–176)	48.4–51.8	79.7–81.3
4 (178–184)	51.5–54.5	82.1–83.7

Height, ft	Back length including waistband, in	Sleeve length including shoulder width and cuff, in
1 (5'1"–5'3")	17–18 1/4	29 1/2–30 1/8
2 (5'4"–5'6")	17 7/8–19	30 3/8–31 1/8
3 (5'7"–5'9")	19–20 3/8	31 3/8–32
4 (5'10"–6'1")	20 1/4–21 1/2	32 3/8–33

# SUGGESTED FABRIC

To sew this jacket, choose medium- to heavyweight, non-stretch or low-stretch fabrics made of natural fibers, artificial fibers, blends, or synthetics.

The following fabrics are recommended: denim, corduroy.

For the pocket lining, we recommend using cotton or poplin.

The jacket in the photo is made of denim. The fabric is medium weight and has very little stretch. The fiber content is 100% cotton. The fabric weight is 300 g/m<sup>2</sup>.

The pocket lining is 100% cotton.

**Important!** If you choose the fabric that gets a stone washing effect after washing, make sure to wash your fabric once before sewing.

In this case refer to the fabric requirements given for one size and height bigger than your actual ones as the fabric will shrink.

Wash the finished garment one or two times.

# FABRIC AND NOTIONS REQUIREMENTS

1. Main fabric, 140 cm wide, with a directional print/nap, in meters:

Height, cm	Size			
	XS-S	M	L	XL
1 (154–160)	1.7	1.8	1.9	2
2 (162–168)	1.75	1.8	1.95	2
3 (170–176)	1.8	1.85	2	2.05
4 (178–184)	1.85	1.95	2.05	2.1

Main fabric, 150 cm wide, with a directional print/nap, in meters:

Height, cm	Size				
	XS	S	M	L	XL
1 (154–160)	1.5	1.55	1.7	1.7	1.75
2 (162–168)	1.55	1.6	1.75	1.75	1.8
3 (170–176)	1.6	1.7	1.8	1.85	1.9
4 (178–184)	1.65	1.75	1.85	1.9	1.95

Main fabric, 55" wide, with a directional print/nap, in yards:

Height, ft	Size			
	XS-S	M	L	XL
1 (5'1"–5'3")	1 7/8	2	2 1/8	2 1/8
2 (5'4"–5'6")	1 7/8	2	2 1/8	2 1/8
3 (5'7"–5'9")	2	2	2 1/8	2 1/4
4 (5'10"–6'1")	2	2 1/8	2 1/4	2 1/4

Main fabric, 59" wide, with a directional print/nap, in yards:

Height, ft	Size				
	XS	S	M	L	XL
1 (5'1"–5'3")	1 5/8	1 3/4	1 7/8	1 7/8	1 7/8
2 (5'4"–5'6")	1 3/4	1 3/4	1 7/8	1 7/8	2
3 (5'7"–5'9")	1 3/4	1 7/8	2	2	2 1/8
4 (5'10"–6'1")	1 3/4	1 7/8	2	2 1/8	2 1/8

2. Lining fabric, 140 cm (55") wide, with a directional print, for all heights:

Size	XS-S	M-XL
meters	0.25	0.3
yards	1/4	3/8

**IMPORTANT!** When purchasing fabric, please account for shrinkage and buy 5% more than required.

3. Lightweight interfacing, knit or woven, 140 cm (55") wide, for all heights:

Size	XS-S	M	L	XL
meters	0.6	0.65	0.7	0.75
yards	5/8	3/4	3/4	7/8

4. Stitched bias-cut fusible stay tape with stitch reinforcement, 1.5 cm (5/8") wide — 0.5 m (1/2 yd)
5. One separating zipper, Nos. 3.5–4, for all sizes:

Height, cm	Zipper length, cm	Height, ft	Zipper length, in
1 (154–160)	45	1 (5'1"–5'3")	17 3/4
2 (162–168)	50	2 (5'4"–5'6")	19 5/8
3 (170–176)	55	3 (5'7"–5'9")	21 5/8
4 (178–184)	55	4 (5'10"–6'1")	21 5/8

6. Six (plus one or two spare ones) metal stud buttons for jeans, 1.5–2 cm (5/8–3/4") in diameter
7. Matching thread — 5 spools (1 spool for the sewing machine + 4 spools for the overlocker)
8. Matching (or contrasting) topstitching thread (for example, Madeira No. 35) — 1 spool

## TOOLS AND EQUIPMENT

- sewing machine for construction
- overlocker for finishing raw edges. This may be replaced with a stretch overlock stitch or a zigzag stitch on the sewing machine (overlock or zigzag stitch width 2–3 mm, stitch length 2.5 mm)
- buttonhole foot for the sewing machine
- stitch-in-the-ditch foot for the sewing machine (optional)
- one-sided foot for the sewing machine to attach the zipper
- stud button press tools with a corresponding set of molds, hole puncher

## PATTERN PIECES LIST

### 1. From main fabric:

- front — cut 2
- back — cut 1 on fold
- back yoke — cut 1 on fold
- top sleeve — cut 2
- bottom sleeve — cut 2
- upper collar — cut 1 on fold
- undercollar — cut 2
- collar stand — cut 2
- waistband — cut 1
- cuff — cut 2
- front facing — cut 2
- pocket lining — cut 2
- pocket facing — cut 2
- welt — cut 2
- patch pocket — cut 1
- waistband tab — cut 2

### 2. From lining fabric:

- pocket lining — cut 2

**IMPORTANT!** Don't forget to transfer all pattern markings and notches onto the fabric.

### 3. From interfacing:

- waistband — cut 1 on fold (1/2 of the width)
- cuff — cut 2 (1/2 of the width)
- waistband tab — cut 2 (1/2 of the length)
- upper collar — cut 1 on fold
- undercollar — cut 2
- collar stand — cut 2
- front facing — cut 2
- welt — cut 2

Additionally, cut the following from interfacing:

- two strips, 4 cm (1 5/8") wide (length according to the pattern), to interface the welt pocket opening areas on the front pieces
- one strip, 4.5 cm (1 3/4") wide (length according to the pattern), to interface the top seam allowance on the patch pocket piece

The interfacing strips should be cut on the straight grain (parallel to the selvedge).

**Important!** The pattern pieces that have the "face" inscription should be placed with the blank side onto the right side of fabric when cutting.

## SEAM ALLOWANCES

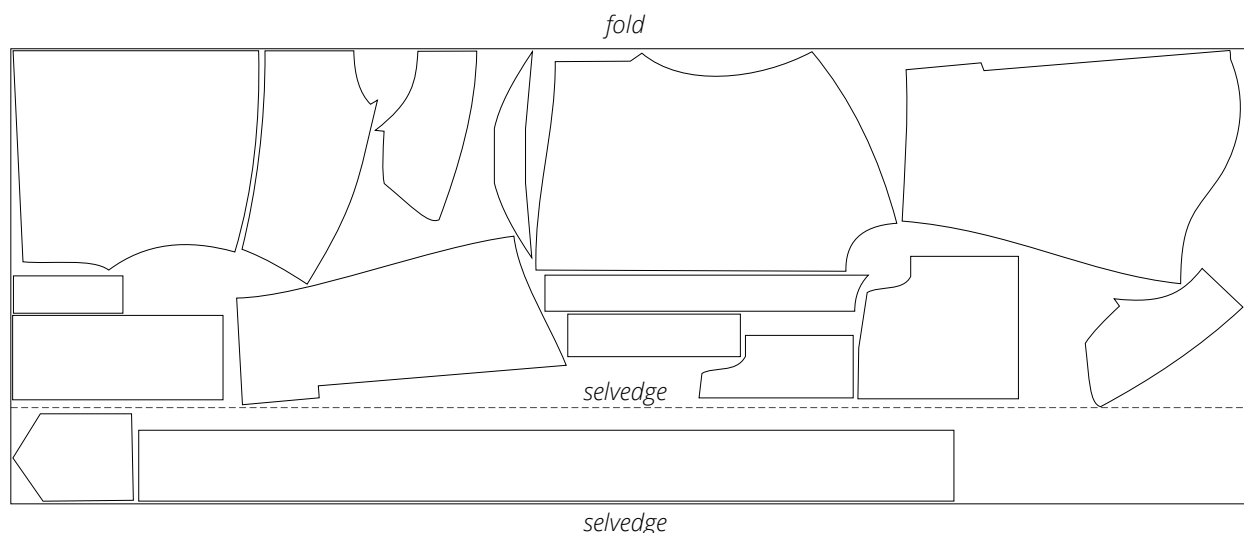
All pattern pieces include seam allowances as follows:

- slit seam allowance on the top sleeve piece — 2 cm (3/4")
- slit seam allowance on the bottom sleeve piece — 3 cm (1 1/8")
- top, side, and curved seam allowances on the pocket lining and pocket facing pieces — 1.5 cm (5/8")
- side seam allowances on the welt piece — 1.5 cm (5/8")
- top seam allowance on the patch pocket piece — 3.5 cm (1 3/8")
- all other edges — 1 cm (3/8")

Take this into account when laying out pattern pieces on the fabric.

## CUTTING LAYOUT

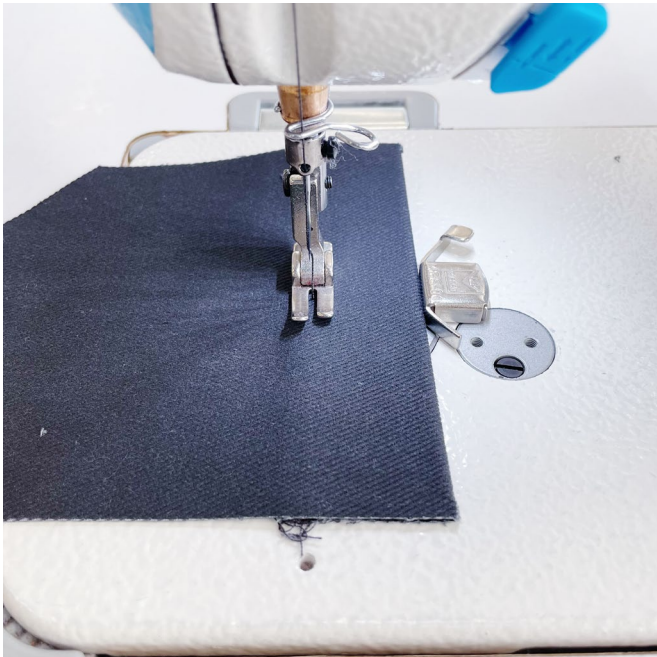
Main fabric, 140 cm (55") wide, with a directional print/nap,  
cut on a partial fold, for sizes XS-M in all heights







Fold the top seam allowance to the wrong side, aligning the edge with the marked line, and press.



Using topstitching thread, sew a row of topstitching along the pressed top edge of the patch pocket. Work from the right side and stitch at 3 cm (1 1/8") from the pressed edge, backstitching at the beginning and end of the seam. Use a 3.5 mm stitch length.



Press the seam.