

FROM THE FOUNDER OF THE #VIKISEWS BRAND

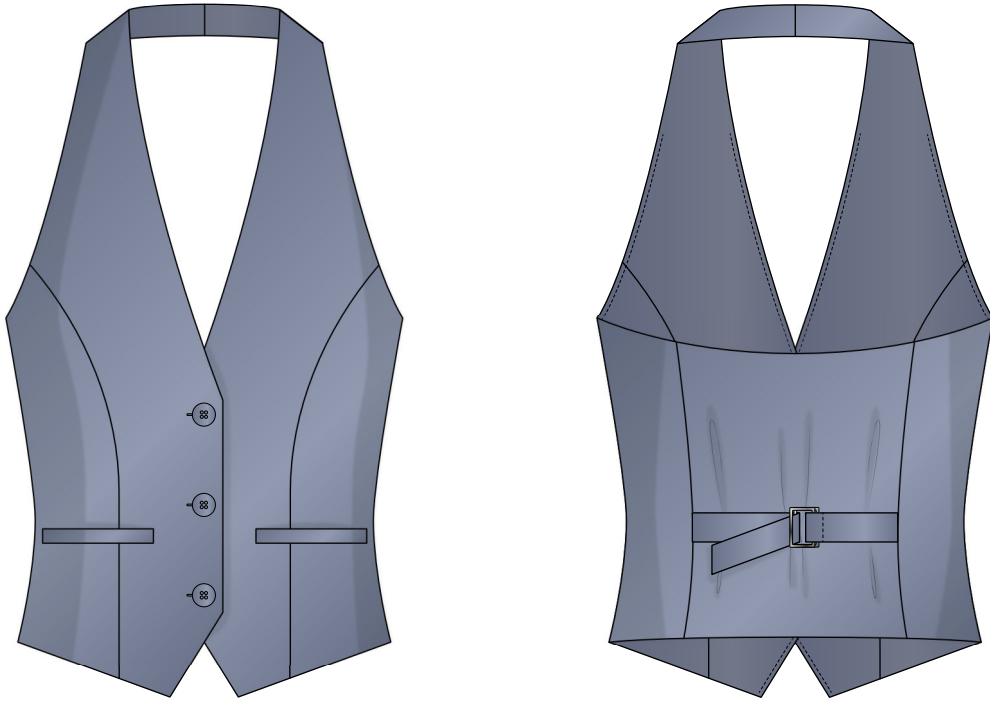


Back in 2016, when I was working on my first set of sewing instructions, I was trying to write them in such a way that even a complete beginner could easily understand and use them to create their very first garment. These instructions laid the foundation for the Vikisews brand, its vision and its mission. I wanted to create modern patterns with the utmost detailed and clear instructions.

Now, with each new collection we are constantly improving our instructions, amending them and adding more relevant details. By the time the final product reaches you, our drafters, correctors, and editors would have spent weeks perfecting every word and every photograph. If you compile a few of our instructions together, you will get a sewing manual that will assist you in sewing all kinds of garments at any difficulty level.

And I would be very happy if these instructions helped you to turn your hobby into a lifelong passion... Enjoy the process! Create your ultimate dream wardrobe! Wear your garments proudly for years to come!

If you have any questions, please contact us at info@vikisews.com — we are always there to help.



JULES PATTERN DESCRIPTION

Jules is a close-fitting, fully lined vest with an open back. The front features faux welt pockets with sewn-in ends and bust darts transferred into princess seams. The back is fitted with princess seams and has two tabs with rectangle loop rings. The garment has a deep V-neckline and a center front button and buttonhole fastening. There is a shaped hem at the front. Jules is above-hip length.



IMPORTANT!

The contents of this pattern are copyright protected and belong exclusively to Vikisews. You may use Vikisews patterns for personal use. It is prohibited to share Vikisews patterns and instructions with third parties, as well as to publish patterns and instructions online for public access. **Non-compliance with the mentioned rules is a violation of the US copyright law and may result in civil liability and criminal prosecution.**

You may use Vikisews patterns for commercial use, to sew custom-made garments and/or create fashion collections, on the condition that the patterns are solely used in a manufacturing setting and are not further shared with individuals.

TOTAL EASE ALLOWANCE

	Bust ease (estimated)	Waistline ease
cm	3.4–5.7	6.6–9.6
inches	1 3/8–2 1/4	2 5/8–3 3/4

GARMENT LENGTH

Height, cm	Garment length from waist down (estimated), cm	Height, ft	Garment length from waist down (estimated), in
1 (154–160)	1	1 (5'1"–5'3")	3/8
2 (162–168)	2	2 (5'4"–5'6")	3/4
3 (170–176)	3	3 (5'7"–5'9")	1 1/8
4 (178–184)	4	4 (5'10"–6'1")	1 5/8

SUGGESTED FABRIC

To sew this vest, choose suiting fabrics with the following properties:

- medium weight, structured, non-stretch or low-stretch, semi-sheer or opaque
- the fiber content can include natural fibers (wool, cotton), artificial fibers (viscose), blends (wool + silk, wool + polyester, cotton + viscose, etc.), and synthetics (polyester, polyester + elastane)
- the following fabrics are recommended: suiting, denim.

Attention! We do not recommend stretchy fabrics (knits), lightweight soft fabrics, or loosely woven fabrics.

For the lining, choose lining fabrics made of artificial fibers (viscose), blends (viscose + elastane, viscose + polyester), or synthetics (polyester, polyester + elastane).

The vest in the photo is made of suiting fabric. The fabric is medium weight, soft, and non-stretch. The fiber content is a blend of 70% cotton, 28% viscose, and 2% spandex. The fabric weight is 320 g/m².

The fiber content of the lining is 100% polyester. The fabric weight is 62 g/m².

FABRIC AND NOTIONS REQUIREMENTS

1. Main fabric, 140 cm wide, with a directional print/nap, in meters:

Height, cm	Size						
	34	36	38-40	42	44-46	48	50-52
1 (154-160)	0.65	0.65	0.7	0.7	0.7	0.7	0.75
2 (162-168)	0.65	0.7	0.7	0.7	0.7	0.75	0.75
3 (170-176)	0.7	0.7	0.7	0.7	0.75	0.75	0.75
4 (178-184)	0.7	0.7	0.7	0.75	0.75	0.75	0.75

Main fabric, 55" wide, with a directional print/nap, in yards:

Height, ft	Size				
	34-40	42	44-46	48	50-52
1 (5'1"-5'3")	3/4	3/4	3/4	3/4	7/8
2 (5'4"-5'6")	3/4	3/4	3/4	7/8	7/8
3 (5'7"-5'9")	3/4	3/4	7/8	7/8	7/8
4 (5'10"-6'1")	3/4	7/8	7/8	7/8	7/8

2. Lining fabric, 140 cm wide, with a directional print, in meters:

Height, cm	Size
	34-52
1 (154-160)	0.4
2 (162-168)	0.4
3 (170-176)	0.4
4 (178-184)	0.45

Lining fabric, 55" wide, with a directional print, in yards:

Height, ft	Size
	34-52
1 (5'1"-5'3")	3/8
2 (5'4"-5'6")	3/8
3 (5'7"-5'9")	3/8
4 (5'10"-6'1")	1/2

3. Interfacing, 30 g/m², 140 cm wide, in meters:

Height, cm	Size						
	34	36	38–40	42	44–46	48	50–52
1 (154–160)	0.65	0.65	0.7	0.7	0.7	0.7	0.75
2 (162–168)	0.65	0.7	0.7	0.7	0.7	0.75	0.75
3 (170–176)	0.7	0.7	0.7	0.7	0.75	0.75	0.75
4 (178–184)	0.7	0.7	0.7	0.75	0.75	0.75	0.75

Interfacing, 30 g/m², 55" wide, in yards:

Height, ft	Size				
	34–40	42	44–46	48	50–52
1 (5'1"–5'3")	3/4	3/4	3/4	3/4	7/8
2 (5'4"–5'6")	3/4	3/4	3/4	7/8	7/8
3 (5'7"–5'9")	3/4	3/4	7/8	7/8	7/8
4 (5'10"–6'1")	3/4	7/8	7/8	7/8	7/8

IMPORTANT! When purchasing fabric, please account for shrinkage and buy 5% more than required.

4. Three buttons, 1.5 cm (5/8") in diameter

5. Two metal or plastic rectangle loop rings, 2 cm (3/4") wide

6. Stitched bias-cut fusible stay tape with stitch reinforcement, 1.5 cm (5/8") wide — 4 m (4 3/8 yd)

7. Matching thread — 2 spools (1 spool for the main fabric + 1 spool for the lining fabric)

TOOLS AND EQUIPMENT

- sewing machine for construction
- buttonhole foot for the sewing machine
- stitch-in-the-ditch foot for the sewing machine (optional)
- one-sided foot for the sewing machine

PATTERN PIECES LIST

1. From main fabric:

- center front — cut 4
- side front — cut 2
- side back — cut 2
- center back — cut 1 on fold
- welt — cut 2
- right tab — cut 1
- left tab — cut 1
- pocket facing — cut 2

2. From lining fabric:

- side front — cut 2
- side back — cut 2
- center back — cut 1 on fold

3. From interfacing:

- center front — cut 4
- side front — cut 2
- side back — cut 2
- center back — cut 1 on fold
- welt — cut 2
- pocket facing — cut 2

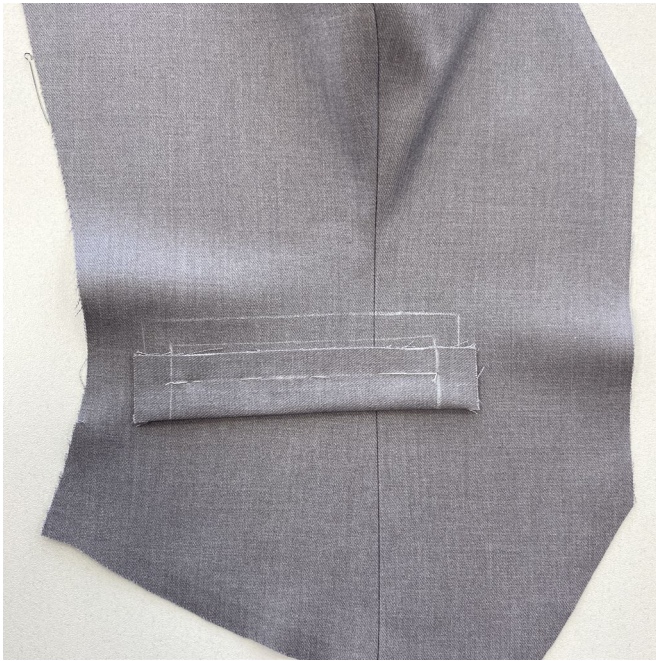
Additionally, cut two interfacing strips, 3.5 cm (1 3/8") wide (length according to the pattern), to reinforce the pocket opening seam allowances on the center front and side front pieces. The interfacing pieces should be cut on the straight grain (parallel to the selvedge).

IMPORTANT! Don't forget to transfer all pattern markings and notches onto the fabric.

SEAM ALLOWANCES

All pattern pieces include 1 cm (3/8") seam allowances.

Take this into account when laying out pattern pieces on the fabric.



Transfer the pocket lines from the pattern pieces to the right side of the assembled front piece. Place the welt piece onto the assembled front, with the raw edge of the welt facing upwards. Align the lines on the welt with the bottom and side pocket lines, pin, and hand-baste in place if necessary.



Machine-stitch along the bottom pocket line, backstitching at the beginning and end of the seam.



Place the pocket facing piece right side down to the right side of the assembled front piece. Align the pocket lines and pin.