

FROM THE FOUNDER OF THE #VIKISEWS BRAND

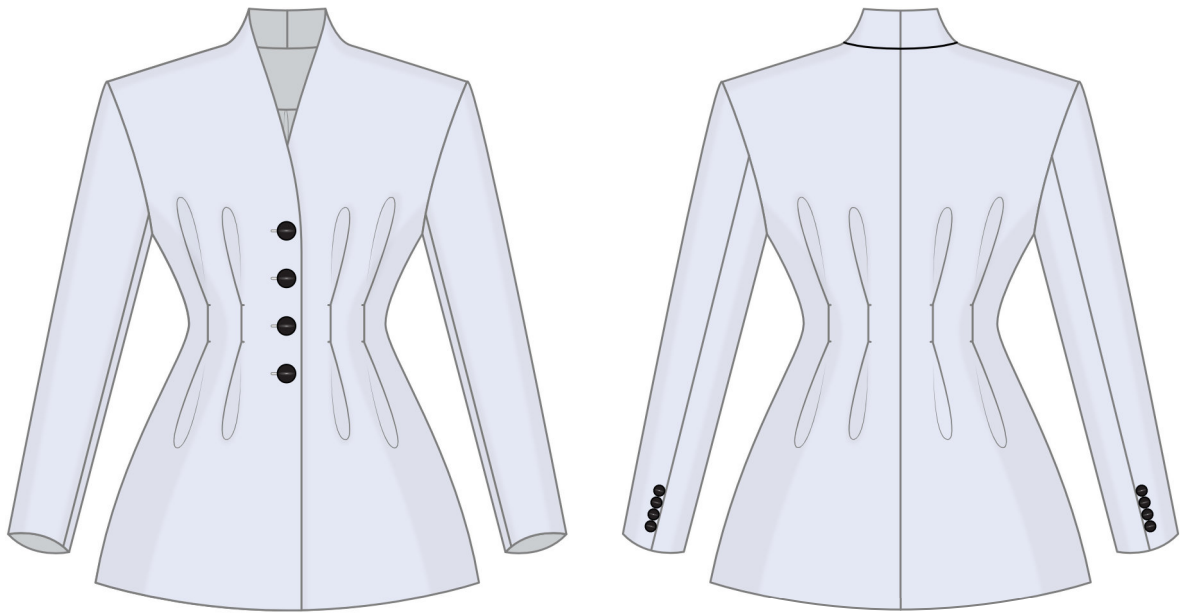


Back in 2016, when I was working on my first set of sewing instructions, I was trying to write them in such a way that even a complete beginner could easily understand and use them to create their very first garment. These instructions laid the foundation for the Vikisews brand, its vision and its mission. I wanted to create modern patterns with the utmost detailed and clear instructions.

Now, with each new collection we are constantly improving our instructions, amending them and adding more relevant details. By the time the final product reaches you, our drafters, correctors, and editors would have spent weeks perfecting every word and every photograph. If you compile a few of our instructions together, you will get a sewing manual that will assist you in sewing all kinds of garments at any difficulty level.

And I would be very happy if these instructions helped you to turn your hobby into a lifelong passion... Enjoy the process! Create your ultimate dream wardrobe! Wear your garments proudly for years to come!

If you have any questions, please contact us at info@vikisews.com — we are always there to help.



SOLEDAD PATTERN DESCRIPTION

Soledad is an oversized, fully lined blazer with a grown-on stand collar. It has two one-sided pleats on each side, both at the front and back. The blazer closes with buttons and buttonholes at the center front. The shoulder line is extended. The long, two-piece, set-in sleeves are decorated with buttons at the bottom of the elbow seam. Soledad is hip-length.



IMPORTANT!

The contents of this pattern are copyright protected and belong exclusively to Vikisews. You may use Vikisews patterns for personal use. It is prohibited to share Vikisews patterns and instructions with third parties, as well as to publish patterns and instructions online for public access. **Non-compliance with the mentioned rules is a violation of the US copyright law and may result in civil liability and criminal prosecution.**

You may use Vikisews patterns for commercial use, to sew custom-made garments and/or create fashion collections, on the condition that the patterns are solely used in a manufacturing setting and are not further shared with individuals.

TOTAL EASE ALLOWANCE

	Bust ease	Waistline ease	Hipline ease	Upper arm ease
cm	29.1–40	6.6–7.2	48.3–88.1	9.4–7
inches	11 1/2–15 3/4	2 5/8–2 7/8	19–34 5/8	3 3/4–2 3/4

GARMENT LENGTH, SLEEVE LENGTH

Height, cm	Back length, cm	Sleeve length, cm	Stand collar height, cm
1 (154–160)	69.7–73.3	59.4–61.5	4.3–5.9
2 (162–168)	72.7–76.3	61.4–63.5	4.3–5.9
3 (170–176)	75.7–79.2	63.4–65.5	4.3–5.9
4 (178–184)	78.7–82.2	65.4–67.5	4.3–5.9

Height, ft	Back length, in	Sleeve length, in	Stand collar height, in
1 (5'1"–5'3")	27 1/2–28 7/8	23 3/8–24 1/4	1 3/4–2 3/8
2 (5'4"–5'6")	28 5/8–30	24 1/8–25	1 3/4–2 3/8
3 (5'7"–5'9")	29 3/4–31 1/8	25–25 3/4	1 3/4–2 3/8
4 (5'10"–6'1")	31–32 3/8	25 3/4–26 5/8	1 3/4–2 3/8

SUGGESTED FABRIC

To sew this blazer, choose suiting fabrics with the following properties:

- medium weight, structured, non-stretch or low-stretch
- the fiber content can include natural fibers (wool), artificial fibers (viscose), blends (wool + silk, wool + polyester, etc.), and synthetics (polyester)
- the following fabrics are recommended: crepe suiting, wool suiting.

Attention! We do not recommend stretchy, soft, lightweight (dress-weight wool), and loosely woven suiting fabrics.

For the lining, choose lining fabrics made of artificial fibers (viscose), blends (viscose + elastane, viscose + polyester), or synthetics (polyester, polyester + elastane).

The blazer in the photo is made of crepe suiting. The fabric is medium weight, structured, and non-stretch. The fiber content is 60% wool and 40% polyester. The fabric weight is 300 g/m².
The lining is a blend of 55% polyester and 45% viscose. The lining fabric weight is 90 g/m².

FABRIC AND NOTIONS REQUIREMENTS

1. Main fabric, 140 cm wide, 250–350 g/m², with a directional print/nap, in meters:

Height, cm	Size						
	34–36	38	40	42	44	46–48	50–52
1 (154–160)	1.55	1.65	1.7	1.75	1.8	2.35	2.4
2 (162–168)	1.6	1.7	1.75	1.8	1.85	2.4	2.5
3 (170–176)	1.65	1.75	1.8	1.85	1.9	2.45	2.55
4 (178–184)	1.7	1.8	1.9	1.9	1.95	2.5	2.6

Main fabric, 55" wide, 250–350 g/m², with a directional print/nap, in yards:

Height, ft	Size						
	34–36	38	40	42	44	46–48	50–52
1 (5'1"–5'3")	1 3/4	1 3/4	1 7/8	1 7/8	2	2 5/8	2 5/8
2 (5'4"–5'6")	1 3/4	1 7/8	1 7/8	2	2	2 5/8	2 3/4
3 (5'7"–5'9")	1 3/4	1 7/8	2	2	2 1/8	2 5/8	2 3/4
4 (5'10"–6'1")	1 7/8	2	2 1/8	2 1/8	2 1/8	2 3/4	2 7/8

2. Lining fabric, 140 cm wide, 90–130 g/m², in meters:

Height, cm	Size							
	34	36–40	42	44	46	48	50	52
1 (154–160)	1.4	1.5	1.55	1.6	1.65	1.75	1.8	1.85
2 (162–168)	1.45	1.55	1.6	1.65	1.75	1.8	1.85	1.9
3 (170–176)	1.5	1.6	1.65	1.75	1.8	1.85	1.9	2
4 (178–184)	1.55	1.65	1.75	1.8	1.9	1.95	2	2.05

Lining fabric, 55" wide, 90–130 g/m², in yards:

Height, ft	Size							
	34	36–40	42	44	46	48	50	52
1 (5'1"–5'3")	1 1/2	1 5/8	1 3/4	1 3/4	1 3/4	1 7/8	2	2
2 (5'4"–5'6")	1 5/8	1 3/4	1 3/4	1 3/4	1 7/8	2	2	2 1/8
3 (5'7"–5'9")	1 5/8	1 3/4	1 3/4	1 7/8	2	2	2 1/8	2 1/8
4 (5'10"–6'1")	1 3/4	1 3/4	1 7/8	2	2 1/8	2 1/8	2 1/8	2 1/4

3. Knit or woven interfacing, 140 cm wide, 55 g/m², in meters:

Height, cm	Size						
	34	36	38	40–44	46–48	50	52
1 (154–160)	1.9	2	2.05	2.3	2.55	2.65	2.7
2 (162–168)	1.95	2.05	2.1	2.4	2.65	2.7	2.75
3 (170–176)	1.95	2.1	2.15	2.45	2.7	2.8	2.8
4 (178–184)	2.05	2.1	2.2	2.5	2.75	2.85	2.9

Knit or woven interfacing, 55" wide, 55 g/m², in yards:

Height, ft	Size						
	34	36	38	40–44	46–48	50	52
1 (5'1"–5'3")	2 1/8	2 1/8	2 1/4	2 1/2	2 3/4	2 7/8	3
2 (5'4"–5'6")	2 1/8	2 1/4	2 1/4	2 5/8	2 7/8	3	3
3 (5'7"–5'9")	2 1/8	2 1/4	2 3/8	2 5/8	3	3	3
4 (5'10"–6'1")	2 1/4	2 1/4	2 3/8	2 3/4	3	3 1/8	3 1/8

4. Bleached calico (additional fabric 1),
150 cm wide, 125 g/m², in meters:

Height, cm	Size	
	34–50	52
1 (154–160)	0.2	0.25
2 (162–168)	0.2	0.25
3 (170–176)	0.2	0.25
4 (178–184)	0.2	0.25

Bleached calico (additional fabric 1),
59" wide, 125 g/m², in yards:

Height, ft	Size	
	34–52	
1 (5'1"–5'3")	1/4	
2 (5'4"–5'6")	1/4	
3 (5'7"–5'9")	1/4	
4 (5'10"–6'1")	1/4	

5. Sew-in buckram (additional fabric 2),
150 cm wide, 170 g/m², in meters:

Height, cm	Size	
	34	36–52
1 (154–160)	0.25	0.3
2 (162–168)	0.25	0.3
3 (170–176)	0.25	0.3
4 (178–184)	0.25	0.3

Sew-in buckram (additional fabric 2),
59" wide, 170 g/m², in yards:

Height, ft	Size	
	34	36–52
1 (5'1"–5'3")	1/4	3/8
2 (5'4"–5'6")	1/4	3/8
3 (5'7"–5'9")	1/4	3/8
4 (5'10"–6'1")	1/4	3/8

IMPORTANT! When purchasing fabric, please account for shrinkage and buy 5% more than required.

6. Stitched bias-cut fusible stay tape with stitch reinforcement, 1.5 cm (5/8") wide — 3.5 m (3 7/8 yd)

7. Elastic, 2 cm (3/4") wide — 57–91 cm (22 1/2–35 7/8"), depending on the size. The exact elastic length is specified in the pattern

8. Grosgrain ribbon, 1.5–2 cm (5/8–3/4") wide — 73–111 cm (28 3/4–43 3/4")

9. Four buttons, 2–2.2 cm (3/4–7/8") in diameter

10. Eight buttons, 1.5–1.7 cm (5/8") in diameter

11. One pair of layered shoulder pads, 1.5–2 cm (5/8–3/4") tall

12. One pair of sleeve heads

13. Matching thread for the main fabric — 1 spool for the sewing machine

14. Matching thread for the lining fabric — 1 spool for the sewing machine

TOOLS AND EQUIPMENT

- sewing machine for construction
- buttonhole foot for the sewing machine
- stitch-in-the-ditch foot for the sewing machine (optional)
- elastic threader (may be replaced with a safety pin)

PATTERN PIECES LIST

1. From main fabric:

- front — cut 2
- back — cut 2
- top sleeve — cut 2
- bottom sleeve — cut 2
- front facing — cut 2
- back neck facing — cut 1

2. From lining fabric:

- front lining — cut 2
- back lining — cut 2
- top sleeve lining — cut 2
- bottom sleeve lining — cut 2
- casing — cut 1 on fold

3. From additional fabric 1 (bleached calico):

- shoulder pad — cut 4

4. From additional fabric 2 (buckram):

- shoulder pad — cut 2

5. From interfacing:

- front — cut 2
- back — cut 2
- front facing — cut 2
- back neck facing — cut 1
- shoulder pad — cut 4

IMPORTANT! Don't forget to transfer all pattern markings and notches onto the fabric.

Partially interface the following pieces:

- top sleeve — 2 pieces (interface the sleeve cap and the bottom part of the sleeve outlined on the pattern)
- bottom sleeve — 2 pieces (interface the sleeve cap and the bottom part of the sleeve outlined on the pattern).

Additionally, interface the following sections outlined on the pattern:

- front (2nd interfacing layer) — 2 pieces
- front (3rd interfacing layer) — 2 pieces
- back (2nd interfacing layer) — 2 pieces
- back (3rd interfacing layer) — 2 pieces.

SEAM ALLOWANCES

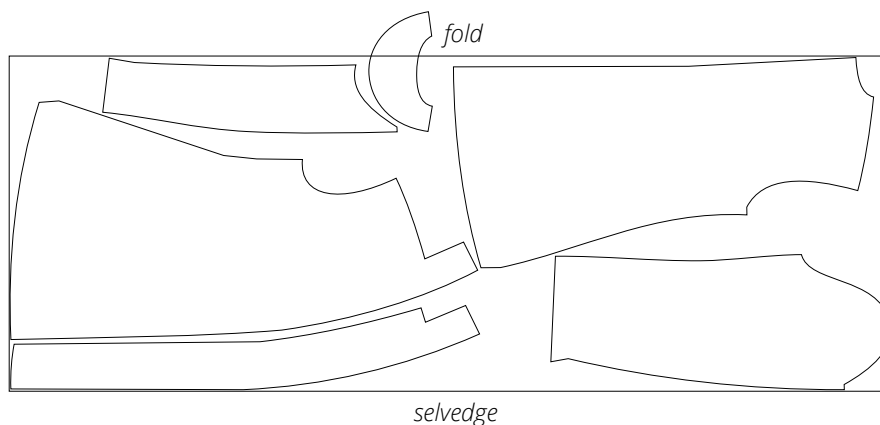
All pattern pieces include seam allowances as follows:

- garment hem allowance — 4 cm (1 5/8")
- sleeve hem allowance — 4 cm (1 5/8")
- all other edges — 1 cm (3/8").

Take this into account when laying out pattern pieces on the fabric.

CUTTING LAYOUT

Main fabric, 140 cm (55") wide, with a directional print/nap,
cut on fold, for sizes 34–40 in all heights



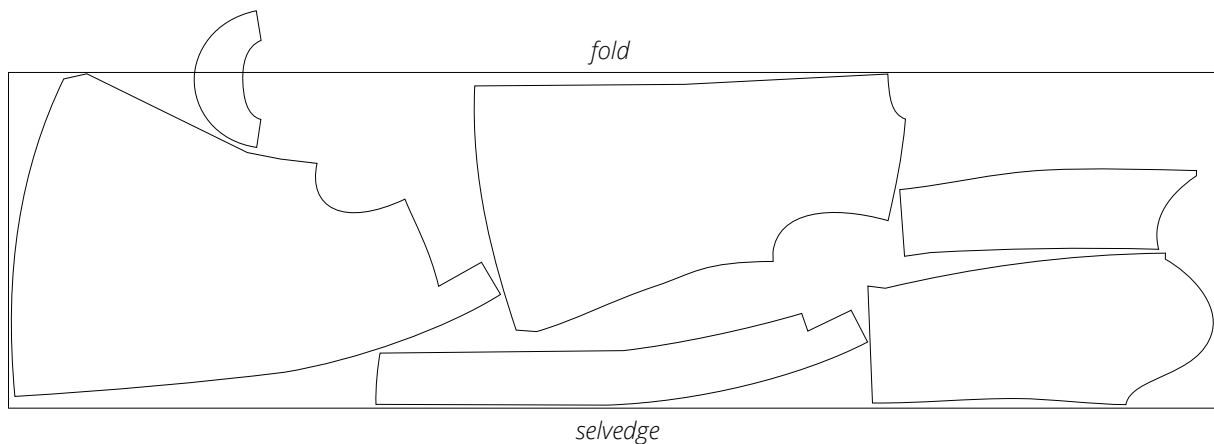
Attention! Cut only one back neck facing piece on a single layer out of the leftover fabric.

Main fabric, 140 cm (55") wide, with a directional print/nap,
cut on fold, for sizes 42-44 in all heights



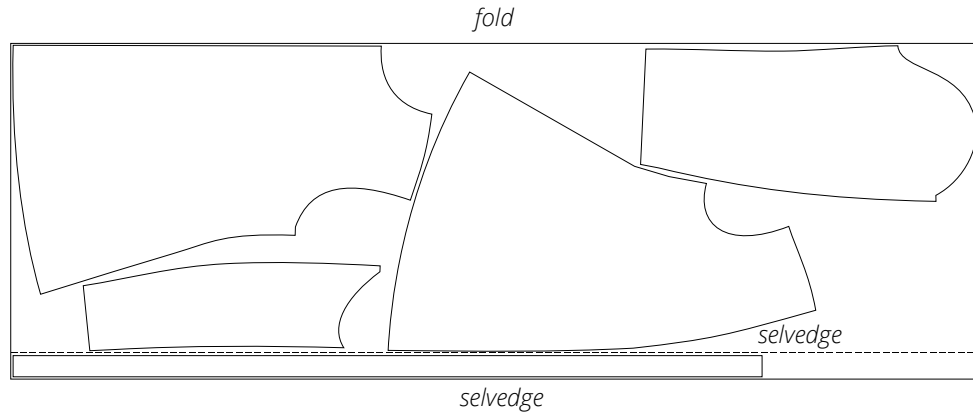
Attention! Cut the sleeves and back neck facing piece on a single layer out of the leftover fabric. Cut one back neck facing only.

Main fabric, 140 cm (55") wide, with a directional print/nap,
cut on fold, for sizes 46-52 in all heights



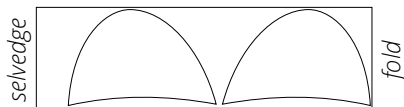
Attention! Cut only one back neck facing piece on a single layer out of the leftover fabric.

Lining fabric, 140 cm (55") wide, with a directional print, cut on a partial fold, for all sizes in all heights

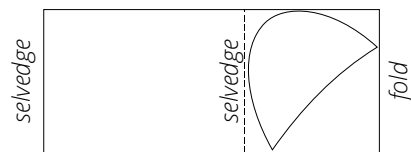


Attention! Cut one casing piece only.

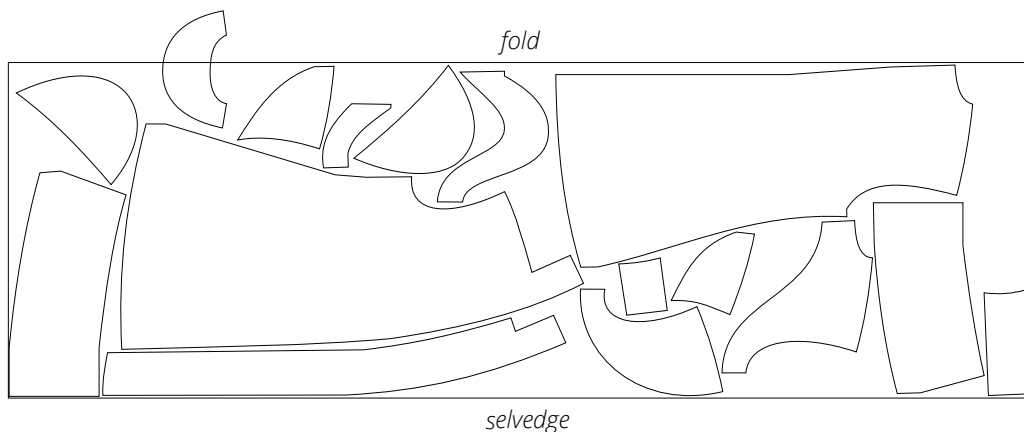
Additional fabric 1, 140 cm (55") wide, cut on fold and in one direction, for all sizes in all heights



Additional fabric 2, 140 cm (55") wide, cut on a partial fold in one direction, for all sizes in all heights



Interfacing, 140 cm (55") wide, cut on fold and in one direction, for sizes 34-38 in all heights



Attention! Cut only one back neck facing piece on a single layer out of the leftover fabric.

fold

selvedge

Interfacing, 140 cm (55") wide, cut on fold and in one direction,
for sizes 46-52 in all heights

fold

selvedge

READY? LET'S GET SEWING!



Press the pleats towards the side edges.



Place the back pieces right sides together. Align the center edges, match the notches, and pin. Machine-stitch the center back seam, backstitching at the beginning and end.



Press the center back seam allowances open.