

FROM THE FOUNDER OF THE #VIKISEWS BRAND

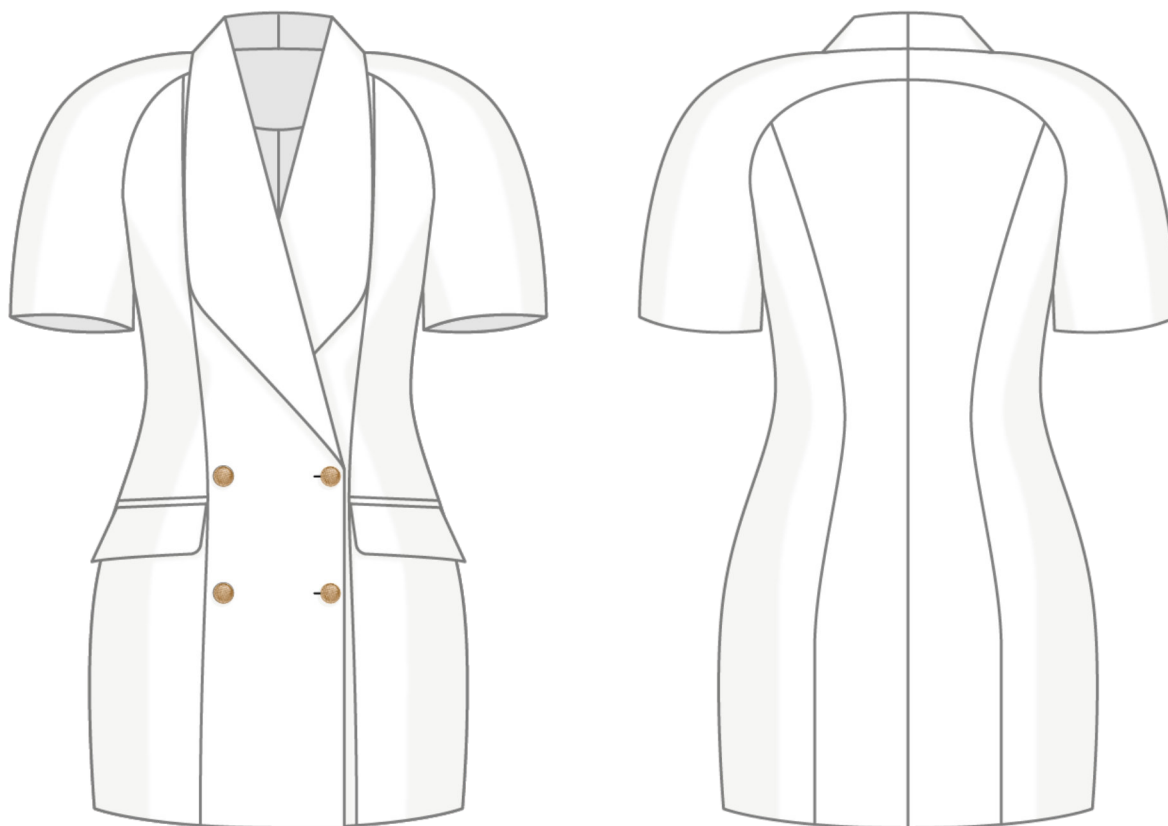


Back in 2016, when I was working on my first set of sewing instructions, I was trying to write them in such a way that even a complete beginner could easily understand and use them to create their very first garment. These instructions laid the foundation for the Vikisews brand, its vision and its mission. I wanted to create modern patterns with the utmost detailed and clear instructions.

Now, with each new collection we are constantly improving our instructions, amending them and adding more relevant details. By the time the final product reaches you, our drafters, correctors, and editors would have spent weeks perfecting every word and every photograph. If you compile a few of our instructions together, you will get a sewing manual that will assist you in sewing all kinds of garments at any difficulty level.

And I would be very happy if these instructions helped you to turn your hobby into a lifelong passion... Enjoy the process! Create your ultimate dream wardrobe! Wear your garments proudly for years to come!

If you have any questions, please contact us at info@vikisews.com — we are always there to help.



CELESTINE PATTERN DESCRIPTION

Celestine is a semi-fitted blazer-style dress with a defined waist. It is fully lined and features front and back side panels. The back is shaped with a center seam and princess seams. The bust dart is transferred to the shoulder seam. There are flap pockets with welts on the front set into the side panel seams. The dress has an extended shoulder line and two-piece raglan sleeves that fall above the elbow. It closes with a double-breasted button front closure and is above-knee length.



IMPORTANT!

The contents of this pattern are copyright protected and belong exclusively to Vikisews. You may use Vikisews patterns for personal use. It is prohibited to share Vikisews patterns and instructions with third parties, as well as to publish patterns and instructions online for public access. **Non-compliance with the mentioned rules is a violation of the US copyright law and may result in civil liability and criminal prosecution.**

You may use Vikisews patterns for commercial use, to sew custom-made garments and/or create fashion collections, on the condition that the patterns are solely used in a manufacturing setting and are not further shared with individuals.

TOTAL EASE ALLOWANCE

	Bust ease	Waistline ease	Hipline ease	Upper arm ease
cm	0.7–5.3	6.6–12.8	8.5–9.2	10.4–12.3
inches	1/4–2 1/8	2 5/8–5	3 3/8–3 5/8	4 1/8–4 7/8

GARMENT LENGTH, SLEEVE LENGTH

Height, cm	Back length, cm	Sleeve length including shoulder width, cm
1 (154–160)	77.5–79.3	37.2–46.4
2 (162–168)	81.5–83.3	38.9–48.2
3 (170–176)	85.5–87.3	41–49.8
4 (178–184)	89.5–91.3	42.8–51.6

Height, ft	Back length, in	Sleeve length including shoulder width, in
1 (5'1"–5'3")	30 1/2–31 1/4	14 5/8–18 1/4
2 (5'4"–5'6")	32 1/8–32 3/4	15 3/8–19
3 (5'7"–5'9")	33 5/8–34 3/8	16 1/8–19 5/8
4 (5'10"–6'1")	35 1/4–36	16 7/8–20 3/8

SUGGESTED FABRIC

To sew this dress, choose medium-weight, pliable, structured, non-stretch or low-stretch dress-weight and suiting fabrics made of natural fibers, artificial fibers, blends, or synthetics.

Recommended fabrics: wool suiting, velvet suiting, jacquard, denim.

Attention! We do not recommend stretchy, soft, lightweight (dress-weight wool), and loosely woven heavyweight suiting fabrics.

For the lining, we recommend lining fabrics made of artificial fibers, synthetic fibers, or blends.

The dress in the photos is made of jacquard suiting. The fabric is medium weight, structured, and low-stretch. The fiber content is 72% silk and 28% cotton. The fabric weight is 250 g/m².

The fiber content of the lining is 100% viscose. The lining fabric weight is 130 g/m².

FABRIC AND NOTIONS REQUIREMENTS

1. Main fabric, 140 cm wide, with a directional print/nap, in meters:

Height, cm	Size					
	34-36	38-40	42	44-46	48	50-52
1 (154-160)	1.85	1.9	2	2	2.25	2.3
2 (162-168)	1.95	2	2.1	2.1	2.35	2.4
3 (170-176)	2.05	2.1	2.15	2.2	2.45	2.5
4 (178-184)	2.1	2.15	2.25	2.25	2.55	2.6

Main fabric, 55" wide, with a directional print/nap, in yards:

Height, ft	Size				
	34-36	38-40	42-46	48	50-52
1 (5'1"-5'3")	2	2 1/8	2 1/8	2 1/2	2 1/2
2 (5'4"-5'6")	2 1/8	2 1/8	2 1/4	2 5/8	2 5/8
3 (5'7"-5'9")	2 1/4	2 1/4	2 3/8	2 5/8	2 3/4
4 (5'10"-6'1")	2 1/4	2 3/8	2 1/2	2 3/4	2 7/8

2. Lining fabric, 140 cm wide, with a directional print, in meters:

Height, cm	Size				
	34	36	38-44	46-50	52
1 (154-160)	0.9	1.05	1.15	1.2	1.25
2 (162-168)	0.95	1.1	1.2	1.25	1.3
3 (170-176)	1	1.15	1.25	1.3	1.35
4 (178-184)	1.05	1.2	1.3	1.35	1.4

Lining fabric, 55" wide, with a directional print, in yards:

Height, ft	Size				
	34	36	38-44	46-50	52
1 (5'1"-5'3")	1	1 1/8	1 1/4	1 1/4	1 3/8
2 (5'4"-5'6")	1	1 1/4	1 1/4	1 3/8	1 3/8
3 (5'7"-5'9")	1 1/8	1 1/4	1 3/8	1 3/8	1 1/2
4 (5'10"-6'1")	1 1/8	1 1/4	1 3/8	1 1/2	1 1/2

3. Lightweight interfacing, knit or woven, 140 cm wide, in meters:

Height, cm	Size							
	34	36	38	40	42	44-46	48	50-52
1 (154-160)	1.85	1.9	1.9	1.95	2.1	2.15	2.35	2.45
2 (162-168)	1.95	2	2	2.05	2.15	2.2	2.45	2.5
3 (170-176)	2.05	2.05	2.1	2.15	2.25	2.3	2.55	2.6
4 (178-184)	2.15	2.15	2.2	2.2	2.35	2.4	2.65	2.7

Lightweight interfacing, knit or woven, 55" wide, in yards:

Height, ft	Size						
	34	36-38	40	42	44-46	48	50-52
1 (5'1"-5'3")	2	2 1/8	2 1/8	2 1/4	2 3/8	2 5/8	2 5/8
2 (5'4"-5'6")	2 1/8	2 1/8	2 1/4	2 3/8	2 3/8	2 5/8	2 3/4
3 (5'7"-5'9")	2 1/4	2 1/4	2 3/8	2 1/2	2 1/2	2 3/4	2 7/8
4 (5'10"-6'1")	2 3/8	2 3/8	2 3/8	2 5/8	2 5/8	2 7/8	3

IMPORTANT! When purchasing fabric, please account for shrinkage and buy 5% more than required.

4. Stitched bias-cut fusible stay tape with stitch reinforcement, 1.5 cm (5/8") wide – 2.9 m (3 1/8 yd).
5. Stitched straight-grain fusible stay tape, 1 cm (3/8") wide – 2 m (2 1/8 yd).
6. One pair of raglan shoulder pads.
7. Four buttons, 2.2 cm (7/8") in diameter.
8. One button, 1.5 cm (5/8") in diameter.
9. Matching thread for the main fabric – 2 spools.
10. Matching thread for the lining fabric – 2 spools.

TOOLS AND EQUIPMENT

- sewing machine for construction
- buttonhole foot for the sewing machine

PATTERN PIECES LIST

1. From main fabric:

- center front – cut 2
- top side front – cut 2
- bottom side front – cut 2
- center back – cut 2
- side back – cut 2
- front sleeve – cut 2
- back sleeve – cut 2
- pocket welt – cut 2
- top flap – cut 2
- pocket top lining – cut 2
- front facing – cut 2
- back neck facing – cut 1

2. From lining fabric:

- front lining – cut 2
- center back lining – cut 1 on fold
- side back lining – cut 2
- front sleeve lining – cut 2
- back sleeve lining – cut 2
- pocket bottom lining – cut 2
- bottom flap – cut 2

3. From interfacing:

- center front – cut 2
- top side front – cut 2
- bottom side front – cut 2
- center back – cut 2
- side back – cut 2
- front sleeve – cut 2
- back sleeve – cut 2
- pocket welt – cut 2
- top flap – cut 2
- pocket top lining – cut 2
- front facing – cut 2
- back neck facing – cut 1

IMPORTANT! Don't forget to transfer all pattern markings and notches onto the fabric.

Additionally, cut the following pieces from interfacing:

- 2 pieces for the front sleeve as marked on the pattern
- 2 pieces for the back sleeve as marked on the pattern

The interfacing pieces should be cut on the straight grain (parallel to the selvedge).

SEAM ALLOWANCES

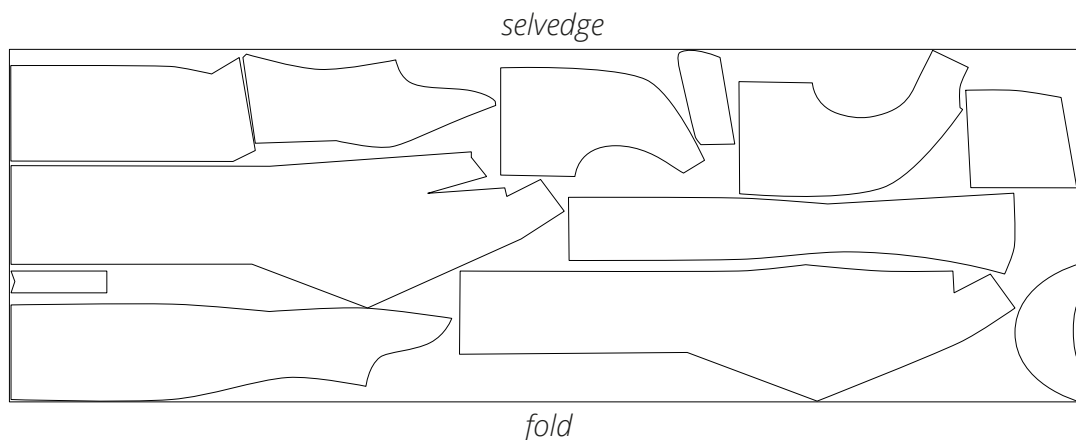
All pattern pieces include seam allowances as follows:

- garment hem allowance – 4 cm (1 5/8")
- sleeve hem allowance – 4 cm (1 5/8")
- all other edges – 1 cm (3/8").

Take this into account when laying out pattern pieces on the fabric.

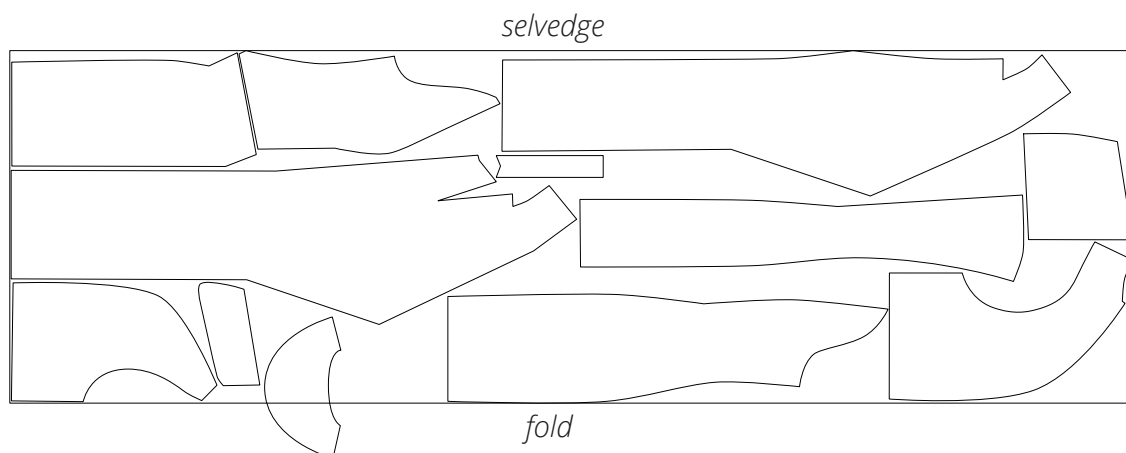
CUTTING LAYOUT

Main fabric, 140 cm (55") wide, with a directional print/nap,
cut on fold, for sizes 34–40 in all heights



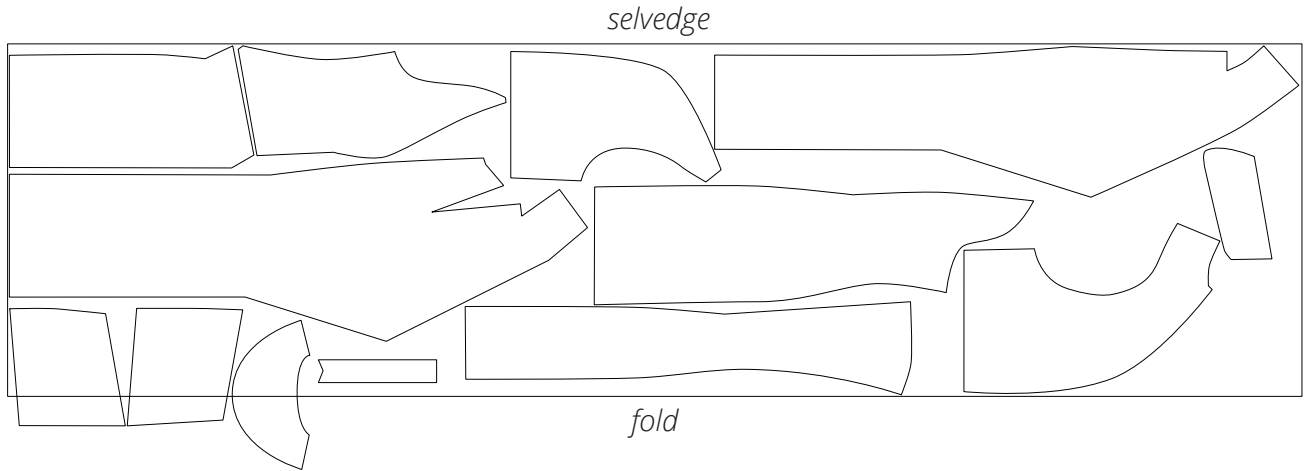
Important! Cut only one back neck facing piece.

Main fabric, 140 cm (55") wide, with a directional print/nap,
cut on fold, for sizes 42–46 in all heights



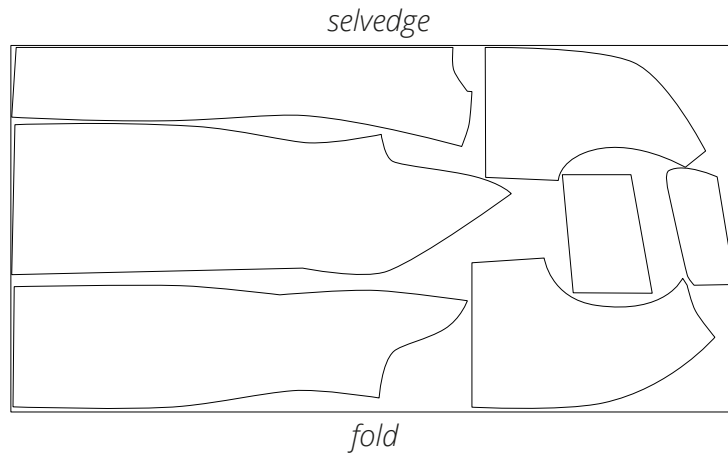
Important! Cut only one back neck facing piece on a single layer out of leftover fabric.

Main fabric, 140 cm (55") wide, with a directional print/nap,
cut on fold, for sizes 48-52 in all heights

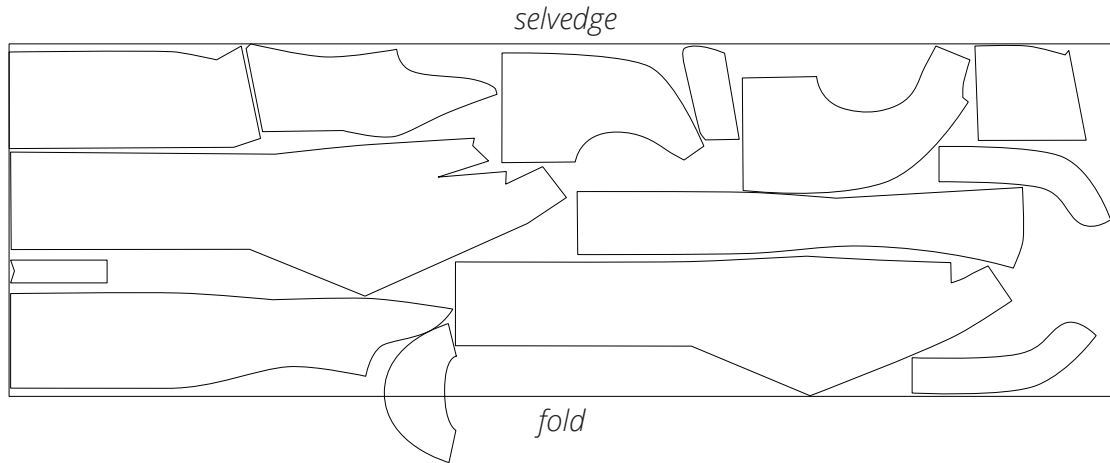


Important! Cut the back neck facing and pocket top lining pieces
on a single layer out of leftover fabric. Cut only one back
neck facing piece.

Lining fabric, 140 cm (55") wide, with a directional print,
cut on fold, for sizes 38-52 in all heights

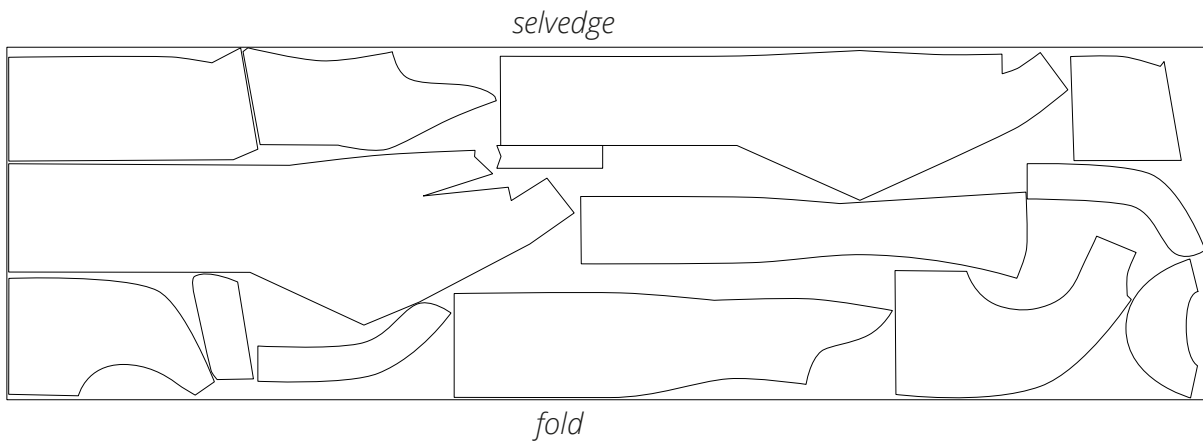


Interfacing, 140 cm (55") wide, cut on fold,
for sizes 34–40 in all heights



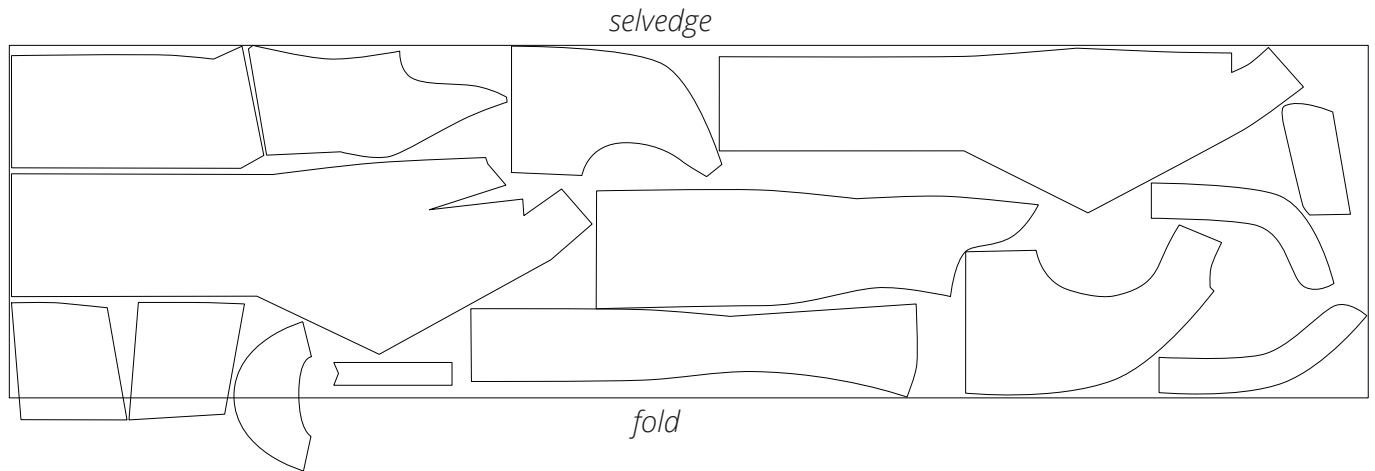
Important! Cut only one back neck facing piece out of leftover fabric on a single layer.

Interfacing, 140 cm (55") wide, cut on fold,
for sizes 42–46 in all heights



Important! Cut only one back neck facing piece.

Interfacing, 140 cm (55") wide, cut on fold,
for sizes 48–52 in all heights



Important! Cut the back neck facing and pocket top lining pieces on a single layer out of leftover fabric. Cut only one back neck facing piece.

READY? LET'S GET SEWING!



Stitch on the sewing machine, backstitching at the beginning and end of the seam.



Press the seam allowances towards the top side front piece.



Place the pocket bottom lining right sides together with the bottom side front piece. Align and pin the top edges.