

FROM THE FOUNDER OF THE #VIKISEWS BRAND

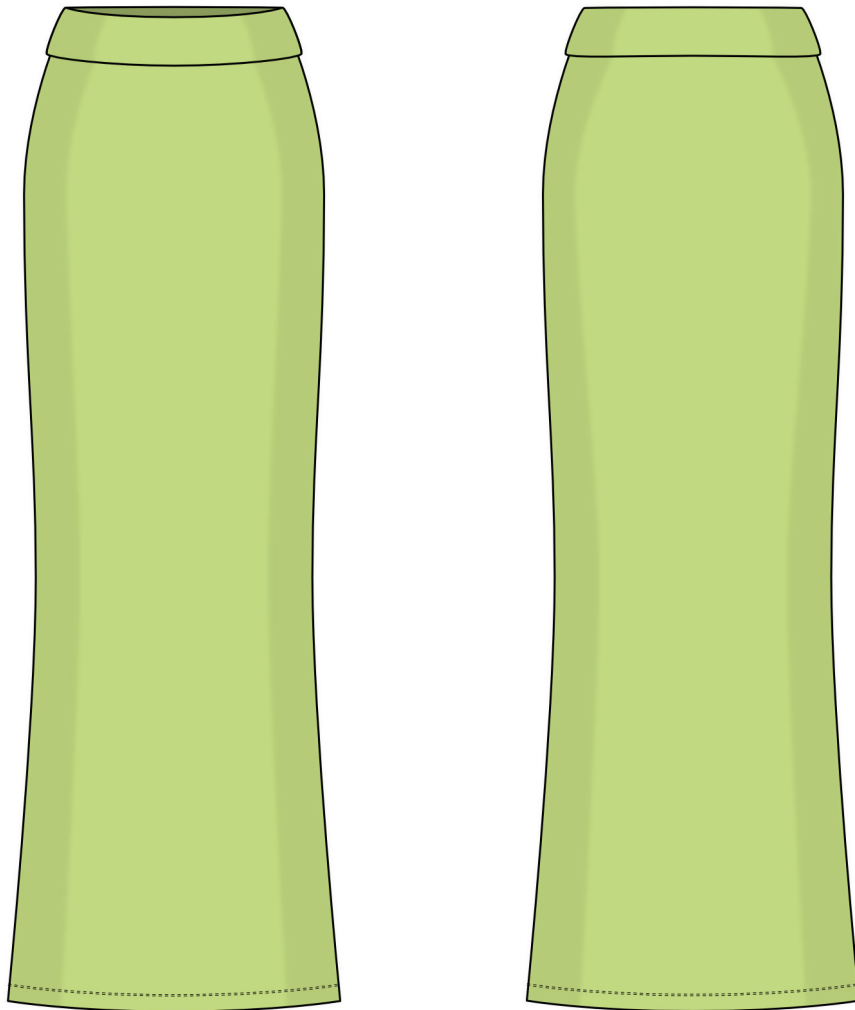


Back in 2016, when I was working on my first set of sewing instructions, I was trying to write them in such a way that even a complete beginner could easily understand and use them to create their very first garment. These instructions laid the foundation for the Vikisews brand, its vision and its mission. I wanted to create modern patterns with the utmost detailed and clear instructions.

Now, with each new collection we are constantly improving our instructions, amending them and adding more relevant details. By the time the final product reaches you, our drafters, correctors, and editors would have spent weeks perfecting every word and every photograph. If you compile a few of our instructions together, you will get a sewing manual that will assist you in sewing all kinds of garments at any difficulty level.

And I would be very happy if these instructions helped you to turn your hobby into a lifelong passion... Enjoy the process! Create your ultimate dream wardrobe! Wear your garments proudly for years to come!

If you have any questions, please contact us at info@vikisews.com — we are always there to help.



JALILA PATTERN DESCRIPTION

Jalila is a close-fitting ankle-length skirt with a slight trapeze silhouette and a turn-down elasticated waistband.



IMPORTANT!

The contents of this pattern are copyright protected and belong exclusively to Vikisews. You may use Vikisews patterns for personal use. It is prohibited to share Vikisews patterns and instructions with third parties, as well as to publish patterns and instructions online for public access. **Non-compliance with the mentioned rules is a violation of the US copyright law and may result in civil liability and criminal prosecution.**

You may use Vikisews patterns for commercial use, to sew custom-made garments and/or create fashion collections, on the condition that the patterns are solely used in a manufacturing setting and are not further shared with individuals.

TOTAL EASE ALLOWANCE

	Waistline ease (estimated)	Hipline ease
cm	11.5	-3.2
inches	4 1/2	-1 1/4

GARMENT LENGTH

Height, cm	Garment length including waistband, cm	Height, ft	Garment length including waistband, in
1 (154–160)	97	1 (5'1"–5'3")	38 1/4
2 (162–168)	101	2 (5'4"–5'6")	39 3/4
3 (170–176)	105	3 (5'7"–5'9")	41 3/8
4 (178–184)	109	4 (5'10"–6'1")	42 7/8

SUGGESTED FABRIC

To sew this skirt, choose soft, medium-weight, stretchy knit fabrics made of natural fibers, artificial fibers, blends, or synthetics.

The following fabrics are recommended: sweater knits, modal fabric, ribbed knits, knitted faux mink fabric. The stretch factor should be 1.5–1.8.

You can determine the stretch factor of the fabric yourself. Mark 10 cm (4") along the crosswise grain of the fabric, lay a ruler next to the marked section, and stretch the fabric. Divide the measurement you get by 10.

The skirt in the photos is made of knitted faux mink fabric. The fabric is medium weight, soft, and stretchy. The fiber content is 69% faux mink fur and 31% polyester. The fabric weight is 280 g/m². The stretch factor is 1.8.

FABRIC AND NOTIONS REQUIREMENTS

1. Main fabric, 130 cm wide, with a directional print/nap, in meters:

Height, cm	Size
	34-52
1 (154-160)	2.25
2 (162-168)	2.3
3 (170-176)	2.4
4 (178-184)	2.45

Main fabric, 140 cm wide, with a directional print/nap, in meters:

Height, cm	Size	
	34-36	38-52
1 (154-160)	1.25	2.25
2 (162-168)	1.25	2.3
3 (170-176)	1.3	2.4
4 (178-184)	1.35	2.45

Main fabric, 51" wide, with a directional print/nap, in yards:

Height, ft	Size
	34-52
1 (5'1"-5'3")	2 1/2
2 (5'4"-5'6")	2 1/2
3 (5'7"-5'9")	2 5/8
4 (5'10"-6'1")	2 5/8

Main fabric, 55" wide, with a directional print/nap, in yards:

Height, ft	Size	
	34-36	38-52
1 (5'1"-5'3")	1 3/8	2 1/2
2 (5'4"-5'6")	1 3/8	2 1/2
3 (5'7"-5'9")	1 3/8	2 5/8
4 (5'10"-6'1")	1 1/2	2 5/8

IMPORTANT! When purchasing fabric, please account for shrinkage and buy 5% more than required.

2. Elastic, 4 cm wide, for all heights. Length including seam allowances (specified on the pattern), cm:

Size									
34	36	38	40	42	44	46	48	50	52
62.5	66	70	73	77	80	83.5	87	90	93.5

Elastic, 1 5/8" wide, for all heights. Length including seam allowances (specified on the pattern), inches:

Size									
34	36	38	40	42	44	46	48	50	52
24 5/8	26	27 1/2	28 3/4	30 3/8	31 1/2	32 7/8	34 1/4	35 3/8	36 3/4

3. Matching thread — 5 spools (1 spool for the sewing machine + 4 spools for the overlocker / 3 spools for the coverstitch machine)

TOOLS AND EQUIPMENT

- sewing machine for construction
- overlocker for construction and finishing raw edges. It can be replaced with a stretch overlock stitch or a zigzag stitch on the sewing machine (overlock or zigzag stitch width 2–3 mm, stitch length 2.5 mm)
- coverstitch or coverlock machine for finishing the garment hem. It can be replaced with a twin needle on a regular sewing machine that can do a zigzag stitch
- elastic threader (can be replaced with a safety pin)

IMPORTANT! We recommend using specialty needles when working with knit fabrics (for example, *STRETCH*, *SUPER STRETCH*, *JERSEY*, etc.). When sewing, a ball-shaped needle point pushes the knit loops apart without piercing the threads.

PATTERN PIECES LIST

From main fabric:

- front — cut 1 on fold
- back — cut 1 on fold
- waistband — cut 1

IMPORTANT! Don't forget to transfer all pattern markings and notches onto the fabric.

IMPORTANT! The pattern pieces that have the "face" inscription on them should be placed with the blank side onto the right side of fabric when cutting.

SEAM ALLOWANCES

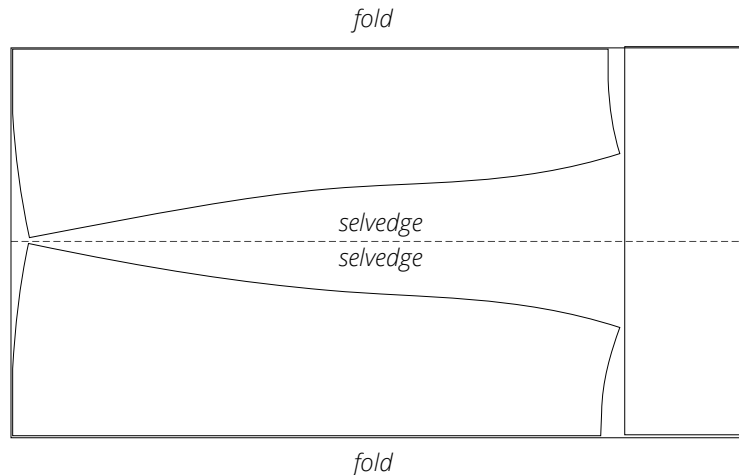
All pattern pieces include seam allowances as follows:

- garment hem allowance — 2.5 cm (1")
- all other edges — 1 cm (3/8")

Take this into account when laying out pattern pieces on the fabric.

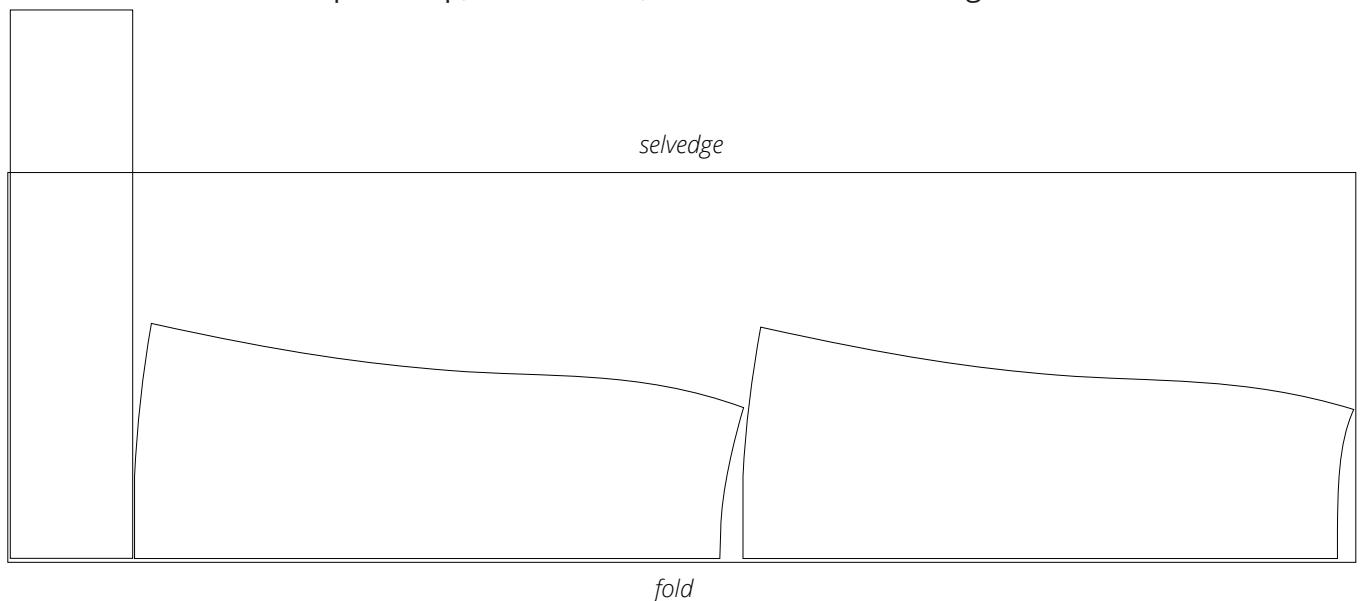
CUTTING LAYOUT

Main fabric, 140 cm (55") wide, with a directional print/nap, cut with two folds, for sizes 34–36 in all heights



Important! Cut only one waistband piece on a single layer out of leftover fabric.

Main fabric, 140 cm (55") wide, with a directional print/nap, cut on fold, for sizes 38–52 in all heights; main fabric, 130 cm (51") wide, with a directional print/nap, cut on fold, for all sizes in all heights



Important! Cut only one waistband piece on a single layer out of leftover fabric.

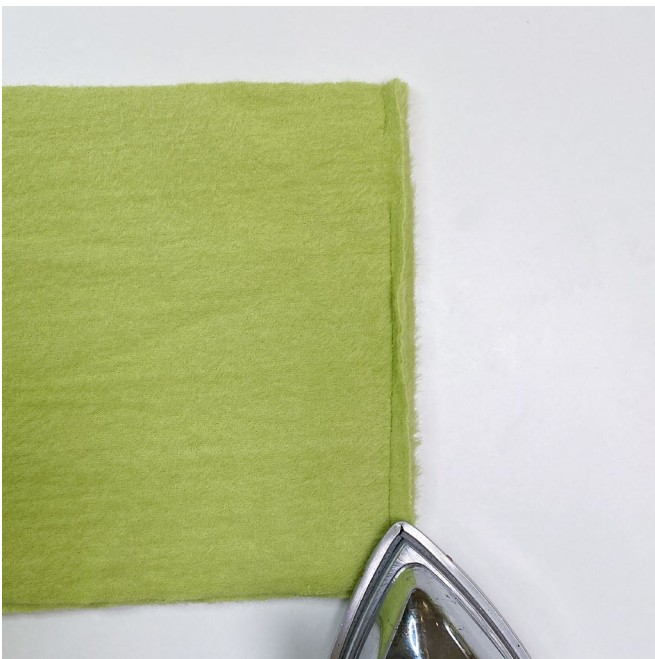
READY? LET'S GET SEWING!



Press the seam allowances towards the front piece.



Fold the waistband piece right sides together. Transfer the elastic opening markings from the pattern to the waistband piece. Align the left side edges, match the notches, and pin.



Stitch on the sewing machine; leave an opening for threading the elastic. Backstitch at the beginning and end of the seam.

Press the seam flat.