

FROM THE FOUNDER OF THE #VIKISEWS BRAND



Back in 2016, when I was working on my first set of sewing instructions, I was trying to write them in such a way that even a complete beginner could easily understand and use them to create their very first garment. These instructions laid the foundation for the Vikisews brand, its vision and its mission. I wanted to create modern patterns with the utmost detailed and clear instructions.

Now, with each new collection we are constantly improving our instructions, amending them and adding more relevant details. By the time the final product reaches you, our drafters, correctors, and editors would have spent weeks perfecting every word and every photograph. If you compile a few of our instructions together, you will get a sewing manual that will assist you in sewing all kinds of garments at any difficulty level.

And I would be very happy if these instructions helped you to turn your hobby into a lifelong passion... Enjoy the process! Create your ultimate dream wardrobe! Wear your garments proudly for years to come!

If you have any questions, please contact us at info@vikisews.com — we are always there to help.



ASWARI PATTERN DESCRIPTION

Aswari is a close-fitting blouse with an accentuated waist due to the waist seam. The blouse has a low neckline and decorative buttons along the center front seam. The blouse closes with a separating zipper in the center back seam. The long set-in sleeves are puffy at the top and tapered towards the bottom, with an elastic casing at the top of the sleeve cap. Aswari is hip-length.



IMPORTANT!

The contents of this pattern are copyright protected and belong exclusively to Vikisews. You may use Vikisews patterns for personal use. It is prohibited to share Vikisews patterns and instructions with third parties, as well as to publish patterns and instructions online for public access. **Non-compliance with the mentioned rules is a violation of the US copyright law and may result in civil liability and criminal prosecution.**

You may use Vikisews patterns for commercial use, to sew custom-made garments and/or create fashion collections, on the condition that the patterns are solely used in a manufacturing setting and are not further shared with individuals.

TOTAL EASE ALLOWANCE

	Bust ease	Waistline ease	Upper arm ease
cm	2.7–4.8	1.5–3.8	17.9–13.9
inches	1 1/8–1 7/8	5/8–1 1/2	7–5 1/2

GARMENT LENGTH, SLEEVE LENGTH

Height, cm	Back length from waist down, cm	Sleeve length including part of shoulder, cm
1 (154–160)	10.8–12.6	68.5–69.1
2 (162–168)	11.8–13.6	70.5–71.4
3 (170–176)	12.8–14.6	72.6–73.4
4 (178–184)	13.8–15.6	74.6–75.4

Height, ft	Back length from waist down, in	Sleeve length including part of shoulder, in
1 (5'1"–5'3")	4 1/4–5	27–27 1/4
2 (5'4"–5'6")	4 5/8–5 3/8	27 3/4–28 1/8
3 (5'7"–5'9")	5–5 3/4	28 5/8–28 7/8
4 (5'10"–6'1")	5 3/8–6 1/8	29 3/8–29 5/8

SUGGESTED FABRIC

To sew this blouse, choose lace fabrics with the following properties:

- soft, lightweight or medium weight, low-stretch or medium-stretch
- the fiber content can include natural fibers (cotton), artificial fibers (viscose), blends (cotton + polyester, etc.), and synthetics (polyester, polyester + elastane)

The following fabrics are recommended: allover lace fabrics with or without a scalloped edge, macramé lace, medium-weight guipure lace. The fabric should be low- to medium-stretch.

Attention! We do not recommend stretchy, non-stretch or very lightweight fabrics.

For the underlining, we recommend using soft, medium-weight tulle with small holes. Choose fabrics made of synthetic fibers (polyester + elastane).

For the casing pieces, we recommend using thin, opaque, dress-weight fabrics containing viscose or polyester.

The blouse in the photo is made of scalloped macramé lace. The fiber content is 65% cotton + 35% polyester. The fabric weight is 165 g/m².

For the underlining layer, we used tulle. The fiber content is 100% polyester. The fabric is medium weight, soft, and stretchy.

For the casing pieces, we used dress-weight fabric. The fiber content is 100% polyester. The fabric weight is 90 g/m².

FABRIC AND NOTIONS REQUIREMENTS

1. Main fabric (lace), 130–180 g/m², 120 cm wide, cut in one direction, in meters:

Height, cm	Size									
	34	36	38	40	42	44	46	48	50	52
1 (154–160)	0.8	0.8	0.85	0.85	0.85	0.9	0.9	0.95	1	1.05
2 (162–168)	0.85	0.85	0.9	0.9	0.9	0.9	0.95	0.95	1.05	1.1
3 (170–176)	0.85	0.9	0.9	0.9	0.95	0.95	1	1	1.1	1.15
4 (178–184)	0.9	0.9	0.9	0.95	0.95	0.95	1	1.05	1.15	1.15

Main fabric (lace), 130–180 g/m², 47" wide, cut in one direction, in yards:

Height, ft	Size						
	34	36	38–42	44	46–48	50	52
1 (5'1"–5'3")	7/8	7/8	7/8	1	1	1 1/8	1 1/8
2 (5'4"–5'6")	7/8	7/8	1	1	1	1 1/8	1 1/4
3 (5'7"–5'9")	7/8	1	1	1	1 1/8	1 1/4	1 1/4
4 (5'10"–6'1")	1	1	1	1	1 1/8	1 1/4	1 1/4

2. Additional dress-weight fabric, 90 g/m², 140 cm wide, for all heights, in meters:

Size	34-48	50-52
Meters	0.25	0.3

Additional dress-weight fabric, 90 g/m², 55" wide, for all heights, in yards:

Size	34-48	50-52
Yards	1/4	3/8

IMPORTANT! When purchasing fabric, please account for shrinkage and buy 5% more than required.

3. Underlining fabric (tulle), 13-20 g/m², 150 cm wide, for all heights, in meters:

Size	34	36	38	40	42	44	46-48	50	52
Meters	1.45	1.5	1.55	1.6	1.65	1.75	1.85	1.9	1.95

Underlining fabric (tulle), 13-20 g/m², 59" wide, for all heights, in yards:

Size	34-36	38-42	44	46-48	50-52
Yards	1 5/8	1 3/4	1 7/8	2	2 1/8

4. One separating zipper, 30 cm (11 3/4") long, for all sizes in all heights

5. Elastic, 1 cm (3/8") wide — 77-87 cm (30 3/8-34 1/4"), depending on the size. The exact elastic length is specified on the pattern.

6. Five buttons, 1-1.2 cm (3/8-1/2") in diameter

7. Matching thread — 5 spools (1 spool for the sewing machine + 4 spools for the overlocker)

TOOLS AND EQUIPMENT

- sewing machine for construction
- overlocker for finishing raw edges. This may be replaced with a stretch overlock stitch or a zigzag stitch on the sewing machine (overlock or zigzag stitch width 2-3 mm, stitch length 2.5 mm)
- stitch-in-the-ditch foot for the sewing machine (optional)
- one-sided foot for the sewing machine
- elastic threader (may be replaced with a safety pin)
- pliers to shorten the zipper

PATTERN PIECES LIST

1. From main fabric (lace):

- front — cut 2
- front peplum — cut 1 on fold
- back — cut 2
- back peplum — cut 2
- sleeve — cut 2

2. From additional dress-weight fabric:

- sleeve casing — cut 2

3. From underlining fabric (tulle):

- front — cut 2
- front peplum — cut 1 on fold
- back — cut 2
- back peplum — cut 2
- sleeve — cut 2

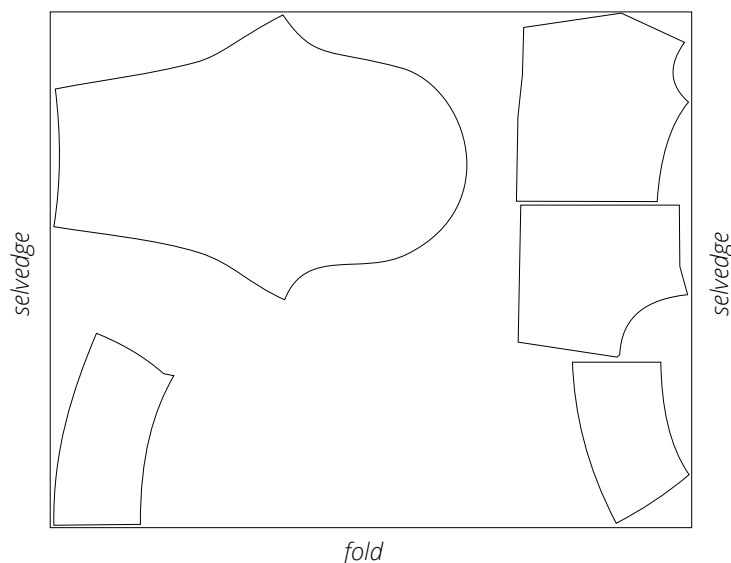
IMPORTANT! Don't forget to transfer all pattern markings and notches onto the fabric.

SEAM ALLOWANCES

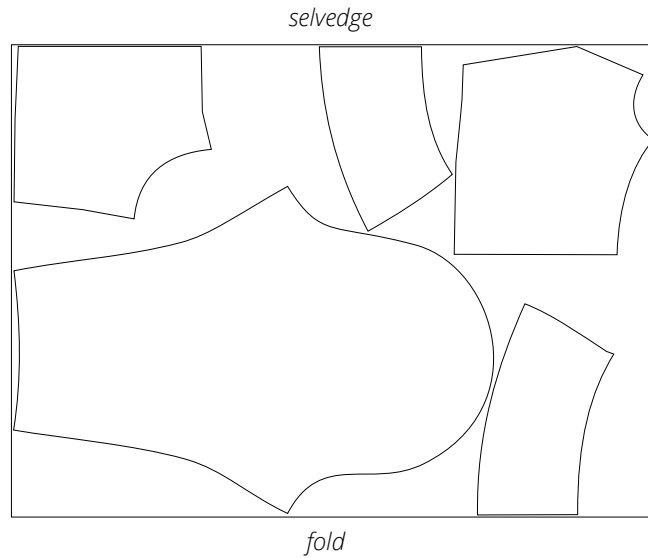
There are no allowances along the neckline as well as the garment and sleeve hemlines. Along other edges, the pattern pieces include 1 cm (3/8") seam allowances. Take this into account when laying out pattern pieces on the fabric.

CUTTING LAYOUT

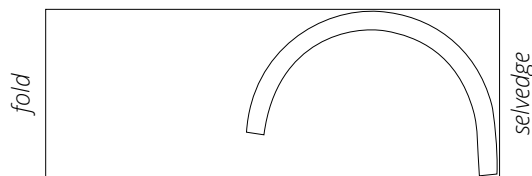
Main fabric (lace), 120 cm (47") wide, cut on fold in one direction, for all sizes in all heights



Underlining fabric (tulle), 150 cm (59") wide,
cut on fold in one direction, for all sizes in all heights



Additional dress-weight fabric, 140 cm (55") wide,
cut on fold, for all sizes in all heights



READY? LET'S GET SEWING!



Working from the wrong side, trim the loose top edge of the front piece close to the seam.

Important! Note that the back pieces should be cut out with a scalloped top edge. In case the back pieces have been cut out without a scalloped edge, finish the top edge using the same technique applied to the front pieces.



Using tailor's chalk, mark the dart lines on the wrong side of the front and back pieces.



Match and pin the dart legs on the wrong side of the front and back pieces.

Stitch on the sewing machine, backstitching at the raw edge only. Leave long thread tails at the dart point.

Tie the thread tails into a knot and hide them inside the dart bulk using a needle.