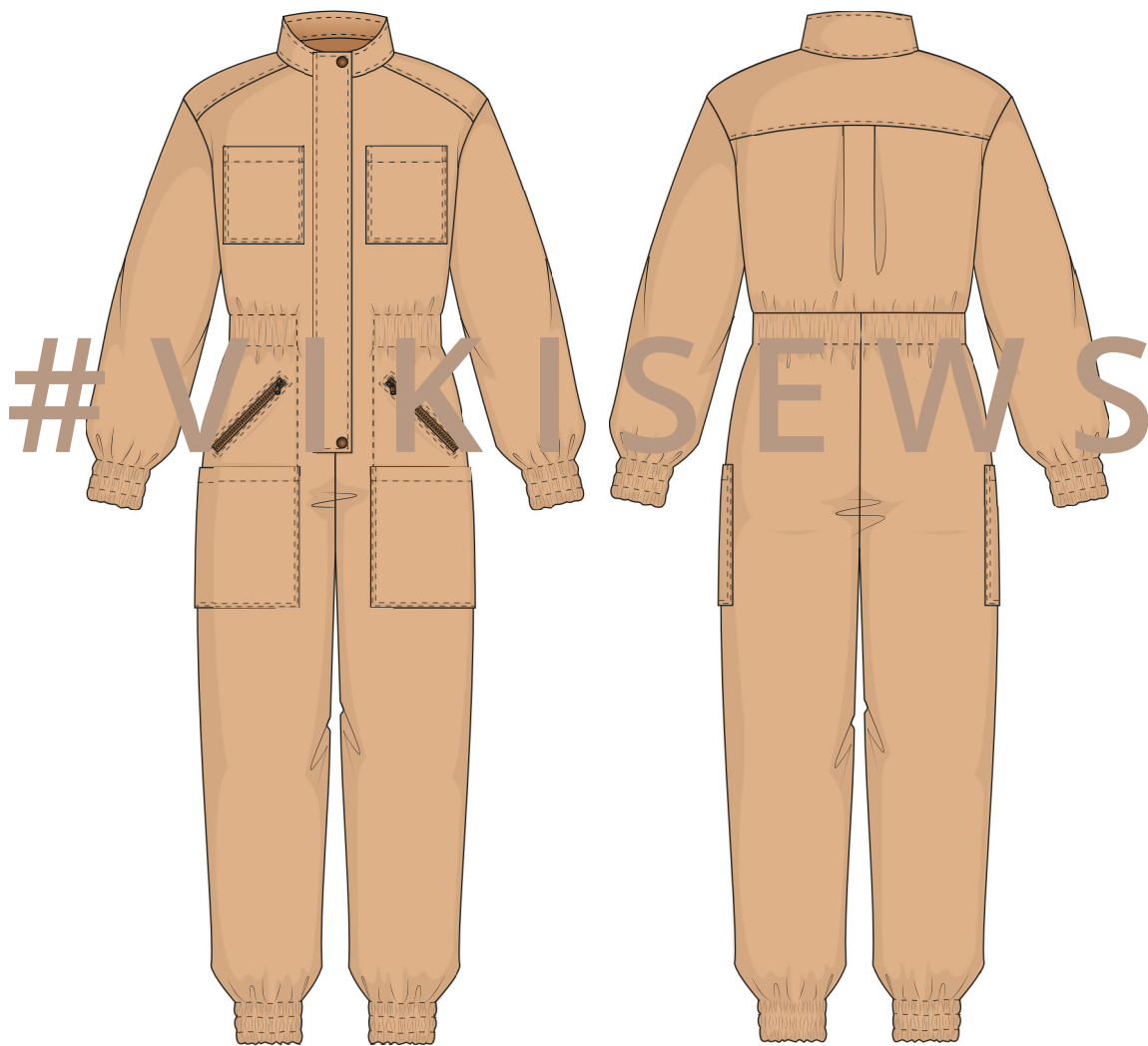


# IRENE

(for girls)

---



3-14 years  
HEIGHT 98–158 cm  
(38.5"–62.25")

---

DIFFICULTY



ADVANCED

# I M P O R T A N T !

The contents of this pattern are copyright protected and belong exclusively to VikiSews. You may use VikiSews patterns for personal use. It is prohibited to share VikiSews patterns and instructions with third parties, as well as to publish patterns and instructions online for public access. According to part 1 of clause 1252 and clause 1301 of the Civil Code of the Russian Federation, failure to comply with the mentioned rules constitutes a breach of the legislation in force in the field of copyright and entails liability of the violator. Illegal use or distribution will be prosecuted in accordance with legislation.

You may use VikiSews patterns for commercial use, to sew custom-made garments and/or create fashion collections, on the condition that the patterns are solely used in a manufacturing setting and are not further shared with individuals.

## I R E N E

#vikisews

### PATTERN DESCRIPTION

*Irene is a semi-fitted jumpsuit with a cinched waist. The front features patch pockets located at the bustline and hipline, as well as welt zipper pockets. The front and back feature yoke details, the back also has a box pleat below the yoke, and a waist seam. This jumpsuit has a wide casing with elastic at the waistline across the back and the front. Irene has a stand collar, and fastens with a center front zipper concealed with a placket. The placket closes with two set-in snap fasteners. Irene has a long set-in sleeve and the bottom of the sleeve and pants has three elastic casings. All the pockets, the placket, and the stand collar have decorative topstitching. Irene is ankle length.*



## TOTAL EASE ALLOWANCE

|        | Chest ease | Waistline ease | Hipline ease | Upper arm ease |
|--------|------------|----------------|--------------|----------------|
| Cm     | 20.3-21.4  | 18.7-27        | 9.7          | 10             |
| Inches | 8-8 3/8    | 7 3/8-10 5/8   | 3 7/8        | 3 7/8          |

## GARMENT LENGTH, SLEEVE LENGTH

| Height, cm | Length at side seam from waist down, cm (diff. for each size) | Sleeve length including shoulder width, cm |
|------------|---|--|
| 98         | 59.7-59.8   | 46.6-47.1                                  |
| 104        | 64.3-64.4   | 49.1-49.6                                  |
| 110        | 68.9-69   | 52.1-52.6                                  |
| 116        | 73.5  | 54.6-55.1                                  |
| 122        | 78.1  | 57.6-58.1                                  |
| 128        | 82.9-83.1   | 60.2-60.6                                  |
| 134        | 87.2-87.4   | 62.7-63.1                                  |
| 140        | 91.5-91.8   | 65.2-65.6                                  |
| 146        | 95.9-96.1   | 67.7-68.1                                  |
| 152        | 100.1-100.3   | 70.7-70.4                                  |
| 158        | 104.4   | 73.5-73.7                                  |

| Height, in | Length at side seam from waist down, in (diff. for each size) | Sleeve length including shoulder width, in |
|------------|---|--|
| 38.5       | 23 1/2  | 18 3/8 - 18 1/2                            |
| 41         | 25 3/8  | 19 3/8 - 19 1/2                            |
| 43.25      | 27 1/8  | 20 1/2 - 20 3/4                            |
| 45.5       | 28 7/8  | 21 1/2 - 21 3/4                            |
| 48         | 30 3/4  | 22 5/8 - 22 7/8                            |
| 50.5       | 32 5/8 - 32 3/4   | 23 3/4 - 23 7/8                            |
| 52.75      | 34 3/8  | 24 5/8 - 24 7/8                            |
| 55         | 36 - 36 1/8   | 25 5/8 - 25 7/8                            |
| 57.5       | 37 3/8 - 39 1/2 41  | 26 5/8 - 26 3/4                            |
| 60         | 1/8   | 27 1/2 - 27 3/4                            |
| 62.25      |   | 28 7/8 - 29                                |

## FINISHED ELASTIC LENGTH AT BOTTOM OF SLEEVE

|        | Size<br>26 | Size<br>28 | Size<br>30 | Size<br>32 | Size<br>34 | Size<br>36 | Size<br>38 | Size<br>40 |
|--------|------------|------------|------------|------------|------------|------------|------------|------------|
| Cm     | 14.8       | 15.2       | 16         | 16.4       | 16.8       | 17.2       | 17.6       | 18.5       |
| Inches | 5 7/8      | 6          | 6 1/4      | 6 1/2      | 6 5/8      | 6 3/4      | 6 7/8      | 7 1/4      |

## FINISHED ELASTIC LENGTH AT BOTTOM OF PANT

|        | Size<br>26 | Size<br>28 | Size<br>30 | Size<br>32 | Size<br>34 | Size<br>36 | Size<br>38 | Size<br>40 |
|--------|------------|------------|------------|------------|------------|------------|------------|------------|
| Cm     | 18.7       | 20.3       | 21.8       | 22.7       | 23.6       | 24.9       | 25.1       | 25.6       |
| Inches | 7 3/8      | 8          | 8 5/8      | 8 7/8      | 9 1/4      | 9 3/4      | 9 7/8      | 10 1/8     |

## SUGGESTED FABRIC

To sew this jumpsuit, choose woven fabrics with the following properties:

- Medium weight, soft, stretchy
- The fiber content can include natural fibers (wool, cotton), blends (wool + polyester, cotton + polyester + elastane, etc.), and synthetic (polyester, polyester + elastane)
- The following fabrics are recommended: corduroy, denim

**Attention!** The fabric must contain elastane.

The jumpsuit in the photo is made in denim. This fabric is medium weight, soft and stretchy. The fiber content is a blend of cotton and elastane.

## FABRIC AND NOTIONS REQUIREMENTS

1. Main fabric, 140cm wide, for a directional print/nap, in meters

| Height, cm | Size 26 | Size 28 | Size 30 | Size 32 | Size 34 | Size 36 | Size 38 | Size 40 |
|------------|---------|---------|---------|---------|---------|---------|---------|---------|
| 98         | 1.35    | 1.35    |         |         |         |         |         |         |
| 104        | 1.45    | 1.45    |         |         |         |         |         |         |
| 110        |         | 1.5     | 1.5     |         |         |         |         |         |
| 116        |         | 1.55    | 1.55    |         |         |         |         |         |
| 122        |         |         | 1.65    | 1.65    |         |         |         |         |
| 128        |         |         | 1.85    | 1.85    | 1.85    |         |         |         |
| 134        |         |         |         | 1.95    | 1.95    | 1.95    |         |         |
| 140        |         |         |         |         | 2       | 2       | 2       |         |
| 146        |         |         |         |         |         | 2.1     | 2.1     | 2.15    |
| 152        |         |         |         |         |         | 2.2     | 2.2     | 2.3     |
| 158        |         |         |         |         |         |         | 2.25    | 2.35    |

Main fabric, 55" wide, for a directional print/nap, in yards

| Height, in | Size<br>26 | Size<br>28 | Size<br>30 | Size<br>32 | Size<br>34 | Size<br>36 | Size<br>38 | Size<br>40 |
|------------|------------|------------|------------|------------|------------|------------|------------|------------|
| 38.5       | 1 1/2      | 1 1/2      |            |            |            |            |            |            |
| 41         | 1 5/8      | 1 5/8      |            |            |            |            |            |            |
| 43.25      |            | 1 5/8      | 1 5/8      |            |            |            |            |            |
| 45.5       |            | 1 3/4      | 1 3/4      |            |            |            |            |            |
| 48         |            |            | 1 3/4      | 1 3/4      |            |            |            |            |
| 50.5       |            |            | 2          | 2          | 2          |            |            |            |
| 52.75      |            |            |            | 2 1/8      | 2 1/8      | 2 1/8      |            |            |
| 55         |            |            |            |            | 2 1/8      | 2 1/8      | 2 1/8      |            |
| 57.5       |            |            |            |            |            | 2 1/4      | 2 1/4      | 2 3/8      |
| 60         |            |            |            |            |            | 2 3/8      | 2 3/8      | 2 1/2      |
| 62.25      |            |            |            |            |            |            | 2 1/2      | 2 5/8      |

2. Lining fabric, 140cm wide, in meters

|        | Height, cm<br>98-104 | Height, cm<br>110-140 | Height, cm<br>146-158 |
|--------|----------------------|-----------------------|-----------------------|
| Meters | 0.2                  | 0.25                  | 0.3                   |

## IMPORTANT!

*When purchasing fabric, please account for shrinkage and buy 5% more than required.*

Lining fabric, 55" wide, in yards

|       | Height, in<br>38.5"-41" | Height, in<br>43.25"-55" | Height, in<br>57.5"-62.25" |
|-------|-------------------------|--------------------------|----------------------------|
| Yards | 1/4                     | 1/4                      | 3/8                        |

3. Woven fusible interfacing, 140cm wide, in meters

|        | Height, cm<br>98-110 | Height, cm<br>116-128 | Height, cm<br>134-146 | Height, cm<br>152-158 |
|--------|----------------------|-----------------------|-----------------------|-----------------------|
| Meters | 0.4                  | 0.45                  | 0.5                   | 0.55                  |

Woven fusible interfacing, 55" wide, in yards

|       | Height, in<br>38.5"-43.25" | Height, in<br>45.5"-50.5" | Height, in<br>52.75"-57.5" | Height, in<br>60"-62.25" |
|-------|----------------------------|---------------------------|----------------------------|--------------------------|
| Yards | 3/8                        | 1/2                       | 1/2                        | 5/8                      |

4. One zipper with metal teeth for the center front, two zippers with metal teeth for the pockets

|                          | Height, cm<br>98-110 | Height, cm<br>116-128 | Height, cm<br>134-146 | Height, cm<br>152-158 |
|--------------------------|----------------------|-----------------------|-----------------------|-----------------------|
| Front zipper length, cm  | 35                   | 40                    | 45                    | 50                    |
| Pocket zipper length, cm | 12                   | 13                    | 14                    | 15                    |

|                          | Height, in<br>38.5"-43.25" | Height, in<br>45.5"-50.5" | Height, in<br>52.75"-57.5" | Height, in<br>60"-62.25" |
|--------------------------|----------------------------|---------------------------|----------------------------|--------------------------|
| Front zipper length, in  | 13 3/4                     | 15 3/4                    | 17 3/4                     | 19 5/8                   |
| Pocket zipper length, in | 4 3/4                      | 5 1/8                     | 5 1/2                      | 5 7/8                    |

5. Two set-in snaps 7mm (1/4") in diameter

6. Fusible tape interfacing, 1cm (3/8") wide (cut along the selvedge and stitched) - up to 1m (1 1/8 yards) depending on size

7. 4cm (1 5/8") wide elastic band

|        | Size<br>26 | Size<br>28 | Size<br>30 | Size<br>32 | Size<br>34 | Size<br>36 | Size<br>38 | Size<br>40 |
|--------|------------|------------|------------|------------|------------|------------|------------|------------|
| Meters | 0.4        | 0.42       | 0.45       | 0.47       | 0.5        | 0.52       | 0.55       | 0.57       |
| Yards  | 3/8        | 1/2        | 1/2        | 1/2        | 1/2        | 5/8        | 5/8        | 5/8        |

8. 1cm (3/8") wide elastic band

|        | Size<br>26 | Size<br>28 | Size<br>30 | Size<br>32 | Size<br>34 | Size<br>36 | Size<br>38 | Size<br>40 |
|--------|------------|------------|------------|------------|------------|------------|------------|------------|
| Meters | 2.4        | 2.45       | 2.5        | 2.6        | 2.8        | 2.8        | 2.9        | 3          |
| Yards  | 2 5/8      | 2 5/8      | 2 3/4      | 2 7/8      | 3          | 3          | 3 1/8      | 3 1/4      |

9. Matching thread - 5 spools (1 spool for the sewing machine and 4 spools for the overlocker)

10. Matching topstitching thread - 1 spool

# TOOLS AND EQUIPMENT

- Sewing machine for construction
- Overlocker for finishing raw edges. This may be replaced with a stretch overlock stitch or a zigzag stitch on the sewing machine (overlock or zigzag stitch width 2-3mm, stitch length 2.5mm)
- Stitch-in-the-ditch foot for your sewing machine (optional)

## PATTERN PIECES LIST

### 1. From main fabric:

- Front - cut 2
- Back leg - cut 2
- Back bodice - cut 1 on fold
- Front yoke - cut 2
- Back yoke - cut 1 on fold
- Sleeve - cut 2
- Collar stand - cut 2
- Placket - cut 1
- Channel - cut 1 on fold
- Top patch pocket - cut 2
- Bottom patch pocket - cut 2
- Right front facing - cut 1
- Left front facing - cut 1

### Additionally interface the following:

- Center front edges for the zipper (with a 2cm [3/4"] wide strip of interfacing cut along the selvedge)
  - Top edges of top and bottom patch pockets (with a 2cm [3/4"] wide strip of interfacing cut along the selvedge)
  - Front pocket openings (with a strip of interfacing cut along the selvedge, take length from pattern piece)
- Also interface the top and bottom placket edges, and top and side edges on one collar stand piece, with tape interfacing strips (cut along the selvedge and stitched)

## IMPORTANT!

*Don't forget to transfer all pattern markings and notches onto the fabric.*

### 2. From lining:

- Pocket lining - cut 2

### 3. From interfacing:

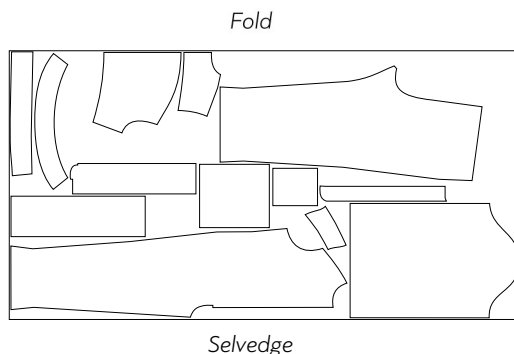
- Collar stand - cut 2
- Placket - cut 1
- Right front facing - cut 1
- Left front facing - cut 1

## SEAM ALLOWANCES

All pattern pieces include 1cm (3/8") seam allowances; patch pockets top edges have a 2cm (3/4") seam allowance. Take this into account when laying out pattern pieces on the fabric.

## CUTTING LAYOUT

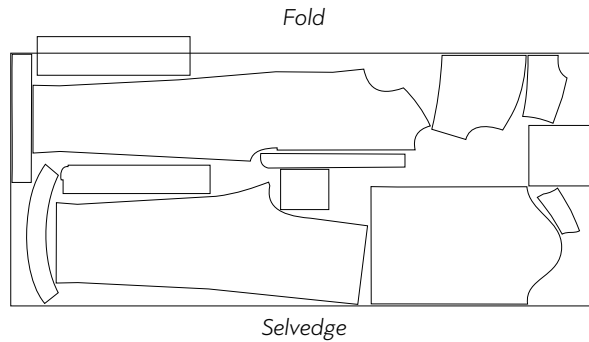
**Main fabric, 140cm (55") wide, with one fold, for sizes in 98cm (38.5") height, with nap and a directional print**



**Attention!** Cut the right front facing and left front facing pieces once, with the right side of the fabric facing up. Cut one placket piece only.

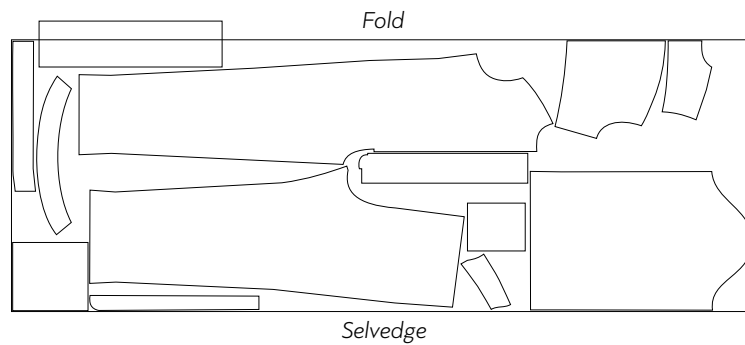


**Main fabric, 140cm (55") wide, with one fold, for sizes in 104-122cm (41"-48") height, with nap and a directional print**



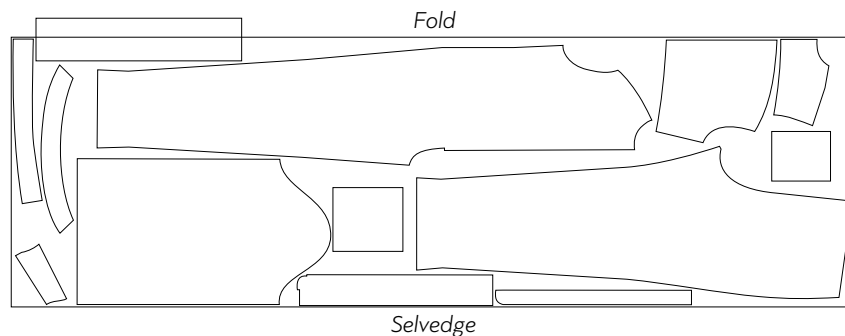
**Attention!** Cut the right front facing and left front facing pieces once, with the right side of the fabric facing up. Cut one placket piece only.

**Main fabric, 140cm (55") wide, with one fold, for sizes in 128-134cm (50.5"-52.75") height, with nap and a directional print**



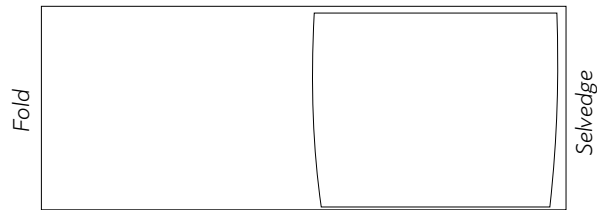
**Attention!** Cut the right front facing and left front facing pieces once, with the right side of the fabric facing up. Cut one placket piece only.

**Main fabric, 140cm (55") wide, with one fold, for sizes in 140-158cm (55"-62.25") height, with nap and a directional print**

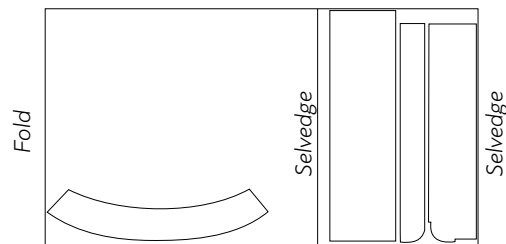


**Attention!** Cut the right front facing and left front facing pieces once, with the right side of the fabric facing up. Cut one placket piece only.

Lining fabric, 140cm (55") wide, with one fold,  
for all sizes and heights



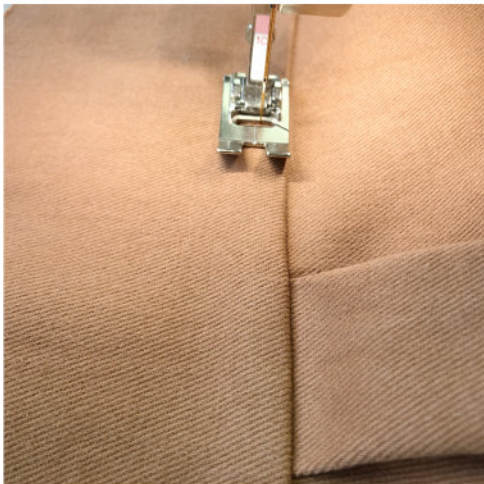
Interfacing, 140cm (55") wide, with one partial  
fold, for all sizes and heights



**READY?**  
**LET'S GET SEWING!**



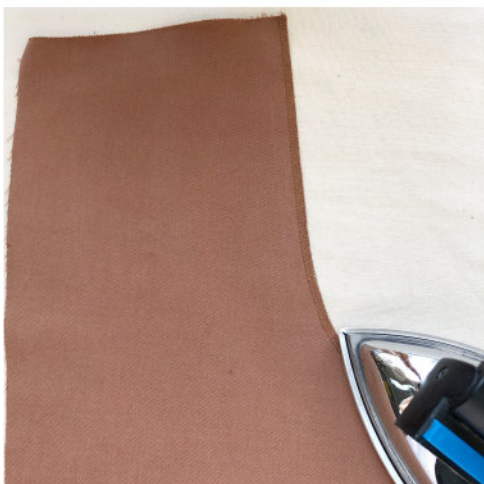
Press the seam allowances towards the back yoke.



Topstitch the seam allowances to the back yoke using topstitching thread at 7mm (1/4") from the seam, with a stitch length of 4mm (1/8").



Press.



Overlock the crotch edges on the back leg pieces with the right side facing up. Press.