

# FROM THE FOUNDER OF THE #VIKISEWS BRAND

---



Back in 2016, when I was working on my first set of sewing instructions, I was trying to write them in such a way that even a complete beginner could easily understand and use them to create their very first garment. These instructions laid the foundation for the Vikisews brand, its vision and its mission. I wanted to create modern patterns with the utmost detailed and clear instructions.

Now, with each new collection we are constantly improving our instructions, amending them and adding more relevant details. By the time the final product reaches you, our drafters, correctors, and editors would have spent weeks perfecting every word and every photograph. If you compile a few of our instructions together, you will get a sewing manual that will assist you in sewing all kinds of garments at any difficulty level.

And I would be very happy if these instructions helped you to turn your hobby into a lifelong passion... Enjoy the process! Create your ultimate dream wardrobe! Wear your garments proudly for years to come!

If you have any questions, please contact us at [info@vikisews.com](mailto:info@vikisews.com) — we are always there to help.



## PELIN PATTERN DESCRIPTION

---

Pelin is a close-fitting blouse. The front features applied yokes and gathering along the yoke seam edge. The back is fitted with a center seam. The blouse has a deep, V-shaped neckline and fastens with buttons and rouleau button loops at the center front. The long set-in sleeves are tapered towards the bottom and pleated at the sleeve cap. The blouse flares out below the waist thanks to a two-layer peplum attached along the waistline. Pelin is above-hip length.



## IMPORTANT!

---

The contents of this pattern are copyright protected and belong exclusively to Vikisews. You may use Vikisews patterns for personal use. It is prohibited to share Vikisews patterns and instructions with third parties, as well as to publish patterns and instructions online for public access. **Non-compliance with the mentioned rules is a violation of the US copyright law and may result in civil liability and criminal prosecution.**

You may use Vikisews patterns for commercial use, to sew custom-made garments and/or create fashion collections, on the condition that the patterns are solely used in a manufacturing setting and are not further shared with individuals.

## TOTAL EASE ALLOWANCE

	Bust ease	Waistline ease	Hipline ease	Upper arm ease
cm	4.5–3.5	6.4–5.3	22.3–30.5	7.5–6.6
inches	1 3/4–1 3/8	2 1/2–2 1/8	8 3/4–12	3–2 5/8

## GARMENT LENGTH, SLEEVE LENGTH

Height, cm	Back length from waist down, cm	Sleeve length, cm
1 (154–160)	17.6–21	57–62.2
2 (162–168)	17.6–21	58.7–63.6
3 (170–176)	17.6–21	60.1–65
4 (178–184)	17.6–21	61.7–66.5

Height, ft	Back length from waist down, in	Sleeve length, in
1 (5'1"–5'3")	6 7/8–8 1/4	22 1/2–24 1/2
2 (5'4"–5'6")	6 7/8–8 1/4	23 1/8–25
3 (5'7"–5'9")	6 7/8–8 1/4	23 5/8–25 5/8
4 (5'10"–6'1")	6 7/8–8 1/4	24 1/4–26 1/8

## SUGGESTED FABRIC

To sew this blouse, choose dress-weight fabrics with the following properties:

- medium weight, soft, non-stretch or low-stretch, opaque
- the fiber content can include natural fibers (silk), artificial fibers (viscose), blends (silk + polyester, silk + viscose, etc.), and synthetics (polyester, polyester + elastane)
- the following fabrics are recommended: crepe, dress-weight viscose, crepe de chine, natural or artificial silk.

**Attention!** We do not recommend stretchy knit fabrics.

The blouse in the photos is made of natural silk. The fabric is medium weight, soft, and without stretch. The fiber content is 100% silk. The fabric weight is 130 g/m<sup>2</sup>.

# FABRIC AND NOTIONS REQUIREMENTS

1. Main fabric, 140 cm wide, 100–130 g/m<sup>2</sup>, with a directional print/nap, in meters:

Height, cm	Size								
	34	36	38	40	42	44	46	48	50–52
1 (154–160)	1.25	1.3	1.3	1.35	1.35	1.55	1.6	1.6	1.65
2 (162–168)	1.3	1.3	1.35	1.35	1.35	1.6	1.6	1.65	1.65
3 (170–176)	1.3	1.35	1.35	1.35	1.4	1.6	1.65	1.65	1.7
4 (178–184)	1.35	1.35	1.4	1.4	1.4	1.65	1.65	1.7	1.7

Main fabric, 55" wide, 100–130 g/m<sup>2</sup>, with a directional print/nap, in yards:

Height, ft	Size						
	34	36	38	40–42	44–46	48	50–52
1 (5'1"–5'3")	1 3/8	1 3/8	1 3/8	1 1/2	1 3/4	1 3/4	1 3/4
2 (5'4"–5'6")	1 3/8	1 3/8	1 1/2	1 1/2	1 3/4	1 3/4	1 3/4
3 (5'7"–5'9")	1 3/8	1 1/2	1 1/2	1 1/2	1 3/4	1 3/4	1 7/8
4 (5'10"–6'1")	1 1/2	1 1/2	1 1/2	1 1/2	1 3/4	1 7/8	1 7/8

2. Lightweight knit or woven interfacing, 140 cm wide, 40 g/m<sup>2</sup>, in meters:

Height, cm	Size				
	34–38	40	42–44	46–50	52
1 (154–160)	0.5	0.5	0.5	0.5	0.55
2 (162–168)	0.5	0.5	0.5	0.55	0.55
3 (170–176)	0.5	0.5	0.55	0.55	0.55
4 (178–184)	0.5	0.55	0.55	0.55	0.55

Lightweight knit or woven interfacing, 55" wide, 40 g/m<sup>2</sup>, in yards:

Height, ft	Size				
	34–38	40	42–44	46–50	52
1 (5'1"–5'3")	1/2	1/2	1/2	1/2	5/8
2 (5'4"–5'6")	1/2	1/2	1/2	5/8	5/8
3 (5'7"–5'9")	1/2	1/2	5/8	5/8	5/8
4 (5'10"–6'1")	1/2	5/8	5/8	5/8	5/8

**IMPORTANT!** When purchasing fabric, please account for shrinkage and buy 5% more than required.

3. Stitched bias-cut fusible stay tape with stitch reinforcement, 1.5 cm (5/8") wide — 1.73–2.2 m (1 7/8–2 3/8 yd)
4. One pair of raglan shoulder pads, 1 cm (3/8") tall
5. Four buttons, 1–1.2 cm (3/8–1/2") in diameter
6. Matching thread — 5 spools (1 spool for the sewing machine + 4 spools for the overlocker)

## TOOLS AND EQUIPMENT

- sewing machine for construction
- overlocker for finishing raw edges. This may be replaced with a stretch overlock stitch or a zigzag stitch on the sewing machine (overlock or zigzag stitch width 2–3 mm, stitch length 2.5 mm)
- stitch-in-the-ditch foot for the sewing machine (optional)
- loop turner

## PATTERN PIECES LIST

### 1. From main fabric:

- front — cut 2
- front peplum — cut 4
- yoke — cut 2
- back — cut 2
- back peplum — cut 2 on fold
- sleeve — cut 2
- placket — cut 1
- back neck facing — cut 1
- front facing — cut 2
- rouleau loops — cut 1

**IMPORTANT!** Don't forget to transfer all pattern markings and notches onto the fabric.

### 2. From interfacing:

- front facing — cut 2
- back neck facing — cut 1
- placket — cut 1

# SEAM ALLOWANCES

---

All pattern pieces include seam allowances as follows:

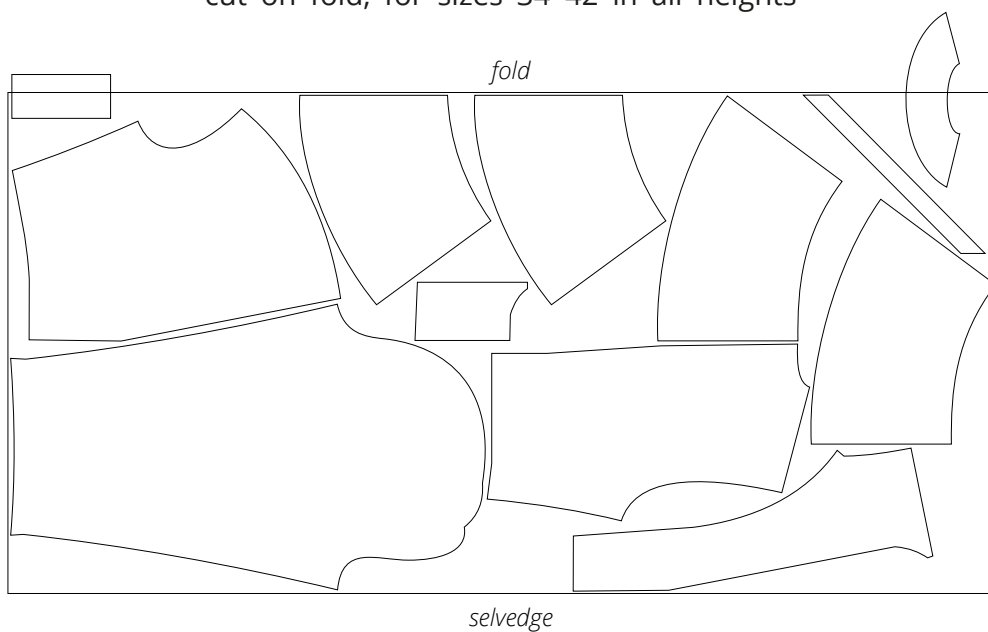
- sleeve hem allowance — 2 cm (3/4")
- all other edges — 1 cm (3/8")

Take this into account when laying out the pattern pieces on the fabric.

# CUTTING LAYOUT

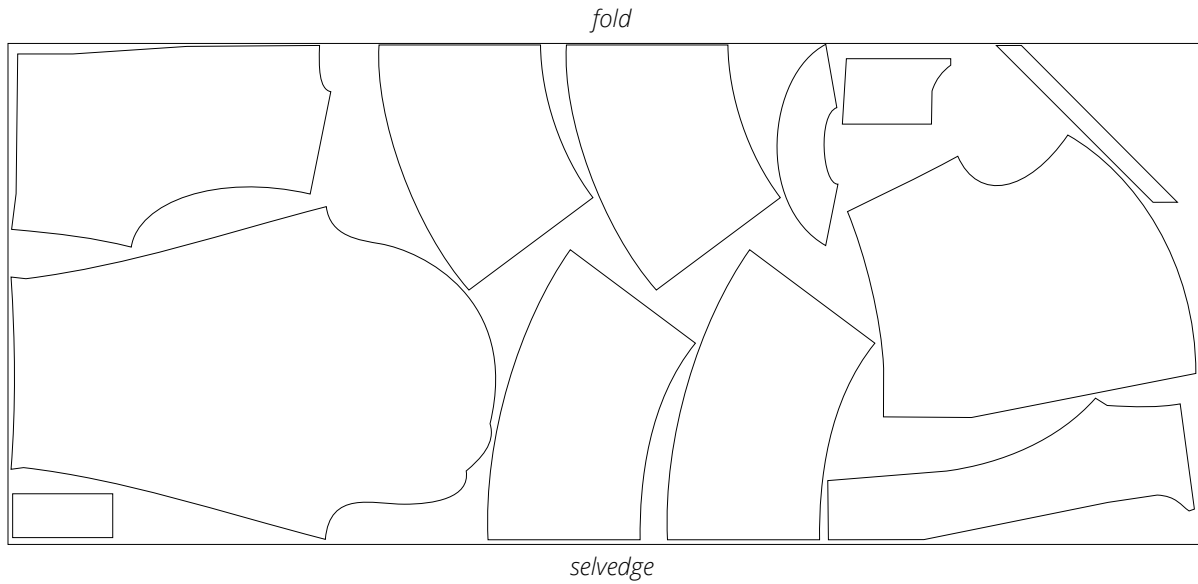
---

Main fabric, 140 cm (55") wide, with a directional print/nap,  
cut on fold, for sizes 34-42 in all heights



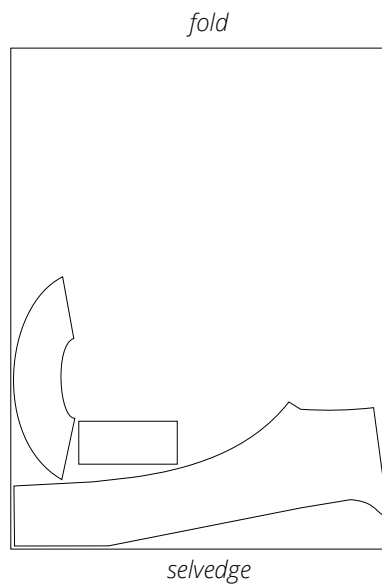
**Important!** Cut one each of the back neck facing and placket pieces on a single layer out of the leftover fabric. Cut only one rouleau loops piece.

Main fabric, 140 cm (55") wide, with a directional print/nap,  
cut on fold, for sizes 44–52 in all heights



**Important!** Cut one each of the back neck facing,  
rouleau loops, and placket pieces.

Interfacing, 140 cm (55") wide, cut on fold,  
for all sizes in all heights



**Important!** Cut one each of the back neck  
facing and placket pieces.

**READY? LET'S GET SEWING!**

---





Place the back pieces right sides together. Align the center edges, match the notches, and pin. Stitch on the sewing machine, backstitching at the beginning and end of the seam.



Finish the seam allowances on the overlocker. Press the center back seam allowances towards the left back piece.



Place the front and back pieces right sides together. Align the shoulder and side edges, match the notches, and pin.

Stitch on the sewing machine, backstitching at the beginning and end of each seam.