

# FROM THE FOUNDER OF THE #VIKISEWS BRAND

---



Back in 2016, when I was working on my first set of sewing instructions, I was trying to write them in such a way that even a complete beginner could easily understand and use them to create their very first garment. These instructions laid the foundation for the Vikisews brand, its vision and its mission. I wanted to create modern patterns with the utmost detailed and clear instructions.

Now, with each new collection we are constantly improving our instructions, amending them and adding more relevant details. By the time the final product reaches you, our drafters, correctors, and editors would have spent weeks perfecting every word and every photograph. If you compile a few of our instructions together, you will get a sewing manual that will assist you in sewing all kinds of garments at any difficulty level.

And I would be very happy if these instructions helped you to turn your hobby into a lifelong passion... Enjoy the process! Create your ultimate dream wardrobe! Wear your garments proudly for years to come!

If you have any questions, please contact us at [info@vikisews.com](mailto:info@vikisews.com) — we are always there to help.



## IRMELIN PATTERN DESCRIPTION

---

Irmelin is a semi-fitted blazer-style dress fully finished with a lining. There are side panels at the front and back. The back of the dress is fitted with waist darts and a center seam. The shaping at the front is achieved with vertical bust darts that go down to welt pockets with flaps. The shoulder line is extended. The long, set-in, two-piece sleeves feature a vent with sewn-on buttons in the elbow seam. The dress closes with buttons and buttonholes at the center front. Irmelin is below-hip length.



## IMPORTANT!

---

The contents of this pattern are copyright protected and belong exclusively to Vikisews. You may use Vikisews patterns for personal use. It is prohibited to share Vikisews patterns and instructions with third parties, as well as to publish patterns and instructions online for public access. **Non-compliance with the mentioned rules is a violation of the US copyright law and may result in civil liability and criminal prosecution.**

You may use Vikisews patterns for commercial use, to sew custom-made garments and/or create fashion collections, on the condition that the patterns are solely used in a manufacturing setting and are not further shared with individuals.

## TOTAL EASE ALLOWANCE

	Bust ease	Waistline ease	Hipline ease	Upper arm ease
cm	10.3–12.4	5.7–9	13	8.8–9.5
inches	4–4 7/8	2 1/4–3 1/2	5 1/8	3 1/2–3 3/4

## GARMENT LENGTH, SLEEVE LENGTH

Height, cm	Back length, cm	Sleeve length, cm
1 (154–160)	70.5–72.2	63
2 (162–168)	73.4–75.2	65
3 (170–176)	76.4–78.2	67
4 (178–184)	79.4–81.2	69

Height, ft	Back length, in	Sleeve length, in
1 (5'1"–5'3")	27 3/4–28 3/8	24 3/4
2 (5'4"–5'6")	28 7/8–29 5/8	25 5/8
3 (5'7"–5'9")	30 1/8–30 3/4	26 3/8
4 (5'10"–6'1")	31 1/4–32	27 1/8

## SUGGESTED FABRIC

To sew this dress, choose medium-weight, structured, non-stretch or low-stretch, dress-weight or suiting fabrics made of natural, artificial, synthetic fibers, or blends.

The following fabrics are recommended: wool suiting, velvet suiting, jacquard, denim.

**Attention!** We do not recommend stretchy, soft, lightweight (dress-weight wool), and loosely woven heavyweight suiting fabrics.

For the lining, we recommend lining fabrics made of artificial fibers, synthetic fibers, or blends.

The dress in the photo is made of jacquard. The fabric is medium weight, structured, and low-stretch. The fiber content is a blend of 75% wool, 15% lurex, and 10% polyester. The fabric weight is 250 g/m<sup>2</sup>.

The fiber content of the lining is 100% viscose. The fabric weight is 130 g/m<sup>2</sup>.

# FABRIC AND NOTIONS REQUIREMENTS

1. Main fabric, 110 cm wide, with a directional print/nap, in meters:

Height, cm	Size				
	34-38	40-42	44-46	48-50	52
1 (154-160)	2.1	2.1	2.2	2.25	2.35
2 (162-168)	2.15	2.15	2.3	2.35	2.45
3 (170-176)	2.25	2.25	2.35	2.4	2.45
4 (178-184)	2.3	2.35	2.45	2.5	2.5

Main fabric, 43" wide, with a directional print/nap, in yards:

Height, ft	Size				
	34-38	40-42	44-46	48-50	52
1 (5'1"-5'3")	2 1/4	2 1/4	2 3/8	2 1/2	2 5/8
2 (5'4"-5'6")	2 3/8	2 3/8	2 1/2	2 5/8	2 5/8
3 (5'7"-5'9")	2 1/2	2 1/2	2 5/8	2 5/8	2 5/8
4 (5'10"-6'1")	2 1/2	2 5/8	2 5/8	2 3/4	2 3/4

1.1 Main fabric, 140 cm wide, with a directional print/nap, in meters:

Height, cm	Size								
	34	36	38	40	42	44	46	48-50	52
1 (154-160)	1.6	1.6	1.6	1.75	1.8	1.85	1.85	2.05	2.05
2 (162-168)	1.65	1.65	1.7	1.8	1.9	1.9	1.95	2.1	2.15
3 (170-176)	1.7	1.7	1.75	1.85	1.95	2	2	2.2	2.2
4 (178-184)	1.75	1.8	1.8	1.9	2	2.05	2.05	2.25	2.3

Main fabric, 55" wide, with a directional print/nap, in yards:

Height, ft	Size							
	34	36	38	40	42	44-46	48-50	52
1 (5'1"-5'3")	1 3/4	1 3/4	1 3/4	1 7/8	2	2	2 1/4	2 1/4
2 (5'4"-5'6")	1 3/4	1 3/4	1 7/8	2	2 1/8	2 1/8	2 1/4	2 3/8
3 (5'7"-5'9")	1 7/8	1 7/8	1 7/8	2	2 1/8	2 1/8	2 3/8	2 3/8
4 (5'10"-6'1")	1 7/8	2	2	2 1/8	2 1/8	2 1/4	2 1/2	2 1/2

2. Lining fabric, 140 cm wide, with a directional print, in meters:

Height, cm	Size			
	34-36	38-40	42-50	52
1 (154-160)	1.35	1.4	1.45	1.5
2 (162-168)	1.4	1.45	1.5	1.65
3 (170-176)	1.45	1.5	1.55	1.7
4 (178-184)	1.5	1.55	1.6	1.75

Lining fabric, 55" wide, with a directional print, in yards:

Height, ft	Size			
	34-36	38-40	42-50	52
1 (5'1"-5'3")	1 1/2	1 1/2	1 5/8	1 5/8
2 (5'4"-5'6")	1 1/2	1 5/8	1 5/8	1 3/4
3 (5'7"-5'9")	1 5/8	1 5/8	1 3/4	1 7/8
4 (5'10"-6'1")	1 5/8	1 3/4	1 3/4	1 7/8

**IMPORTANT!** When purchasing fabric, please account for shrinkage and buy 5% more than required.

3. Lightweight interfacing, knit or woven, 140 cm wide, in meters:

Height, cm	Size			
	34-36	38-44	46-50	52
1 (154-160)	1.4	1.55	1.75	1.8
2 (162-168)	1.45	1.6	1.85	1.85
3 (170-176)	1.5	1.65	1.9	1.9
4 (178-184)	1.55	1.7	1.9	1.95

Lightweight interfacing, knit or woven, 55" wide, in yards:

Height, ft	Size			
	34-36	38-44	46-50	52
1 (5'1"-5'3")	1 1/2	1 3/4	1 7/8	2
2 (5'4"-5'6")	1 5/8	1 3/4	2	2
3 (5'7"-5'9")	1 5/8	1 3/4	2 1/8	2 1/8
4 (5'10"-6'1")	1 3/4	1 7/8	2 1/8	2 1/8

4. Stitched bias-cut fusible stay tape with stitch reinforcement, 1.5 cm (5/8") wide — 3.8 m (4 1/8 yd)
5. Four buttons, 2.2–2.5 cm (7/8–1") in diameter
6. Eight buttons, 1.5 cm (5/8") in diameter
7. One pair of shoulder pads, 2 cm (3/4") tall
8. One pair of sleeve heads
9. Matching thread for the main fabric — 2 spools
10. Matching thread for the lining fabric — 1 spool

## TOOLS AND EQUIPMENT

---

- sewing machine for construction
- buttonhole foot for the sewing machine

## PATTERN PIECES LIST

---

### 1. From main fabric:

- front — cut 2
- side front — cut 2
- back — cut 2
- side back — cut 2
- top sleeve — cut 2
- bottom sleeve — cut 2
- top flap — cut 2
- welt — cut 2
- pocket facing — cut 2
- front facing — cut 2
- back neck facing — cut 1 on fold

### 2. From lining fabric:

- front lining — cut 2
- back lining — cut 2
- top sleeve lining — cut 2
- bottom sleeve lining — cut 2
- bottom flap — cut 2
- pocket top lining — cut 2
- pocket bottom lining — cut 2

### 3. From interfacing:

- front — cut 2
- side front — cut 2
- back — cut 2
- side back — cut 2
- top flap — cut 2
- welt — cut 2
- pocket facing — cut 2
- front facing — cut 2
- back neck facing — cut 1 on fold

**IMPORTANT!** Don't forget to transfer all pattern markings and notches onto the fabric.

### Partially interface the following:

- top sleeve — 2 pieces (interface the sleeve cap and the bottom part of the sleeve outlined on the pattern)
- bottom sleeve — 2 pieces (interface the sleeve cap and the bottom part of the sleeve outlined on the pattern)



Additionally, interface the following sections outlined on the pattern:

- front (2nd interfacing layer) — 2 pieces + 2 side sections
- side front (2nd interfacing layer) — 2 pieces
- back (2nd interfacing layer) — 2 pieces
- side back (2nd interfacing layer) — 2 pieces

Also, cut two interfacing strips to reinforce the pocket opening seam allowances. The strips should be cut on the straight grain (parallel to the selvedge).

#### 4. Templates:

- pocket opening template

## SEAM ALLOWANCES

---

All pattern pieces include seam allowances as follows:

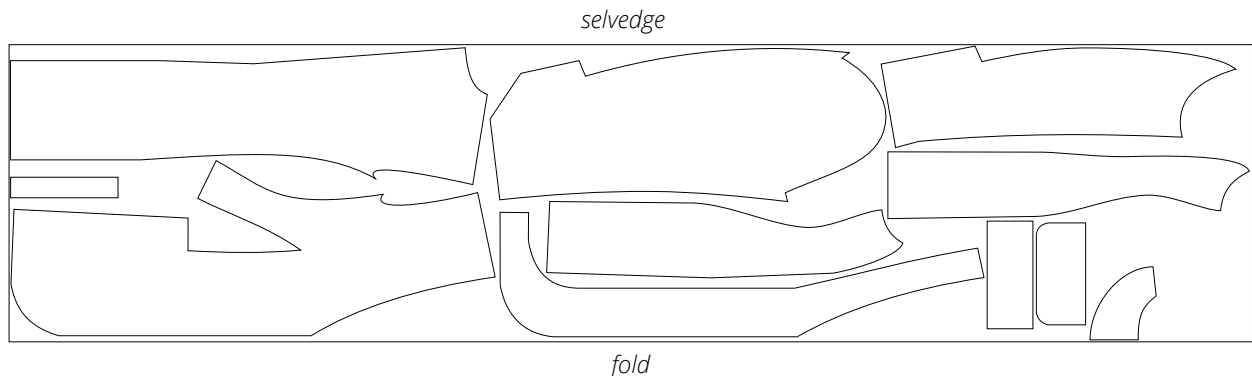
- garment hem allowance — 4 cm (1 5/8")
- sleeve hem allowance — 4 cm (1 5/8")
- pocket lining curved edges — 1.5 cm (5/8")
- all other edges — 1 cm (3/8").

Take this into account when laying out pattern pieces on the fabric.

## CUTTING LAYOUT

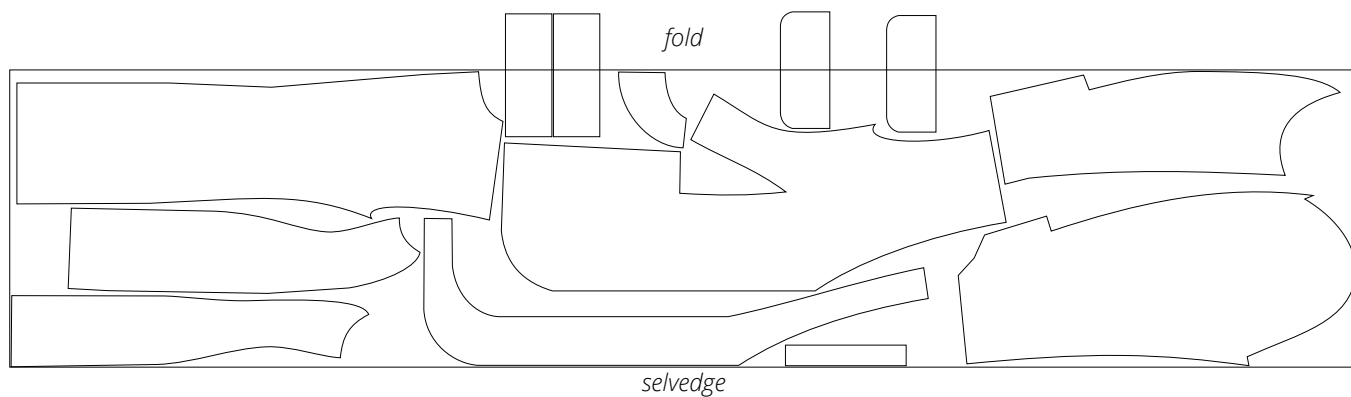
---

Main fabric, 110 cm (43") wide, with a directional print/nap,  
cut on fold, for sizes 34–42 in all heights



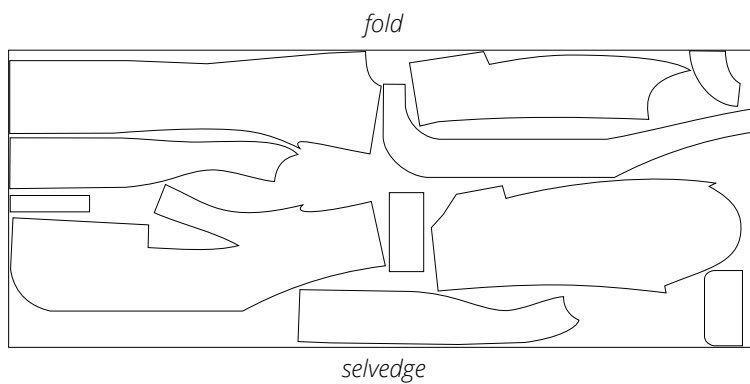


Main fabric, 110 cm (43") wide, with a directional print/nap,  
cut on fold, for sizes 44-52 in all heights

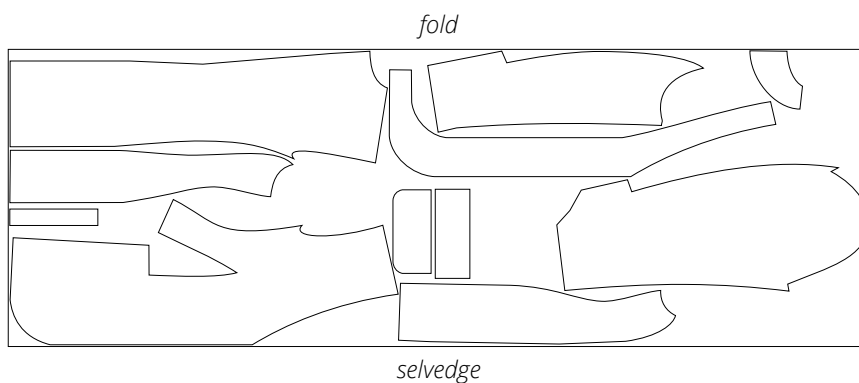


**Important!** Cut the pocket facing and top flap pieces on a single layer out of leftover fabric.

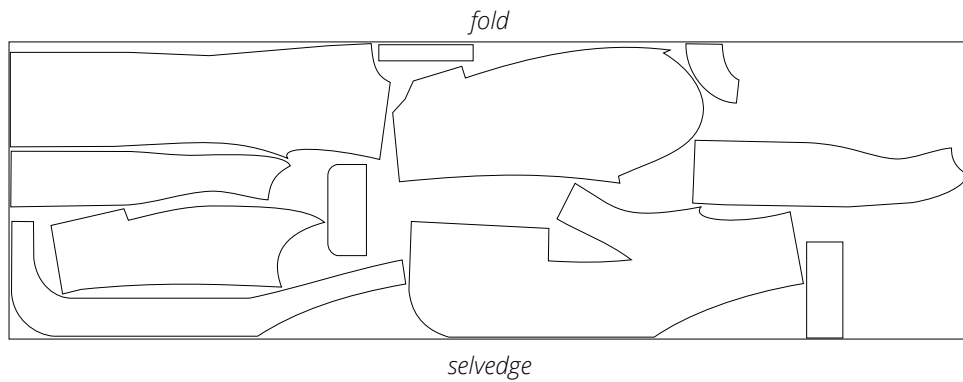
Main fabric, 140 cm (55") wide, with a directional print/nap,  
cut on fold, for sizes 34-38 in all heights



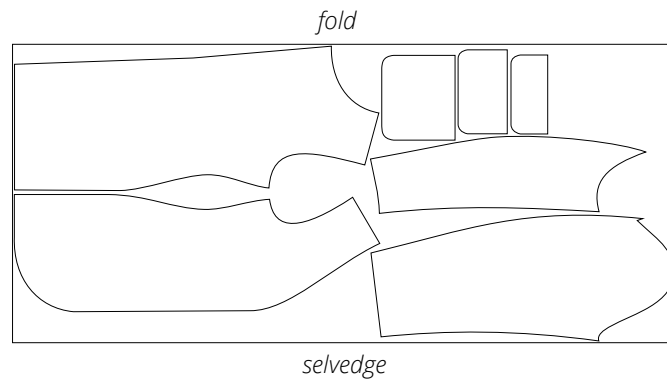
Main fabric, 140 cm (55") wide, with a directional print/nap,  
cut on fold, for sizes 40-46 in all heights



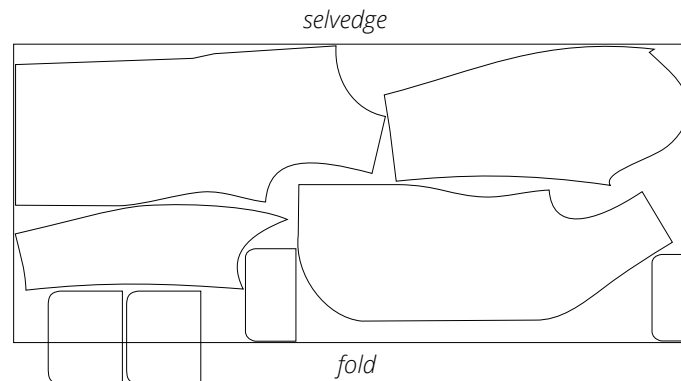
Main fabric, 140 cm (55") wide, with a directional print/nap, cut on fold, for sizes 48-52 in all heights



Lining fabric, 140 cm (55") wide, with a directional print, cut on fold, for sizes 34-42 in all heights

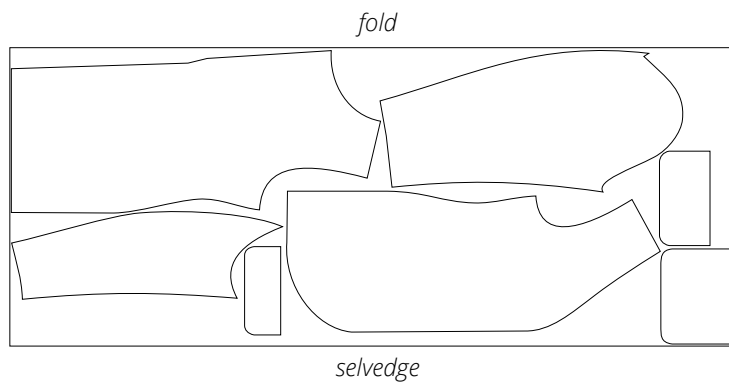


Lining fabric, 140 cm (55") wide, with a directional print, cut on fold, for sizes 44-50 in all heights

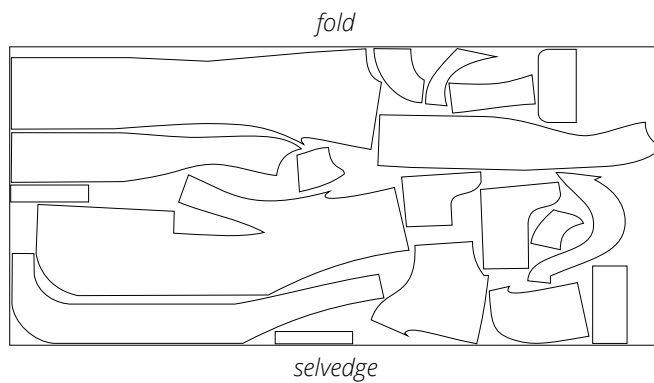


**Important!** Cut the pocket bottom lining pieces on a single layer out of leftover fabric.

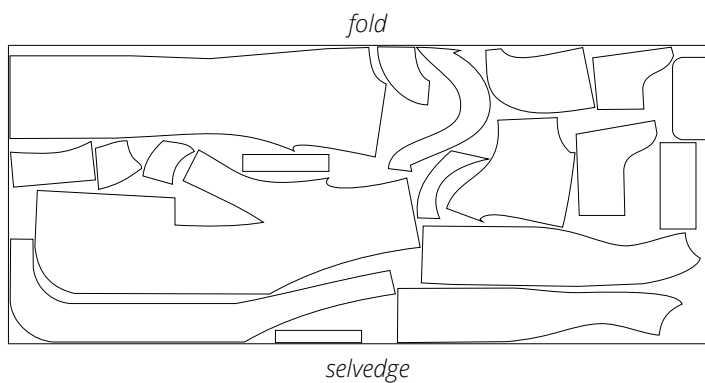
Lining fabric, 140 cm (55") wide, with a directional print,  
cut on fold, for size 52 in all heights



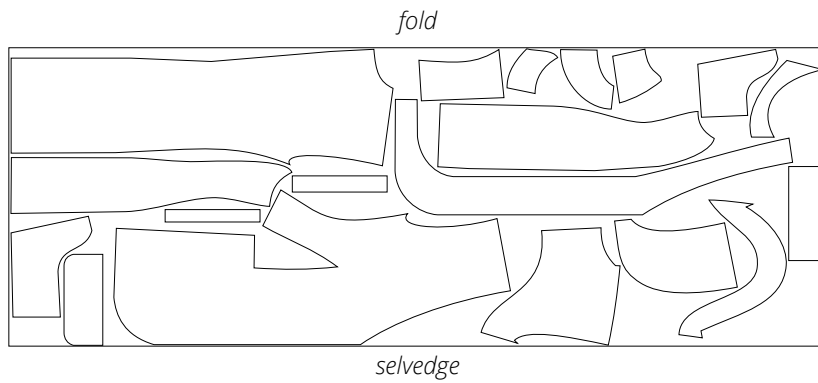
Interfacing, 140 cm (55") wide, cut on fold,  
for sizes 34–36 in all heights



Interfacing, 140 cm (55") wide, cut on fold,  
for sizes 38–44 in all heights



Interfacing, 140 cm (55") wide, cut on fold,  
for sizes 46–52 in all heights



**READY? LET'S GET SEWING!**

---



Press the dart seam allowances open.



Press and steam the darts.

Shrink out the fullness at the dart point on a tailor's ham. Press the seam allowance at the dart point towards the center front edge.



Working on the wrong side of the front, match the sides of the pocket opening end-to-end. Apply a strip of straight-grain fusible stay tape to prevent the edges from shifting.