

# FROM THE FOUNDER OF THE #VIKISEWS BRAND

---

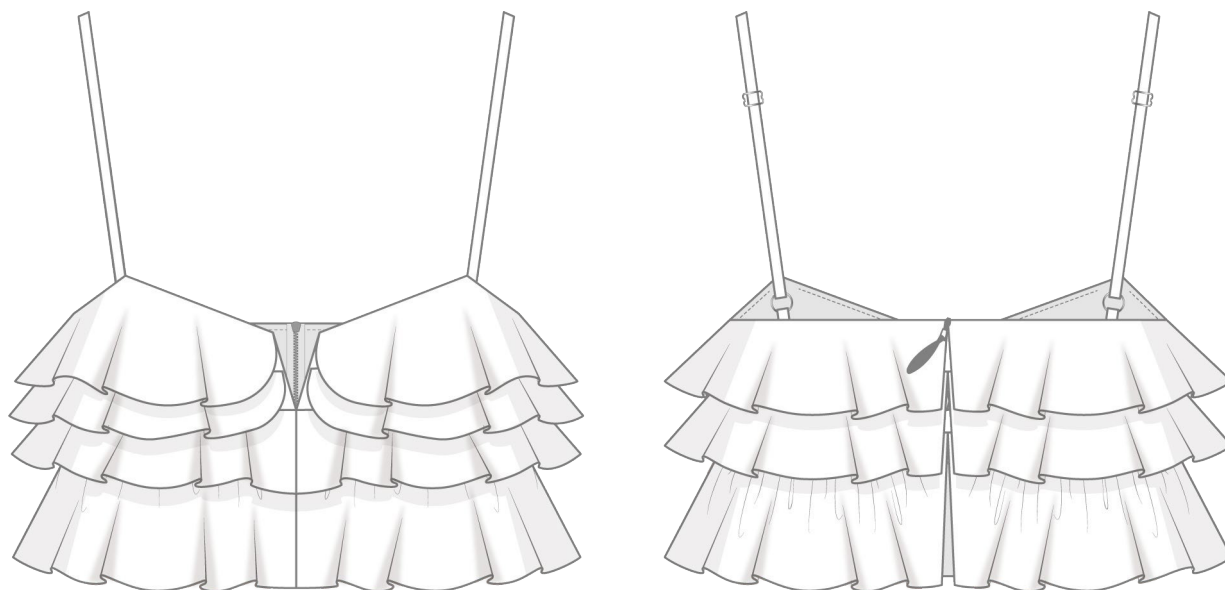


Back in 2016, when I was working on my first set of sewing instructions, I was trying to write them in such a way that even a complete beginner could easily understand and use them to create their very first garment. These instructions laid the foundation for the Vikisews brand, its vision and its mission. I wanted to create modern patterns with the utmost detailed and clear instructions.

Now, with each new collection we are constantly improving our instructions, amending them and adding more relevant details. By the time the final product reaches you, our drafters, correctors, and editors would have spent weeks perfecting every word and every photograph. If you compile a few of our instructions together, you will get a sewing manual that will assist you in sewing all kinds of garments at any difficulty level.

And I would be very happy if these instructions helped you to turn your hobby into a lifelong passion... Enjoy the process! Create your ultimate dream wardrobe! Wear your garments proudly for years to come!

If you have any questions, please contact us at [info@vikisews.com](mailto:info@vikisews.com) — we are always there to help.



## FRINA PATTERN DESCRIPTION

---

Frina is a semi-fitted top with flounces at the front and back. The V-shaped neckline features a bra separator. The top is fully lined, has a hook-and-eye closure, and features adjustable straps. Frina is above-waist length.



## IMPORTANT!

---

The contents of this pattern are copyright protected and belong exclusively to Vikisews. You may use Vikisews patterns for personal use. It is prohibited to share Vikisews patterns and instructions with third parties, as well as to publish patterns and instructions online for public access. **Non-compliance with the mentioned rules is a violation of the US copyright law and may result in civil liability and criminal prosecution.**

You may use Vikisews patterns for commercial use, to sew custom-made garments and/or create fashion collections, on the condition that the patterns are solely used in a manufacturing setting and are not further shared with individuals.

# TOTAL EASE ALLOWANCE

	Bust ease (estimated)
cm	-1 to -1.3
inches	-3/8 to -1/2

# SUGGESTED FABRIC

To sew this top, choose dress-weight fabrics with the following properties: medium weight or lightweight, pliable, soft, non-stretch or low-stretch. The fiber content can include natural fibers, artificial fibers, blends, or synthetics.

The following fabrics are recommended: dress-weight viscose, modal, cotton, challis, natural silk, artificial silk.

**Attention!** We do not recommend stretchy knit fabrics.

The top in the photo is made of modal. The fabric is medium weight, pliable, soft, and low-stretch. The fiber content is 83% modal and 17% polyester. The fabric weight is 90 g/m².

# FABRIC AND NOTIONS REQUIREMENTS

1. Main fabric, 140 cm wide, with a directional print/nap, for all heights, in meters:

Size	34–38	40	42–44	46	48	50	52
Meters	1	1.1	1.3	1.4	1.45	1.6	1.65
Yards	1 1/8	1 1/4	1 3/8	1 1/2	1 5/8	1 3/4	1 3/4

**IMPORTANT!** When purchasing fabric, please account for shrinkage and buy 5% more than required.

- 2. Stitched bias-cut fusible stay tape with stitch reinforcement, 1 cm (3/8") wide — 1.3 m (1 3/8 yd)
- 3. Stitched straight-grain fusible stay tape, 1 cm (3/8") wide — 35 cm (13 3/4")
- 4. One separating invisible zipper, 15 cm (5 7/8") long, for all sizes in all heights
- 5. One bra separator, 6.5 cm (2 1/2") long
- 6. One set of accessories for straps: 2 sliders and 2 rings
- 7. Matching thread — 4 spools (1 spool for the sewing machine + 3 spools for the overlocker)

# TOOLS AND EQUIPMENT

---

- sewing machine for construction
- overlocker for finishing the ruffles with a rolled hem
- one-sided foot for the sewing machine to attach the zipper
- loop turner

# PATTERN PIECES LIST

---

## 1. From main fabric:

- top front— cut 2
- center front — cut 2
- bottom center front — cut 2
- side front — cut 2
- bottom side front — cut 2
- top back — cut 2
- bottom back — cut 2
- strap + ring tab — cut 2
- front ruffle — cut 2
- top ruffle — cut 2
- mid ruffle — cut 2
- bottom ruffle — cut 2

## 2. From lining fabric:

- center front lining — cut 2
- side front lining — cut 2
- back lining — cut 2

The lining pieces can be cut out of the main or lining fabric.

**IMPORTANT!** Don't forget to transfer all pattern markings and notches onto the fabric.

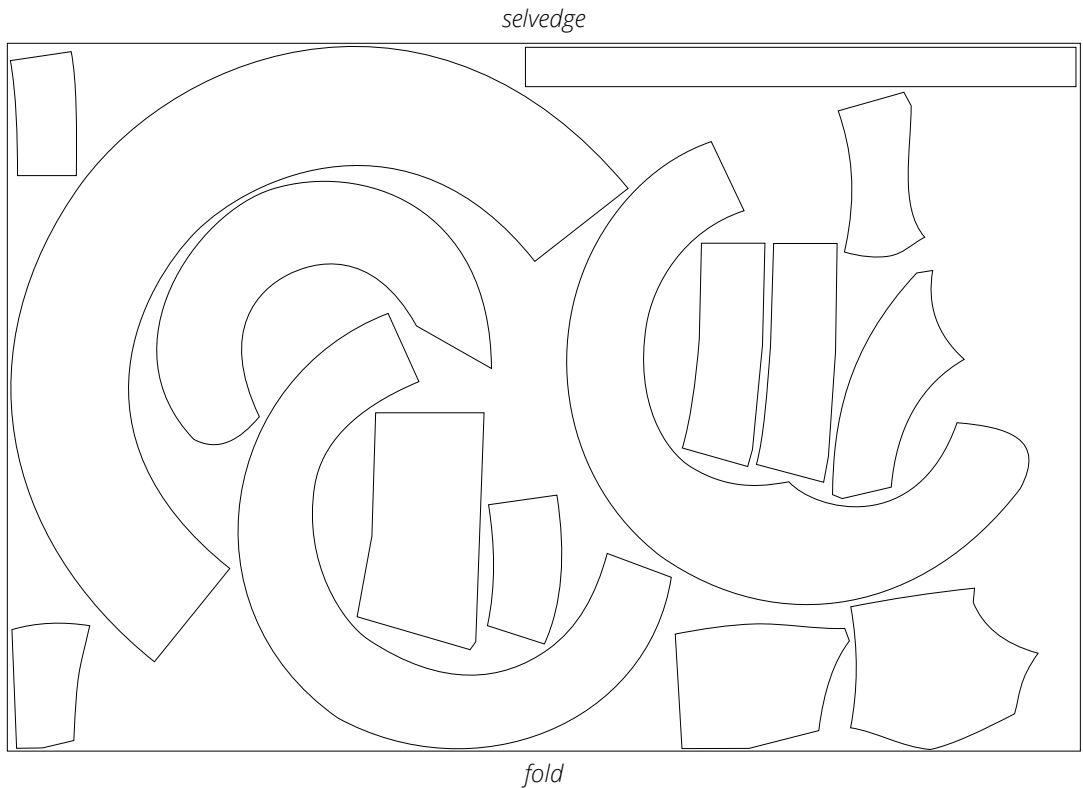
# SEAM ALLOWANCES

---

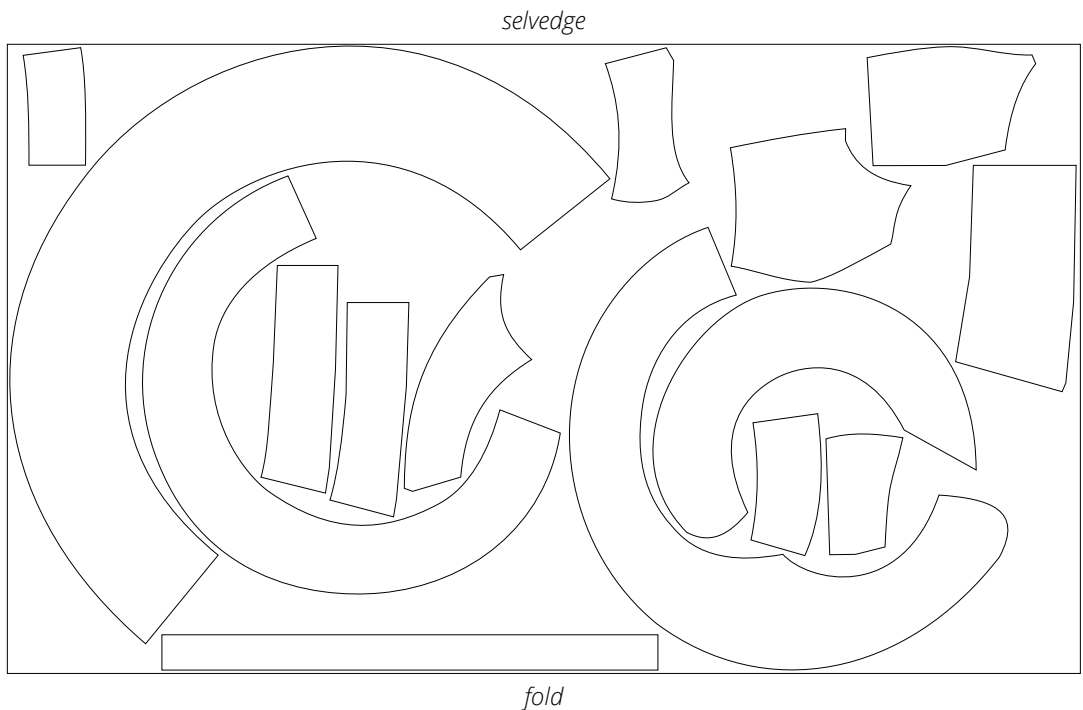
All pattern pieces include 1 cm (3/8") seam allowances.  
Take this into account when laying out the pattern pieces on the fabric.

# CUTTING LAYOUT

Main fabric, 140 cm (55") wide, with a directional print/nap,  
cut on fold, for sizes 34–40 in all heights

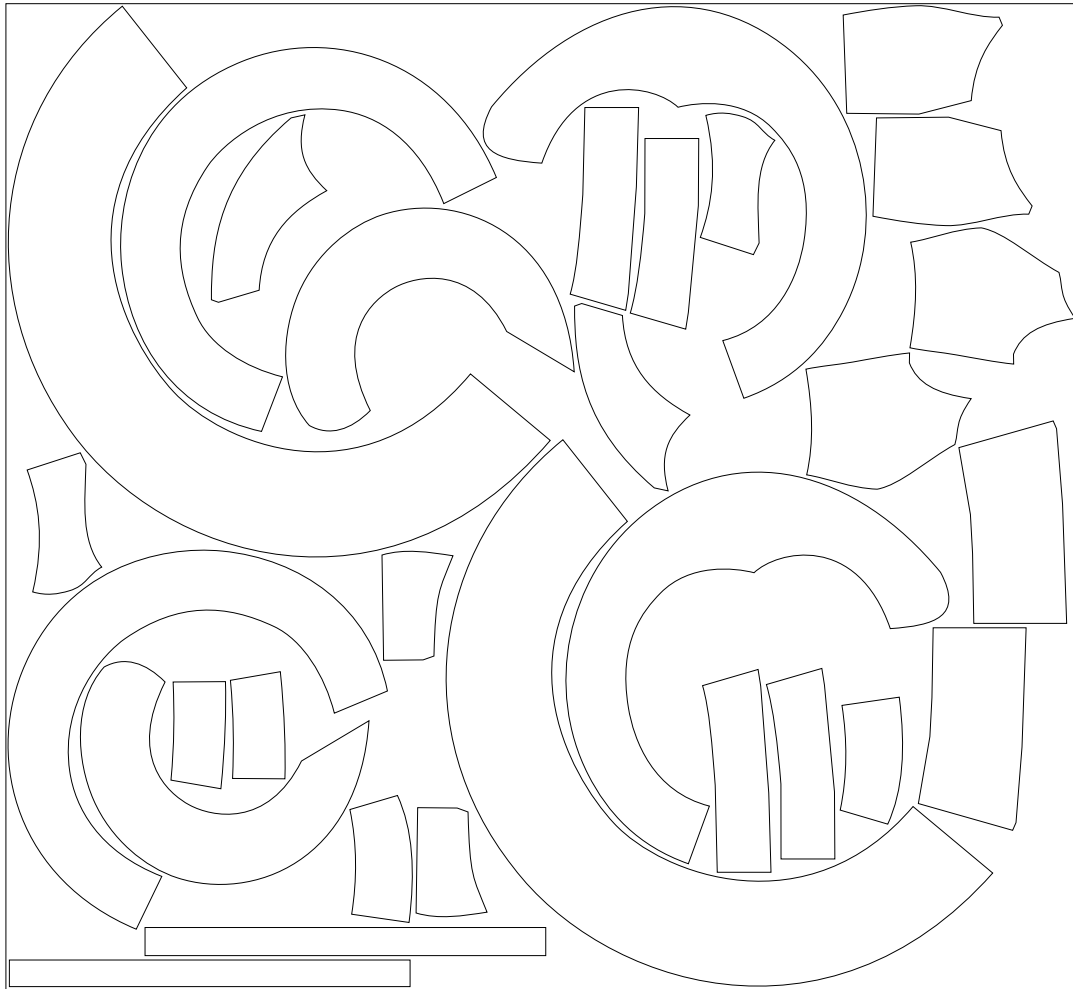


Main fabric, 140 cm (55") wide, with a directional print/nap,  
cut on fold, for sizes 42–46 in all heights



Main fabric, 140 cm (55") wide, with a directional print/nap,  
cut on a single layer, for sizes 48-52 in all heights

*selvedge*



*selvedge*

**READY? LET'S GET SEWING!**

---





Pull on both lower (bobbin) threads simultaneously to gather the top edge of the bottom ruffle piece to the length indicated on the pattern. Distribute the gathers evenly.

Similarly gather the top edges of all the ruffle pieces to the length indicated on the pattern.

Place the top edge of the bottom ruffle piece right sides together with bottom edge of the assembled bottom piece. Align the edges, match the notches and center front seams, and pin.



Machine-stitch, backstitching at the beginning and end of the seam.

Press the seam flat.



Place the mid ruffle piece wrong side down to the right side of the assembled bottom piece. Align the top edges, match the center front seams, and pin.