

FROM THE FOUNDER OF THE #VIKISEWS BRAND

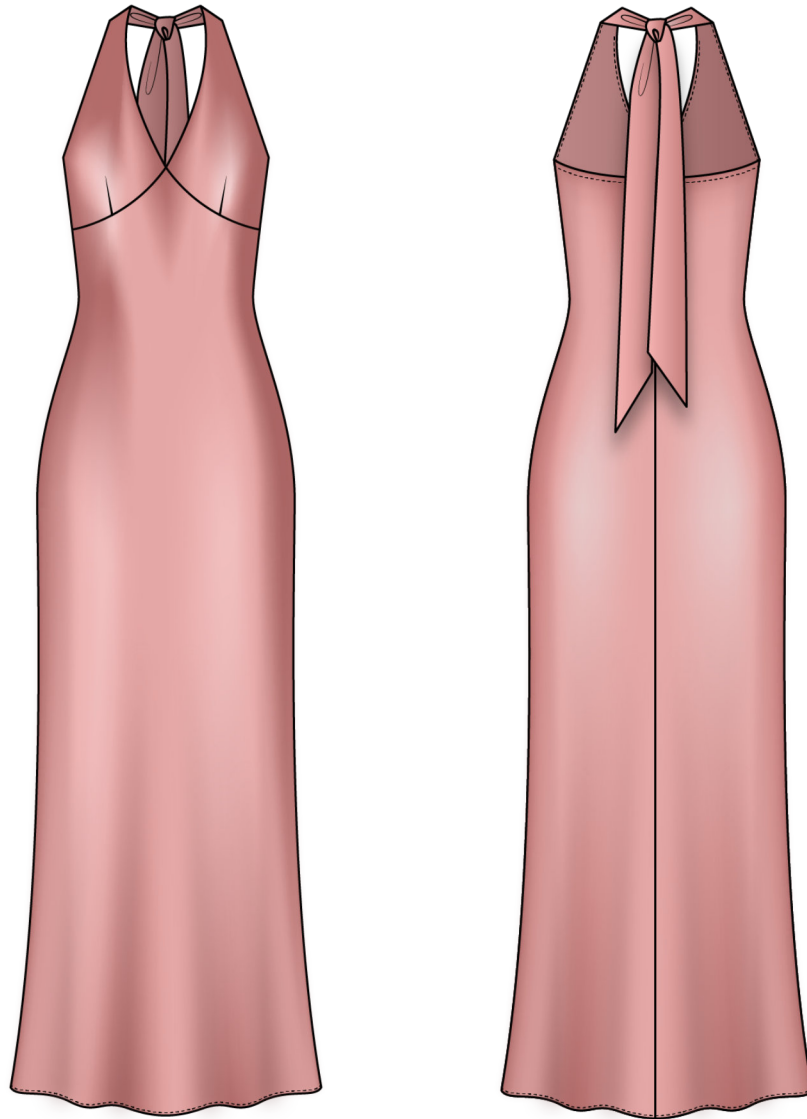


Back in 2016, when I was working on my first set of sewing instructions, I was trying to write them in such a way that even a complete beginner could easily understand and use them to create their very first garment. These instructions laid the foundation for the Vikisews brand, its vision and its mission. I wanted to create modern patterns with the utmost detailed and clear instructions.

Now, with each new collection we are constantly improving our instructions, amending them and adding more relevant details. By the time the final product reaches you, our drafters, correctors, and editors would have spent weeks perfecting every word and every photograph. If you compile a few of our instructions together, you will get a sewing manual that will assist you in sewing all kinds of garments at any difficulty level.

And I would be very happy if these instructions helped you to turn your hobby into a lifelong passion... Enjoy the process! Create your ultimate dream wardrobe! Wear your garments proudly for years to come!

If you have any questions, please contact us at info@vikisews.com — we are always there to help.



ALMEA PATTERN DESCRIPTION

Almea is a semi-fitted dress with an accentuated waist. The silhouette is achieved through a bias-cut design and a center back seam. The fully lined front yokes feature darts and form a deep V-shaped neckline. The dress has a shaped underbust seam and an open back. Almea is ankle-length.



IMPORTANT!

The contents of this pattern are copyright protected and belong exclusively to Vikisews. You may use Vikisews patterns for personal use. It is prohibited to share Vikisews patterns and instructions with third parties, as well as to publish patterns and instructions online for public access. **Non-compliance with the mentioned rules is a violation of the US copyright law and may result in civil liability and criminal prosecution.**

You may use Vikisews patterns for commercial use, to sew custom-made garments and/or create fashion collections, on the condition that the patterns are solely used in a manufacturing setting and are not further shared with individuals.

TOTAL EASE ALLOWANCE

	Bust ease (estimated)	Waistline ease (estimated)	Hipline ease (estimated)
cm	0	5.7–12.1	7
inches	0	2 1/4–4 3/4	2 3/4

GARMENT LENGTH

Height, cm	Back length from waist down, cm	Height, ft	Back length from waist down, in
1 (154–160)	87.1	1 (5'1"–5'3")	34 1/4
2 (162–168)	90.1	2 (5'4"–5'6")	35 1/2
3 (170–176)	93.1	3 (5'7"–5'9")	36 5/8
4 (178–184)	96.1	4 (5'10"–6'1")	37 7/8

SUGGESTED FABRIC

To sew this dress, choose medium-weight, soft, non-stretch or low-stretch dress-weight fabrics made of natural fibers, artificial fibers, blends, or synthetics.

The following fabrics are recommended: sateen, natural silk, artificial silk, challis, chiffon, dress-weight viscose.

The dress in the photo is made of natural silk. The fabric is soft, flexible, and low-stretch. The fiber content is 100% silk. The fabric weight is 130 g/m².

FABRIC AND NOTIONS REQUIREMENTS

1. Main fabric, 140 cm wide, with a directional print/nap, in meters:

Height, cm	Size									
	34	36	38	40	42	44	46	48	50	52
1 (154–160)	2.3	2.4	2.5	2.55	2.65	2.75	2.8	2.9	3	3.1
2 (162–168)	2.4	2.45	2.55	2.6	2.7	2.8	2.9	2.95	3.05	3.15
3 (170–176)	2.45	2.5	2.6	2.7	2.75	2.85	2.95	3	3.15	3.2
4 (178–184)	2.45	2.55	2.65	2.75	2.8	2.9	3	3.1	3.15	3.25

Main fabric, 55" wide, with a directional print/nap, in yards:

Height, ft	Size									
	34	36	38	40	42	44	46	48	50	52
1 (5'1"–5'3")	2 1/2	2 5/8	2 3/4	2 3/4	2 7/8	3	3	3 1/8	3 1/4	3 3/8
2 (5'4"–5'6")	2 5/8	2 5/8	2 3/4	2 7/8	3	3	3 1/8	3 1/4	3 3/8	3 1/2
3 (5'7"–5'9")	2 5/8	2 3/4	2 7/8	3	3	3 1/8	3 1/4	3 1/4	3 1/2	3 1/2
4 (5'10"–6'1")	2 5/8	2 3/4	2 7/8	3	3	3 1/8	3 1/4	3 3/8	3 1/2	3 1/2

***IMPORTANT!** When purchasing fabric, please account for shrinkage and buy 5% more than required.*

2. Matching thread — 2 spools

TOOLS AND EQUIPMENT

- sewing machine for construction

PATTERN PIECES LIST

From main fabric:

- front yoke — cut 4
- front — cut 1
- back — cut 2
- back top edge binding — cut 1

***IMPORTANT!** Don't forget to transfer all pattern markings and notches onto the fabric.*

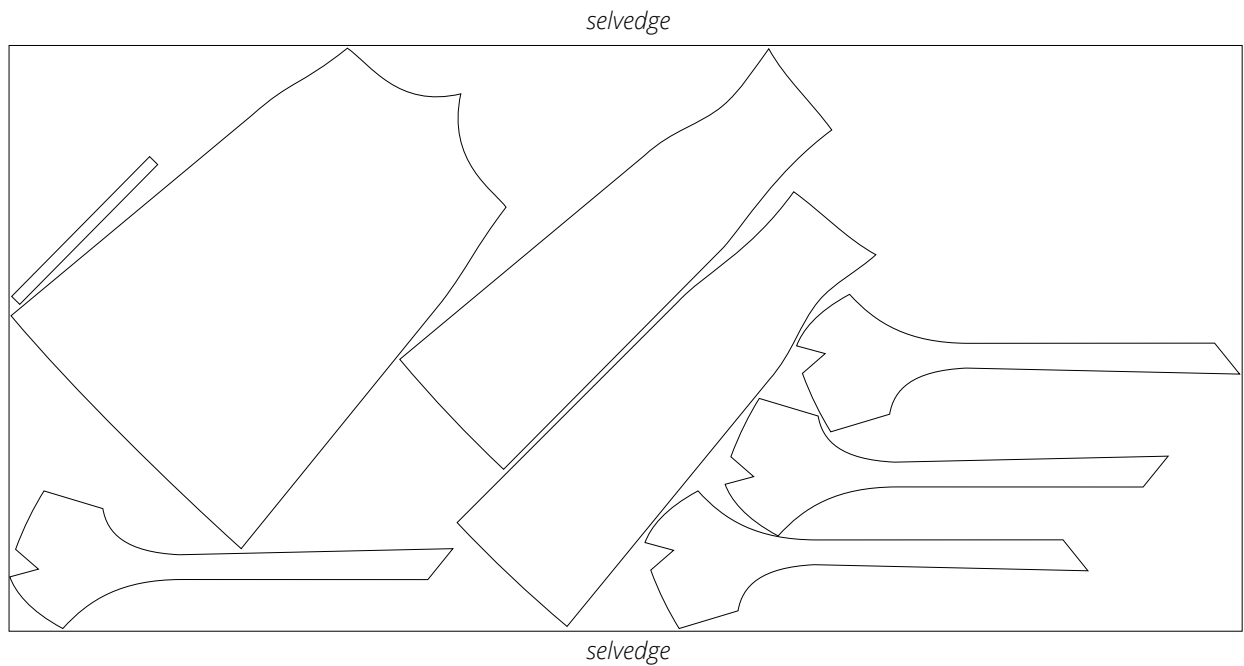
SEAM ALLOWANCES

All pattern pieces include 1 cm (3/8") seam allowances.

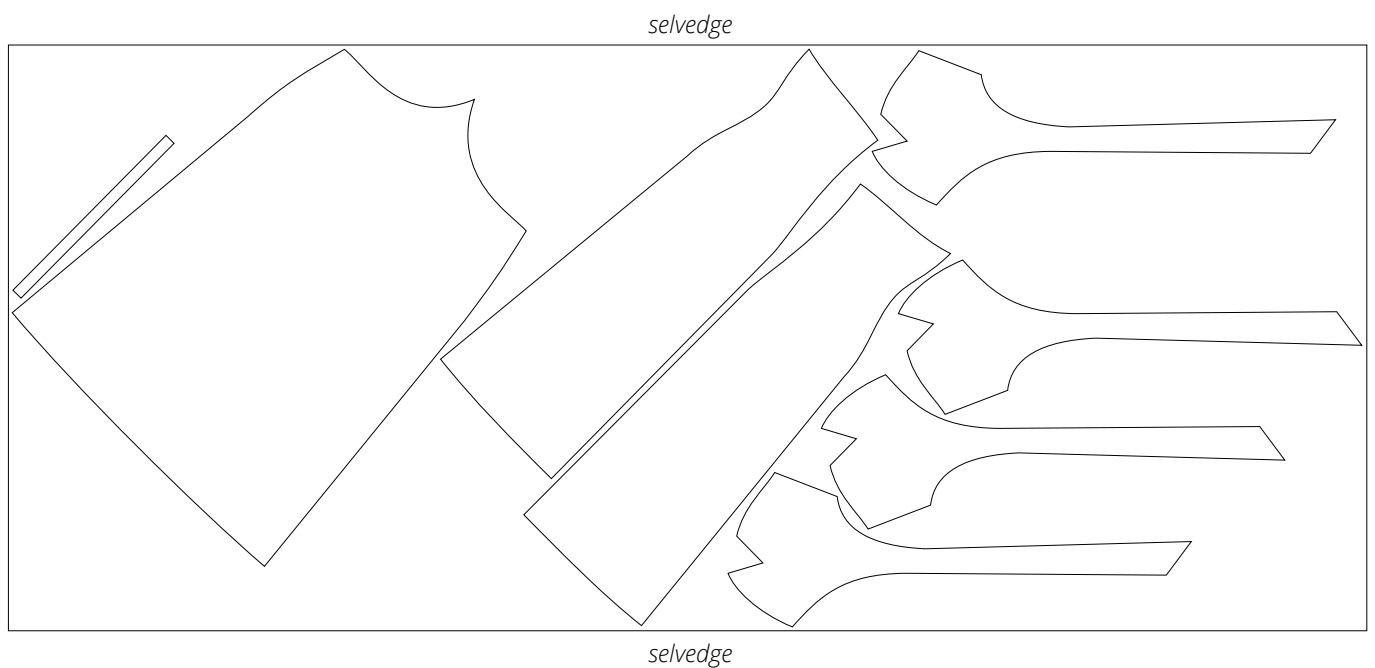
Take this into account when laying out the pattern pieces on the fabric.

CUTTING LAYOUT

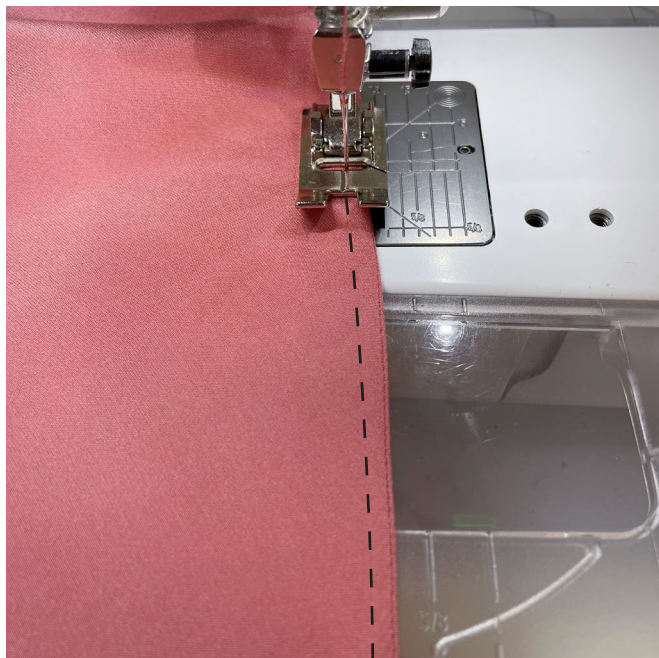
Main fabric, 140 cm (55") wide, with a directional print/nap, cut on a single layer, for sizes 34–52 in heights 1–2, sizes 34–48 in height 3, and sizes 34–46 in height 4



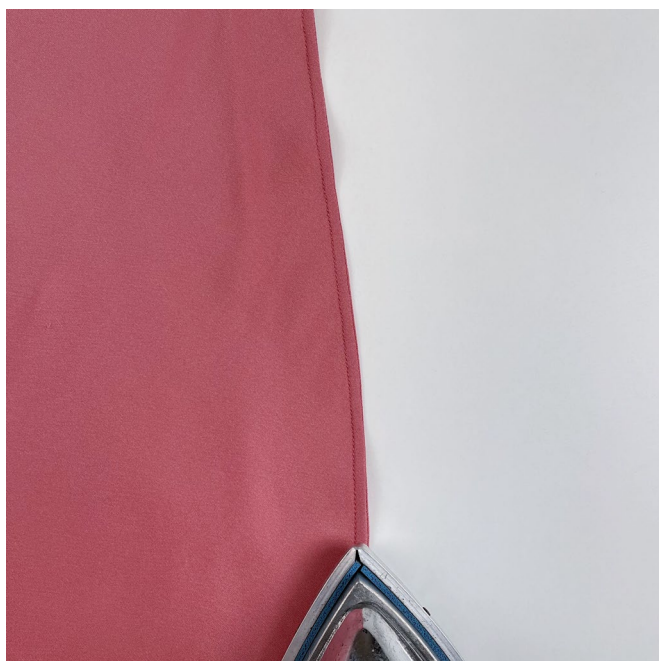
Main fabric, 140 cm (55") wide, with a directional print/nap, cut on a single layer, for sizes 50–52 in height 3 and sizes 48–52 in height 4



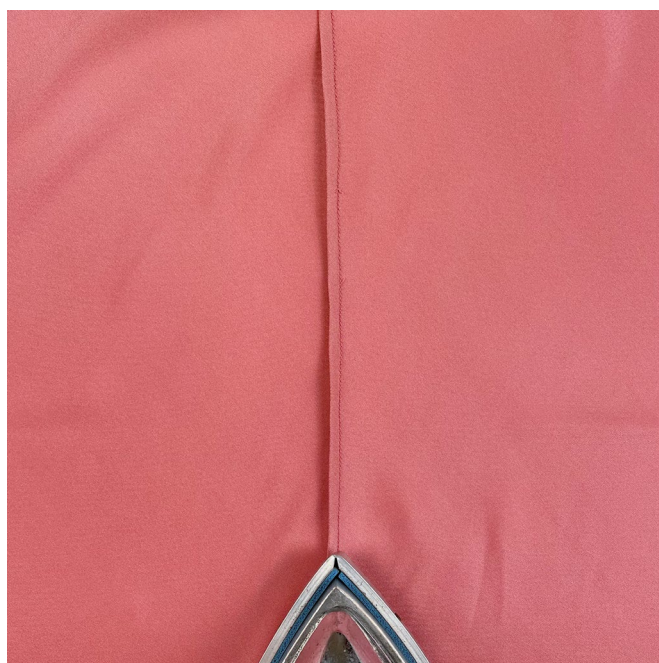
READY? LET'S GET SEWING!



Machine-stitch at 5 mm (just under 1/4") from the edge, backstitching at the beginning and end of the seam.



Press the seam flat.



Press the seam allowances towards the right-hand back piece.