

# FROM THE FOUNDER OF THE #VIKISEWS BRAND

---



Back in 2016, when I was working on my first set of sewing instructions, I was trying to write them in such a way that even a complete beginner could easily understand and use them to create their very first garment. These instructions laid the foundation for the Vikisews brand, its vision and its mission. I wanted to create modern patterns with the utmost detailed and clear instructions.

Now, with each new collection we are constantly improving our instructions, amending them and adding more relevant details. By the time the final product reaches you, our drafters, correctors, and editors would have spent weeks perfecting every word and every photograph. If you compile a few of our instructions together, you will get a sewing manual that will assist you in sewing all kinds of garments at any difficulty level.

And I would be very happy if these instructions helped you to turn your hobby into a lifelong passion... Enjoy the process! Create your ultimate dream wardrobe! Wear your garments proudly for years to come!

If you have any questions, please contact us at [info@vikisews.com](mailto:info@vikisews.com) — we are always there to help.



## JULIA PATTERN DESCRIPTION

---

Julia is a dress with a semi-fitted bodice, a full skirt, and an accentuated waist. The bodice is fitted with waist and bust darts. The dress has cutaway shoulders and a deep V-shaped neckline at the back up to the waistline. The skirt is gathered at the waist and has side seam pockets. The dress fastens with neckline and back ties as well as with an invisible zipper in the center back seam. Julia is above-ankle length.



## IMPORTANT!

---

The contents of this pattern are copyright protected and belong exclusively to Vikisews. You may use Vikisews patterns for personal use. It is prohibited to share Vikisews patterns and instructions with third parties, as well as to publish patterns and instructions online for public access. **Non-compliance with the mentioned rules is a violation of the US copyright law and may result in civil liability and criminal prosecution.**

You may use Vikisews patterns for commercial use, to sew custom-made garments and/or create fashion collections, on the condition that the patterns are solely used in a manufacturing setting and are not further shared with individuals.

## TOTAL EASE ALLOWANCE

	Bust ease (estimated)	Waistline ease	Hipline ease
cm	0	0	117–139
inches	0	0	46 1/8–54 3/4

## GARMENT LENGTH

Height, cm	Back length from waist down, cm	Height, ft	Back length from waist down, in
1 (154–160)	82	1 (5'1"–5'3")	32 1/4
2 (162–168)	85	2 (5'4"–5'6")	33 1/2
3 (170–176)	88	3 (5'7"–5'9")	34 5/8
4 (178–184)	91	4 (5'10"–6'1")	35 7/8

## SUGGESTED FABRIC

To sew this dress, choose medium-weight, pliable, structured, non-stretch or low-stretch, and opaque dress-weight fabrics made of natural fibers, artificial fibers, blends, or synthetics.

The following fabrics are recommended: cotton, gabardine, dress-weight denim, ramie, linen.

**Attention!** We do not recommend stretchy knit fabrics, lightweight sheer fabrics (chiffon, organza, stretch lace), or fabrics with a directional nap or print.

The dress in the photo is made of dress-weight cotton. The fabric is medium weight, pliable, soft, and structured. The fiber content is 100% cotton. The fabric weight is 170 g/m².

# FABRIC AND NOTIONS REQUIREMENTS

1. Main fabric, 140 cm wide, with a directional print/nap, in meters:

Height, cm	Size									
	34	36	38	40	42	44	46	48	50	52
1 (154–160)	2.7	2.8	2.95	3.25	3.6	3.7	3.75	3.8	3.85	3.95
2 (162–168)	2.8	3.15	3.5	3.6	3.65	3.75	3.8	3.85	3.9	4
3 (170–176)	3.1	3.45	3.55	3.6	3.7	3.8	3.85	3.9	3.95	4
4 (178–184)	3.4	3.5	3.55	3.7	3.75	3.8	3.9	3.95	4	4.05

Main fabric, 55" wide, with a directional print/nap, in yards:

Height, ft	Size									
	34	36	38	40	42	44	46	48	50	52
1 (5'1"–5'3")	3	3	3 1/4	3 1/2	3 7/8	4	4 1/8	4 1/8	4 1/4	4 3/8
2 (5'4"–5'6")	3	3 1/2	3 7/8	3 7/8	4	4 1/8	4 1/8	4 1/4	4 1/4	4 3/8
3 (5'7"–5'9")	3 3/8	3 3/4	3 7/8	3 7/8	4	4 1/8	4 1/4	4 1/4	4 3/8	4 3/8
4 (5'10"–6'1")	3 3/4	3 7/8	3 7/8	4	4 1/8	4 1/8	4 1/4	4 3/8	4 3/8	4 3/8

**IMPORTANT!** When purchasing fabric, please account for shrinkage and buy 5% more than required.

2. Lightweight interfacing, knit or woven, 140 cm (55") wide, for all sizes in all heights — 10 cm (4")
3. Stitched bias-cut fusible stay tape with stitch reinforcement, 1.5 cm (5/8") wide — 1.1 m (1 1/4 yd)
4. Stitched straight-grain fusible stay tape, 1.5 cm (5/8") wide — 0.85 m (7/8 yd)
5. One invisible zipper, 50 cm (19 5/8") long, for all sizes in all heights
6. One hook-and-eye closure
7. Matching thread — 5 spools (1 spool for the sewing machine + 4 spools for the overlocker)

## TOOLS AND EQUIPMENT

- sewing machine for construction
- overlocker for finishing raw edges. This may be replaced with a stretch overlock stitch or a zigzag stitch on the sewing machine (overlock or zigzag stitch width 2–3 mm, stitch length 2.5 mm)
- invisible zipper foot for the sewing machine
- one-sided foot for the sewing machine
- loop turner

# PATTERN PIECES LIST

---

## 1. From main fabric:

- front bodice — cut 2 on fold
- back bodice — cut 4
- neckline tie — cut 2
- back tie — cut 2
- front skirt — cut 1 on fold
- back skirt — cut 2
- front facing — cut 1 on fold
- back facing — cut 2
- pocket lining — cut 4

***IMPORTANT!** Don't forget to transfer all pattern markings and notches onto the fabric.*

## 2. From interfacing:

- front facing — cut 1 on fold
- back facing — cut 2

# SEAM ALLOWANCES

---

All pattern pieces include seam allowances as follows:

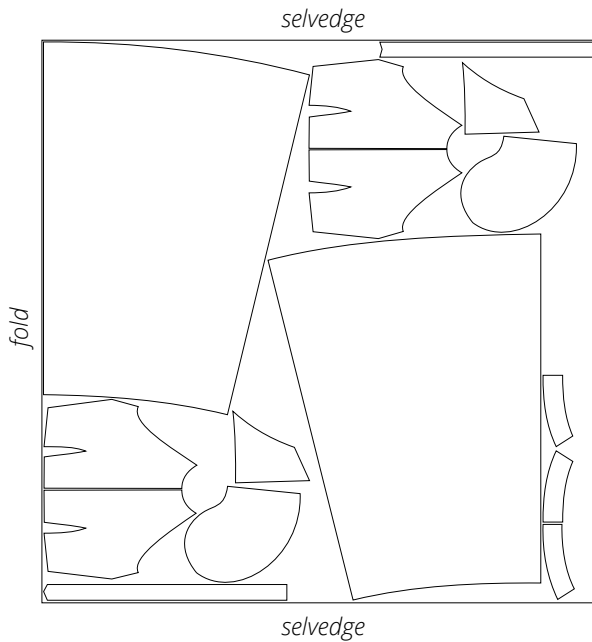
- center back seam allowance — 1.5 cm (5/8")
- all other edges — 1 cm (3/8")

Take this into account when laying out the pattern pieces on the fabric.

# CUTTING LAYOUT

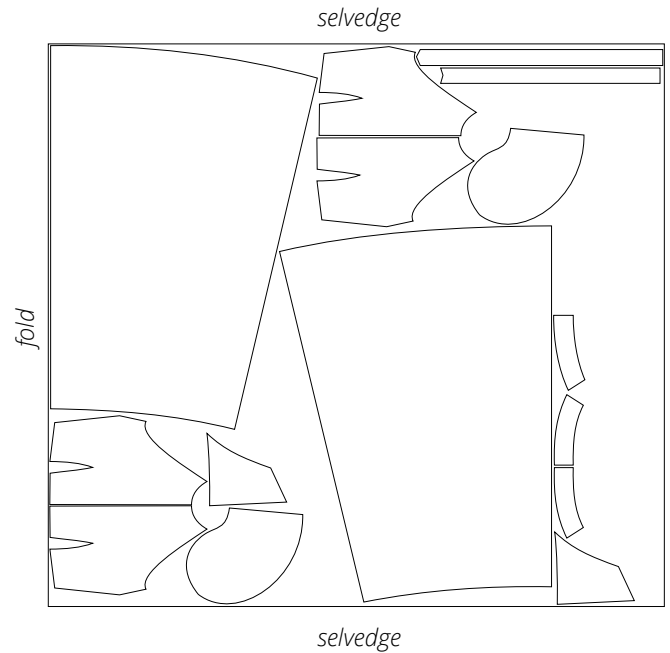
---

Main fabric, 140 cm (55") wide, cut on a crosswise fold, for sizes 34–38 in height 1 and size 34 in height 2



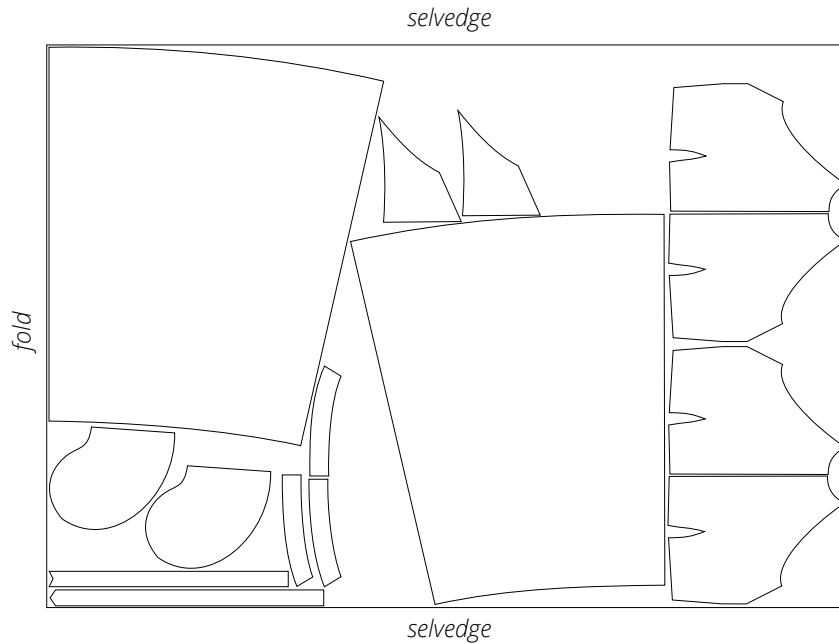
**Attention!** The front facing and front bodice pieces are cut on fold out of the leftover fabric.

Main fabric, 140 cm (55") wide, cut on a crosswise fold, for size 40 in height 1, size 36 in height 2, and size 34 in height 3



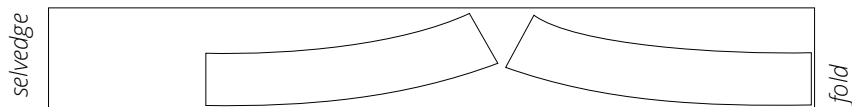
**Attention!** The front facing and front bodice pieces are cut on fold out of the leftover fabric.

Main fabric, 140 cm (55") wide, cut on a crosswise fold, for sizes 42–52 in height 1, sizes 38–52 in height 2, sizes 36–52 in height 3, and all sizes in height 4



**Attention!** Cut the front facing and front bodice pieces on fold out of the leftover fabric.

Interfacing, 140 cm (55") wide, cut on fold, for all sizes in all heights



# READY? LET'S GET SEWING!

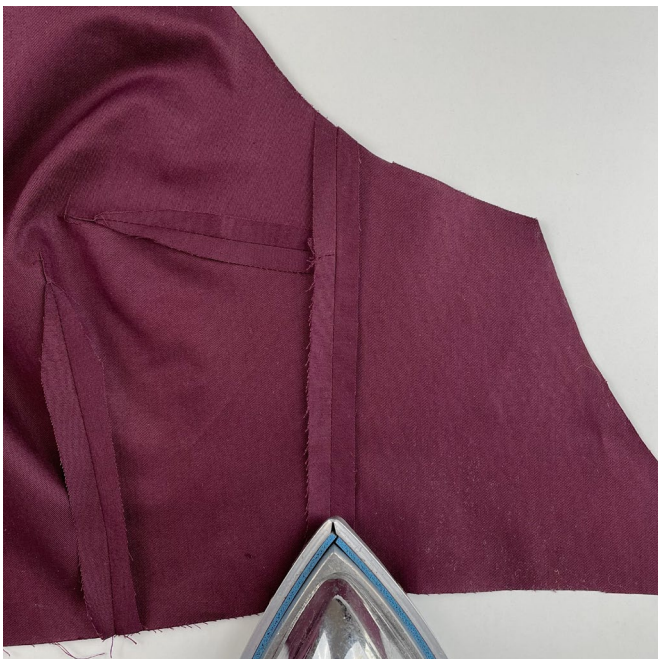




Press the dart seam allowances open.



Place the outer front bodice and back bodice pieces right sides together. Place the inner front bodice and back bodice right sides together. Align the side edges, match the notches, and pin.



Machine-stitch, backstitching at the beginning and end of the seam. Press the seam allowances open.