

FROM THE FOUNDER OF THE #VIKISEWS BRAND

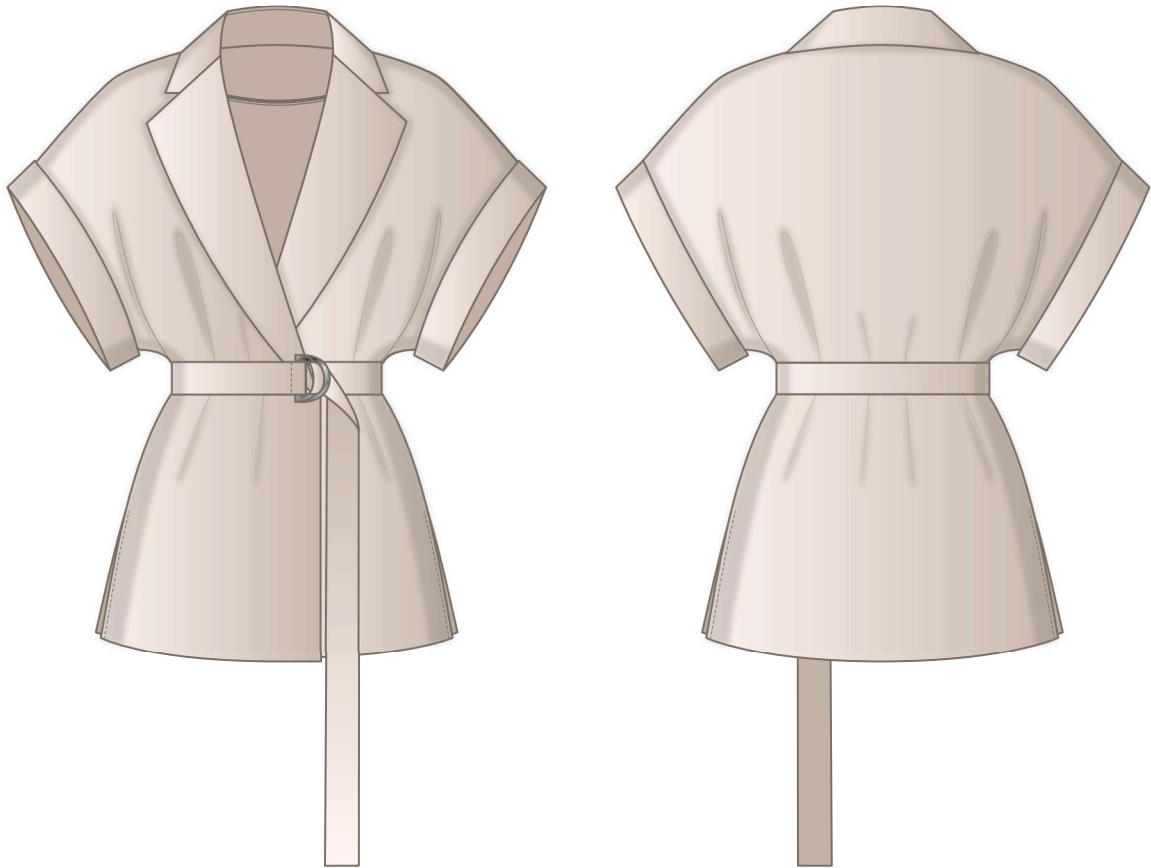


Back in 2016, when I was working on my first set of sewing instructions, I was trying to write them in such a way that even a complete beginner could easily understand and use them to create their very first garment. These instructions laid the foundation for the Vikisews brand, its vision and its mission. I wanted to create modern patterns with the utmost detailed and clear instructions.

Now, with each new collection we are constantly improving our instructions, amending them and adding more relevant details. By the time the final product reaches you, our drafters, correctors, and editors would have spent weeks perfecting every word and every photograph. If you compile a few of our instructions together, you will get a sewing manual that will assist you in sewing all kinds of garments at any difficulty level.

And I would be very happy if these instructions helped you to turn your hobby into a lifelong passion... Enjoy the process! Create your ultimate dream wardrobe! Wear your garments proudly for years to come!

If you have any questions, please contact us at info@vikisews.com — we are always there to help.



ALBERTA PATTERN DESCRIPTION

Alberta is a loose-fitting, drop-shoulder blouse with a straight cut. It has a notched turn-down collar and low armholes finished with turn-back cuffs. The side seams end with slits. The blouse features a double-breasted snap closure and a detachable belt that fastens at the waist with two D-rings. There are topstitched belt loops at the side seams. Alberta is hip-length.



IMPORTANT!

The contents of this pattern are copyright protected and belong exclusively to Vikisews. You may use Vikisews patterns for personal use. It is prohibited to share Vikisews patterns and instructions with third parties, as well as to publish patterns and instructions online for public access. **Non-compliance with the mentioned rules is a violation of the US copyright law and may result in civil liability and criminal prosecution.**

You may use Vikisews patterns for commercial use, to sew custom-made garments and/or create fashion collections, on the condition that the patterns are solely used in a manufacturing setting and are not further shared with individuals.

TOTAL EASE ALLOWANCE

	Bust ease (estimated)	Waistline ease	Hipline ease
cm	14.5–6.9	43.2–41.1	16.1
inches	5 3/4–2 3/4	17–16 1/8	6 3/8

GARMENT LENGTH, SHOULDER LENGTH

Height, cm	Back length, cm	Shoulder length including cuff, cm
1 (154–160)	65.1–68.7	26.3–30
2 (162–168)	69.1–72.7	26.8–30.5
3 (170–176)	73.1–76.7	27–30.7
4 (178–184)	77.1–80.7	27.2–30.9

Height, ft	Back length, in	Shoulder length including cuff, in
1 (5'1"–5'3")	25 5/8–27	10 3/8–11 3/4
2 (5'4"–5'6")	27 1/4–28 5/8	10 1/2–12
3 (5'7"–5'9")	28 3/4–30 1/4	10 5/8–12 1/8
4 (5'10"–6'1")	30 3/8–31 3/4	10 3/4–12 1/8

SUGGESTED FABRIC

To sew this blouse, choose dress-weight or suiting fabrics with the following properties:

- medium weight, soft, non-stretch or low-stretch
- the fiber content can include natural fibers (silk), artificial fibers (viscose), blends (silk + polyester, silk + viscose, etc.), or synthetics (polyester, polyester + elastane)

The following fabrics are recommended: satin, linen, artificial silk, natural silk.

Attention! We do not recommend stretchy knit fabrics.

The blouse in the photo is made of blended fabric. The fabric is medium weight, soft, and non-stretch. The fiber content is cotton and natural silk. The fabric weight is 180 g/m².

FABRIC AND NOTIONS REQUIREMENTS

1. Main fabric, 140 cm wide, with a directional print/nap, 120–210 g/m², in meters:

Height, cm	Size							
	34–36	38	40	42	44	46	48	50–52
1 (154–160)	1.65	1.65	1.7	1.85	2	2	2	2.05
2 (162–168)	1.65	1.65	1.75	1.9	2	2	2.1	2.1
3 (170–176)	1.65	1.65	1.85	2	2	2.05	2.2	2.2
4 (178–184)	1.7	1.75	1.95	2.05	2.1	2.1	2.25	2.3

Main fabric, 55" wide, with a directional print/nap, 120–210 g/m², in yards:

Height, ft	Size							
	34–36	38	40	42	44	46	48	50–52
1 (5'1"–5'3")	1 3/4	1 3/4	1 7/8	2	2 1/8	2 1/8	2 1/8	2 1/4
2 (5'4"–5'6")	1 3/4	1 3/4	1 7/8	2 1/8	2 1/8	2 1/8	2 1/4	2 1/4
3 (5'7"–5'9")	1 3/4	1 3/4	2	2 1/8	2 1/8	2 1/4	2 3/8	2 3/8
4 (5'10"–6'1")	1 7/8	1 7/8	2 1/8	2 1/4	2 1/4	2 1/4	2 1/2	2 1/2

2. Lightweight interfacing, knit or woven, 140 cm wide, 30 g/m², in meters:

Height, cm	Size		
	34–38	40–46	48–52
1 (154–160)	0.85	0.9	0.95
2 (162–168)	0.85	0.9	0.95
3 (170–176)	0.85	0.9	0.95
4 (178–184)	0.85	0.9	0.95

Lightweight interfacing, knit or woven, 55" wide, 30 g/m², in yards:

Height, ft	Size		
	34–38	40–46	48–52
1 (5'1"–5'3")	3/8	3/8	3/8
2 (5'4"–5'6")	3/8	3/8	3/8
3 (5'7"–5'9")	3/8	3/8	3/8
4 (5'10"–6'1")	3/8	3/8	3/8

IMPORTANT! When purchasing fabric, please account for shrinkage and buy 5% more than required.

3. Stitched bias-cut fusible stay tape, 1.5 cm (5/8") wide — 1.84–2.35 m (2–2 5/8 yd)
4. Stitched straight-grain fusible stay tape, 1 cm (3/8") wide — 0.95–1.08 m (1–1 1/8 yd)
5. Two sew-on snaps, 1–1.5 cm (3/8–5/8") in diameter
6. Two metal D-rings, 5 cm (2") wide
7. Matching thread — 5 spools (1 spool for the sewing machine + 4 spools for the overlocker)

TOOLS AND EQUIPMENT

- sewing machine for construction
- overlocker for finishing raw edges. This may be replaced with a stretch overlock stitch or a zigzag stitch on the sewing machine (overlock or zigzag stitch width 2–3 mm, stitch length 2.5 mm)
- stitch-in-the-ditch foot for the sewing machine (optional)
- loop turner

PATTERN PIECES LIST

1. From main fabric:

- front — cut 2
- back — cut 1 on fold
- cuff — cut 2
- upper collar — cut 1
- undercollar — cut 1
- collar stand — cut 2
- back neck facing — cut 1
- front facing — cut 2
- belt loop — cut 1
- belt — cut 1 on fold

IMPORTANT! Don't forget to transfer all pattern markings and notches onto the fabric.

2. From interfacing:

- front facing — cut 2
- back neck facing — cut 1 on fold
- upper collar — cut 1
- undercollar — cut 1
- collar stand — cut 2
- belt — cut 2

SEAM ALLOWANCES

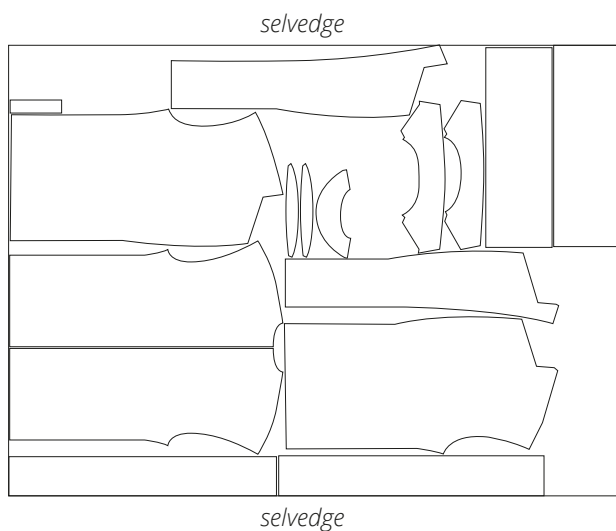
All pattern pieces include seam allowances as follows:

- garment hem allowance — 3 cm (1 1/8")
- all other edges — 1 cm (3/8")

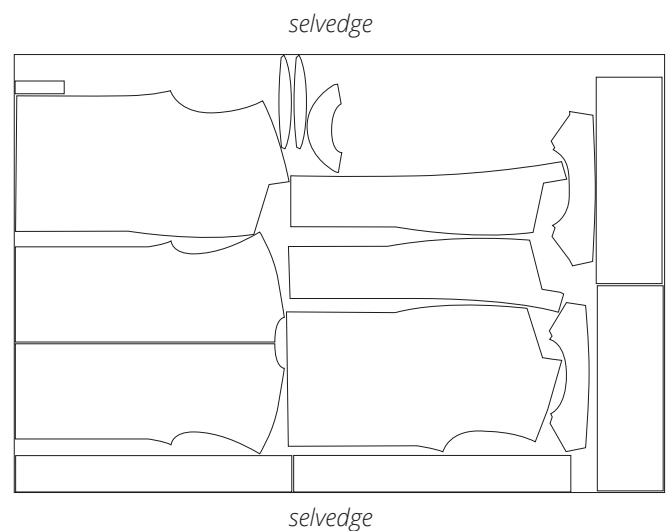
Take this into account when laying out the pattern pieces on the fabric.

CUTTING LAYOUT

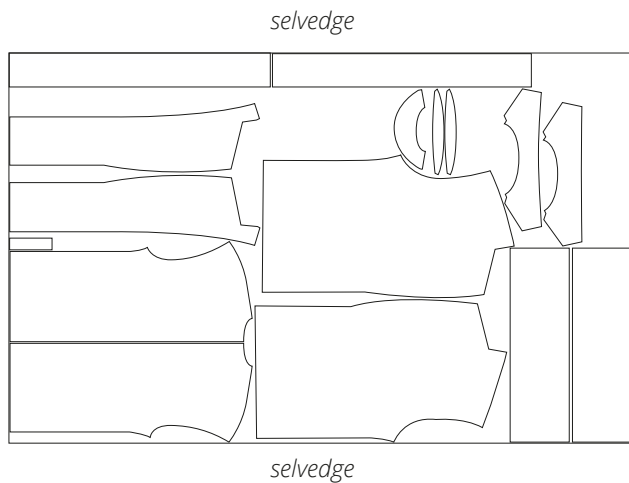
Main fabric, 140 cm (55") wide, with a directional print/nap, cut on a single layer, for sizes 34–40 in all heights



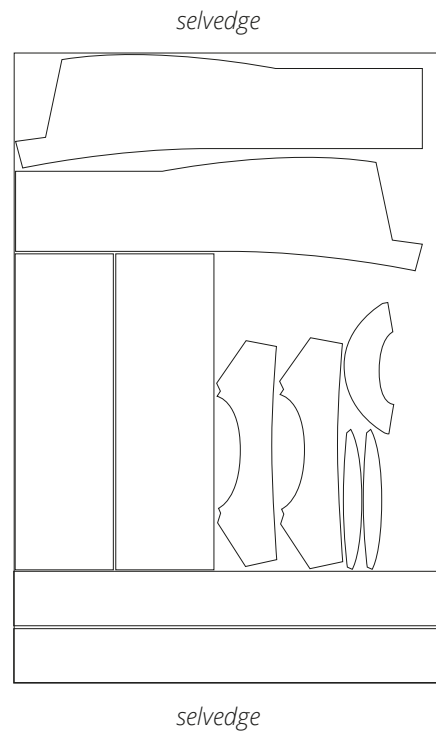
Main fabric, 140 cm (55") wide, with a directional print/nap, cut on a single layer, for sizes 42–46 in all heights



Main fabric, 140 cm (55") wide, with a directional print/nap, cut on a single layer, for sizes 48–52 in all heights



Interfacing, 140 cm (55") wide, cut on a single layer, for all sizes in all heights



Attention! To minimize the interfacing material requirements, cut the belt piece in two equal parts separated in the middle.

READY? LET'S GET SEWING!



Place the front and back pieces right sides together. Align the shoulder edges, match the notches, and pin.

Machine-stitch, backstitching at the beginning and end of the seam.



Overlock the shoulder seam allowances, with the back piece facing up.

Press the seam flat.



Press the shoulder seam allowances towards the front piece.