

# FROM THE FOUNDER OF THE #VIKISEWS BRAND

---

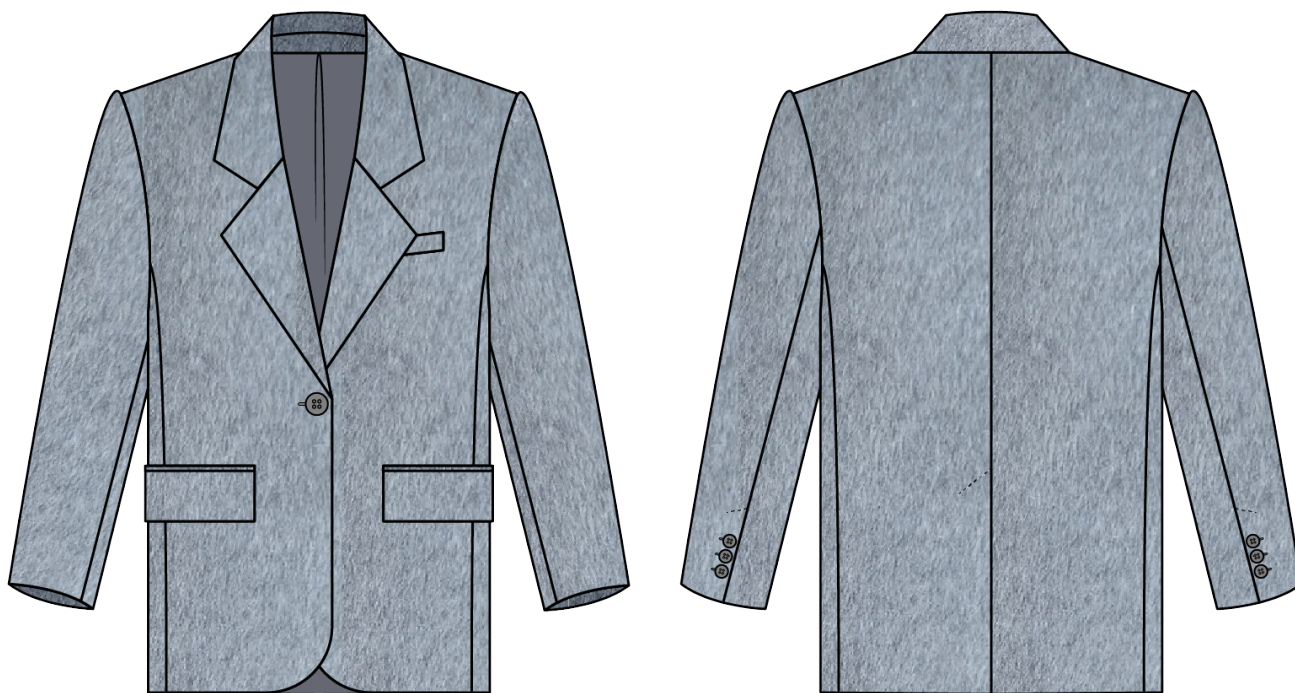


Back in 2016, when I was working on my first set of sewing instructions, I was trying to write them in such a way that even a complete beginner could easily understand and use them to create their very first garment. These instructions laid the foundation for the Vikisews brand, its vision and its mission. I wanted to create modern patterns with the utmost detailed and clear instructions.

Now, with each new collection we are constantly improving our instructions, amending them and adding more relevant details. By the time the final product reaches you, our drafters, correctors, and editors would have spent weeks perfecting every word and every photograph. If you compile a few of our instructions together, you will get a sewing manual that will assist you in sewing all kinds of garments at any difficulty level.

And I would be very happy if these instructions helped you to turn your hobby into a lifelong passion... Enjoy the process! Create your ultimate dream wardrobe! Wear your garments proudly for years to come!

If you have any questions, please contact us at [info@vikisews.com](mailto:info@vikisews.com) — we are always there to help.



## OCTAVIA PATTERN DESCRIPTION

---

Octavia is an oversized, fully lined blazer with a straight cut. The shoulder line is extended and supported with high shoulder pads. The back features a center seam ending with a vent. The front has a welt chest pocket on the left side and two double welt pockets with flaps. The long, set-in, two-piece sleeves have a vent with buttons and buttonholes. There is a turned-down, notched collar with a separate collar stand. The blazer closes with one button and buttonhole and is below-hip length.



## IMPORTANT!

---

The contents of this pattern are copyright protected and belong exclusively to Vikisews. You may use Vikisews patterns for personal use. It is prohibited to share Vikisews patterns and instructions with third parties, as well as to publish patterns and instructions online for public access. **Non-compliance with the mentioned rules is a violation of the US copyright law and may result in civil liability and criminal prosecution.**

You may use Vikisews patterns for commercial use, to sew custom-made garments and/or create fashion collections, on the condition that the patterns are solely used in a manufacturing setting and are not further shared with individuals.

# TOTAL EASE ALLOWANCE

	Bust ease	Waistline ease	Hipline ease	Upper arm ease
cm	33.9–27.1	45.5–42.2	19.5–16.2	12–8.7
inches	13 3/8–10 5/8	17 7/8–16 5/8	7 5/8–6 3/8	4 3/4–3 3/8

# GARMENT LENGTH, SLEEVE LENGTH

Height, cm	Back length, cm	Sleeve length, cm
1 (154–160)	72.4–72.1	62.5–64.4
2 (162–168)	75.4–75.1	64.5–66.4
3 (170–176)	78.4–78.1	66.3–68.2
4 (178–184)	81.4–81.1	68.3–70.2

Height, ft	Back length, in	Sleeve length, in
1 (5'1"–5'3")	28 1/2–28 3/8	24 5/8–25 3/8
2 (5'4"–5'6")	29 5/8	25 3/8–26 1/8
3 (5'7"–5'9")	30 7/8–30 3/4	26 1/8–26 7/8
4 (5'10"–6'1")	32–31 7/8	26 7/8–27 5/8

# SUGGESTED FABRIC

To sew this blazer, choose suiting fabrics with the following properties:

- medium weight, pliable, structured, non-stretch or low-stretch
- the fiber content can include natural fibers (wool), artificial fibers (viscose), blends (wool + silk, wool + polyester, etc.), and synthetics (polyester)
- the following fabrics are recommended: suiting fabric, coating fabric.

**Attention!** We do not recommend stretchy fabrics (knits), lightweight soft fabrics (dress-weight wool), or loosely woven suiting fabrics.

For the lining, choose lining fabrics made of artificial fibers (viscose), blends (viscose + elastane, viscose + polyester), or synthetics (polyester, polyester + elastane).

The blazer in the photo is made of wool coating. The fabric is medium weight, soft, structured, and non-stretch. The fiber content is 100% wool.  
The fabric weight is 470 g/m<sup>2</sup>.

The lining is a blend of 55% viscose and 45% polyester. The fabric weight is 95 g/m<sup>2</sup>.

# FABRIC AND NOTIONS REQUIREMENTS

1. Main fabric, 140 cm wide, 350–500 g/m<sup>2</sup>, with a directional print/nap, in meters:

Height, cm	Size					
	34	36–38	40–42	44–46	48–50	52
1 (154–160)	2.05	2.1	2.2	2.2	2.25	2.3
2 (162–168)	2.1	2.15	2.25	2.3	2.3	2.35
3 (170–176)	2.15	2.2	2.35	2.35	2.35	2.45
4 (178–184)	2.25	2.25	2.4	2.45	2.45	2.55

Main fabric, 55" wide, 350–500 g/m<sup>2</sup>, with a directional print/nap, in yards:

Height, ft	Size					
	34	36–38	40–42	44–46	48–50	52
1 (5'1"–5'3")	2 1/4	2 1/4	2 3/8	2 3/8	2 1/2	2 1/2
2 (5'4"–5'6")	2 1/4	2 3/8	2 1/2	2 1/2	2 1/2	2 5/8
3 (5'7"–5'9")	2 3/8	2 3/8	2 5/8	2 5/8	2 5/8	2 5/8
4 (5'10"–6'1")	2 1/2	2 1/2	2 5/8	2 5/8	2 5/8	2 3/4

2. Lining fabric, 140 cm wide, 95 g/m<sup>2</sup>, with a directional print, in meters:

Height, cm	Size					
	34-36	38-40	42	44	46	48-52
1 (154-160)	1.4	1.45	1.5	1.55	1.6	1.65
2 (162-168)	1.45	1.45	1.55	1.6	1.65	1.7
3 (170-176)	1.5	1.5	1.6	1.65	1.7	1.75
4 (178-184)	1.55	1.55	1.65	1.7	1.8	1.8

Lining fabric, 55" wide, with a directional print, 95 g/m<sup>2</sup>, in yards:

Height, ft	Size					
	34-36	38-40	42	44	46	48-52
1 (5'1"-5'3")	1 1/2	1 5/8	1 5/8	1 3/4	1 3/4	1 3/4
2 (5'4"-5'6")	1 5/8	1 5/8	1 3/4	1 3/4	1 3/4	1 7/8
3 (5'7"-5'9")	1 5/8	1 5/8	1 3/4	1 3/4	1 7/8	1 7/8
4 (5'10"-6'1")	1 3/4	1 3/4	1 3/4	1 7/8	2	2

3. Knit or woven lightweight interfacing, 140 cm wide, 55 g/m<sup>2</sup>, in meters:

Height, cm	Size									
	34	36	38	40	42	44	46	48	50	52
1 (154-160)	2	2	2.05	2.05	2.1	2.2	2.25	2.25	2.3	2.3
2 (162-168)	2	2.05	2.05	2.1	2.15	2.25	2.3	2.3	2.35	2.4
3 (170-176)	2.05	2.1	2.1	2.1	2.2	2.3	2.35	2.4	2.4	2.45
4 (178-184)	2.1	2.15	2.15	2.2	2.2	2.35	2.4	2.45	2.45	2.5

Knit or woven lightweight interfacing, 55" wide, 55 g/m<sup>2</sup>, in yards:

Height, ft	Size									
	34	36	38	40	42	44	46	48	50	52
1 (5'1"-5'3")	2 1/8	2 1/8	2 1/4	2 1/4	2 1/4	2 3/8	2 1/2	2 1/2	2 1/2	2 1/2
2 (5'4"-5'6")	2 1/8	2 1/4	2 1/4	2 1/4	2 3/8	2 1/2	2 1/2	2 1/2	2 5/8	2 5/8
3 (5'7"-5'9")	2 1/4	2 1/4	2 1/4	2 1/4	2 3/8	2 1/2	2 5/8	2 5/8	2 5/8	2 5/8
4 (5'10"-6'1")	2 1/4	2 3/8	2 3/8	2 3/8	2 3/8	2 5/8	2 5/8	2 5/8	2 5/8	2 3/4

4. Non-woven buckram, 150 cm wide, 175 g/m<sup>2</sup>, in meters:

Height, cm	Size	
	34-38	40-52
1 (154-160)	0.3	0.35
2 (162-168)	0.3	0.35
3 (170-176)	0.3	0.35
4 (178-184)	0.3	0.35

Non-woven buckram, 59" wide, 175 g/m<sup>2</sup>, in yards:

Height, ft	Size	
	34-38	40-52
1 (5'1"-5'3")	3/8	3/8
2 (5'4"-5'6")	3/8	3/8
3 (5'7"-5'9")	3/8	3/8
4 (5'10"-6'1")	3/8	3/8

**IMPORTANT!** When purchasing fabric, please account for shrinkage and buy 5% more than required.

5. Stitched straight-grain fusible stay tape, 1 cm (3/8") wide — 1.11 m (1 1/4 yd)

6. Stitched bias-cut fusible stay tape, 1.5 cm (5/8") wide — 4.62-5.17 m (5-5 5/8 yd)

7. One pair of sleeve heads

8. One pair of layered shoulder pads (made out of non-woven material, 150 cm [59"] wide), 36 cm (14 1/8") long and 3 cm (1 1/8") tall

9. One button, 2.5 cm (1") in diameter

10. Six buttons, 1.5 cm (5/8") in diameter

11. Matching thread for the main fabric — 1 spool

12. Matching thread for the lining fabric — 1 spool

## TOOLS AND EQUIPMENT

- sewing machine for construction
- buttonhole foot for the sewing machine
- stitch-in-the-ditch foot for the sewing machine (optional)
- one-sided foot for the sewing machine

# PATTERN PIECES LIST

---

## 1. From main fabric:

- front — cut 2
- back — cut 2
- side — cut 2
- top sleeve — cut 2
- bottom sleeve — cut 2
- undercollar — cut 1 on fold
- upper collar — cut 1 on fold
- collar stand — cut 2
- front facing — cut 2
- top flap — cut 2
- chest pocket welt — cut 1
- chest pocket facing — cut 1
- top pocket welt — cut 2
- bottom pocket welt — cut 2
- pocket facing — cut 2

## 2. From lining fabric:

- front lining — cut 2
- back lining — cut 2
- top sleeve lining — cut 2
- bottom sleeve lining — cut 2
- bottom flap — cut 2
- pocket top lining — cut 2
- pocket bottom lining — cut 2
- chest pocket top lining — cut 1
- chest pocket bottom lining — cut 1

**IMPORTANT!** Don't forget to transfer all pattern markings and notches onto the fabric.

## 3. From interfacing:

- back — cut 2
- back (2nd interfacing layer) — cut 2
- back (3rd interfacing layer) — cut 2
- front — cut 2
- front (2nd interfacing layer) — cut 2
- front (3rd interfacing layer) — cut 2
- side — cut 2
- side (2nd interfacing layer) — cut 2
- chest pocket interfacing strip — cut 1
- pocket interfacing strip — cut 2
- top sleeve (sleeve cap and bottom part) — cut 2
- bottom sleeve (sleeve cap and bottom part) — cut 2
- upper collar — cut 1 on fold
- undercollar — cut 1 on fold
- collar stand — cut 2
- front facing — cut 2
- top flap — cut 2
- top pocket welt — cut 2
- bottom pocket welt — cut 2
- chest pocket welt — cut 1

# SEAM ALLOWANCES

---

All pattern pieces include seam allowances as follows:

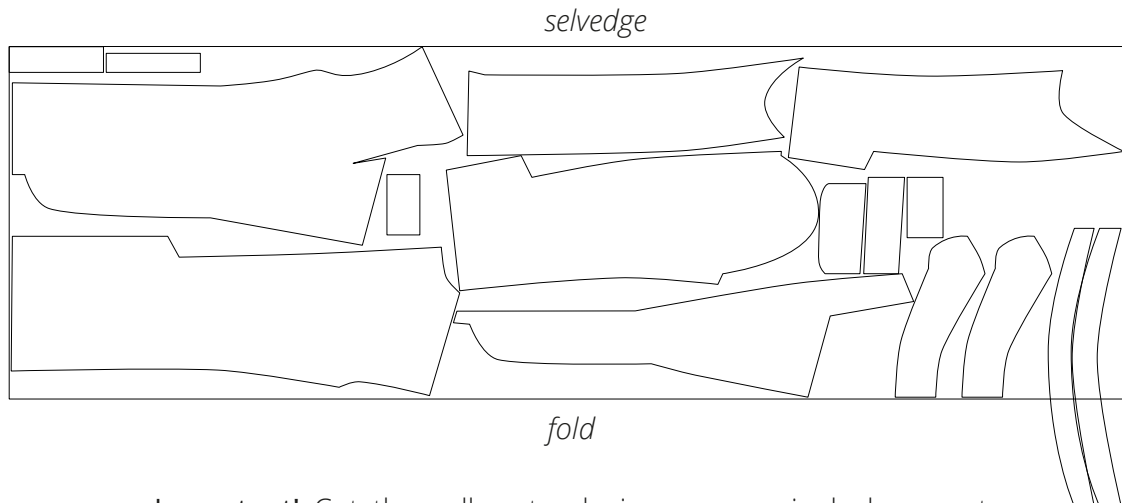
- garment hem allowance — 4 cm (1 5/8")
- sleeve hem allowance — 4 cm (1 5/8")
- pocket lining curved edges — 1.5 cm (5/8")
- all other edges — 1 cm (3/8")

Take this into account when laying out pattern pieces on the fabric.

# CUTTING LAYOUT

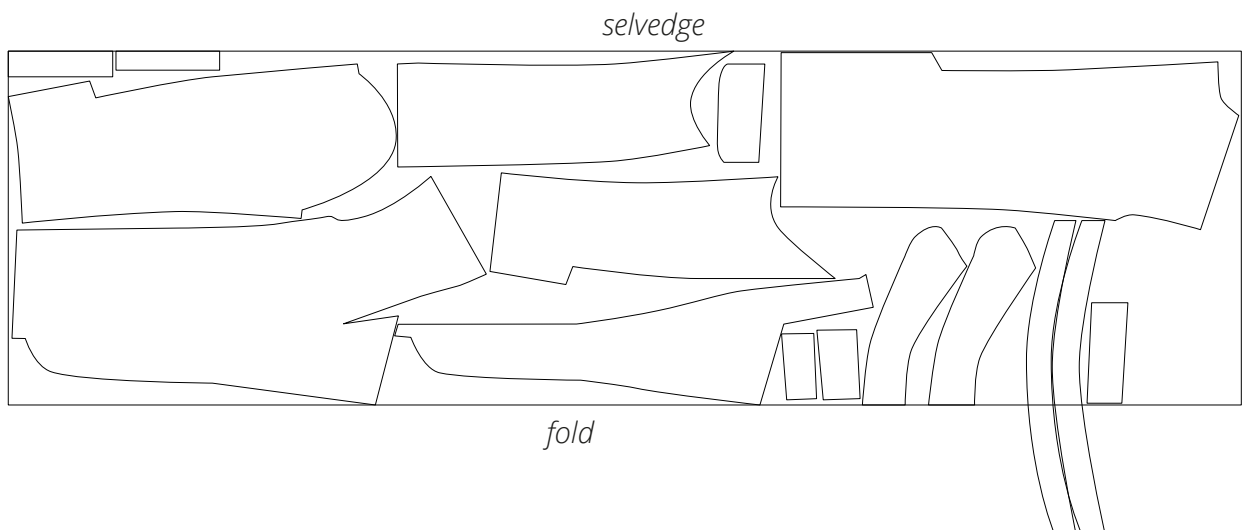
---

Main fabric, 140 cm (55") wide, with a directional print/nap,  
cut on fold, for sizes 34–38 in all heights



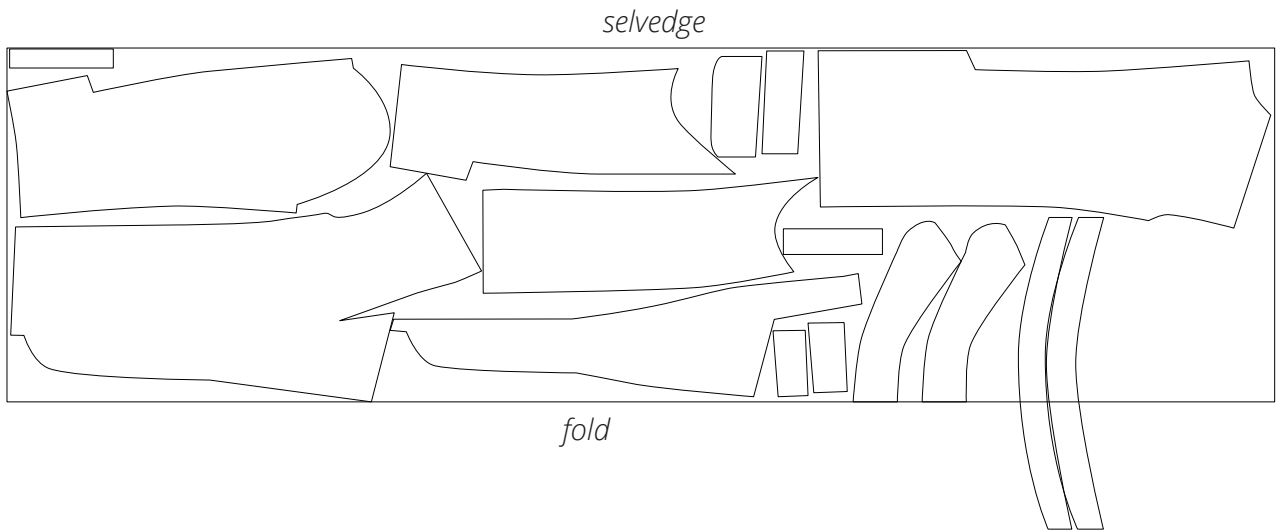
**Important!** Cut the collar stand pieces on a single layer out of leftover fabric. Cut one each of the chest pocket welt and chest pocket facing pieces.

Main fabric, 140 cm (55") wide, with a directional print/nap,  
cut on fold, for sizes 40–50 in all heights



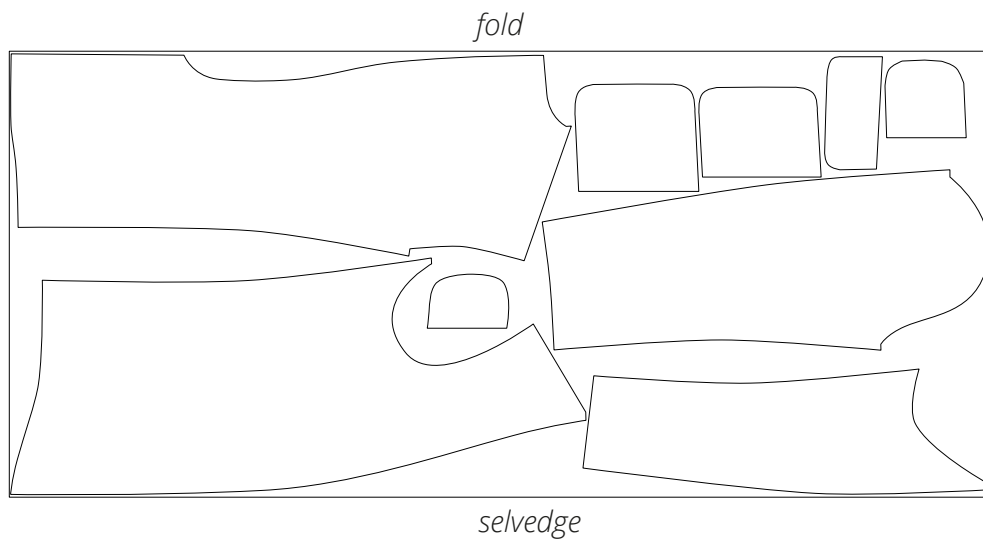
**Important!** Cut the collar stand pieces on a single layer out of leftover fabric. Cut one each of the chest pocket welt and chest pocket facing pieces.

Main fabric, 140 cm (55") wide, with a directional print/nap,  
cut on fold, for size 52 in all heights



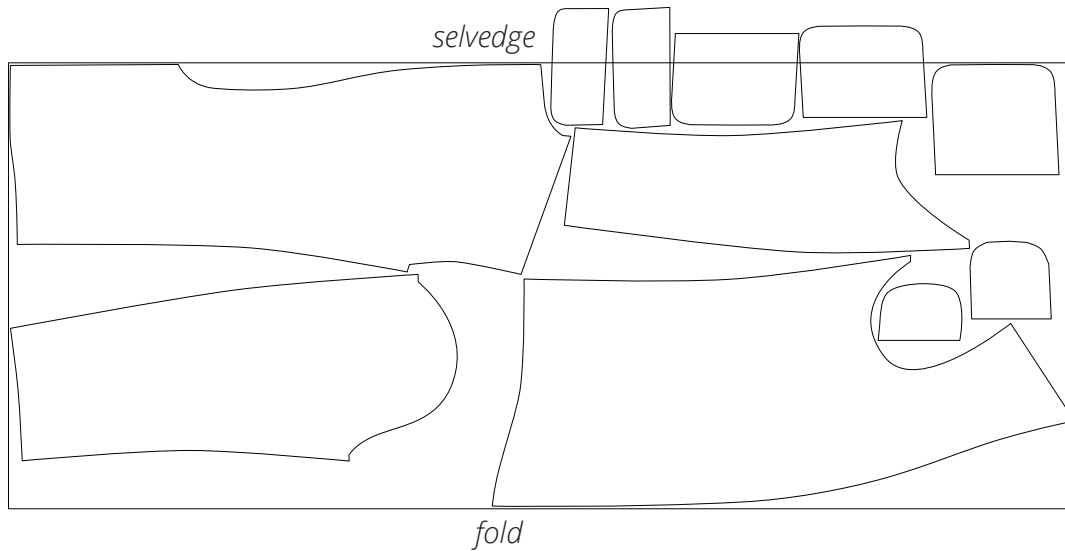
**Important!** Cut the collar stand pieces on a single layer out of leftover fabric. Cut one each of the chest pocket welt and chest pocket facing pieces.

Lining fabric, 140 cm (55") wide, with a directional print,  
cut on fold, for sizes 34–40 in all heights



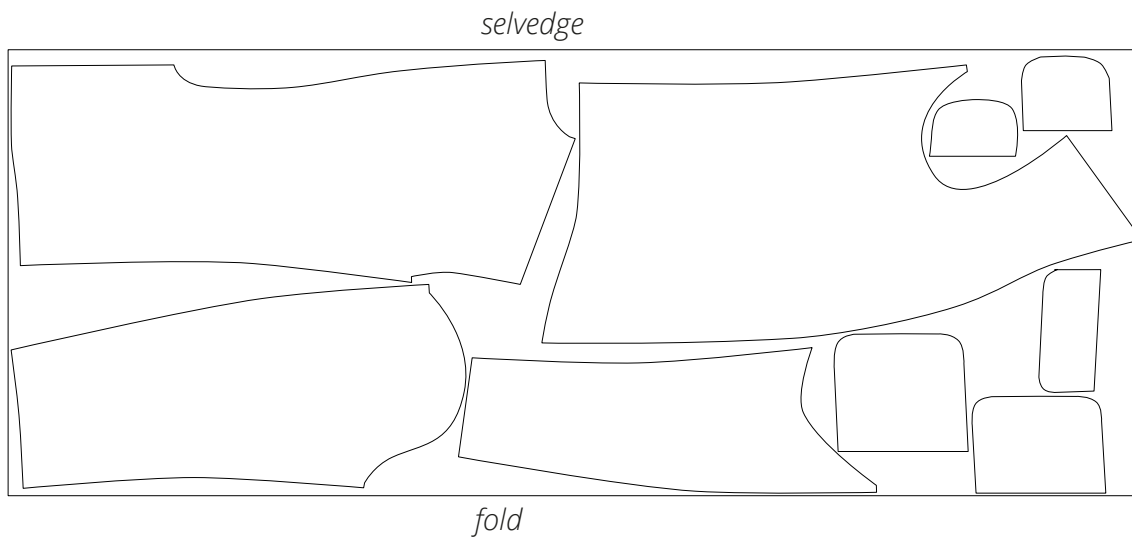
**Important!** Cut one each of the chest pocket top lining and chest pocket bottom lining pieces.

Lining fabric, 140 cm (55") wide, with a directional print,  
cut on fold, for sizes 42–44 in all heights



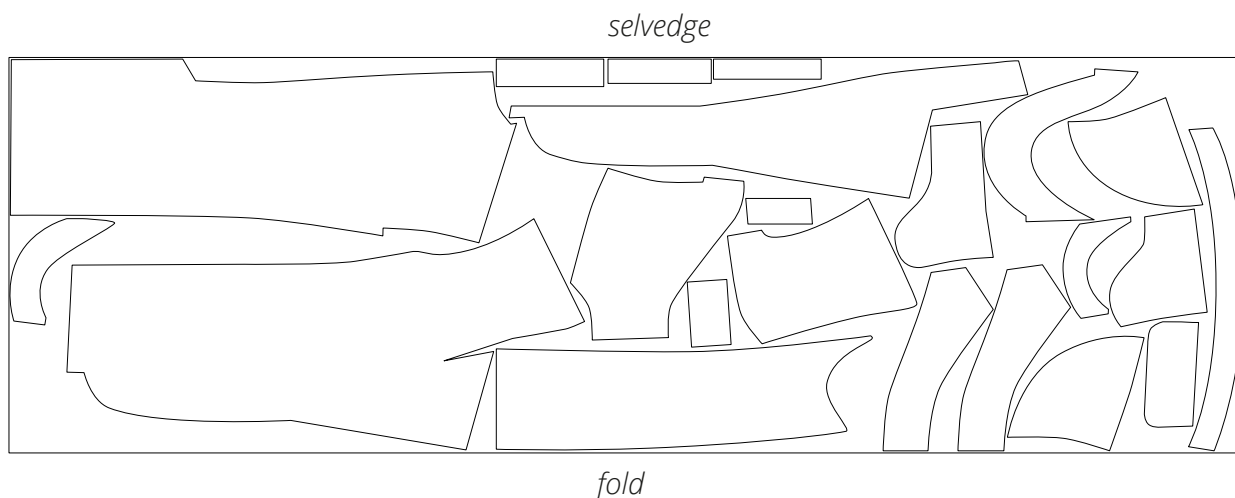
**Important!** Cut one each of the chest pocket top lining  
and chest pocket bottom lining pieces.

Lining fabric, 140 cm (55") wide, with a directional print,  
cut on fold, for sizes 46–52 in all heights



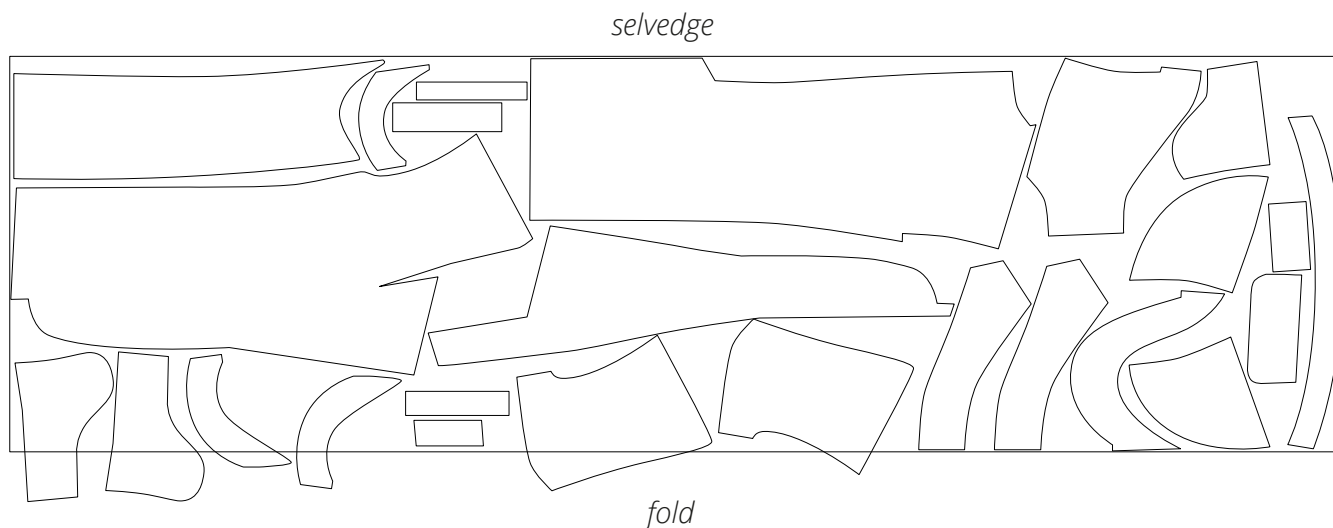
**Important!** Cut one each of the chest pocket top lining  
and chest pocket bottom lining pieces.

Interfacing, 140 cm (55") wide, cut on fold,  
for sizes 34–42 in all heights



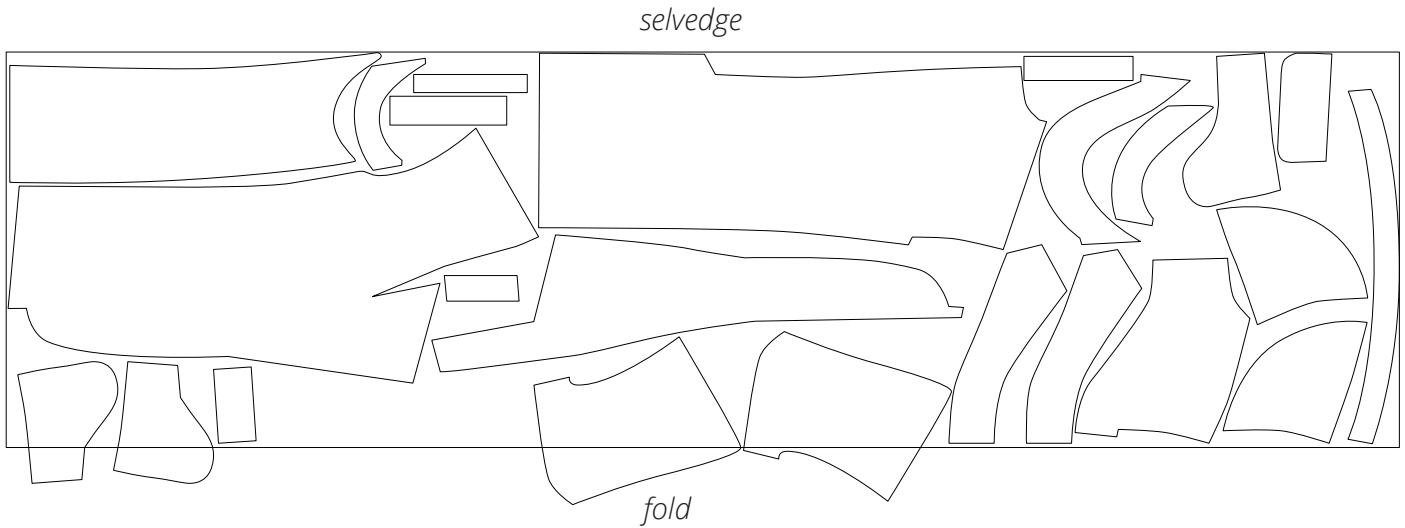
**Important!** Cut one each of the chest pocket welt  
and chest pocket facing pieces.

Interfacing, 140 cm (55") wide, cut on fold,  
for sizes 44–46 in all heights



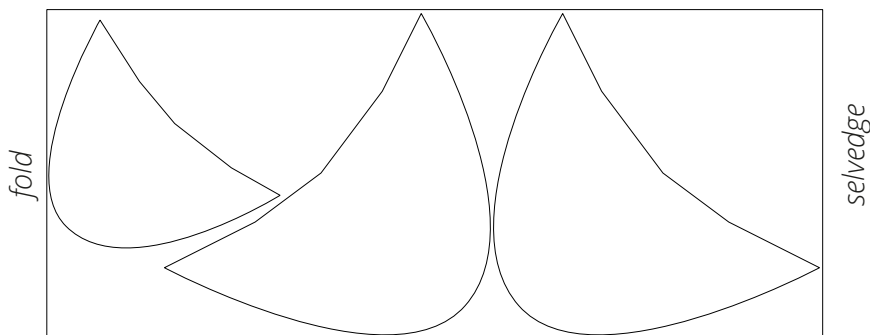
**Important!** Cut the top part of the front (2nd interfacing layer), sleeve cap  
section of the bottom sleeve (2nd interfacing layer), and bottom part of the top  
sleeve (2nd interfacing layer) on a single layer out of leftover fabric. Cut one  
each of the chest pocket welt and chest pocket facing pieces.

Interfacing, 140 cm (55") wide, cut on fold,  
for sizes 48–52 in all heights



**Important!** Cut the top part of the front (2nd interfacing layer) and bottom part of the bottom sleeve (2nd interfacing layer) on a single layer out of leftover fabric. Cut one each of the chest pocket welt and chest pocket facing pieces.

Additional fabric (buckram), 150 cm (59") wide,  
cut on fold, for all sizes in all heights



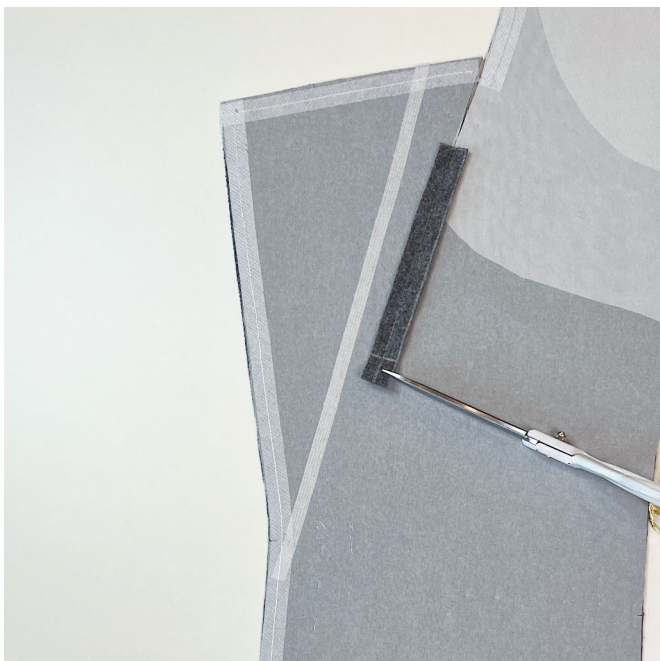
**READY? LET'S GET SEWING!**

---



Working on the right side of the front, machine-stitch along the marked line. Backstitch at the beginning and end of the seam.

Press the seam flat.



Trim the bottom part of the strip down to 1 cm (3/8").



Fold the strip in half lengthwise so that the center of the dart is positioned right on the edge. Press the strip. Match up the dart legs on the wrong side of the front piece.

Place the second fabric strip on the wrong side of the front piece, so that it's centered over the dart line. The second strip should extend beyond the tip of the dart by 2 cm (3/4") at the bottom. Pin.