

FROM THE FOUNDER OF THE #VIKISEWS BRAND



Back in 2016, when I was working on my first set of sewing instructions, I was trying to write them in such a way that even a complete beginner could easily understand and use them to create their very first garment. These instructions laid the foundation for the Vikisews brand, its vision and its mission. I wanted to create modern patterns with the utmost detailed and clear instructions.

Now, with each new collection we are constantly improving our instructions, amending them and adding more relevant details. By the time the final product reaches you, our drafters, correctors, and editors would have spent weeks perfecting every word and every photograph. If you compile a few of our instructions together, you will get a sewing manual that will assist you in sewing all kinds of garments at any difficulty level.

And I would be very happy if these instructions helped you to turn your hobby into a lifelong passion... Enjoy the process! Create your ultimate dream wardrobe! Wear your garments proudly for years to come!

If you have any questions, please contact us at info@vikisews.com — we are always there to help.



NERIAH PATTERN DESCRIPTION

Neriah is a semi-fitted dress with an accentuated waist and an A-line skirt. The dress has an underbust seam, a waist seam, and adjustable straps. The bodice is partially made of scalloped lace. The neckline is deep and shaped. The self-lined cups feature stitched pleats. Below the bust, the dress features lace partially lined with the main fabric. The dress closes with buttons and button loops. Neriah is above-ankle length.



IMPORTANT!

The contents of this pattern are copyright protected and belong exclusively to Vikisews. You may use Vikisews patterns for personal use. It is prohibited to share Vikisews patterns and instructions with third parties, as well as to publish patterns and instructions online for public access. **Non-compliance with the mentioned rules is a violation of the US copyright law and may result in civil liability and criminal prosecution.**

You may use Vikisews patterns for commercial use, to sew custom-made garments and/or create fashion collections, on the condition that the patterns are solely used in a manufacturing setting and are not further shared with individuals.

TOTAL EASE ALLOWANCE

	Bust ease	Waistline ease	Hipline ease
cm	0.1–4.6	5.5–10.2	4.1–13.2
inches	0–1 3/4	2 1/8–4	1 5/8–5 1/4

GARMENT LENGTH

Height, cm	Back length from waist down, cm	Height, ft	Back length from waist down, in
1 (154–160)	88.2–89.4	1 (5'1"–5'3")	34 3/4–35 1/4
2 (162–168)	91.2–92.4	2 (5'4"–5'6")	35 7/8–36 3/8
3 (170–176)	94.3–95.5	3 (5'7"–5'9")	37 1/8–37 5/8
4 (178–184)	97.3–98.5	4 (5'10"–6'1")	38 1/4–38 3/4

SUGGESTED FABRIC

To sew this dress, choose lightweight or medium-weight, soft, non-stretch or low-stretch, opaque or semi-sheer dress-weight fabrics made of natural fibers, artificial fibers, blends, or synthetics.

The following fabrics are recommended: satin, crepe de chine, natural silk, artificial silk.

Fabrics with a blended fiber content are preferable, as they are less prone to wrinkling, generally more resistant to wear and tear, and more durable.

As an additional fabric, we recommend using lace fabric or embroidered non-stretch mesh, either transparent or matching the main fabric.

Attention! We do not recommend stretchy knit fabrics.

The dress in the photo is made of artificial silk. The fabric is medium weight, soft, and non-stretch. The fiber content is 100% polyester. The fabric weight is 150 g/m².

The additional fabric is lace fabric. The fabric is soft and non-stretch. The fiber content is 100% polyester. The fabric weight is 90 g/m².

FABRIC AND NOTIONS REQUIREMENTS

1. Main fabric, 140 cm wide, with a directional print/nap, 100–150 g/m², in meters:

Height, cm	Size									
	34	36	38	40	42	44	46	48	50	52
1 (154–160)	1.45	1.45	1.55	1.65	1.65	1.8	1.9	2	2.05	2.05
2 (162–168)	1.5	1.5	1.65	1.7	1.75	1.9	2	2.1	2.1	2.15
3 (170–176)	1.5	1.55	1.7	1.8	1.8	2	2.1	2.2	2.2	2.25
4 (178–184)	1.55	1.65	1.75	1.85	1.9	2.05	2.15	2.25	2.25	2.3

Main fabric, 55" wide, with a directional print/nap, 100–150 g/m², in yards:

Height, ft	Size									
	34	36	38	40	42	44	46	48	50	52
1 (5'1"–5'3")	1 5/8	1 5/8	1 3/4	1 3/4	1 3/4	2	2 1/8	2 1/8	2 1/4	2 1/4
2 (5'4"–5'6")	1 5/8	1 5/8	1 3/4	1 7/8	1 7/8	2 1/8	2 1/8	2 1/4	2 1/4	2 3/8
3 (5'7"–5'9")	1 5/8	1 3/4	1 7/8	2	2	2 1/8	2 1/4	2 3/8	2 3/8	2 1/2
4 (5'10"–6'1")	1 3/4	1 3/4	1 7/8	2	2 1/8	2 1/4	2 3/8	2 1/2	2 1/2	2 1/2

2. Additional fabric (lace fabric), 25 cm wide, 90–120 g/m², in meters:

Height, cm	Size									
	34	36	38	40	42	44	46	48	50	52
1 (154–160)	1.1	1.15	1.2	1.2	1.25	1.3	1.35	1.4	1.4	1.45
2 (162–168)				1.25	1.3				1.45	1.5
3 (170–176)										
4 (178–184)										

Additional fabric (lace fabric), 10" wide, 90–120 g/m², in yards:

Height, ft	Size									
	34	36	38	40	42	44	46	48	50	52
1 (5'1"–5'3")	1 1/4	1 1/4	1 1/4	1 1/4	1 3/8	1 3/8	1 1/2	1 1/2	1 1/2	1 5/8
2 (5'4"–5'6")				1 3/8	1 3/8				1 5/8	1 5/8
3 (5'7"–5'9")										
4 (5'10"–6'1")										

3. Lightweight interfacing, knit or woven, 140 cm wide, 30 g/m², in meters:

Height, cm	Size			
	34	36	38–46	48–52
1 (154–160)	0.6	0.6	0.6	0.6
2 (162–168)	0.6	0.6	0.65	0.65
3 (170–176)	0.65	0.65	0.65	0.7
4 (178–184)	0.65	0.7	0.7	0.7

Lightweight interfacing, knit or woven, 55" wide, 30 g/m², in yards:

Height, ft	Size			
	34	36	38–46	48–52
1 (5'1"–5'3")	1/4	1/4	1/4	1/4
2 (5'4"–5'6")	1/4	1/4	1/4	1/4
3 (5'7"–5'9")	1/4	1/4	1/4	1/4
4 (5'10"–6'1")	1/4	1/4	1/4	1/4

IMPORTANT! When purchasing fabric, please account for shrinkage and buy 5% more than required.

4. Eighteen buttons, 0.7–1 cm (1/4–3/8") in diameter
5. Two strap rings, 1 cm (3/8") in diameter
6. Two strap sliders, 1 cm (3/8") in diameter
7. Matching thread — 5 spools (1 spool for the sewing machine + 4 spools for the overlocker)

TOOLS AND EQUIPMENT

- sewing machine for construction
- overlocker for finishing raw edges. This may be replaced with a stretch overlock stitch or a zigzag stitch on the sewing machine (overlock or zigzag stitch width 2–3 mm, stitch length 2.5 mm)
- stitch-in-the-ditch foot for the sewing machine (optional)
- loop turner

PATTERN PIECES LIST

1. From main fabric:

- top side front bodice — cut 2
- top center front bodice — cut 2
- top side front bodice lining — cut 2
- top center front bodice lining — cut 2
- bottom front bodice — cut 2
- front skirt — cut 2
- back bodice — cut 1 on fold
- back skirt — cut 1 on fold
- front placket — cut 1
- strap + ring tab — cut 2
- rouleau strap for button loops — cut 1
- front edge binding — cut 4

***IMPORTANT!** Don't forget to transfer all pattern markings and notches onto the fabric.*

2. From additional fabric (lace fabric):

- top side front bodice lace — cut 2
- top center front bodice lace — cut 2
- bottom front bodice lace — cut 2
- front waist lace (template) — cut 2
- back bodice lace — cut 1 on fold

3. From interfacing:

- front placket — cut 1

4. Templates for truing and marking (do not cut):

- back bodice (template)
- top side front bodice (2 different templates)
- top center front bodice (2 different templates)

SEAM ALLOWANCES

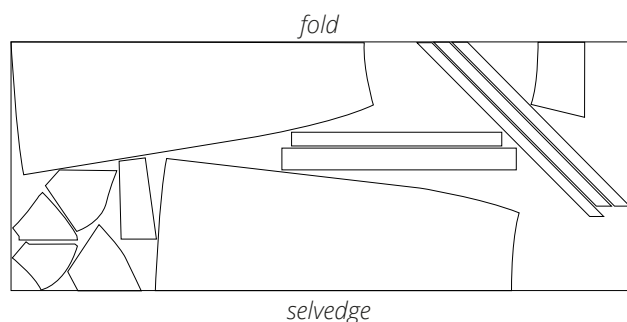
All pattern pieces include 1 cm (3/8") seam allowances.

Take this into account when laying out the pattern pieces on the fabric.

Attention! The lace pieces feature no seam allowances along the top edges.

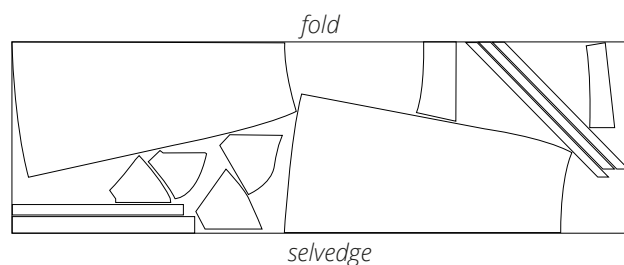
CUTTING LAYOUT

Main fabric, 140 cm (55") wide, with a directional print/nap, cut on fold, for sizes 34–38 in all heights



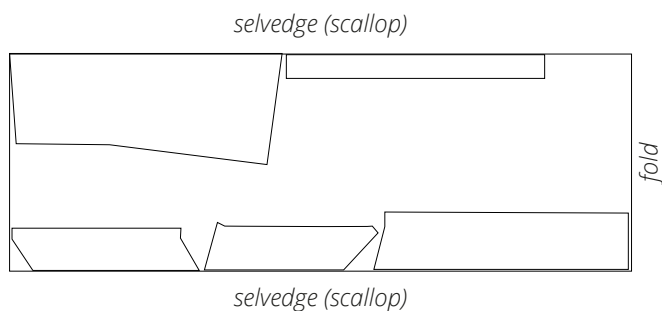
Important! Cut one each of the front placket and rouleau strap for button loops pieces.

Main fabric, 140 cm (55") wide, with a directional print/nap, cut on fold, for sizes 40–52 in all heights

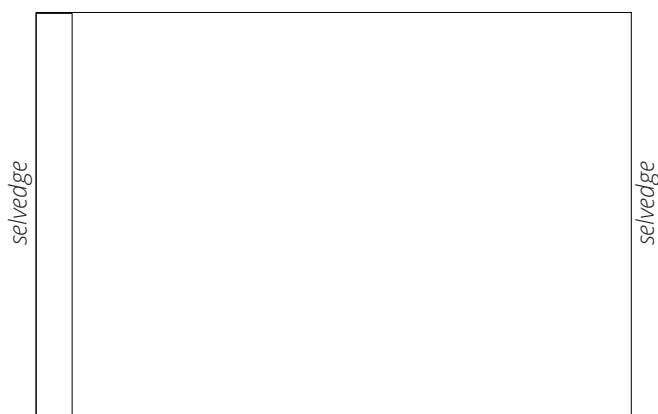


Important! Cut one each of the front placket and rouleau strap for button loops pieces.

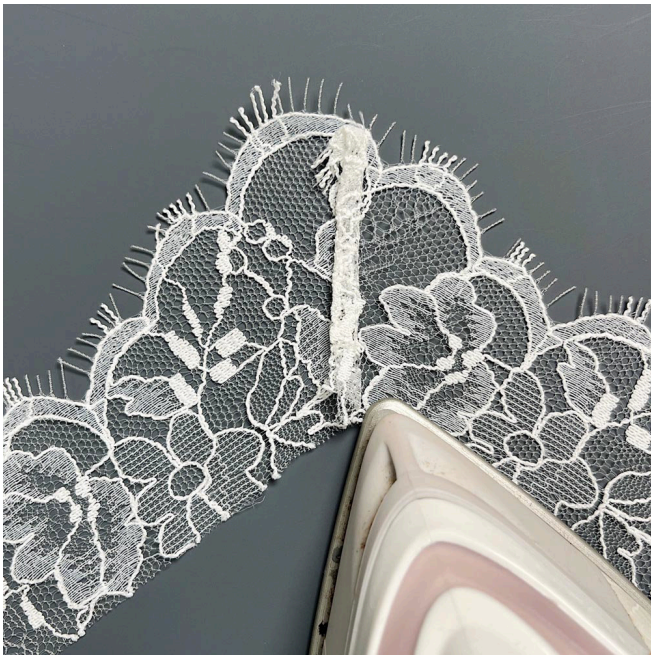
Additional fabric (lace fabric), 25 cm (10") wide, cut on fold, for all sizes in all heights



Interfacing, 140 cm (55") wide, cut on a single layer, for all sizes in all heights



READY? LET'S GET SEWING!



Press the seam allowances towards the top center front bodice lace piece.



Place the top center front bodice lace piece right sides together with the top center front bodice piece. Align the edges and pin. Machine-stitch between the center edge and the princess seam, backstitching at the beginning and end of the seam.



Place the top side front bodice lace piece right sides together with the top side front bodice piece. Align the edges and pin. Machine-stitch between the side edge and the princess seam, backstitching at the beginning and end of the seam.