

FROM THE FOUNDER OF THE #VIKISEWS BRAND

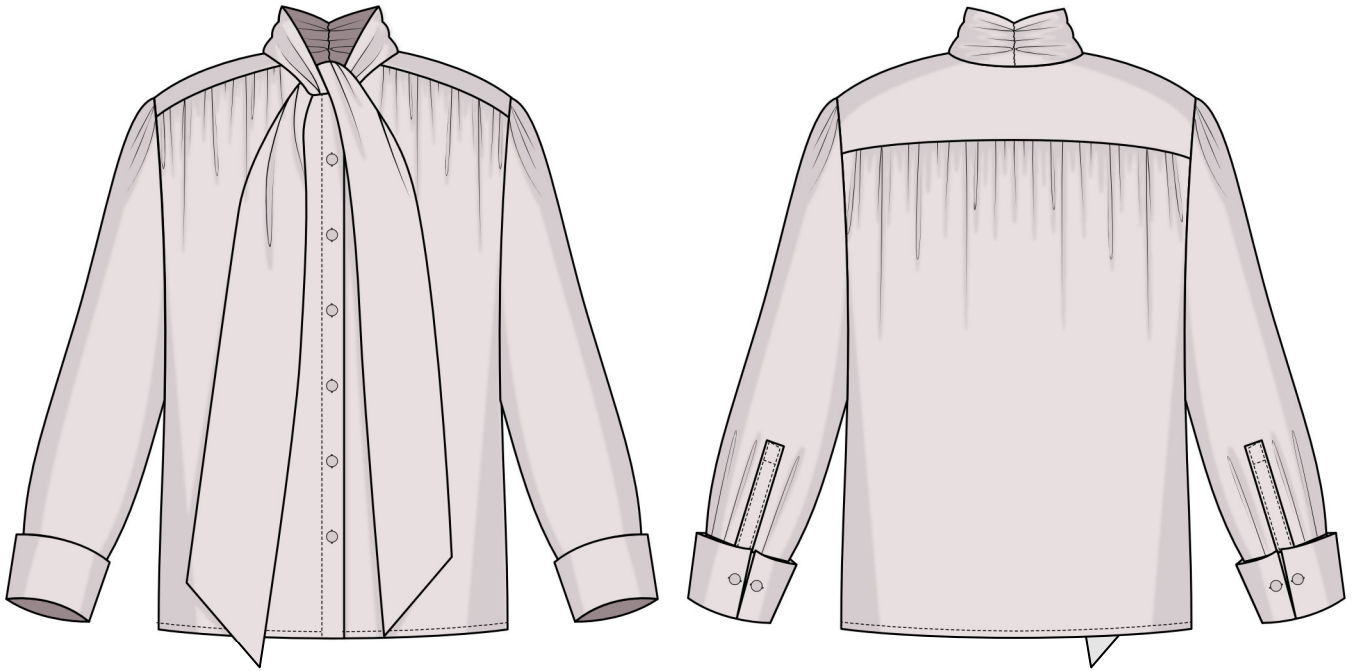


Back in 2016, when I was working on my first set of sewing instructions, I was trying to write them in such a way that even a complete beginner could easily understand and use them to create their very first garment. These instructions laid the foundation for the Vikisews brand, its vision and its mission. I wanted to create modern patterns with the utmost detailed and clear instructions.

Now, with each new collection we are constantly improving our instructions, amending them and adding more relevant details. By the time the final product reaches you, our drafters, correctors, and editors would have spent weeks perfecting every word and every photograph. If you compile a few of our instructions together, you will get a sewing manual that will assist you in sewing all kinds of garments at any difficulty level.

And I would be very happy if these instructions helped you to turn your hobby into a lifelong passion... Enjoy the process! Create your ultimate dream wardrobe! Wear your garments proudly for years to come!

If you have any questions, please contact us at info@vikisews.com — we are always there to help.



MAREN PATTERN DESCRIPTION

Maren is a semi-fitted blouse with a straight cut. The front and back are gathered at the top and feature an applied yoke. The blouse closes with a center front button placket. The stand collar is gathered along the center back seam and transitions into a tie. The long set-in sleeves are gathered along the sleeve cap and feature pleats at the bottom. The sleeve slit is finished with a placket. The sleeves are finished with turn-back cuffs that are fastened with cufflinks. Maren is below-hip length.



IMPORTANT!

The contents of this pattern are copyright protected and belong exclusively to Vikisews. You may use Vikisews patterns for personal use. It is prohibited to share Vikisews patterns and instructions with third parties, as well as to publish patterns and instructions online for public access. **Non-compliance with the mentioned rules is a violation of the US copyright law and may result in civil liability and criminal prosecution.**

You may use Vikisews patterns for commercial use, to sew custom-made garments and/or create fashion collections, on the condition that the patterns are solely used in a manufacturing setting and are not further shared with individuals.

TOTAL EASE ALLOWANCE

	Bust ease	Waistline ease	Hipline ease	Upper arm ease
cm	86.6–79	105.6–99.1	81.5–73.3	20.2–16.3
inches	34 1/8–31 1/8	41 5/8–39	32 1/8–28 7/8	8–6 3/8

GARMENT LENGTH, SLEEVE LENGTH

Height, cm	Back length, cm	Sleeve length including cuff, cm
1 (154–160)	64	62.3–62.2
2 (162–168)	67	64.3–64.2
3 (170–176)	70	66.3–66.2
4 (178–184)	73	68.3–68.2

Height, ft	Back length, in	Sleeve length including cuff, in
1 (5'1"–5'3")	25 1/4	24 1/2
2 (5'4"–5'6")	26 3/8	25 3/8–25 1/4
3 (5'7"–5'9")	27 1/2	26 1/8
4 (5'10"–6'1")	28 3/4	26 7/8

SUGGESTED FABRIC

To sew this blouse, choose blouse and dress-weight fabrics with the following properties:

- lightweight, soft, non-stretch or low-stretch, sheer, semi-sheer, or opaque
- the fiber content can include natural fibers (silk, cotton), artificial fibers (viscose), blends (cotton + silk, cotton + viscose, silk + viscose, etc.), and synthetics (polyester, polyester + elastane)
- the following fabrics are recommended: dress-weight viscose, chiffon, crepe de chine, natural or synthetic lightweight silk

Attention! We do not recommend stretchy knit fabrics or structured fabrics (sateen, organza).

The blouse in the photo is made of crinkle chiffon. The fabric is lightweight, sheer, soft, and non-stretch. The fiber content is 100% silk. The fabric weight is 120 g/m².

FABRIC AND NOTIONS REQUIREMENTS

1. Main fabric, 140 cm wide, 90–120 g/m², with a directional print/nap, in meters:

Height, cm	Size						
	34	36–40	42	44	46–48	50	52
1 (154–160)	2.05	2.05	2.1	2.1	2.1	2.15	2.3
2 (162–168)	2.05	2.1	2.1	2.1	2.15	2.2	2.35
3 (170–176)	2.1	2.1	2.15	2.15	2.2	2.25	2.4
4 (178–184)	2.15	2.15	2.15	2.2	2.25	2.4	2.45

Main fabric, 55" wide, 90–120 g/m², with a directional print/nap, in yards:

Height, ft	Size				
	34–40	42–44	46–48	50	52
1 (5'1"–5'3")	2 1/4	2 1/4	2 1/4	2 3/8	2 1/2
2 (5'4"–5'6")	2 1/4	2 1/4	2 3/8	2 3/8	2 5/8
3 (5'7"–5'9")	2 1/4	2 3/8	2 3/8	2 1/2	2 5/8
4 (5'10"–6'1")	2 3/8	2 3/8	2 1/2	2 5/8	2 5/8

2. Lightweight knit or woven interfacing, 140 cm wide, 40 g/m², in meters:

Height, cm	Meters
1 (154–160)	0.7
2 (162–168)	0.7
3 (170–176)	0.75
4 (178–184)	0.8

Lightweight knit or woven interfacing, 55" wide, 40 g/m², in yards:

Height, ft	Yards
1 (5'1"–5'3")	3/4
2 (5'4"–5'6")	3/4
3 (5'7"–5'9")	7/8
4 (5'10"–6'1")	7/8

IMPORTANT! When purchasing fabric, please account for shrinkage and buy 5% more than required.

3. Six buttons, 1–1.2 cm (3/8–1/2") in diameter

4. One pair of cufflinks or four shank buttons

5. Matching thread — 5 spools (1 spool for the sewing machine + 4 spools for the overlocker)

TOOLS AND EQUIPMENT

- sewing machine for construction
- overlocker for finishing raw edges. This may be replaced with a stretch overlock stitch or a zigzag stitch on the sewing machine (overlock or zigzag stitch width 2–3 mm, stitch length 2.5 mm)
- buttonhole foot for the sewing machine
- stitch-in-the-ditch foot for the sewing machine (optional)

PATTERN PIECES LIST

1. From main fabric:

- front — cut 2
- back — cut 1
- yoke — cut 2
- sleeve — cut 2
- tie stand collar — cut 2
- cuff — cut 2
- sleeve placket — cut 2

2. From interfacing:

- cuff — cut 2
- sleeve placket — cut 2

IMPORTANT! Don't forget to transfer all pattern markings and notches onto the fabric.

Additionally, cut two interfacing strips, 4 cm (1 5/8") wide and as long as the interfaced area, to reinforce the grown-on placket on the front piece. The interfacing strips should be cut on the straight grain (parallel to the selvedge).

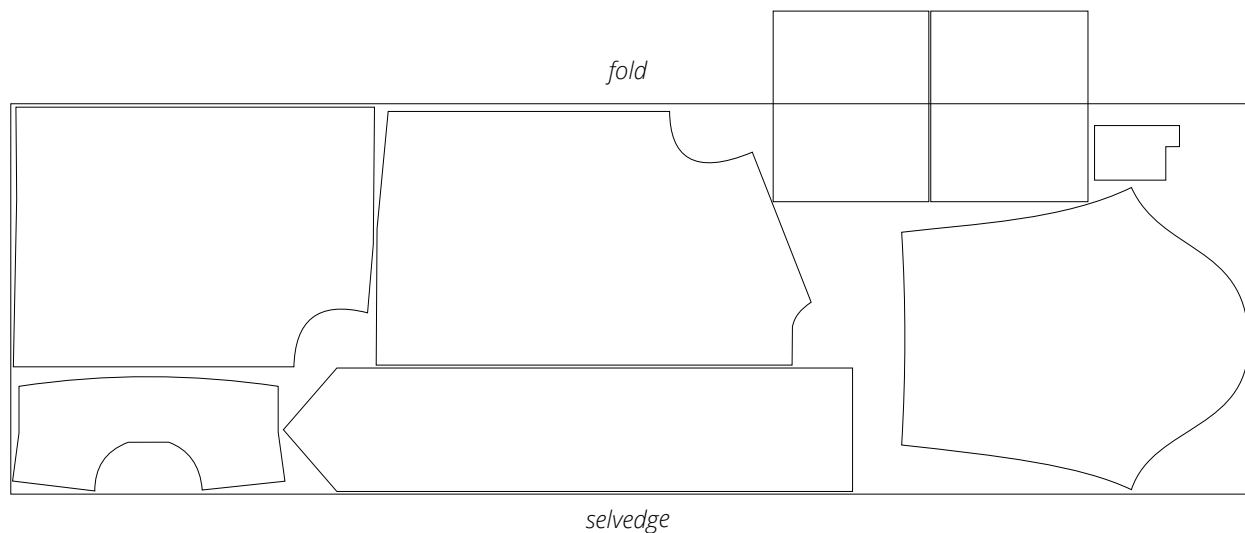
SEAM ALLOWANCES

All pattern pieces include 1 cm (3/8") seam allowances.

Take this into account when laying out pattern pieces on the fabric.

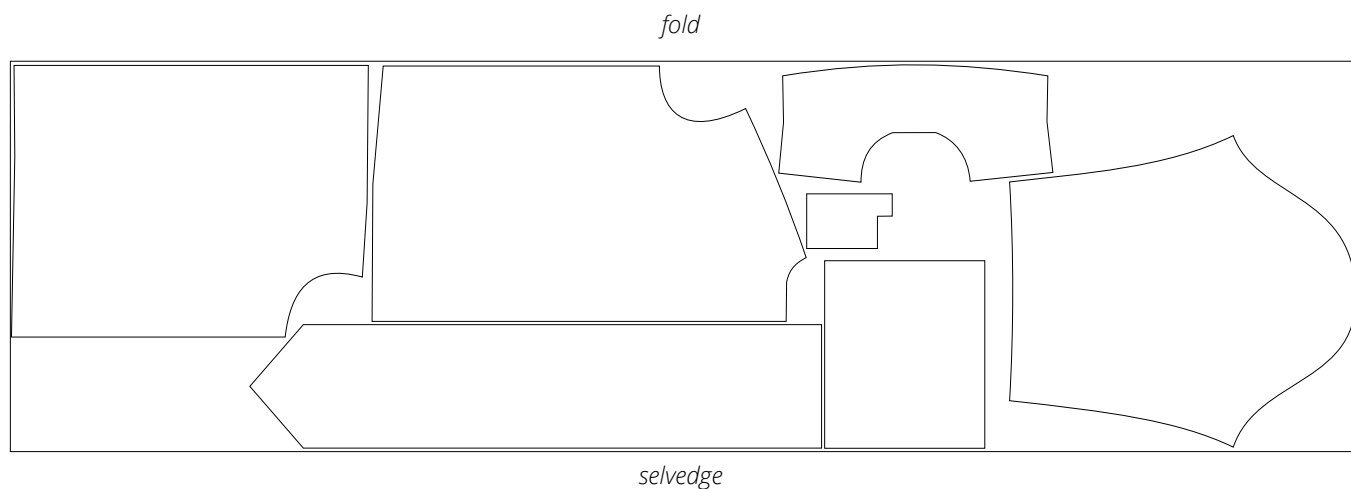
CUTTING LAYOUT

Main fabric, 140 cm (55") wide, with a non-directional print/no nap, cut on fold, for sizes 34–48 in all heights and size 50 in heights 1–3

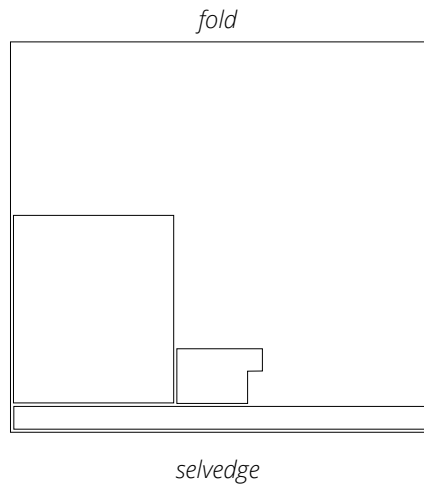


Important! Cut the cuff pieces on a single layer out of the leftover fabric.

Main fabric, 140 cm (55") wide, with a non-directional print/no nap, cut on fold, for size 50 in height 4 and size 52 in all heights



Interfacing, 140 cm (55") wide, cut on fold,
for all sizes in all heights



READY? LET'S GET SEWING!



Trim the yoke seam allowances down to 5–7 mm (1/4").



Turn the top yoke to the right side and press the seam allowances towards the yoke. Then turn the bottom yoke over the seam allowances and press.

Important! Do not go over the gathers on the back piece when pressing.



If the gathering stitches are visible from the right side of the back piece, remove them using a seam ripper.