

FROM THE FOUNDER OF THE #VIKISEWS BRAND

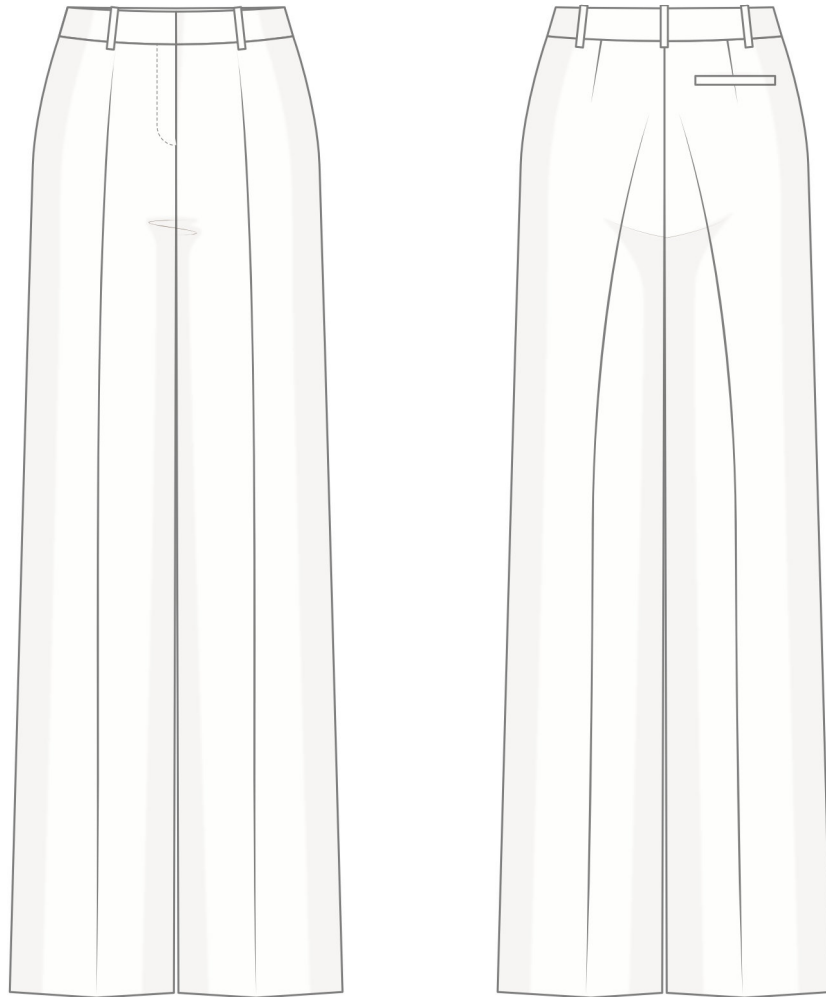


Back in 2016, when I was working on my first set of sewing instructions, I was trying to write them in such a way that even a complete beginner could easily understand and use them to create their very first garment. These instructions laid the foundation for the Vikisews brand, its vision and its mission. I wanted to create modern patterns with the utmost detailed and clear instructions.

Now, with each new collection we are constantly improving our instructions, amending them and adding more relevant details. By the time the final product reaches you, our drafters, correctors, and editors would have spent weeks perfecting every word and every photograph. If you compile a few of our instructions together, you will get a sewing manual that will assist you in sewing all kinds of garments at any difficulty level.

And I would be very happy if these instructions helped you to turn your hobby into a lifelong passion... Enjoy the process! Create your ultimate dream wardrobe! Wear your garments proudly for years to come!

If you have any questions, please contact us at info@vikisews.com — we are always there to help.



FLANNERY PATTERN DESCRIPTION

Flannery is a pair of semi-fitted, straight-leg trousers with pressed creases on the front and back. The back is shaped with waist darts and features a single welt pocket on the right side. The waistband sits 6 cm (2 3/8") below the natural waistline, fastens with a hook-and-bar closure, and has topstitched belt loops. The trousers have a fly front zipper closure and are floor-length.



IMPORTANT!

The contents of this pattern are copyright protected and belong exclusively to Vikisews. You may use Vikisews patterns for personal use. It is prohibited to share Vikisews patterns and instructions with third parties, as well as to publish patterns and instructions online for public access. **Non-compliance with the mentioned rules is a violation of the US copyright law and may result in civil liability and criminal prosecution.**

You may use Vikisews patterns for commercial use, to sew custom-made garments and/or create fashion collections, on the condition that the patterns are solely used in a manufacturing setting and are not further shared with individuals.

TOTAL EASE ALLOWANCE

	Waistline ease	Hipline ease
cm	6.3–4.3	0.8–2.6
inches	2 1/2–1 3/4	3/8–1

GARMENT LENGTH

Height, cm	Side seam length including waistband, cm	Finished hem width, cm
1 (154–160)	103.8–107.2	27.7–36.7
2 (162–168)	107.8–111.2	27.7–36.7
3 (170–176)	111.8–115.2	27.7–36.7
4 (178–184)	115.8–119.2	27.7–36.7

Height, ft	Side seam length including waistband, in	Finished hem width, in
1 (5'1"–5'3")	40 7/8–42 1/4	10 7/8–14 1/2
2 (5'4"–5'6")	42 1/2–43 3/4	10 7/8–14 1/2
3 (5'7"–5'9")	44–45 3/8	10 7/8–14 1/2
4 (5'10"–6'1")	45 5/8–46 7/8	10 7/8–14 1/2

SUGGESTED FABRIC

To sew these trousers, choose suiting fabrics with the following properties:

- medium-weight, soft, non-stretch or low-stretch, opaque
- the fiber content can include natural fibers (wool, cotton, silk), blends (wool + polyester, cotton + polyester, etc.), and synthetics (polyester)
- the following fabrics are recommended: wool suiting, crepe, gabardine.

For the pocket lining, choose lining fabrics or pocketing made of natural fibers (silk), artificial fibers (viscose), synthetics (polyester), or blends (viscose + polyester, silk + viscose, viscose + elastane).

The trousers in the photos are made of wool suiting. The fabric is medium weight, soft, and without stretch. The fiber content is 70% wool and 30% polyester. The fabric weight is 250 g/m².

The pocket lining is a blend of 55% viscose and 45% polyester. The lining fabric weight is 90 g/m².

FABRIC AND NOTIONS REQUIREMENTS

1. Main fabric, 140 cm wide, with a directional print/nap, 200–250 g/m², in meters:

Height, cm	Size					
	34	36–38	40	42	44	46–52
1 (154–160)	1.25	1.3	1.3	1.95	2	2.25
2 (162–168)	1.3	1.3	1.35	2	2.1	2.3
3 (170–176)	1.35	1.35	1.4	2.1	2.15	2.4
4 (178–184)	1.4	1.4	1.45	2.15	2.25	2.45

Main fabric, 55" wide, with a directional print/nap, 200–250 g/m², in yards:

Height, ft	Size				
	34–38	40	42	44	44–52
1 (5'1"–5'3")	1 3/8	1 3/8	2 1/8	2 1/8	2 1/2
2 (5'4"–5'6")	1 3/8	1 1/2	2 1/8	2 1/4	2 1/2
3 (5'7"–5'9")	1 1/2	1 1/2	2 1/4	2 3/8	2 5/8
4 (5'10"–6'1")	1 1/2	1 5/8	2 3/8	2 1/2	2 5/8

2. Lining fabric, 140 cm wide, 50–100 g/m², in meters:

Height, cm	Size	
	34–36	38–52
1 (154–160)	0.15	0.2
2 (162–168)	0.15	0.2
3 (170–176)	0.15	0.2
4 (178–184)	0.15	0.2

Lining fabric, 55" wide, 50–100 g/m², in yards:

Height, ft	Size	
	34–36	38–52
1 (5'1"–5'3")	1/8	1/4
2 (5'4"–5'6")	1/8	1/4
3 (5'7"–5'9")	1/8	1/4
4 (5'10"–6'1")	1/8	1/4

IMPORTANT! When purchasing fabric, please account for shrinkage and buy 5% more than required.

3. Lightweight interfacing, knit or woven, 40 g/m², 140 cm wide, in meters:

Height, cm	Size		
	34-38	40-48	50-52
1 (154-160)	0.2	0.25	0.25
2 (162-168)	0.2	0.25	0.25
3 (170-176)	0.2	0.25	0.3
4 (178-184)	0.2	0.25	0.3

Lightweight interfacing, knit or woven, 40 g/m², 55" wide, in yards:

Height, ft	Size	
	34-48	50-52
1 (5'1"-5'3")	1/4	1/4
2 (5'4"-5'6")	1/4	1/4
3 (5'7"-5'9")	1/4	3/8
4 (5'10"-6'1")	1/4	3/8

4. One trouser zipper, 20 cm (7 7/8") long, for all sizes and heights.

5. Two sets of pronged trouser hooks and bars, for all sizes and heights.

6. One button, 0.7-1 cm (1/4-3/8") in diameter.

7. Matching thread – 5 spools (1 spool for the sewing machine + 4 spools for the overlocker).

TOOLS AND EQUIPMENT

- sewing machine for construction
- overlocker for finishing raw edges. It can be replaced with a stretch overlock stitch or a zigzag stitch on the sewing machine (overlock or zigzag stitch width 2-3 mm, stitch length 2.5 mm)
- stitch-in-the-ditch foot for the sewing machine (optional)
- one-sided foot for the sewing machine
- loop turner.

PATTERN PIECES LIST

1. From main fabric:

- front leg – cut 2
- back leg – cut 2
- right front waistband – cut 2
- left front waistband – cut 2
- back waistband – cut 2
- fly shield – cut 1
- fly extension – cut 1
- welt – cut 1
- back pocket lining – cut 1
- belt loops – cut 1

2. From lining fabric:

- back pocket lining – cut 1
- button loop – cut 1

IMPORTANT! Don't forget to transfer all pattern markings and notches onto the fabric.

3. From interfacing:

- right front waistband – cut 2
- left front waistband – cut 2
- back waistband – cut 2
- fly shield – 1/2 width + 1 cm (3/8")
- fly extension – cut 1
- welt – cut 1

Additionally, cut two interfacing strips, 3 cm (1 1/8") wide, to reinforce the pocket opening area. To find the length of the strips, measure the marked interfacing area on the pattern. The interfacing strips should be cut on the straight grain (parallel to the selvedge).

SEAM ALLOWANCES

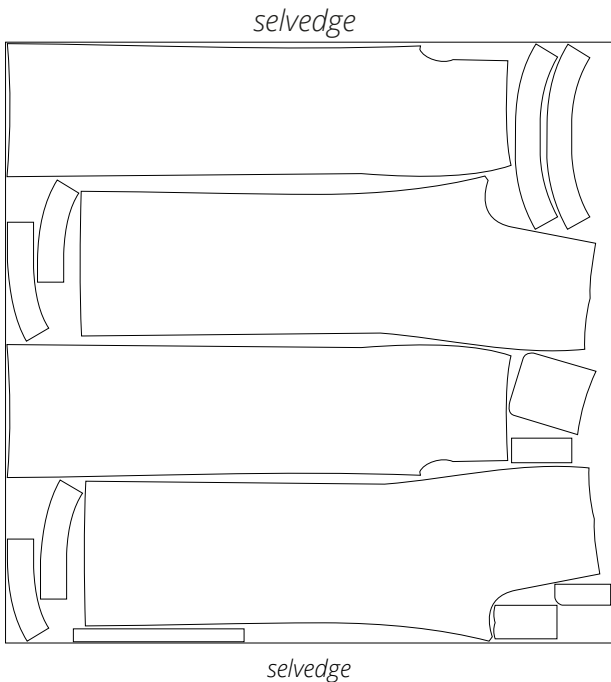
All pattern pieces include seam allowances as follows:

- garment hem allowance – 4 cm (1 5/8")
- pocket lining edges – 1.5 cm (5/8")
- all other edges – 1 cm (3/8").

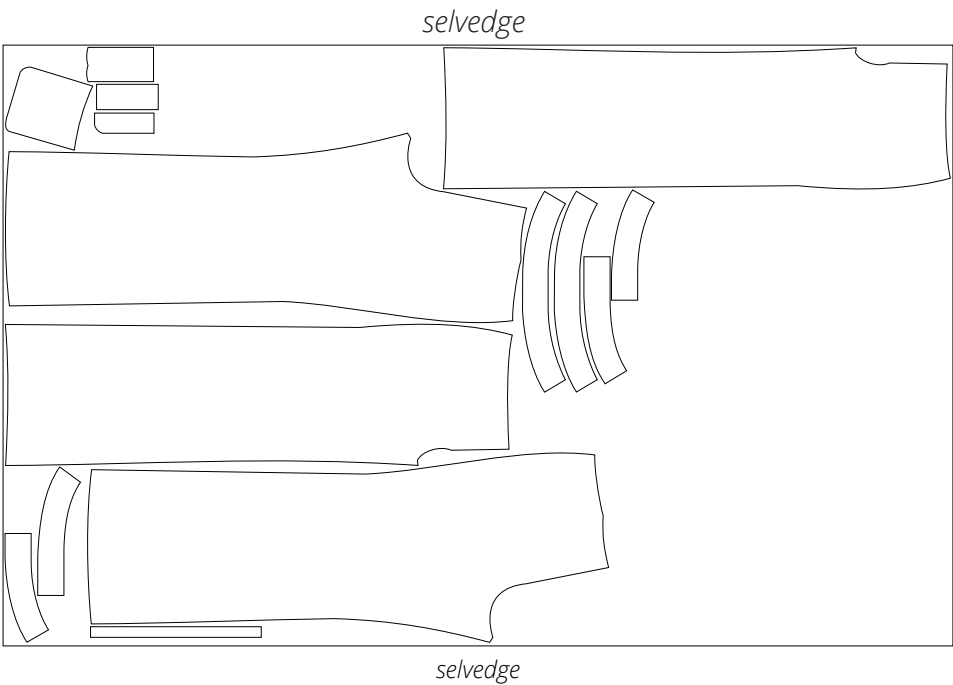
Take this into account when laying out pattern pieces on the fabric.

CUTTING LAYOUT

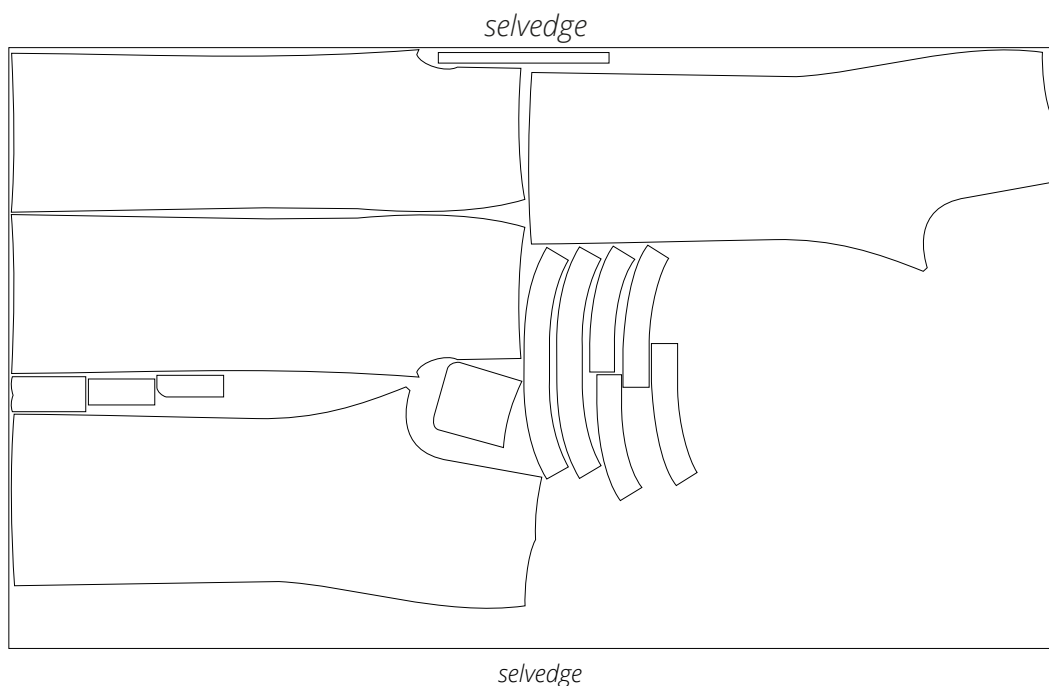
Main fabric, 140 cm (55") wide, with a directional print/nap, cut on a single layer, for sizes 34-40 in all heights



Main fabric, 140 cm (55") wide, with a directional print/nap, cut on a single layer, for sizes 42-44 in all heights



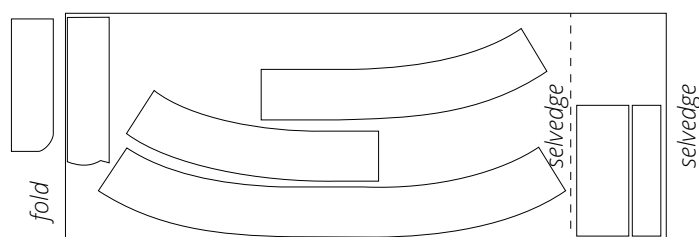
Main fabric, 140 cm (55") wide, with a directional print/nap, cut on a single layer, for sizes 46–52 in all heights



Lining fabric, 140 cm (55") wide, with a directional print, cut on a single layer, for all sizes in all heights



Interfacing, 140 cm (55") wide, cut with one offset fold and in one direction, for all sizes in all heights



Attention! Cut only one fly shield, back pocket interfacing, fly extension, and welt.

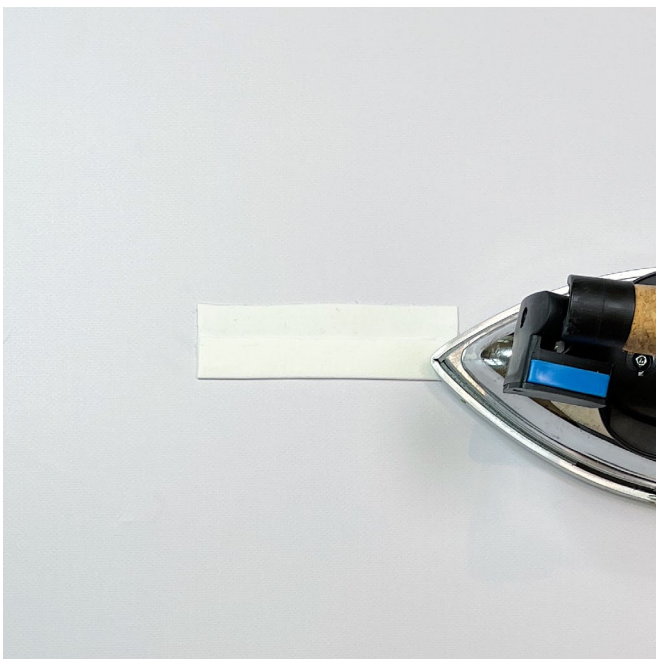
READY? LET'S GET SEWING!



Tie the thread tails into a knot at the dart point and hide them inside the dart bulk using a hand-sewing needle.



Press the dart flat.
Press the dart towards the crotch edge.



Fold the welt piece in half wrong sides together along the foldline and press it.