

FROM THE FOUNDER OF THE #VIKISEWS BRAND

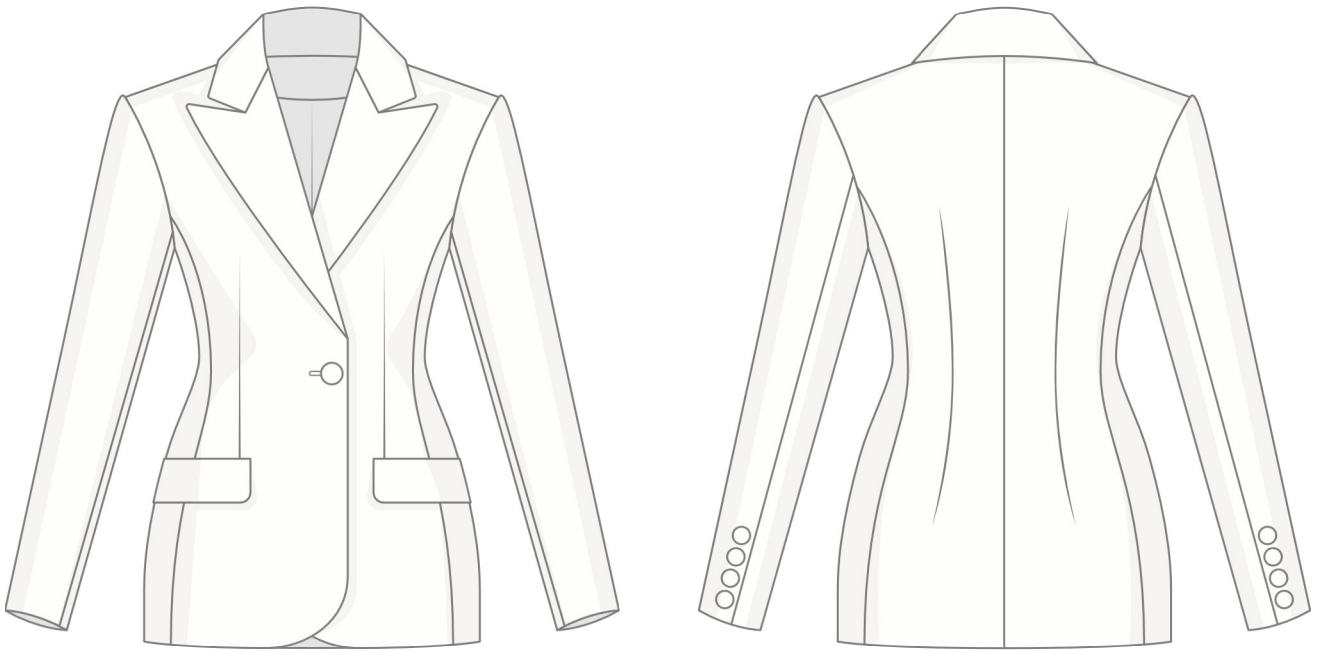


Back in 2016, when I was working on my first set of sewing instructions, I was trying to write them in such a way that even a complete beginner could easily understand and use them to create their very first garment. These instructions laid the foundation for the Vikisews brand, its vision and its mission. I wanted to create modern patterns with the utmost detailed and clear instructions.

Now, with each new collection we are constantly improving our instructions, amending them and adding more relevant details. By the time the final product reaches you, our drafters, correctors, and editors would have spent weeks perfecting every word and every photograph. If you compile a few of our instructions together, you will get a sewing manual that will assist you in sewing all kinds of garments at any difficulty level.

And I would be very happy if these instructions helped you to turn your hobby into a lifelong passion... Enjoy the process! Create your ultimate dream wardrobe! Wear your garments proudly for years to come!

If you have any questions, please contact us at info@vikisews.com — we are always there to help.



BELLEANN PATTERN DESCRIPTION

Belleann is a semi-fitted, fully lined blazer. There are side panels at the front and back. The back of the blazer is fitted with waist darts and a center seam. The shaping at the front is achieved with vertical bust darts that go down to welt pockets with flaps. The shoulder line is extended. The long, set-in, two-piece sleeves have a vent with sewn-on buttons in the elbow seam. The collar is turn-down and notched. The blazer closes with one button and buttonhole. Belleann is hip-length.



IMPORTANT!

The contents of this pattern are copyright protected and belong exclusively to Vikisews. You may use Vikisews patterns for personal use. It is prohibited to share Vikisews patterns and instructions with third parties, as well as to publish patterns and instructions online for public access. **Non-compliance with the mentioned rules is a violation of the US copyright law and may result in civil liability and criminal prosecution.**

You may use Vikisews patterns for commercial use, to sew custom-made garments and/or create fashion collections, on the condition that the patterns are solely used in a manufacturing setting and are not further shared with individuals.

TOTAL EASE ALLOWANCE

	Bust ease	Waistline ease	Hipline ease	Upper arm ease
cm	7.5–8	8.1	12.7–12.5	8.6–8.8
inches	3–3 1/8	3 1/4	5–4 7/8	3 3/8–3 1/2

GARMENT LENGTH, SLEEVE LENGTH

Height, cm	Back length, cm	Sleeve length, cm
1 (154–160)	67.4–69.2	63.9–64.1
2 (162–168)	70.4–72.2	65.9–66.1
3 (170–176)	73.4–75.2	67.9–68.1
4 (178–184)	76.4–78.2	69.9–70.1

Height, ft	Back length, in	Sleeve length, in
1 (5'1"–5'3")	26 1/2–27 1/4	25 1/8–25 1/4
2 (5'4"–5'6")	27 3/4–28 3/8	26
3 (5'7"–5'9")	28 7/8–29 5/8	26 3/4
4 (5'10"–6'1")	30 1/8–30 3/4	27 1/2–27 5/8

SUGGESTED FABRIC

To sew this blazer, choose suiting fabrics with the following properties:

- medium weight, structured, non-stretch or low-stretch
- the fiber content can include natural fibers (wool), artificial fibers (viscose), blends (wool + silk, wool + polyester, etc.), and synthetics (polyester).

The following fabrics are recommended: velvet suiting, wool suiting.

Attention! We do not recommend stretchy, soft, lightweight (dress-weight wool), and loosely woven suiting fabrics.

For the lining, choose lining fabrics made of artificial fibers (viscose), blends (viscose + elastane, viscose + polyester), or synthetics (polyester, polyester + elastane).

The blazer in the photo is made of velvet suiting with a cotton backing. The fabric is medium weight, structured, and non-stretch. The fiber content is 100% cotton. The fabric weight is 290 g/m². The lining is a blend of polyester (55%) and viscose (45%). The fabric weight is 130 g/m².

FABRIC AND NOTIONS REQUIREMENTS

1. Main fabric, 140 cm wide, 250–300 g/m², with a directional print/nap, in meters:

Height, cm	Size				
	34–36	38	40–44	46–50	52
1 (154–160)	1.75	1.8	2.1	2.25	2.25
2 (162–168)	1.8	1.9	2.2	2.35	2.35
3 (170–176)	1.85	1.95	2.3	2.4	2.45
4 (178–184)	1.9	1.95	2.35	2.5	2.5

Main fabric, 55" wide, 250–300 g/m², with a directional print/nap, in yards:

Height, ft	Size			
	34–36	38	40–44	46–52
1 (5'1"–5'3")	1 7/8	2	2 1/4	2 1/2
2 (5'4"–5'6")	2	2 1/8	2 3/8	2 5/8
3 (5'7"–5'9")	2	2 1/8	2 1/2	2 5/8
4 (5'10"–6'1")	2 1/8	2 1/8	2 5/8	2 3/4

2. Lining fabric, 140 cm wide, 130 g/m², in meters:

Height, cm	Size			
	34	36-48	50	52
1 (154-160)	1.35	1.4	1.5	1.55
2 (162-168)	1.4	1.45	1.55	1.6
3 (170-176)	1.45	1.5	1.6	1.65
4 (178-184)	1.5	1.55	1.65	1.7

Lining fabric, 55" wide, 130 g/m², in yards:

Height, ft	Size			
	34	36-48	50	52
1 (5'1"-5'3")	1 1/2	1 1/2	1 5/8	1 3/4
2 (5'4"-5'6")	1 1/2	1 5/8	1 3/4	1 3/4
3 (5'7"-5'9")	1 5/8	1 5/8	1 3/4	1 3/4
4 (5'10"-6'1")	1 5/8	1 3/4	1 3/4	1 7/8

IMPORTANT! When purchasing fabric, please account for shrinkage and buy 5% more than required.

3. Knit or woven lightweight interfacing, 140 cm wide, 40-50 g/m², in meters:

Height, cm	Size					
	34	36-38	40-42	44-46	48-50	52
1 (154-160)	1.6	1.65	1.75	1.9	2	2.15
2 (162-168)	1.65	1.7	1.8	1.95	2.05	2.25
3 (170-176)	1.7	1.75	1.85	1.95	2.1	2.3
4 (178-184)	1.75	1.75	1.9	2	2.15	2.4

Knit or woven lightweight interfacing, 55" wide, 40-50 g/m², in yards:

Height, ft	Size					
	34	36-38	40-42	44-46	48-50	52
1 (5'1"-5'3")	1 3/4	1 3/4	1 7/8	2 1/8	2 1/8	2 3/8
2 (5'4"-5'6")	1 3/4	1 7/8	2	2 1/8	2 1/4	2 1/2
3 (5'7"-5'9")	1 7/8	1 7/8	2	2 1/8	2 1/4	2 1/2
4 (5'10"-6'1")	1 7/8	1 7/8	2 1/8	2 1/8	2 3/8	2 5/8

4. Stitched bias-cut fusible stay tape with stitch reinforcement, 1.5 cm (5/8") wide — 5 m (5 1/2 yd)
5. Stitched straight-grain fusible stay tape, 1 cm (3/8") wide — 1 m (1 1/8 yd)
6. One button, 2.2–2.5 cm (7/8–1") in diameter
7. Eight buttons, 1.5 cm (5/8") in diameter
8. One pair of shoulder pads, 2 cm (3/4") tall
9. One pair of sleeve heads
10. Matching thread for the main fabric — 1 spool for the sewing machine
11. Matching thread for the lining fabric — 1 spool for the sewing machine

TOOLS AND EQUIPMENT

- sewing machine for construction
- buttonhole foot for the sewing machine

PATTERN PIECES LIST

1. From main fabric:

- front — cut 2
- side front — cut 2
- back — cut 2
- side back — cut 2
- top sleeve — cut 2
- bottom sleeve — cut 2
- upper collar — cut 1 on fold
- undercollar — cut 2
- collar stand — cut 2
- back neck facing — cut 1 on fold
- front facing — cut 2
- top flap — cut 2
- welt — cut 2
- pocket facing — cut 2

2. From lining fabric:

- front lining — cut 2
- back lining — cut 2
- top sleeve lining — cut 2
- bottom sleeve lining — cut 2
- pocket top lining — cut 2
- pocket bottom lining — cut 2
- bottom flap — cut 2

***IMPORTANT!** Don't forget to transfer all pattern markings and notches onto the fabric.*

3. From interfacing:

- front — cut 2
- side front — cut 2
- back — cut 2
- side back — cut 2
- upper collar — cut 1 on fold
- undercollar — cut 2
- collar stand — cut 2
- back neck facing — cut 1 on fold
- front facing — cut 2
- top flap — cut 2
- welt — cut 2
- pocket facing — cut 2

Partially interface the following:

- top sleeve — 2 pieces (interface the sleeve cap and the bottom part of the sleeve outlined on the pattern)
- bottom sleeve — 2 pieces (interface the sleeve cap and the bottom part of the sleeve outlined on the pattern)

Additionally, interface the following sections outlined on the pattern:

- front (2nd interfacing layer) — 2 pieces
- side front (2nd interfacing layer) — 2 pieces
- back (2nd interfacing layer) — 2 pieces
- side back (2nd interfacing layer) — 2 pieces

Also, cut two interfacing strips to reinforce the pocket opening seam allowances. The interfacing strips should be cut on the straight grain (parallel to the selvedge).

SEAM ALLOWANCES

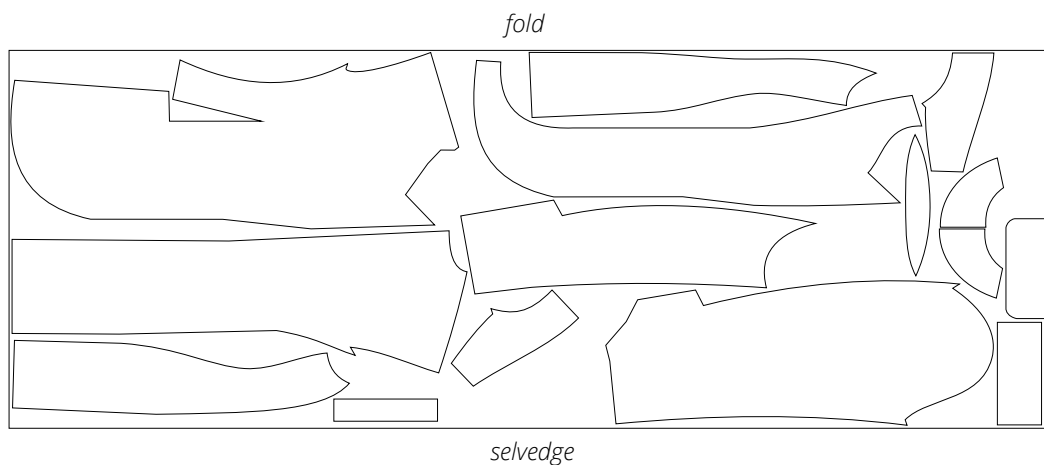
All pattern pieces include seam allowances as follows:

- garment hem allowance — 4 cm (1 5/8")
- sleeve hem allowance — 4 cm (1 5/8")
- pocket lining curved edges — 1.5 cm (5/8")
- all other edges — 1 cm (3/8")

Take this into account when laying out pattern pieces on the fabric.

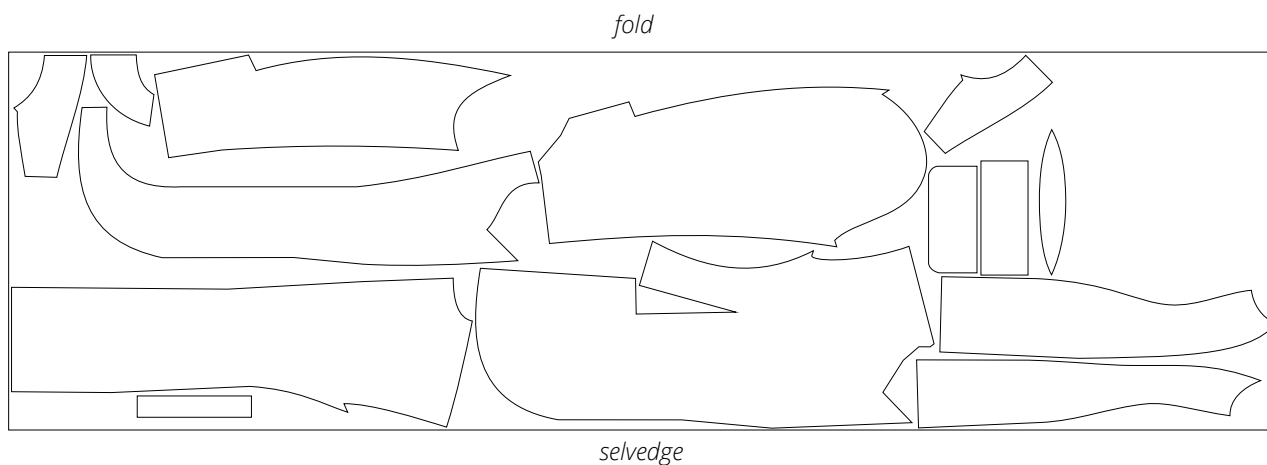
CUTTING LAYOUT

Main fabric, 140 cm (55") wide, with a directional print/nap,
cut on fold, for sizes 34–38 in all heights

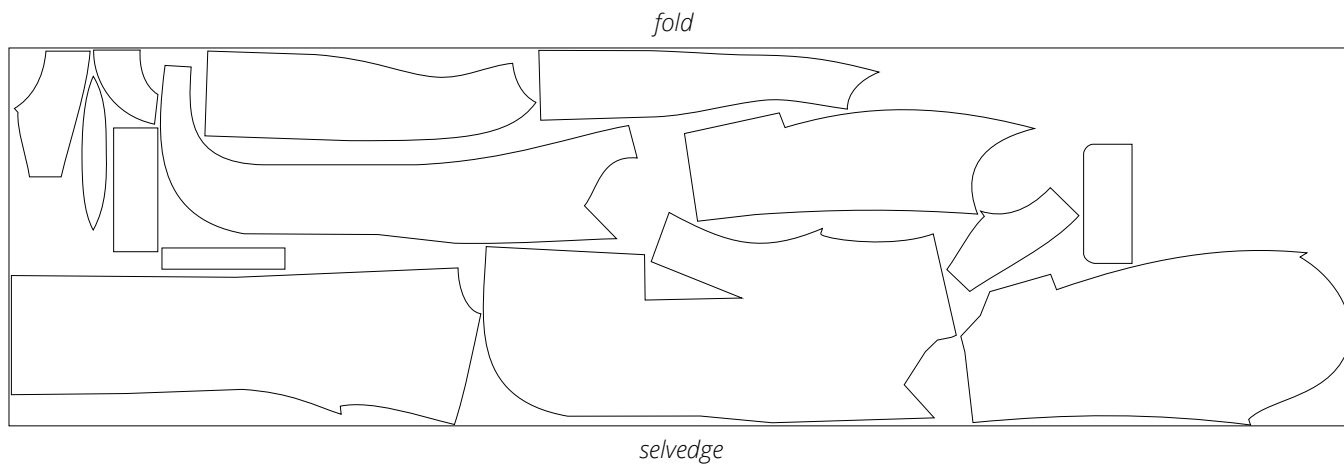


Attention! Cut one back neck facing only.

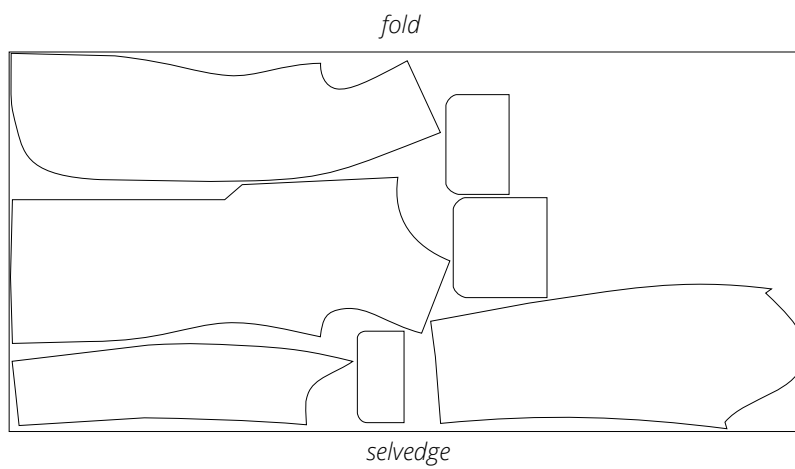
Main fabric, 140 cm (55") wide, with a directional print/nap,
cut on fold, for sizes 40–44 in all heights



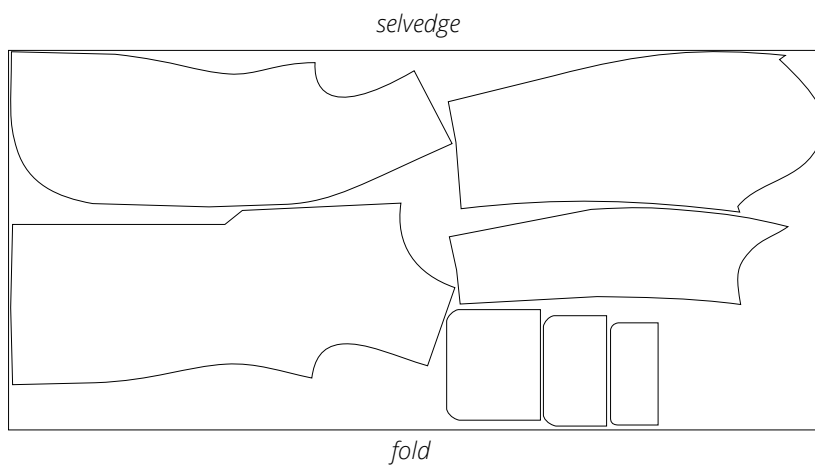
Main fabric, 140 cm (55") wide, with a directional print/nap,
cut on fold, for sizes 46-52 in all heights



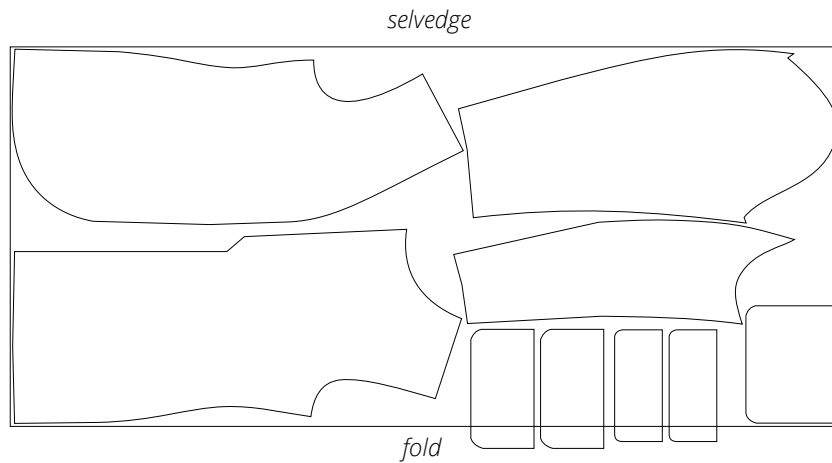
Lining fabric, 140 cm (55") wide, with a directional print,
cut on fold, for size 34 in all heights



Lining fabric, 140 cm (55") wide, with a directional print,
cut on fold, for sizes 36-42 in all heights

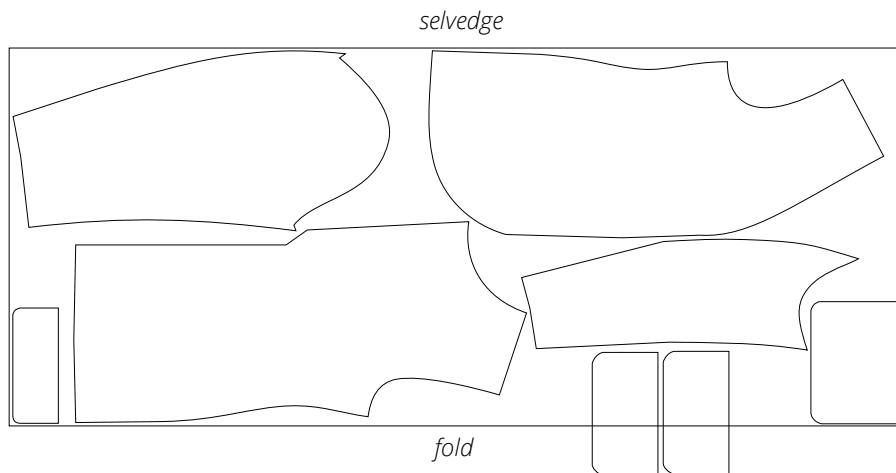


Lining fabric, 140 cm (55") wide, with a directional print,
cut on fold, for sizes 44–48 in all heights



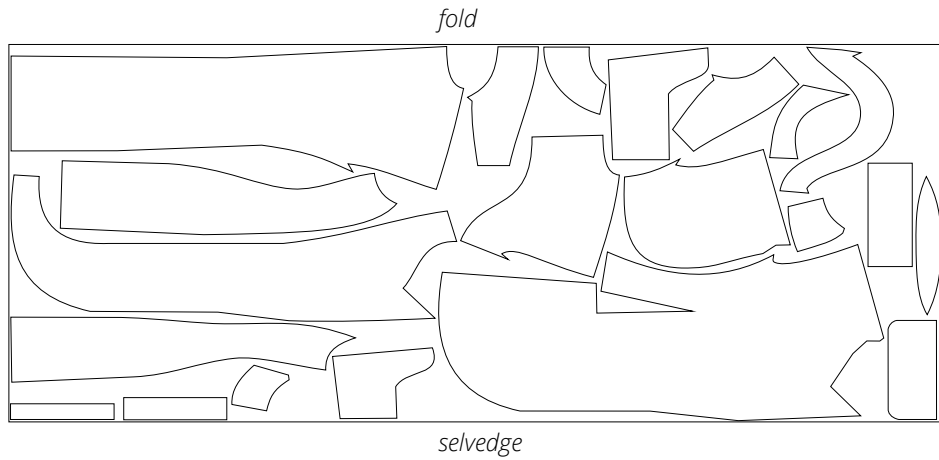
Attention! Cut the bottom flap and pocket top lining pieces on a single layer out of leftover fabric.

Lining fabric, 140 cm (55") wide, with a directional print,
cut on fold, for sizes 50–52 in all heights

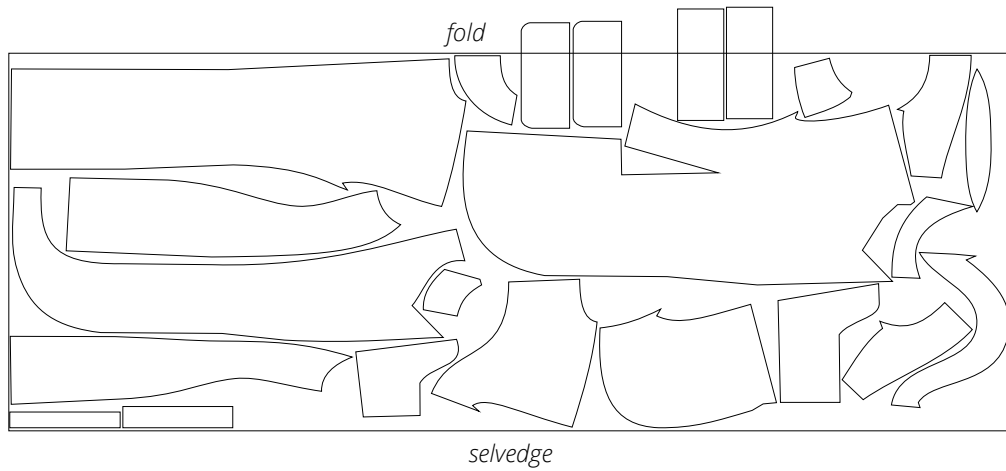


Attention! Cut the pocket top lining pieces on a single layer out of leftover fabric.

Interfacing, 140 cm (55") wide, cut on fold,
for sizes 34–38 in all heights

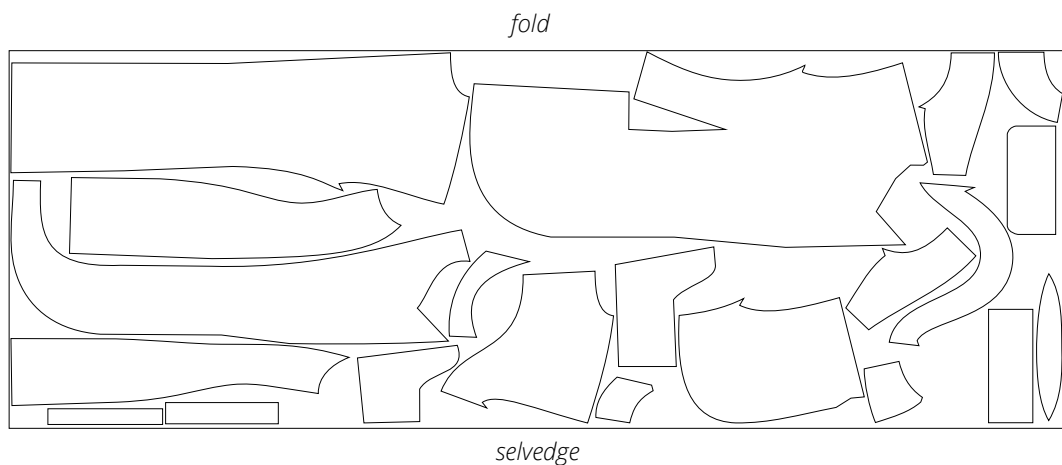


Interfacing, 140 cm (55") wide, cut on fold,
for sizes 40–42 in all heights



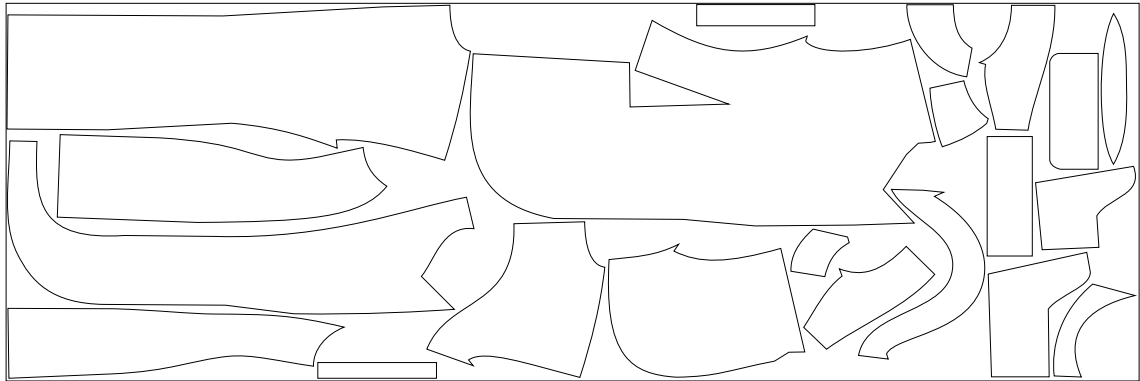
Attention! Cut the top flat and pocket facing pieces on a single layer out of leftover fabric.

Interfacing, 140 cm (55") wide, cut on fold,
for sizes 44–46 in all heights



Interfacing, 140 cm (55") wide, cut on fold,
for sizes 48–50 in all heights

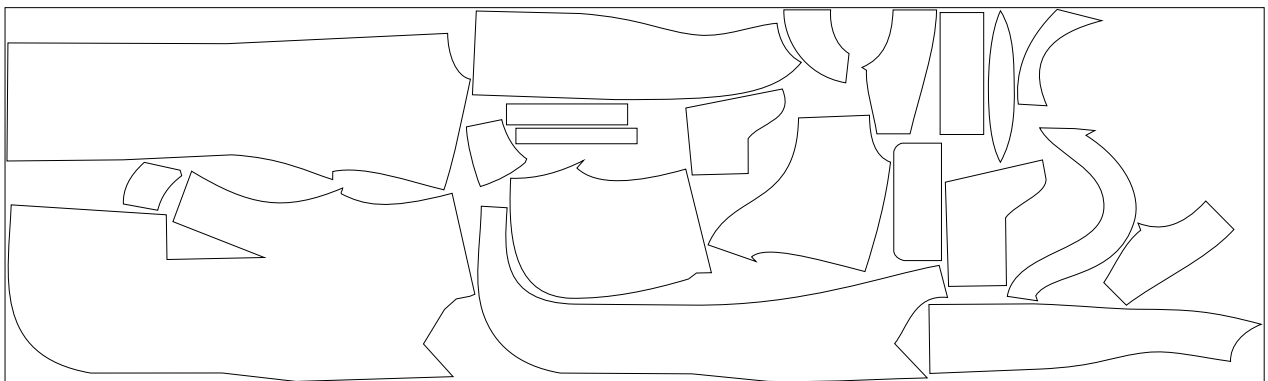
fold



selvedge

Interfacing, 140 cm (55") wide, cut on fold,
for size 52 in all heights

fold



selvage

READY? LET'S GET SEWING!



Match up and pin the dart legs on the wrong side of the front piece.

Stitch on the sewing machine, backstitching at the raw edges only. Leave long thread tails at the dart point.



Cut the dart open in the middle, stopping about 1.5 cm (5/8") short of the dart point. Press the dart seam allowances open.

Press and steam the dart, shrink out the fullness at the dart point on a tailor's ham. Press the seam allowance at the dart point towards the center front edge.



Tie the thread tails into a knot and hide them inside the dart bulk using a needle.