

FROM THE FOUNDER OF THE #VIKISEWS BRAND

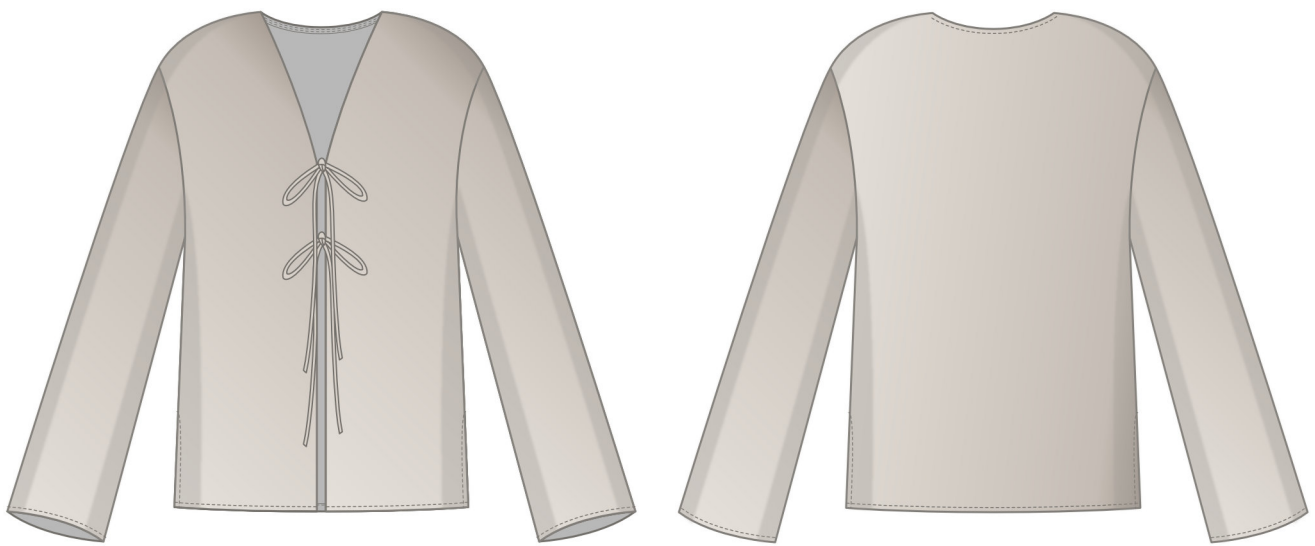


Back in 2016, when I was working on my first set of sewing instructions, I was trying to write them in such a way that even a complete beginner could easily understand and use them to create their very first garment. These instructions laid the foundation for the Vikisews brand, its vision and its mission. I wanted to create modern patterns with the utmost detailed and clear instructions.

Now, with each new collection we are constantly improving our instructions, amending them and adding more relevant details. By the time the final product reaches you, our drafters, correctors, and editors would have spent weeks perfecting every word and every photograph. If you compile a few of our instructions together, you will get a sewing manual that will assist you in sewing all kinds of garments at any difficulty level.

And I would be very happy if these instructions helped you to turn your hobby into a lifelong passion... Enjoy the process! Create your ultimate dream wardrobe! Wear your garments proudly for years to come!

If you have any questions, please contact us at info@vikisews.com — we are always there to help.



KEHLANI PATTERN DESCRIPTION

Kehlani is a loose-fitting blouse with a straight cut. The neckline is deep and V-shaped. The side seams end with slits. The blouse has long set-in sleeves and fastens with ties at the center front. Kehlani is hip-length.



IMPORTANT!

The contents of this pattern are copyright protected and belong exclusively to Vikisews. You may use Vikisews patterns for personal use. It is prohibited to share Vikisews patterns and instructions with third parties, as well as to publish patterns and instructions online for public access. **Non-compliance with the mentioned rules is a violation of the US copyright law and may result in civil liability and criminal prosecution.**

You may use Vikisews patterns for commercial use, to sew custom-made garments and/or create fashion collections, on the condition that the patterns are solely used in a manufacturing setting and are not further shared with individuals.

TOTAL EASE ALLOWANCE

	Bust ease	Waistline ease	Hipline ease	Hipline ease
cm	24.6	45.9–45.5	21.8–21.1	4.7–6.5
inches	9 5/8	18 1/8–17 7/8	8 5/8–8 1/4	1 7/8–2 1/2

GARMENT LENGTH, SLEEVE LENGTH

Height, cm	Back length, cm	Sleeve length including shoulder width, cm
1 (154–160)	64.6–68.2	67.9–72.5
2 (162–168)	68.6–72.2	70.8–75.4
3 (170–176)	72.6–76.2	73.7–78.2
4 (178–184)	76.6–80.2	76.5–81.1

Height, ft	Back length, in	Sleeve length including shoulder width, in
1 (5'1"–5'3")	25 3/8–26 7/8	26 3/4–28 1/2
2 (5'4"–5'6")	27–28 3/8	27 7/8–29 5/8
3 (5'7"–5'9")	28 5/8–30	29–30 3/4
4 (5'10"–6'1")	30 1/8–31 5/8	30 1/8–31 7/8

SUGGESTED FABRIC

To sew this blouse, choose dress-weight fabrics with the following properties:

- medium weight, soft, non-stretch or low-stretch
- the fiber content can include natural fibers (silk), artificial fibers (viscose), blends (silk + polyester, silk + viscose, etc.), and synthetics (polyester, polyester + elastane)

The following fabrics are recommended: crepe, dress-weight viscose, crepe de chine, artificial silk, natural silk.

Attention! We do not recommend stretchy knit fabrics.

The blouse in the photo is made of artificial silk. The fabric is medium weight, soft, and non-stretch. The fiber content is 100% polyester. The fabric weight is 180 g/m².

FABRIC AND NOTIONS REQUIREMENTS

1. Main fabric, 140 cm wide, 115–210 g/m², with a directional print/nap, in meters:

Height, cm	Size						
	34–38	40	42	44	46	48–50	52
1 (154–160)	1.35	1.4	1.45	1.5	1.5	1.5	1.6
2 (162–168)	1.4	1.5	1.5	1.55	1.55	1.65	1.75
3 (170–176)	1.5	1.6	1.6	1.65	1.65	1.65	1.8
4 (178–184)	1.55	1.65	1.65	1.7	1.75	1.75	1.95

Main fabric, 55" wide, 115–210 g/m², with a directional print/nap, in yards:

Height, ft	Size					
	34–38	40	42	44–46	48–50	52
1 (5'1"–5'3")	1 1/2	1 1/2	1 5/8	1 5/8	1 5/8	1 3/4
2 (5'4"–5'6")	1 1/2	1 5/8	1 5/8	1 3/4	1 3/4	1 7/8
3 (5'7"–5'9")	1 5/8	1 3/4	1 3/4	1 3/4	1 3/4	2
4 (5'10"–6'1")	1 3/4	1 3/4	1 3/4	1 7/8	1 7/8	2 1/8

2. Lightweight interfacing, knit or woven, 140 cm wide, 30 g/m², in meters:

Height, cm	Size					
	34	36	38–40	42–44	46–50	52
1 (154–160)	0.75	0.75	0.75	0.75	0.8	0.8
2 (162–168)	0.75	0.8	0.8	0.8	0.8	0.85
3 (170–176)	0.8	0.8	0.85	0.85	0.85	0.85
4 (178–184)	0.85	0.85	0.85	0.9	0.9	0.9

Lightweight interfacing, knit or woven, 55" wide, 30 g/m², in yards:

Height, ft	Size	
	34–40	42–52
1 (5'1"–5'3")	7/8	7/8
2 (5'4"–5'6")	7/8	7/8
3 (5'7"–5'9")	7/8	7/8
4 (5'10"–6'1")	7/8	1

IMPORTANT! When purchasing fabric, please account for shrinkage and buy 5% more than required.

3. Stitched bias-cut fusible stay tape with stitch reinforcement, 1.5 cm (5/8") wide — 55–73 cm (21 5/8–26 3/4")
4. Matching thread — 5 spools (1 spool for the sewing machine + 4 spools for the overlocker)

TOOLS AND EQUIPMENT

- sewing machine for construction
- overlocker for finishing raw edges. This may be replaced with a stretch overlock stitch or a zigzag stitch on the sewing machine (overlock or zigzag stitch width 2–3 mm, stitch length 2.5 mm)
- stitch-in-the-ditch foot for the sewing machine (optional)
- loop turner

PATTERN PIECES LIST

1. From main fabric:

- front — cut 2
- back — cut 1 on fold
- sleeve — cut 2
- front facing — cut 2
- back neck binding — cut 1
- tie — cut 4

2. From interfacing:

- front facing — cut 2

IMPORTANT! Don't forget to transfer all pattern markings and notches onto the fabric.

SEAM ALLOWANCES

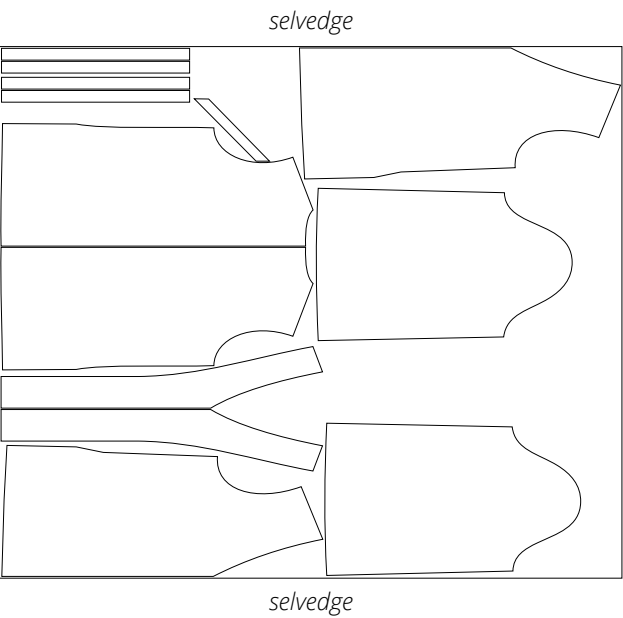
Pattern pieces include the following seam allowances:

- garment hem and slit seam allowances — 2 cm (3/4")
- sleeve hem allowance — 2 cm (3/4")
- all other edges — 1 cm (3/8")

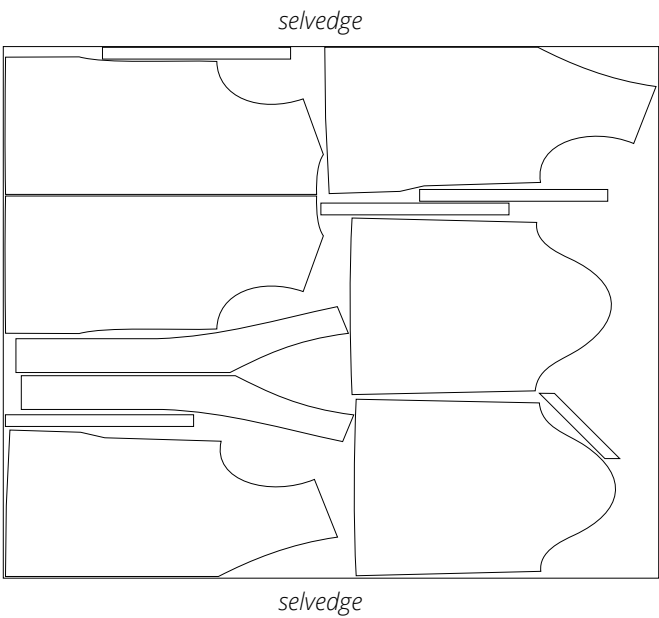
Take this into account when laying out pattern pieces on the fabric.

CUTTING LAYOUT

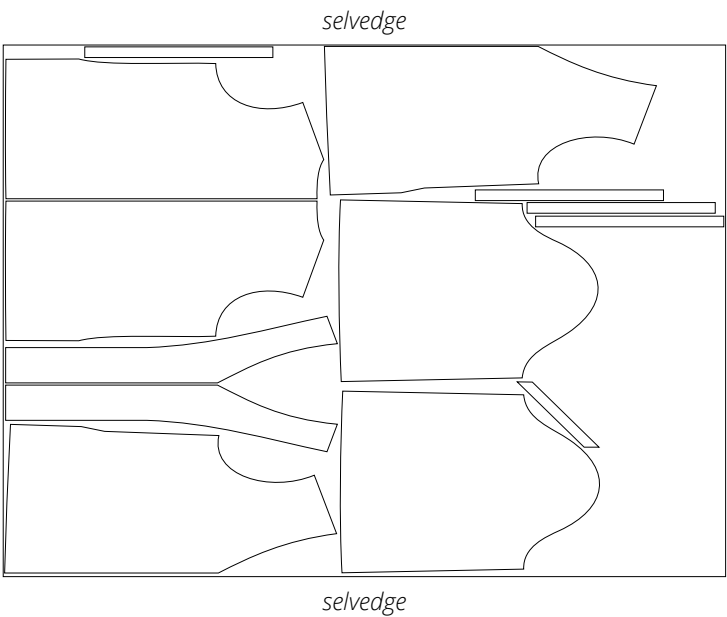
Main fabric, 140 cm (55") wide, with a directional print/nap, cut on a single layer, for sizes 34-42 in all heights



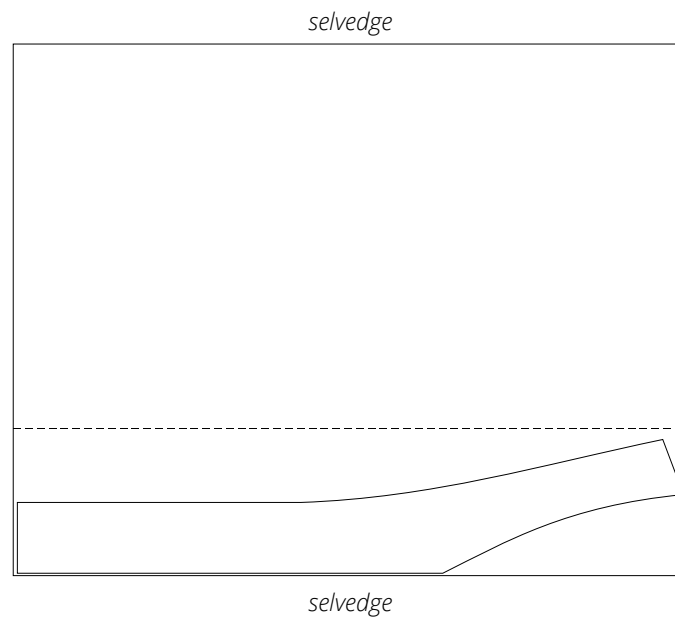
Main fabric, 140 cm (55") wide, with a directional print/nap, cut on a single layer, for sizes 44-50 in all heights



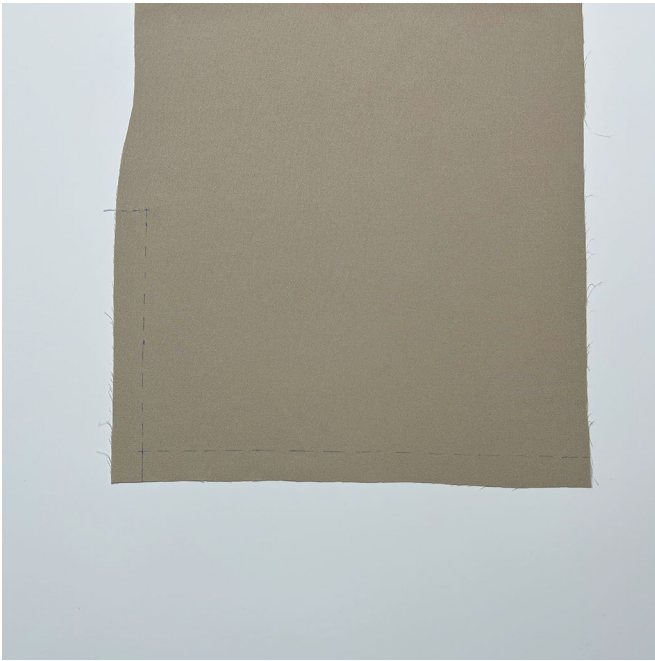
Main fabric, 140 cm (55") wide, with a directional print/nap, cut on a single layer, for size 52 in all heights



Interfacing, 140 cm (55") wide, cut on partial fold
and in one direction, for all sizes in all heights



READY? LET'S GET SEWING!



Using tailor's chalk, mark guiding lines on the wrong side of the front piece, at 2 cm (3/4") from the slit and bottom edges.



Press the slit seam allowance and hem allowance on the front piece to the wrong side, aligning the edges with the guiding lines.



Clip into the slit notch to make it 9 mm (just under 3/8") deep.